

IT'S TIME TO PLANT BEANS AND PEAS

We Have in Stock:
Wood's Yellow - Tokio
Brown Biloxi and Lareda

MIXED PEAS

Both Home Grown and Western.

Grey Crowders and Virginia grown Black Eyes.

If Your Mule Could Talk,

He would probably say: Master, please don't make me work all Summer wearing an overcoat.

CLIP ME FOR COMFORT'S SAKE. I am your faithful servant, so make me as comfortable as possible.

Sprayers - Dusters - Arsenate of Lead - Rotenone - Sprayer Repairs.

--- GLASS ---

We carry a large assortment of sizes of glass in single and double strength from 8x10 to 36x48. We also fill special orders in a few days.

--- PAINT ---

Our stock of Paint and Enamel is very complete.

\$1.35 a Gallon up

A lovely Inside Flat in White and colors at \$2.00.

-- Buckets Won't Stop Leaks --
BUT

Foster's IBM Roof Coating
Will stop any leak that can be stopped with Roof Coating.

50c a Gallon

In 5 Gallon Steel Buckets

NEW OHIO OIL BATH MOWERS

Hyatt Heavy Duty Roller Bearings

Quiet as a Sewing Machine
Rugged Construction
Light Draft

TWO SPEEDS!

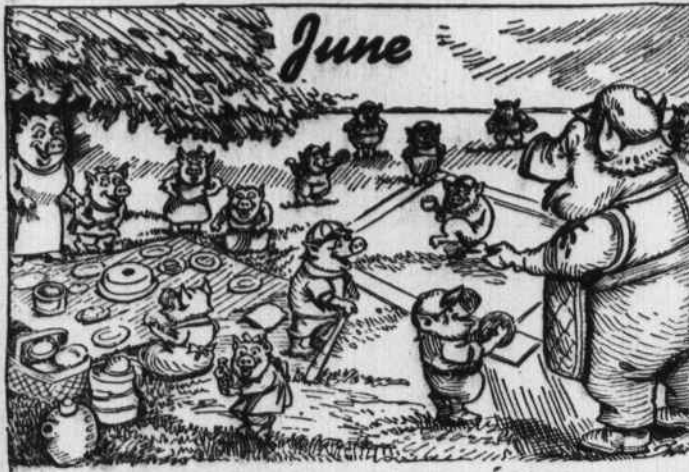
REGULAR for Normal Cutting
HIGH for Heavy Cutting.
Change gears like an automobile.

SEABOARD STORE CO., INC.

WHOLESALE - RETAIL
Pay Cash and Pay Less
D. F. McKinne, President

THE RARE MONTH

On The Farm and in The Home



June is a month they say is rare. It brings much work that must be done;

Also, it brings relief from care For picnic season has begun. Between the hoeing and the hay, Come opportunities for play.

The Big League pitchers largely come From farm boys reared in country air.

While any farm girl skilled at home Deserves a decent millionaire. But whether baseball stars or wives, Fresh air means stronger, longer lives.

State College specialists recommend the following good farm practices for the month of June:

Earl Hostetter, professor of animal husbandry, says the farmer who grows beef cattle, sheep, and swine gets a breathing spell during June. The sheep and beef cattle should be on pasture, and, except for salt and water, will need little attention. If sheep are on permanent pasture, it will be necessary to drench the animals periodically to control stomach worms.

While the livestock man can take it easy, Roy Dearstyne, a head of the college poultry department, says hot weather only adds to the problems of the poultryman. Not only is this true with young birds, but the mature flocks as well. He points out that most of the early-hatched pullets are ready for vaccination against chicken pox if this has not already been done. Then, the poultryman should watch for overcrowding at this period. Other factors in producing healthy strong pullets are: feeding a well-balanced diet, constructing summer range shelters, checking for internal parasites, and providing plenty of watering places and shade.

Enos Blair, Extension Service agronomist, passes along a few hints on harvesting small grain this month. He says the grain should be harvested when dry and shocks so built as to withstand

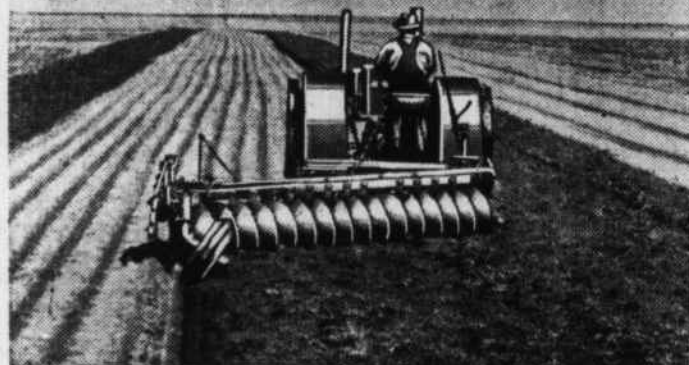
wind and "shed" rain. Much grain is lost each year because it was cut when too wet or shocked improperly.

The second important job, the State College man says, is the cultivation of growing crops. Cultivate corn, cotton, and tobacco steadily during this month, at least every week or ten days. A good rule is to cultivate as soon as possible after each rain. The third important job is getting soybeans and cowpeas planted on stubble land. To do this, Blair suggests getting into the field immediately after the grain is cut. Plow the land well, make a good seed bed, and put the legume seed in the ground. Also, corn and cotton should receive a top-dressing of nitrate of soda this month.

Paul Kime, Experiment Station agronomist, says if sufficient hay crops have not been seeded, there is still time to make good crops of soybean, cowpea, and Sudan grass hay if the crops are planted during the first part of June. Sudan grass may be seeded alone or with the two legumes. The grass makes an excellent hay if cut just as it heads.

Dr. Luther Shaw, State College Extension Service plant pathologist, warns against harvesting and sacking Irish potatoes when the soil is wet, since the spuds will heat in the containers and often rot badly. Also avoid harvesting during mid-day if the weather is unusually warm as scald and decay may result.

Fast, Low-Cost TILLAGE



TAKE THE
TIME- and MONEY-SAVING WAY
WITH A JOHN DEERE
DISK TILLER

Prepare your seed beds at minimum cost with a husky, big-capacity John Deere Disk Tiller, do your summer-fallowing in a big way, save valuable hours on wheatland tillage, do a better job, and get it done at the right time.

Heavily braced overhead frame prevents clogging. Frame weight above the disks aids penetration. Heavy-duty heat-treated disks. Enclosed heavy-duty power lift. Chilled bearings. Semi-floating hitch for easy control. Quick depth and angling adjustments.

Come in and learn all about the strong, cost-reducing John Deere Tillers.

We also have a full line of Farm Implements at Reasonable Prices.

Call in and let us show you.

FREEMAN & HARRIS

Numa F. Freeman H. Grady Harris
LOUISBURG, N. C.

JOHN DEERE QUALITY IMPLEMENTS AND SERVICE

Timely Farm Questions

Answered at State College

QUESTION: How can I make up a lye solution for disinfecting poultry houses?

ANSWER: A most satisfactory solution is made by dissolving one pound of lye in five gallons of water. The lye, however, should be thoroughly dissolved and the solution well mixed before it is applied. Since lye is caustic and poisonous, it must be used with care. Two pounds of water-staked lime added to the above solution will make a good white-wash and, at the same time, will make the solution more stable.

QUESTION: What is the best ration for a fresh cow?

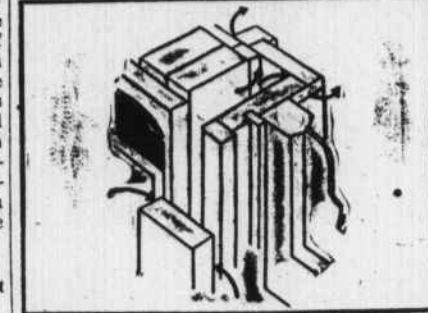
ANSWER: The feed for the first few days after freshening should be very limited with the first day's grain should be very limited with the first day's grain feed being restricted to bran mash. A mixture of what bran and ground oats, equal parts, should then be fed for the next four days. On or about the fifth day after freshening the cow may be started on the regular milking ration and gradually brought to full feed over a period of three weeks. A reasonable amount of legume hay and a small amount of silage may be fed at all times during the freshening period.

QUESTION: What proportions of arsenate, water, and molasses are used for mopping cotton to control boll weevil?

ANSWER: One pound of calcium arsenate should be added to one gallon of water and thoroughly stirred. Then add one gallon of cheap molasses and stir until all ingredients are thoroughly mixed. This will make enough of the mixture for one application on one acre. Larger amounts may be made by using the same proportions. Only enough of the mixture should be made for each day's use. Frequent stirring while applying is necessary to keep the calcium arsenate in suspension.

Women don't like women.

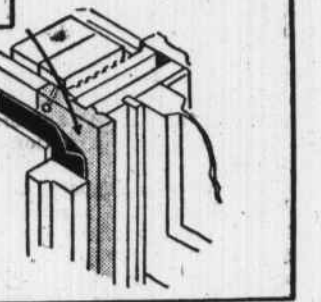
FEW CENTS EXTRA FOR TIGHT WINDOW FRAMES IS GOOD INVESTMENT



LEAKY JOINT
This is the kind of in-different window frame construction that results in drafts and leaks. Arrows point to where cold air leaks in.

TIGHT JOINT

Contractors call this wide blind stop construction. It cuts air leakage more than half around window frames. Costs just a few cents extra per window. Arrow points to wide blind stop.



Don't overlook the importance of the lowly window frame when you build your new house. It is the one thing that permanently joins your windows with the framework of your house. A window frame properly constructed keeps out dirt and drafts by making a weather-tight joint with the wall. A window frame indifferently constructed will allow as much as 174 cubic feet of air per hour to leak into your home, air that is often loaded with dust, to dirty up walls and cause drafts.

Good Construction Costs Little
Wide blind stop construction in window frames has been in use for many years, yet jerry builders will

use frames without it in order to cut costs without regard to consequences. This type of construction costs about 30c to 50c more per window opening than ordinary construction and it will quickly pay for itself in heat saved and added comfort.

Window Frames Permanent
Remember window frames are a permanent part of the wall in your new home. To tear them out and replace them is not only a mess but a big expense as well. The easiest way to avoid leaky window frames in your new home is to buy frames that make a weathertight wall joint and that means wide blind stop construction.

Gravy, coffee and salads are beyond the knowledge and skill of four out of five cooks.

The suspicions of women, so far as men are concerned, are not without foundation.

HERE'S THE REFRIGERATOR BUY OF YOUR LIFE!

The Biggest, Most Completely Equipped GENERAL ELECTRIC Ever Offered at this Low Price.

You'll Always Be Glad You Bought a G-E!

The Big New G-E Thrifty-Six
Yours Today for only
\$4.50
per month.

- 6.2 cu. ft. of Storage Space
- 11.7 sq. ft. of Shelf Area
- Stainless Steel Super Freezer
- 8 lbs. of ice—4 trays—80 cubes
- All-Steel Cabinet—All porcelain inside
- Famous G-E Sealed-in-Steel Thrift Unit

Thrifty in Price—in Current—in Upkeep! The same sturdy, electrically welded all-steel cabinet construction—the same quiet sealed-in-steel cold-making mechanism that have made G-E Refrigerators world-famous for long life and enduring economy.

SEE G-E!
And you'll see the difference!

GENERAL ELECTRIC

We also have several Used Refrigerators as low as \$50.00, in good condition.

ASK ABOUT OUR FALL TERMS

RAYNOR'S

RADIO AND JEWELRY SHOP

"We Sell the Best and Service the Rest"