

Soft or Strict Lines Sum Up Fall

Young, snappy and very contemporary, sportswear captures the fanciful heart for fall. New proportions extend the line of fashion from neck to toe, giving feminine creativity free rein to perfect a most complete sportswear look.

The predominating looks follow the strict shaping and welt seaming of Courreges, the softer but still young London look and the truly soft, feminine look. Really rocking the waves is the latest conception of the total look: matching stockings.

To show off all the patterned and textured legs, skirts are shorter still, some rising all the way to kilt level, usually bouncing out in pleats or softened with front panels, slim shirring, A-line shaping.

For a difference, hemlines are cuffed, waistbands are trimmed in leathers. There's a Western look to hipster skirts of leather with lace-tie backs, lots of welt seaming.

There's Art in Surface Interest Textures

Suspender skirts, topless jumpers help broadcast all the news in fall sweaters. Most especially, the sweater is skinny, less bulky, all female and closer to the body. Variations on this theme extend the sweater to tunic length and belt it.

Heather, cables, argyles are back; so are stripes. There's textured art in the surface interest of embroidery, fringe and crochet.

Knit tops and pullovers take the same direction as sweaters but have unusual turnoffs, such as doublets.

Blouses are softened with smock shapes, bows, ascots, in softest fabrics. Shirts take on new partners in cashmere cardigans, lined to match.

Liveliness counts in dresses for fall '65 and the casual little knit dress has all of that: soft and swingy, strictly seamed, up and down waistline, the total look of matching stockings, scarf, hat.

Jeans, Dress Up
 Pants and pantsuits are for now, for everyone. Take them straight and narrow, tailored to the hipbone, with crisp little battle and pea jackets, prefer them wide with longer jackets, add a bibbed front or smock jacket, cut them off above the knee for the flared leg of a pantalone.

The rugged blue jean is dressed up in wool, leather and its look alike. Really dressed, it becomes a jumpsuit with rhinestone buttons, dots and denim ruffles.

Fabrics Mix Fashionably
 Jackets and little coats are cutaway, tailored, semi-fitted and tied to integrate a chosen look. And vests are coming back as little coordinators in the fabric mix.

The fabric choices are the important details of sportswear for fall. There's the mixing of heather, plaid, herringbone, tweed, leather, paisley, the young liveliness of melton, tattersall, flannel, argyle, textured and lean knits; the white, the pale colors.

New furs such as zebra, raccoon, mink and gray rabbit are exotic worked into hipster skirts, jumpers, jeans and cardigan jackets.

More of the exotica is found in felt hats brimming with holes, fabric matching spats.



Hats, Accessories Bring Total Beauty to Two Views of Fall

Whether the look is soft or strict, fall hats and accessories are prepared to make it complete.

Fall fashion does move in two ways — toward the softer, curvier silhouette and toward the "strict" architectural shaping that stems from the Courreges influence. But the unifying theme for both silhouettes is the total look, and that's where hats and accessories come in.

For the costume complete, new millinery, handbags, shoes, stockings, gloves, scarves and fashion jewelry are at hand to carry out the soft or strict look.

Hats Are Soft, Strict
 Hats take the soft way in draped turbans, box or shoulder-berets. Brims, wide or narrow, cast a pretty, soft shadow. The scarf hat — in the form of a scarf that can be tied any way the wearer prefers, or as a hat that gives the soft effect of a casually-tied scarf — continues strongly into fall.

For the strict silhouette, hats are tailored — jaunty fedoras, for instance. Hats that perch on the back of the head, with squared-off brims, to frame the face, are another way to complete this look. Or, for the strict silhouette might be interest — pigskin, ostrich, lizard, crocodile, either the real thing or fabulous fakes — helps total up a strict look.

Hosiery Trend Grows
 Hosiery, in all sorts of patterns and textures for all sorts of fashions and occasions, moves into fall as big news. The open and airy effect of getting bigger. It's a "total look" in itself, as patterned

stockings or tights matched to sorts, including the elegantly bared strapping style.

Boots Set Off Fashion
 Boots, very much a part of the strict look, set off everything from short skirts to long pants. Polished smooth leather, dressy suede, nappy brushed leather, rugged grain-fying theme for both silhouettes is the total look, and that's where hats and accessories come in.

The below-calf boot is a basic, and the complete range of boot heights extends from ankle to knee.

Handbags play it soft in draped, pleated, gathered and shirred pouches, envelopes and satchels. The tailored bag is a natural for the strict look, and may take shape as a tote, envelope, box or shoulder-strap. Luggage-like detailing is a factor here.

Size for either look in handbags may be small and neat or extra-large, but even the smallest styles are engineered for increased capacity.

Contrast piping, printed linings, beading and embroidery strike the pretty note in gloves. Longer styles are appropriate for feminine-mood fashions; the shortie comes into its own as a complement for tailored clothes. Texture interest — pigskin, ostrich, lizard, crocodile, either the real thing or fabulous fakes — helps total up a strict look.

Young Favorite, Plaid, Appears
 here in a dress with slim skirt, body-skimming jacket. Fast-color, easy-care fabric is by Dan River. Photo from Textile Dye Institute.



Young favorite, plaid, appears here in a dress with slim skirt, body-skimming jacket. Fast-color, easy-care fabric is by Dan River. Photo from Textile Dye Institute.

A file of quick-to-fix recipe ideas is the clever homemaker's best helper. Here's a dessert idea based on readily available, pantry shelf ingredients to add to your collection. To make toast shells for fruit tarts, trim crusts from slices of enriched sandwich bread. Butter both sides of bread and dip in cinnamon-sugar. Mold by pressing into lightly greased muffin cups and bake in pre-heated 400 degree oven 12 to 15 minutes, or until golden brown. Flavor caged fruit pie filling (try apple or peach) with lemon juice and spoon into baked shells. Top with puffs of whipped cream.

Most men are actuated by two motives only: the drive to get money and the fight to keep it.

NEED DRAPERIES?
 VISIT TAYLOR'S
 DRAPERY SHOP
 FEATURING

NORMAN'S
 CUSTOM TAILORED
 DRAPERIES
 AND FOR YOUR
 CARPET NEEDS
 IT'S TAYLOR'S
 FLOOR COVERING
 SHOP FEATURING

CARPET CRAFTSMANSHIP
Mohawk
 CARPETS FOR HOMES
 AND CHURCHES
 FREE ESTIMATES

H.C. TAYLOR
 HARDWARE
 FURNITURE

Teens Want Shoes with Originality

Teen-age tastemakers are keeping an eye out for bright, fresh footwear this fall.

The fashion-minded teenager likes discovering her own shoe loves, not slavishly imitating her elders, comments Leather Industries of America.

The "leggy look" was quickly picked up by the teen miss and adopted as her particular pet. A creature of comfort, she has now latched onto the incoming rounded toe.

The informal look afoot is either a low-cut, low-heeled sling or pump, or the boot. For bare beauty in young footwear, pumps are shelled out cut away, foreshortened at the vamp. The open-backed sling is bigger than ever for campus and casual wear.

Boots Around
 Leathers lighting up these shoes include high voltage smooth leathers, nappy suedes, brushed leathers and grains.

Teen gadabouts embrace the boot — perfect footwear to balance rising hemlines. At heights from mid-calf to ankle, boots and booties have such styling details as side scoring, fringe, ghillie ties and tassels.

Also abundant in the fall boot crop is the long, lean variety. To spotlight the leathers — smooth, grained, brushed, waxy, embossed — styling is kept simple. Both boots and booties are lined in lightweight porous leather, or in snug shearing.

Moccasins in the New
 In class and out, colorful tie-shoes are a quick-click in brushed, smooth, grained and embossed leathers. These trim teen ties may be one or two-eyelet, ghillie or kiltie type.

Shanks are sometimes opened for an airier effect. The strap-flatties come with a tie atop a T, or collared with pinking or scallops.

The moccasin hits fashion headlines with a dozen delightful variations this fall. Purists will still find the classic hand-sewn moc in glove or

finish, a brushed leather moccasin, instep-strap and square-toed; or a moccasin with a heavily pebbled texture leather. Most moccasins generally present a broader, rounder view.

When dressing up teen feet, new ultra-feminine shoes make dating a double delight. Sling-backs and low-cut pumps in smooth, lustre, suede and patent leathers are set on slim low and mid-heels.

Pumps are cut down or away, many showing off rhinestone or cut-steel buckles. Strapping sandals are an airy network of lacing.

Teen shoe hues cover a wide palette this fall. Color combinations include green and pink, red and beige, blue and brown. Continuing in popularity are the browns and greens. Winter pastels and neutrals also are available.

Most people are ready to spend somebody else's money.



Teens take to the ghillie this fall in styles like this mid-heeled tassel version with the new, rounded look, in reverse calf. By I. Miller.

Date Shoes Go Feminine
 However, teens looking for the news in shoes may choose a rust buckle-strap moc in polished leather with antiqued

BOYS

BACK TO SCHOOL

SPECIALS AT ROWE'S

SPORT COATS	REDUCED AS LOW AS \$1.99 \$18.00 Value
SUITS AS LOW AS 1/2 Reg. Price	ALL SPORT SHIRTS SHORT SLEEVE \$1.99
	ONE GROUP BOYS SHOES & LOAFERS \$4.99

JUMP IN AND SAVE! FINAL

Clearance

AT ROWE'S

LAST CALL OF SUMMER

SALE

BEGINNING THURSDAY MORNING

ALL STRAW HATS 1/2 Reg. Price	SPORT COATS SUMMER & WINTER REDUCED AS LOW AS \$10.00 EACH	LARGE GROUP OF SPORT SHIRTS \$1.00 EA.
ALL DRESS PANTS REDUCED	ONE GROUP SUMMER & WINTER 1/2 Reg. Price	

HEY! CHECK OUR BIG SELECTION OF QUALITY MERCHANDISE ON THE \$1.00 TABLE

SUITS FINAL REDUCTION UP TO 50%	LARGE GROUP SHOES YEAR-ROUND-STYLES 1/2 Reg. Price	BERMUDA SHORTS & SWIM SUITS 1/2 Reg. Price
---	--	---

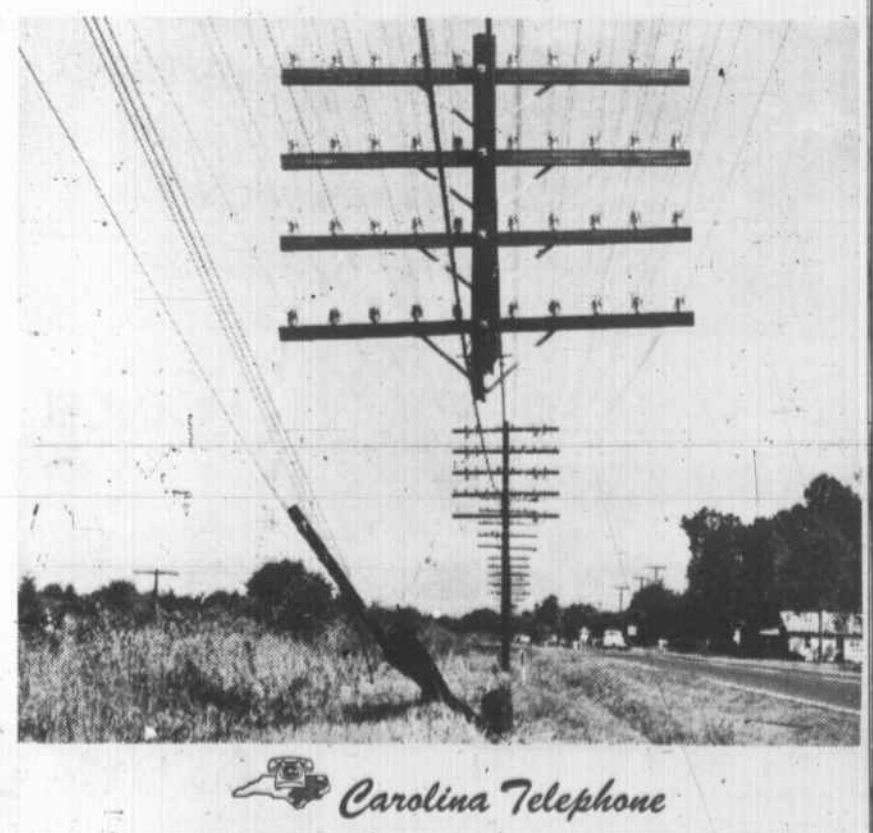
SUMMER GOODS MUST GO!!

ROWE'S

MEN'S SHOP

We admit, it looks a bit silly, but, we didn't build it this way. We try to construct our lines to withstand most anything including runaway autos. We're proud that the wires held up the pole (usually it's the other way around) and communications went on, uninterrupted.

(Dependable facilities are another hidden value in your telephone service.)



Carolina Telephone