

Franklin County Agent Dean Reports Tobacco Crop Off 25 Percent

In his monthly report to the County Commissioners, County Agricultural Agent, C. T. Dean, Jr. discloses that tobacco income in the county may be off as much as 25 percent. Dean, who is presently in Pittsburgh, Pa. to receive a National Service Award for his services to Franklin County farmers, reports a short cotton crop and "one of the best corn crops on record."

Dean's report follows: Farmers are still in the process of marketing their 1965 tobacco crop. Earlier in the marketing season farmers in general were not too pleased with the way their tobacco was selling. During the past two weeks prices have picked up on several grades.

Heavy leaching rains during the growing season created some problems in tobacco production, but most farmers followed the recommended practices necessary to make a good quality crop. This was especially true during harvest season when they allowed the crop to get thoroughly ripe.

As the end of the tobacco marketing season nears it appears that Franklin County's tobacco income will be off nearly 25% as compared to 1964. Weather conditions, acreage reductions, and the new acreage-poundage program contributed to the decrease. The new acreage-poundage program will be an asset to many individuals in that they may carry forward to 1966 any pounds that they were short of on this year's poundage quota.

Most farmers report that their cotton yields are coming up short. Excess rain and one of the worst boll weevil and bollworm infestations ever have cut yields. Some farmers that were able to control insects are making a bale or more per acre. John Lee Wilder, Route 2, Franklinton, has picked 40 bales on his 37 acres. Many are harvesting their crop by machine.

Farmers have begun harvesting the best corn crop ever. Several buyers report that their storage facilities are already filled to capacity.

A recent survey shows that 90% of the county's tobacco farmers have cut their tobacco stalks and plowed out the roots. Many seeded a winter cover crop on the land.

Rotation of tobacco with Nematode resistant crops long has been recognized on one of the best and most practical methods of controlling nematodes. Rotation can increase the value per acre several hundred dollars as compared with continuous tobacco culture. Experiment Station results and farmers' results the past few years have shown Fescue to be one of the best crops to use in a tobacco rotation. With this in mind more and more

acres of Fescue for rotation are being seeded each year. Also, many farmers are using Fescue in rotation with other crops. The majority seed the fescue in with small grain.

Many farmers are taking advantage of the good weather to harvest their cotton. Even though the yield will be low due to insect damage and excess rain farmers realize that top quality brings top price. They also realize that to have top quality you must harvest early and keep it clean and dry. At least three new mechanical cotton harvesters have been added this season.

Franklin County farmers

started harvesting one of the best corn crops on record this month. It is estimated that the county will average close to 65 bushels of corn per acre which will be about five bushels above last year's record yield.

The Community Judging for Community Development in Franklin County was held during the month. Moulton-Ingleside placed first with Justice and Seven Paths giving them close competition. Each community worked with projects

to help increase income, youth activities, home improvements, and in general help make their communities better places to live.

Moulton-Ingleside has completed a large community building that is being used for the young people of the community. They have an outstanding youth program for the young people of the community - boy scouts, 4-H Club and church organizations. Plans have been made to help develop projects to in-

crease income. The three churches are working together to provide spiritual guidance through a united program. They will receive \$50.00 from the Capital Area Development Association on November 17, 1965 at the award dinner to be held at Louisburg College. Justice and Seven Paths Communities will also receive smaller cash awards to be used by their association.

Franklin County had two State 4-H winners. They were Ro-

bert Earl Hock in Entomology and Carroll Mode in Achievement. Robert Earl will receive an all-expense paid trip to National 4-H Club Congress in Chicago.

There were two 4-H booths and 24 individual exhibits at the County Fair. One booth by the Justice 4-H Club won a blue ribbon while the Electric Club won a red ribbon. Nine blue ribbons, twelve red ribbons, and three white were awarded to the individuals.

Doctors Talk

By Rembert Benjamin, M.D.

Infectious mononucleosis, or "glandular fever" has become a fairly commonly encountered disease among children and young adults. The groups most frequently affected of all are those in high school and college.

The actual cause of this disease process is not definitely known; however, all experimental evidence leads us to believe it results from a virus infection.

It apparently is not a highly contagious infection, and does not have epidemic qualities. The mode of transmission is thought to be from direct contact.

The usual picture is very similar to that seen in an acute viral infection. There is a characteristic period of onset accompanied by sore throat, nasal stuffiness, coughing, headache, and the general complaints of influenza. One of the characteristic features with this disease is generalized enlargement of the lymph glands, particularly with those in the back of the neck.

Probably the most important reason for recognizing glandular fever early is that treatment, although very simple, is at the same time extremely singular. Absolute and strict bed rest is mandatory, and is required usually from three to six weeks.

Many times sub-clinical or unrecognized acute phases of this disease occur, followed by a disguised remission for a period of time. In these cases there is later a gradual loss of energy, sluggishness and headaches and other symptoms of general malaise, and possibly a low-grade fever. These unfortunate individuals are more resistant to a prompt recovery once the sub-acute or chronic process had developed.

This disease is usually not serious or fatal. However, it can be extremely debilitating, when it occurs in an extremely active and vital group of individuals.

You will long remember the savory crunch of these Crisp Lemon Cookies with tea. For 8 dozen cookies grease baking sheets and preheat oven to 400 degrees. Cream together 1 cup sugar and 1/2 cup butter or margarine until light and fluffy. Blend in 1 tablespoon grated lemon rind and 1 teaspoon lemon extract. Beat in 2 eggs, one at a time. Add 4 cups sifted enriched self-rising flour alternately with 2 tablespoons milk. Beat well after each addition. Chill dough at least 2 hours or until it can be easily handled. Roll 1/8-inch thick and cut with 2-inch cookie cutter. Place on baking sheets. Bake 8 to 10 minutes. Immediately remove to wire racks and cool.

You can still make many friends by speaking nicely about people.

It can be said of modern business leaders that some die, but few retire.

Martin Well Company

WELL BORING - DEEP WELL DRILLING
WARRENTON, N. C.

"A Well A Day - The Martin Way"

N. C. LICENSE NO. 2
MANLEY S. MARTIN

DAY: 257-3651
NIGHT: 257-3392

CLOSE-OUT SPECIALS

SOME SLIGHTLY DAMAGED

- 2 Pc. EARLY AMERICAN HI-BACK SOFA & CHAIR MOSS GREEN, TOP QUAL. COVER, FOAM CUSHIONS was 232.95 NOW 169.95
- 2Pc. EARLY AMERICAN HI-BACK SOFA & CHAIR, EXPOSED WOOD TRIM, GREEN TWEED COVER was 229.95 NOW 149.95
- 2 Pc. EARLY AMERICAN SOFA & CHAIR, FOAM CUSHIONS, HEAVY GAUGE SPRINGS, TOP QUALITY FRAME, BETTER QUAL. PRINT UPHOLSTERY was 288.95 NOW 199.95
- 2 Pc. EARLY AMERICAN SOFA & CHAIR, GREEN TWEED, HI-BACK was 216.95 NOW 149.95
- 4 Pc. WALNUT ITALIAN PROVINCIAL BEDROOM GROUP was 309.95 NOW 269.95
- PLASTIC TOP WALNUT HARVEST TABLE was 89.95 NOW 49.95
- OVAL WALNUT PLASTIC TOP DINING TABLE was 78.95 NOW 49.95
- GATE LEG DROP LEAF MAPLE DINING TABLE was 69.95 NOW 49.95
- 7Pc. DINETTE SUIT, PLASTIC TOP, CHAIRS COVERED IN EARLY AMERICAN PRINT was 94.95 NOW 69.95
- 2 Pc. LAWSON 90 in. SOFA & CHAIR, FOAM CUSHIONS, GOOD QUAL. COVER, CELADON GREEN was 234.95 NOW 169.95

ODD LOT OF CHAIRS - 1/3 TO 1/2 OFF

TOYLAND IS OPEN

WITH THE LARGEST STOCK OF TOYS AND GIFTS IN THIS AREA SAVE UP TO 44% AND MORE

GIANT DISCOUNT VALUES

HEATERS HEATERS

OIL HEATERS GAS HEATERS COAL HEATERS

WOOD HEATERS ELECTRIC HEATERS

H.C. TAYLOR
HARDWARE FURNITURE

East Nash Street Phone GY 6-3423 Louisburg, N. C.

Car View

FRI - SAT

ELVIS PRESLEY

JERRY WALD'S **WILD IN THE COUNTRY**

At 8:35 Only

THE MAN WITH A GUN IS **TAGGART**

TONY DAN YOUNG / DAN DURVEA COLOR

At 7:10 & 10:45

Sunday Only

JACK LEMMON VIRNA LISI

HOW TO MURDER YOUR WIFE

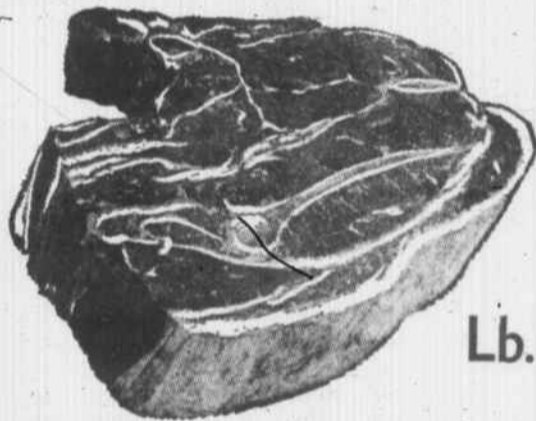
TECHNICOLOR

"SWIFTS" TRU TENDER - GUARANTEED TENDER

Beef Sale

- T-BONE STEAK - - - Lb. 85¢
- SIRLOIN STEAK - - - Lb. 85¢
- CUBE STEAK - - - Lb. 89¢
- RIB STEAK - - - Lb. 79¢

CHUCK ROAST



Lb.

39¢

FRYERS

GRADE A WHOLE Lb. 26¢

BACON

SWEET RASHER Lb. 59¢

- FRESH SPARE RIBS Lb. 45¢
- SLICED COUNTRY HAM Lb. 99¢
- CUT UP BACK BONE Lb. 46¢
- FRESH DRESSED FISH Lb. 39¢

RED BAG LUZIANNE

COFFEE

GOLD SEAL FLOUR 25 1/2 LB. BAG 1 69

Limit One With 5.00 Food Order Or More **47¢** POUND

WIGWAM SWEET PEAS 2 303 CANS 37¢

HUNT OR DELMONTE PEACHES LARGE 2 1/2 SIZE CAN 29¢

CAKE MIX or FROSTING 3 1/2 Lb. BOXES 29¢

FRESH FLORIDA ORANGES Do 39¢

FRESH JUICY APPLES 4 Lb. Bag 39¢

WHERE YOUR FOOD **MidWay FOOD STORE** DOLLAR BUYS MORE