

Franklin Mem. Hospital Notes

The following were patients in the hospital Thursday morning:

PATIENTS - Dorothy Branch Avent, Louisburg; Spotwood B. Ayscue, Franklin; Ethel G. Ball, Louisburg; Ida Lucille Best, Louisburg; Lola Rowe Brewer, Louisburg; Billie Denton, Louisburg; Peggy S. Dodsey, Franklin; Ronald C. Edwards, Louisburg; Eugene G. Foster, Louisburg; Leo Edward Fuller, Louisburg; Richard R. Holmes, Louisburg; Emmett D. House, Louisburg; Patricia R. Hunt, Kittrell; Willie Mae Johnson, Louisburg; Tyree M. Lancaster, Louisburg; Edna M. Loftin, Louisburg; Steve Craig Loyd, Louisburg; Lucille M. Romero, Louisburg; Wilson T. Southall, Louisburg; Sam Dolphas Strother, Franklin; Carl Richard Watson, Franklin; Rita Darnell Watson, Franklin; Louis H. Williams, Louisburg; Jimmy D. Young, Louisburg; John H. Ball, Louisburg; John H. Ferguson, Louisburg; Andrew L. Green, Louisburg; Archie W. Green, Jr., Louisburg; James E. Gupton, Louisburg; Luther J. Gupton, Louisburg; James B. Hudson, Louisburg; Alice Gertrude Hunt, Louisburg; Hattie C. Jones, Zebulon; Bettie Lewis, Louisburg; Ruth H. Long, Louisburg; Sallie Foster Parrish, Louisburg; Queen Esther Person, Louisburg; Bertha T. Smith, Louisburg; John H. Smith, Louisburg; Eunice R. Chinnis, Franklin.

Recorder's Court Docket

The following cases were disposed of in Recorder's Court on Tuesday, May 23rd: Gregory Perry Collins, w/m/16, careless and reckless driving. Prayer for judgment continued on payment of costs. Leon Zimmerman, c/m/33, exceeding safe speed. Court orders bond forfeited. William Jeffreys Arnold, w/m/30, assault on female. State takes nol pros upon court costs to save County harmless. Ray Hollowell, w/m, speeding. \$15.00 fine and costs. John Ellis Finch, w/m/47, incest: G. S. 14-178. Defendant to be held for Franklin County Grand Jury under \$1,500.00 appearance bond. Luther Walker, c/m/26, speeding. \$10.00 fine and costs. Willie Marrow, c/m/63, assault with deadly weapon. Discharged on payment of costs. Reggie Lacy Gillingham, w/m/20, speeding. \$15.00 fine and costs. Freddie Clifton McGhee, w/m/26, speeding. \$10.00 fine and costs. George Edgar Wells, w/m/31, speeding. \$10.00 fine and costs. Dorothy Rose Strickland, w/f/18, speeding. Prayer for judgment continued on payment of costs. Parry Garland Pace, w/m/29, forgery. Defendant waives hearing; to post \$500.00 appearance bond. Charlie Van Hill, speeding. \$25.00 fine and costs. Mary Lena Terry, c/t/16, no operator's license. \$25.00 fine and costs.

Entertainment

If Grand Prix offers anything for the viewer—it is a grand and colorful tour of Monte Carlo, France, Italy, England, Belgium and the Netherlands.

The famous race begins in Monte Carlo and ends in Monza, Italy. There's little variation in the cheering and screaming spectators, but the shots of the racing cars and countryside are excellent.

There's always the added

romantic angle and it now seems passe for a film to have a legitimate love affair. Jessica Walter leaves her English husband, Brian Bedford, and goes to live with an American racer, James Garner. Eva Marie Saint follows suit by taking up with Yves Montand, a married Italian and other actors and actresses follow the same pursuit in their portrayals.

Death

FRANKLINTON - Funeral services for Don O. Powell, 67, who died Tuesday, were held Thursday at 4 p.m. at Sandling Funeral Home by the Rev. Robert Piper and the Rev. Glenn Short. Burial followed in Fairview Cemetery. He was a native of Bertie County and a retired textile employee. Surviving are one daughter,

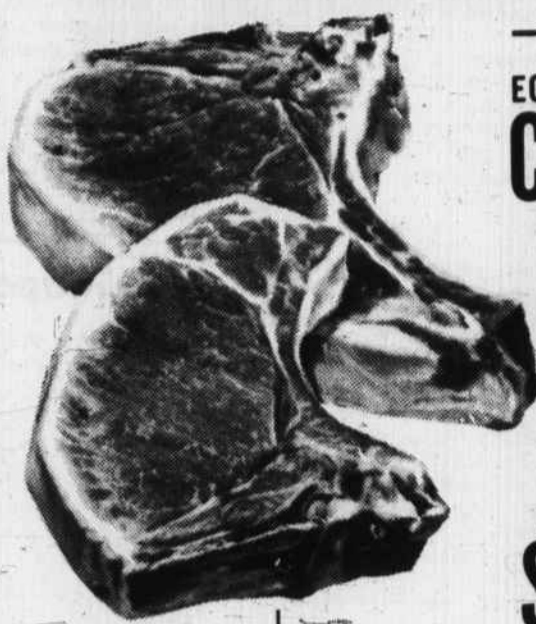
Mrs. Jerry Jackson of Franklin; one son, Bealow Winston Powell with the Air Force in Berlin; two sisters, Mrs. Daisy Horton of Louisburg, Mrs. Lillian Bailey of Franklin; three brothers, Raymond Powell of Franklin, Will Powell of Roanoke Rapids, Roy Powell of Portsmouth, Va.; four grandchildren.

The best counsellor is the man who gives you no advice.

EXTRA

OPEN FRIDAY NIGHT UNTIL 8:30 P. M.

FOODS AT EXTRA LOW PRICES!



— FRESH PORK LOINS —

ECONOMY CUT CHOPS Lb. **59¢**

RIB CHOPS OR ROAST Lb. **73¢**

LOIN CHOPS OR ROAST Lb. **83¢**

CUBE STEAKS Lb. **99¢**

SEALTEST ICE CREAM 1/2 Gal. **79¢**

SEALTEST CHOCOLATE FUDGESICLES BOX OF 12 FOR **49¢**

CHARCOAL 10 Lb. BAG **49¢**

BEST PINK No. 1 TALL CAN SALMON **65¢**

CHICKEN OF THE SEA TUNA 3 CANS **\$1.00**

NUTRITIOUS DELICIOUS PRODUCE

GOLDEN RIPE BANANAS 10¢ Lb.

WESTERN CANTALOUPE 3 FOR 1.00

TOMATOES CARTON 18¢
RADISHES 2 BAGS 15¢

SCOTTIE'S FACIAL TISSUES 2 200-2 PLY BOXES **49¢**

VESPER TEA 1/2 Lb. BOX **49¢**

ARMOUR VIENNA SAUSAGE 2 CANS **47¢**

CAMPFIRE BACON Lb. **59¢** MURPHY HOUSE SAUSAGE Lb. **59¢**

DEAN FARMS GRADE A LARGE EGGS 3 Doz. **1.00**

APRIL SHOWERS PEAS 2 303 CANS **45¢**

RED TAG COOKIE SALE

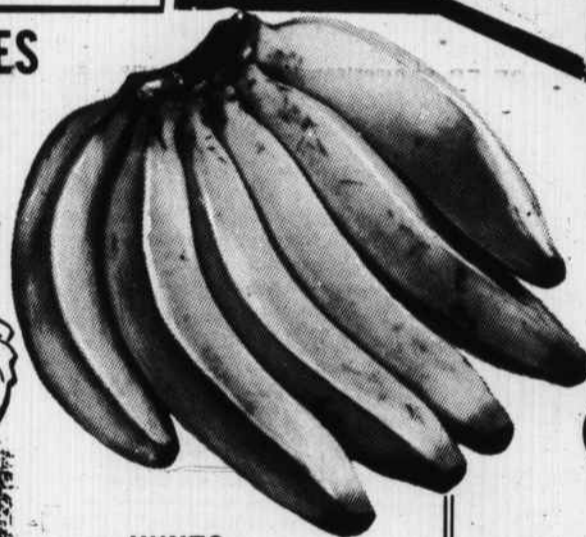
- CHOCOLATE FUDGE SANDWICH
- ICED RAISIN BAR COOKIES
- OLD-FASHIONED OATMEAL COOKIES
- 1 LB. OPERA CREME COOKIES
- 1 LB. FIG BAR COOKIES

STRIETMAN COOKIES 3 Pkgs. FOR **1.00**



PEPSI COLA ALL SIZES 6 Bot. CARTON **39¢**

KRAFT APPLE JELLY 4 18 Oz. JARS **\$1.00**



HUNTS PEAR HALVES 2 1/2 SIZE CANS **39¢**

NBC 1 Lb. Pkg. FIG NEWTONS WAFFLE CREMES 10 1/4 Oz. 3 FOR **\$1.00**

EASY ON THE BUDGET FROZEN FOODS MINUTEMAID LEMONADE 4 6 Oz. CANS **43¢**

SARA LEE POUND CAKE EACH **69¢**

FROZEN FRENCH FRIES 3 2 Lb. BAGS **79¢**

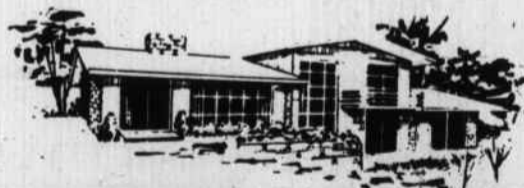
DELMONTE CRUSHED, SLICED, CHUNK MIX OR MATCH PINEAPPLE 3 1 1/2 SIZE CANS **79¢**
CRISCO 3 Lb. CAN **79¢**

NO WEDNESDAY AFTERNOON HOME DELIVERY



SAVE \$1.00 ON A GALLON

Choose either of these two fine exterior finishes



VITA-VAR HOUSE PAINT

Especially formulated to resist today's problem conditions. Resists mildew — salt air — dirt — gases. White is self-cleaning. Colors stay bright. Vita-Var House Paint (oil base) will give you years of beauty and protection.



WAS 6.95 ONLY **5.95**

VITA-VAR aqua-relle EXTERIOR LATEX HOUSE PAINT

This new polyvinyl acrylic paint actually breathes, so that the film resists blistering and flaking due to moisture pressure in the wood. It's the house paint that loves water. Wears up to 50% longer than ordinary house paints. Goes on easily over any previously painted surface... may be used even in damp weather. Made in beautiful decorator colors.



WAS 6.95 ONLY **5.95**

THIS OFFER IS FOR A LIMITED TIME ONLY. NOW IS THE TIME FOR YOU TO GET YOUR HOUSE IN FIRST-CLASS CONDITION.

H. C. TAYLOR HARDWARE & FURNITURE