

**We care**



# NOW A&P IS REALLY IN THE SOUP (SOUP BUSINESS, THAT IS)

For years, our Ann Page Division has made great soups... but there were only 3: Tomato, Tomato Rice and Cream of Mushroom.

For some time, we've been working on new varieties. But you know fussy A&P. If they are going to be called Ann Page, there can't be better soups... and you can't rush perfection. It's taken time but it was worth it. When you taste our 4 new varieties, you'll agree.



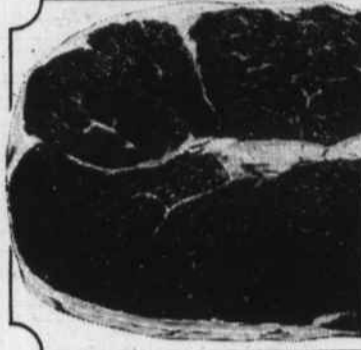
And when you see the prices... you'll want to buy them all. You should, because they just might be the best values in the store. One more thing, all 7 have shiny new green, red and gold labels. Now that A&P is really in the soup business, shouldn't A&P be your store?

COPYRIGHT © 1968, THE GREAT ATLANTIC & PACIFIC TEA CO., INC.

**"Super-Right" Quality Meats!**

**"SUPER-RIGHT" HEAVY CORN-FED BEEF**

# STEAKS



**BONELESS TOP ROUND LB. 89¢**  
**BONELESS BOTTOM ROUND LB. 85¢**

**"SUPER-RIGHT" BONELESS RIB STEAKS**

Per Lb. **99¢**

**"SUPER-RIGHT" OVEN-READY RIB ROASTS**

Per Lb. **89¢**

**NO LIMIT ON PURCHASES AT A&P!**

**"SUPER-RIGHT" QUALITY HEAVY CORN-FED BEEF CUBED ROUND STEAKS** Lb. **95¢**

**"SUPER-RIGHT" QUALITY HEAVY CORN-FED BEEF CHOPPED SIRLOIN STEAKS** Lb. **89¢**

**"SUPER-RIGHT" LEAN, FRESHLY GROUND BEEF** Lb. **49¢**  
**"SUPER-RIGHT" LEAN, BONELESS STEW BEEF** Lb. **59¢**

**"SUPER-RIGHT" QUALITY ALL MEAT FRANKS** 1-Lb. Pkg. **49¢**  
**ALLGOOD SMOKED FLAVORED SLICED BACON** 1-Lb. Pkg. **53¢** 2-Lb. **\$1.05**

**"SUPER-RIGHT" FRESH PORK LOIN PORK CHOPS**  
Center Cut RIB CHOPS Lb. **65¢**  
Center Cut LOIN CHOPS Lb. **69¢**  
END CUT PORK CHOPS Lb. **49¢**

**RIB THIRD PORK LOIN ROAST** Lb. **45¢**  
**LOIN THIRD PORK LOIN ROAST** Lb. **49¢**  
QUARTER LOIN SLICED IN TO PORK CHOPS Lb. **55¢**

**"Super-Right" Fresh FRYER PARTS!**

**FRYER BREASTS** Lb. **59¢**  
**FRYER THIGHS** Lb. **45¢**  
**CHOICE PARTS** COMBINATION PACKAGE Lb. **49¢**  
**DRUMSTICKS** Lb. **43¢** **LIVERS** Lb. **59¢**  
**WINGS** Lb. **29¢** **GIZZARDS** Lb. **29¢**

**CAP'N JOHN'S FROZEN BREADED FISH STICKS** 10-Oz. Pkg. **35¢** 1-Lb. Pkg. **53¢**  
**CAP'N JOHN'S CONDENSED OYSTER STEW** 10-Oz. Can **35¢**

**Ann Page Foods!**

**ANN PAGE SOUP SALE**

**ANN PAGE CONDENSED**

- VEGETABLE 4 10½-Oz. Cans **49¢**
- TOMATO
- VEGETARIAN VEGETABLE

**ANN PAGE VEGETABLE BEEF** 4 10½-Oz. Cans **59¢**

**ANN PAGE TOMATO & RICE**

**ANN PAGE CHICKEN WITH RICE**

**ANN PAGE ECONOMY SALTS**

- GARLIC SALT 3½-Oz. Bot. **19¢**
- CELERY SALT 3½-Oz. Bot. **19¢**
- ONION SALT 3½-Oz. Bot. **19¢**

**ANN PAGE PURE GROUND, BLACK PEPPER** 2-Oz. Can **25¢** 4-Oz. Can **39¢**

**GELATINS** 4 3-Oz. Pkgs. **33¢** 2 6-Oz. Pkgs. **29¢**

**ANN PAGE MACARONI & CHEESE DINNER** 2 7½-Oz. Pkgs. **39¢**

**Bakery Buys!**

**Jane Parker Crescent Pound Cake** 15-Oz. Pkg. **3** Pkgs. Of Your Choice **\$1.00**

**JANE PARKER GLAZED DONUTS**

**JANE PARKER WHITE ENRICHED REGULAR OR SANDWICH BREAD** 4 1½ Lb. LOAVES **99¢**

**Frozen Food Buys!**

**A&P GREEN PEAS** 3 10-Oz. Pkgs. **49¢** 2-Lb. **45¢**  
**A&P Fordhook Limas** 2 Lb. **59¢** **Sultana Green Peas** 4 10-Oz. Pkgs. **45¢**  
**MARVEL ICE CREAM** ½ Gal. Ctn. **53¢**

**Appetizingly-Good Groceries!**

**A&P SPECIALLY PRICED! SLICES OR HALVES YELLOW CLING PEACHES** 2 29-OZ. CANS **65¢**

**A&P VACUUM PACKED! SPECIALLY Blended Coffee** 2 Lb. Can **\$1.29**

**IDEAL FOR DRINKING OR COOKING! A&P Evaporated Milk** 3 13-Fl. Oz. Cans **49¢**

**WITH LEMON & SUGAR Our Own Instant Tea Mix** 14-Oz. Jar **59¢**

**PURE CANE, GRANULATED A&P Sugar** 5-Lb. Bag **59¢**

**20-GAL. GALVANIZED STEEL Garbage Cans** Each **\$1.99**

**A&P BRAND SHREDDED Sauerkraut** 2 1-Lb. 11-Oz. Cans **49¢**

**ARISTOCRAT SALTINE Crackers** 2 1-Lb. Pkgs. **39¢**

**PASTEURIZED MEL-O-BIT Cheese Slices** 6-Oz. Pkg. **25¢**

**A&P SOLID PACK White Meat Tuna** 7-Oz. Can **33¢**



## A&P'S EASTER CANDY

- Ann Page Marshmallow Eggs** 12-Oz. Pkg. **29¢**
- Ann Page Candy Cotton Tails** 12-Oz. Pkg. **35¢**
- Ann Page CHOCOLATE MARSHMALLOW Rabbits** 4½-Oz. Pkg. **29¢**
- Ann Page Fudge Cream Eggs** 3 2-Oz. Pkgs. **25¢**
- Ann Page Candy Pops** 36-Ct. Pkg. **29¢**
- Ann Page RED & BLACK Jelly Eggs** 1-Lb. Pkg. **29¢**
- Ann Page Non-Pareil Gum Eggs** 14-Oz. Pkg. **29¢**
- Ann Page Fruit & Nut Eggs** 6-Oz. Pkg. **35¢**

**JELLY EGGS** ANN PAGE FRUIT FLAVORED CANDY 1-Lb. Pkg. **29¢** 1¾-Lb. Pkg. **49¢**

**Fresh Fruits and Vegetables!**

**STRAWBERRIES**

**FRESH ASPARAGUS** CALIFORNIA GROWN Lb. **39¢**

**WHITE POTATOES** 10 Lb. Bag **35¢**

**CRISP CELERY** 2 Stalks **35¢**

**FRESH PINEAPPLE** Each **39¢**

**APPLES** WESTERN RED or GOLDEN DELICIOUS Lb. **25¢**

**3 PINT BASKETS \$1.00**

**Jane Parker DESSERT SHELLS** 5 oz. 6 ct. pkg. **25¢**

PRICES IN THIS AD EFF. THRU SAT., MARCH, 30th IF UNABLE TO PURCHASE ANY ADVERTISED ITEM, PLEASE REQUEST A RAIN CHECK.