

Church Notices

United Methodist

Sunday:
9:45 Church School
11:00 Worship "For Better, For Worse"
5:00 Youth Choir Rehearsal
5:30 Junior and Senior U.Y.M.
7:00 Study: The Sermon on The Mount
Monday:
3:15 Confirmation Class
6:30 Methodist Men
Tuesday:
9:00 The Group of Twelve
Wednesday:
4:00 Junior Choir Rehearsal
7:30 Boy Scouts
7:30 Chancel Choir Rehearsal
Thursday:
4:00 Cherub Choir Rehearsal
8:00 Commission on Membership and Evangelism
Saturday:
10:00 - 2:00 the W.S.C.S. is sponsoring a bake sale.

St. Paul's Episcopal

Rogation Sunday and Mother's Day
Sunday:
10:00 A.M. Church School and Bible Classes, W. J. Shearin, Supt.
11:00 A.M. Morning Prayer and Sermon
Nursery provided
Acolyte, Walter House
Altar Flowers in memory of Mary Brickell Beck
2:00 P.M. St. James, Kittrell, Evening Service
Monday:
7:00 P.M. Men of St. Paul's Supper, program by girls from St. Mary's Junior College
Wednesday:
10:00 A.M. Prayer Group
7:45 Choir Rehearsal

Louisburg Baptist

Sunday:
9:45 Church School, A. J. Dennis, Superintendent
9:45 - 12:00 Nursery for pre-school children
11:00 The Church at Worship, The Rev. A. S. Tomlinson, Pastor - Sermon subject, "A Woman For All Seasons"
11:00 Katherine M. Harris Sunbeams
11:00 Elizabeth W. Bobbitt Sunbeams
Monday:
3:30 Junior Girls' Auxiliary
Wednesday:
7:30 Senior Choir

Revival

The Church of God of Prophecy located at Rt. 1, Louisburg, N. C., is participating in a church-wide revival effort sponsored by the organization with world headquarters in Cleveland, Tennessee.
"SPIRITUAL CONQUEST", the name given to the world-wide evangelistic endeavor, will be conducted from April 6th through May 25th. The local congregation has chosen May 11-17th to conduct their revival.
Last year the 113,000 member organization, with missionaries in 42 countries, used the theme "Train Up A Child" for a similar endeavor.
Pastor Rachel Davis extends a cordial invitation to the public to attend the special services.

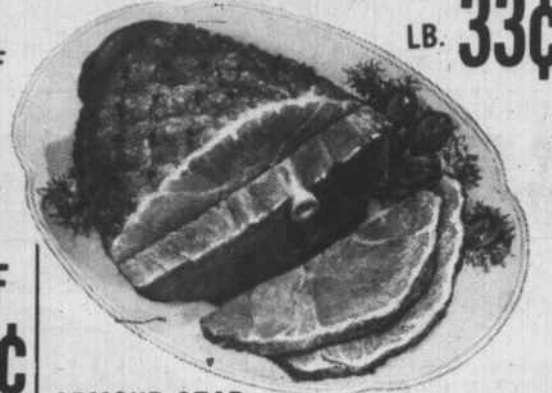


FOR SAFETY'S SAKE
DANGER!
DON'T USE ELECTRIC HEDGE CLIPPERS WHEN THE GROUND IS WET.
There is no record of church attendance having proved fatal to anyone.
We are in favor of a vacation each season of the year, now being behind several.
There are individuals who are so good for the hereafter that they are good for nothing here.



SPECIALS ON MEAT

GRADE A WHOLE **FRYERS** LB. **29¢** CUT UP LB. **33¢**



CAROLINA BRIGHTLEAF SUGAR CURED **HAMS**

CAMPFIRE **BACON** LB. **59¢**

JESSE JONES **FRANKS** 12 OZ. PKG. **49¢**

BROWN & SERVE **ROLLS** 4 PKG. OF 12 FOR **\$1.00**

WAYPACK SWEET **SALAD CUBE** 3 12 OZ. JARS **95¢**

SHANK PORTION **43¢** POUND

SHANK HALF **53¢** POUND

BUTT PORTION **47¢** POUND

BUTT HALF **57¢** POUND

ARMOUR STAR FULLY COOKED **HAMS** 3 LB. CAN **\$2.69**

food buys to make a great Mother's Day!

-FROZEN FOOD-

PET RITZ **CREAM PIES** 3 FOR **\$1.00**

DULANY TINY **GREEN LIMAS** 10 OZ. PKG. **41¢**

PLENTY MOTHER'S DAY CAKES CUP CAKES FRESH STRAWBERRIES

FRESH PRODUCE

FRESH TURNIP **GREENS** 2 LBS. **25¢**

NEW RED **POTATOES** 5 LBS. **39¢**

RED **APPLE** 4 LB. BAG **45¢**

CHARCOAL 10 LB. BAG **55¢**

LARUTA CORNED **BEEF** 12 OZ. CAN **49¢**

SANKA INSTANT **COFFEE** 4 OZ. JAR **89¢**

DIAMOND ALUMINUM **FOIL** REG. SIZE ROLL **23¢**

MARCAL **NAPKINS** 3 BOXES **29¢**

GALA **TOWELS** 3 LARGE ROLLS **1.00**

DEL MONTE

DELMONTE **CATSUP** 3 20 OZ. BOTTLES **\$1.00**

DELMONTE CRUSHED **PINEAPPLE** 2 NO. 2 CANS **69¢**

DELMONTE EARLY **GARDEN PEAS** 4 303 CANS **1.00**

DELMONTE PINEAPPLE **GRAPEFRUIT DRINK** 3 46 OZ. CANS **89¢**

NABISCO VANILLA **WAFERS** 12 OZ. BOX **33¢**

SUNSHINE MALLO **PUFF** 10 OZ. PKG. **39¢**

STRIETMAN PITTER PATER **COOKIES** 2 16 OZ. PKGS. **89¢**



DEAN FARM'S GRADE A LARGE **EGGS** DOZ. **39¢**

AUTOCRAT **ICE MILK** 1/2 GAL. **39¢**

SUN VALLEY **MARGARINE** 2 LBS. **35¢**

SEALTEST **SHERBET** QT. PLASTIC CONTAINER **39¢**

DUNCAN HINES **CAKE MIX** 3 BOXES **1.00**

NESTEA **LARGE** 3 OZ. JAR **99¢**

New! HIGH EFFICIENCY COOLING PHILCO



11,400 BTU/HR Philco Super Power room air conditioner **Cuts Operating Costs**

Gives more room-cooling BTU's for power consumed
Philco 11AC51 • High efficiency compressor, fan motor and larger cooling coils deliver more cooling on less electricity • Choice of 7 decorator fronts • Automatic thermostat • Washable air filter • Operates on 115 volts.

Philco Air Conditioners start as low as **149.95** QUALITY FURNITURE CO.

Mr. Farmer:
HAVING TROUBLE FINDING CHAMPION SODA? SEE US NOW WHILE OUR INVENTORY IS COMPLETE.
See Us Also For
AMMONIUM NITRATE A N L
8-0-24 AND
30% GOLDEN URAN
L. H. DICKENS AND SON
Route 2 - Phone 853-2117 - Louisburg, N.C.

OPEN FRIDAY NIGHTS TIL 8:30 P.M.
MURPHY'S SUPERMARKET
We Reserve Right To Limit Quantities.