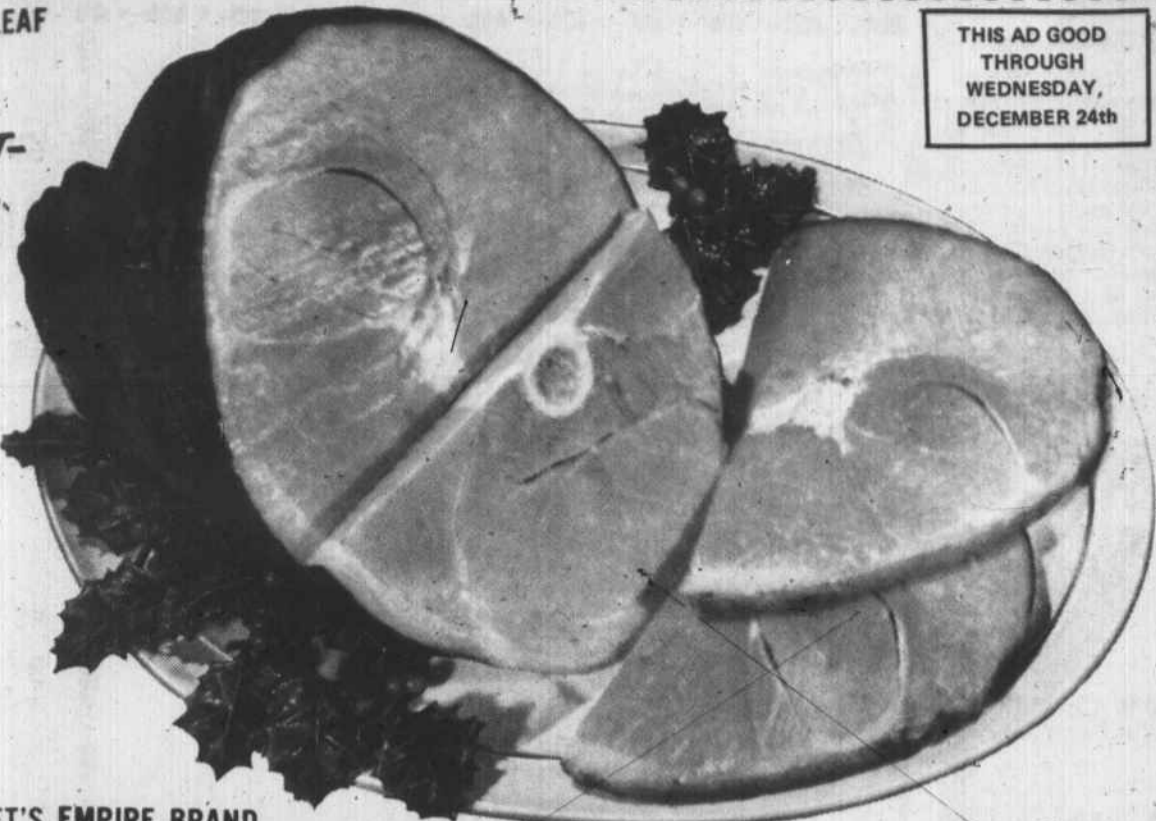


LEAF

IT-

F



THIS AD GOOD THROUGH WEDNESDAY, DECEMBER 24th

SWIFT'S EMPIRE BRAND

TURKEYS

ALSO SWIFT'S BUTTERBALLS & ARMOUR SELF BASTING TURKEYS

16 Lb. UP

FRESH CHICKEN HENS 5 To 8 Lb. Avg. **49¢ Lb.**

CAMPFIRE BACON **69¢ Lb.**

PLENTY FRESH OYSTERS STANDARD & SELECTS

candy

One Of The Largest Selections Of Christmas Candy Anywhere

- | | | | |
|---|------------|-------------------------------------|------------|
| BRACHS ALL FILLED ASSORTMENT 9 Oz. Pkg. | 39¢ | BRACH'S RIBBON CANDY 10 Oz. Pkg. | 39¢ |
| BRACH'S COCONUT BON BONS 10 Oz. Pkg. | 39¢ | BRACH'S CHOCOLATE STARS 1 Lb. Bag | 79¢ |
| BRACH'S CHOCOLATE COVERED RAISINS 1 Lb. Box | 79¢ | HARD MIX CHRISTMAS CANDY 10 Oz. BAG | 25¢ |
| BIG BEN JELLIES 1 Lb. Box | 29¢ | OLD FASHION CHOC. DROPS 2 Lb. Bag | 83¢ |

CHRISTMAS NAPKINS THREE SIZES TO CHOOSE FROM

KRAFT MARSHMALLOW CREME 7 Oz. JAR **27¢**

INSTANT **99¢**

OTOCRAT

ICE MILK **39¢**
MARTHA WHITE CAKE MIX **3 BOXES 95¢**

FROZEN FOODS

PET RITZ PIE SHELLS 3 Pkgs. OF 2 FOR **95¢**

OLD SOUTH ORANGE JUICE 6 6 Oz. CANS **1.09**

BIRDSEYE COOL WHIP qt. SIZE **59¢**

- | | |
|-----------------------------|-----------------------|
| BRIZIAL NUTS Lb. | 47¢ |
| MIX NUTS Lb. | 59¢ |
| LARGE EMERALD WALNUTS Lb. | 57¢ |
| PECANS Lb. | 49¢ 59¢ |
| CLUSTER RAISINS 12 Oz. Pkg. | 47¢ |

BOUNTY KITCHEN TOWELS 3 LARGE ROLLS **89¢**

MARCAL NAPKINS 3 70 Ct. BOXES **29¢**

Town And Country Garden Club

A Year-Round Christmas Gift

Want a Christmas gift idea that will delight several people on your list, give pleasure all year round, and fit snugly into a wide range of Christmas budgets?

Town & Country Garden Club suggests that you try giving a live plant. The amateur gardener, the college girl away from home, the bride decorating her first home, and many others who love a touch of green during winter months will appreciate your thoughtfulness.

Be careful to select a plant

which will not require elaborate attention or a carefully controlled greenhouse setting. A timely choice is the Holly Fern, which grows well without a moist atmosphere or much heat. It has glassy, leathery leaves, and needs only to be watered regularly, to be given an occasional bit of fertilizer, and to be kept away from the sun. This little touch of care will yield a graceful, decorative plant.

The Hydrangea is another plant which thrives in the house, requiring little sun,

plenty of water (while flowering), and a dose of fertilizer once a week. After its flowering period, however, the Hydrangea's branches should be cut back, and the plant itself should be put in a larger pot, in a mixture of leaf-mould and heavy loam with well-rotted manure added. During the summer, it may be put out of doors.

A relative of the popular Poinsettia (Euphorbia pulcherrima), the Crown of Thorns (Euphorbia splendens), produces flowers for months on end. It bears little resemblance to its Christmas cousin, however. The branching stem is covered with long, pointed, dark brown thorns, while the small, light green leaves grow mainly towards the tips. The flowers develop between the new leaves and have sticky little stalks and bright red bracts. The Crown of Thorns likes a sunny spot and spare amounts of water in the winter.

Since florists carry a variety of green and flowering potted plants, even shopping for this gift can be fun. What-

ever your choice, be a thoughtful giver: find out from your florist or the gardening section of your library what the proper care for the plant is. Include these instructions with your gift and let it keep giving all year long.

Futile

"Do you know that your wife is going about telling everybody that you can't keep her in clothes?"

"That's nothing. I bought her a home and I can't keep her in that either."

Trouble

"My fiancée is terribly deaf, and this has got me in awful trouble."

"How's that?"
"Well, I had to yell so loudly when I proposed to her that the woman living in the flat above has sued me for breach of promise."

When you find you cannot afford something, the best thing to do is do without it.

UL Sights On Safety

by UL Public Information Office

Christmas: Don't Make It Your "Last" Holiday

Millions of Americans are soon to begin their annual purchases of tree-trimming and decorative materials. However, the prevailing holiday atmosphere always overshadows one essential aspect of a completely merry Christmas: electrical safety.

At no other time of the year are as many potentially hazardous electrical fixtures and flammable materials used in the home. Therefore, at no other time of the year do as many people leave themselves so susceptible to open disaster, whether it be loss of life or property.

As a public service, Underwriters' Laboratories, a not-for-profit organization testing for public safety, would like to offer the following safety suggestions in order that you may have a more complete holiday season.

- Don't overload circuits.
- Don't work on light strings while plug is still connected.
- Don't stretch string lights or extension wiring.
- Don't use string lights or extensions outdoors unless the attached label specifies you may do so.
- Don't use flood lights on or near flammable material.
- Don't place electrical fixtures within a child's accessibility.
- Do buy only UL labeled string lights and cords.
- Do inspect all wiring insulation for possible deterioration, especially if it has been stored for an indefinite period.
- Do use rubber light socket gaskets where provided and replace if needed.
- Do make certain lamps are not loose in their sockets.



-Do use UL Listed, artificial trees wherever available. While not seeking to minimize the importance of any of the above points, perhaps two should be stressed: overloads and physical inspections.

Overloads are primarily created by placing more current on a wire than it can handle but not enough to cause a fuse to blow. At Christmas this is usually due to placement of too many bulbs on a single extension cord. Result: overheating; melting insulation; exposed wire; shock, electrocution or fire. Hence, always look for the capability of the wiring supplying the lighting.

Examination of insulation is a minor task but one of major importance. Wiring that has been stored in attics or cellars for a long period of time

can become vulnerable to the elements. Consequently, varying temperatures can easily affect the insulation to the point of being incapable of serving its protective purpose.

If you will attempt to follow the Do's and Don'ts we have given, you'll certainly make your Christmas merry and, more important, safer.



TOBY

GO ANYWHERE, DO ANYTHING...



IN **Hush Puppies** BRAND CASUALS

Small wonder more and more busy people reach for their Hush Puppies when the day promises to be all rush and very little rest. Hush Puppies® match the mood, fit into the scene, take you most anywhere in welcome comfort. Spring steel shanks give active feet their go; uppers are smartly smooth or 'Breathin' Brushed Pigskin® (water-repellent, soil-resistant).

TOBY: Foam-soled chukka boot; ankle high, smooth toe. Men's sizes 6½ to 13 ... \$13

FOX'S DEPT. STORE

OPEN MONDAY THRU FRIDAY TILL 8:30 P.M.
OPEN SATURDAY TILL 6 P.M.

SUDDEN BEAUTY HAIR SPRAY

ONE DAY ONLY SATURDAY, DEC. 20th

PLUS VALUE DISCOUNT

HEALTH & BEAUTY AIDS

107 W. NASH ST.,

Special!

12.5 OZ. SIZE

39¢

81¢ Value



- For the Natural Hair-Do Look!
- Extra hold without stiffness—even in damp weather