



Furniture Company, of which we present a few illustrations of its plant and products, was incorporated in 1893, when the company was inaugurated and incorporated with a capital stock of \$24,000. The officers were Captain A. M. Tate, president; R. J. Bell, vice-president; H. Tate, superintendent; H. Tate, secretary and treasurer. At that time some of the officers have been changed, Mr. J. H. Tate being president of the company. It was soon afterward found that the growth of the business required larger capital and the stock

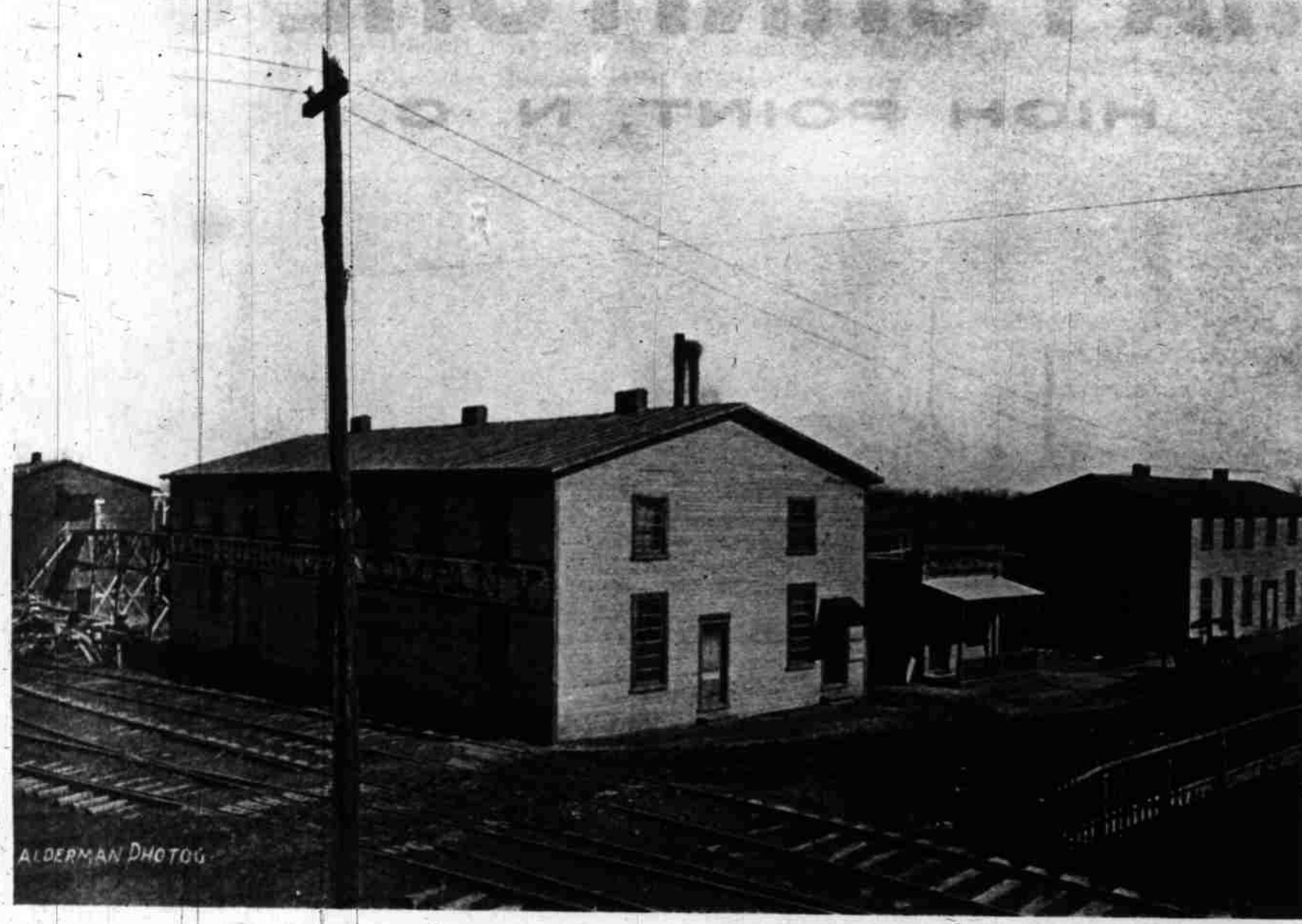
was increased to \$24,000. The number of employees was increased from fifty to eighty, who find continual and remunerative employment. The plant covers about four acres of ground and consists of several buildings, one 40 by 80 feet in dimensions, another 40 by 120 feet, another 40 by 150 feet, and still another 25 by 100 feet. The machinery is of the newest, latest and most improved patterns, turning out beautiful work with great rapidity. The products are cheap, medium and high grade furniture, which finds a ready sale throughout the states of North Carolina, South Carolina, Virginia, Tennessee, Georgia, Florida, Alabama, New York, Pennsylvania and



INTERIOR OF OFFICE.

New Jersey, and frequently shipments are made to European countries. Six traveling salesmen are kept continually on the road booking orders and the factory is always run to its full capacity. One of the secrets of the success that has attended this business has been the careful selection of the stock that enters into its product, even the cheapest grades being made and finished with the utmost care.

Located in the heart of the great North Carolina timber belt with its prolific growth of oak, ash and poplar, which can be delivered at the factory door for less by half than in many of the New England and Middle Western States, this concern is enabled to put into their product better material, better work, and better finish than any other not so favorably located. Thus, it is safe to say that the furniture dealer can find more value for his



MAIN BUILDING.

money here in High Point than elsewhere in the country. With these natural advantages on their side the Tate Furniture Company set about at the beginning of its career to establish a reputation for its goods built upon the character of the material and quality of the workmanship. How well this has been done may be vouched for by furniture dealers all over the Atlantic States and by those who are using their products in hundreds of thousands of homes.

Mr. A. E. Tate, the secretary and Treasurer of the company, the man with whom the visiting buyer comes in touch, deserves more than passing mention. He has taken an active part in the growth and development of High Point, has been associated with the city fathers, and is interested as director of the Southern Chair Company, secretary of the High Point Development Company, a stockholder in the Home Furniture Company, and secretary of the Southern Furniture Manufacturers Association.

Every furniture dealer should have in his office a catalogue of this company, which will be provided free upon application.



LUMBER YARD.

## HIGH POINT MACHINE WORKS.

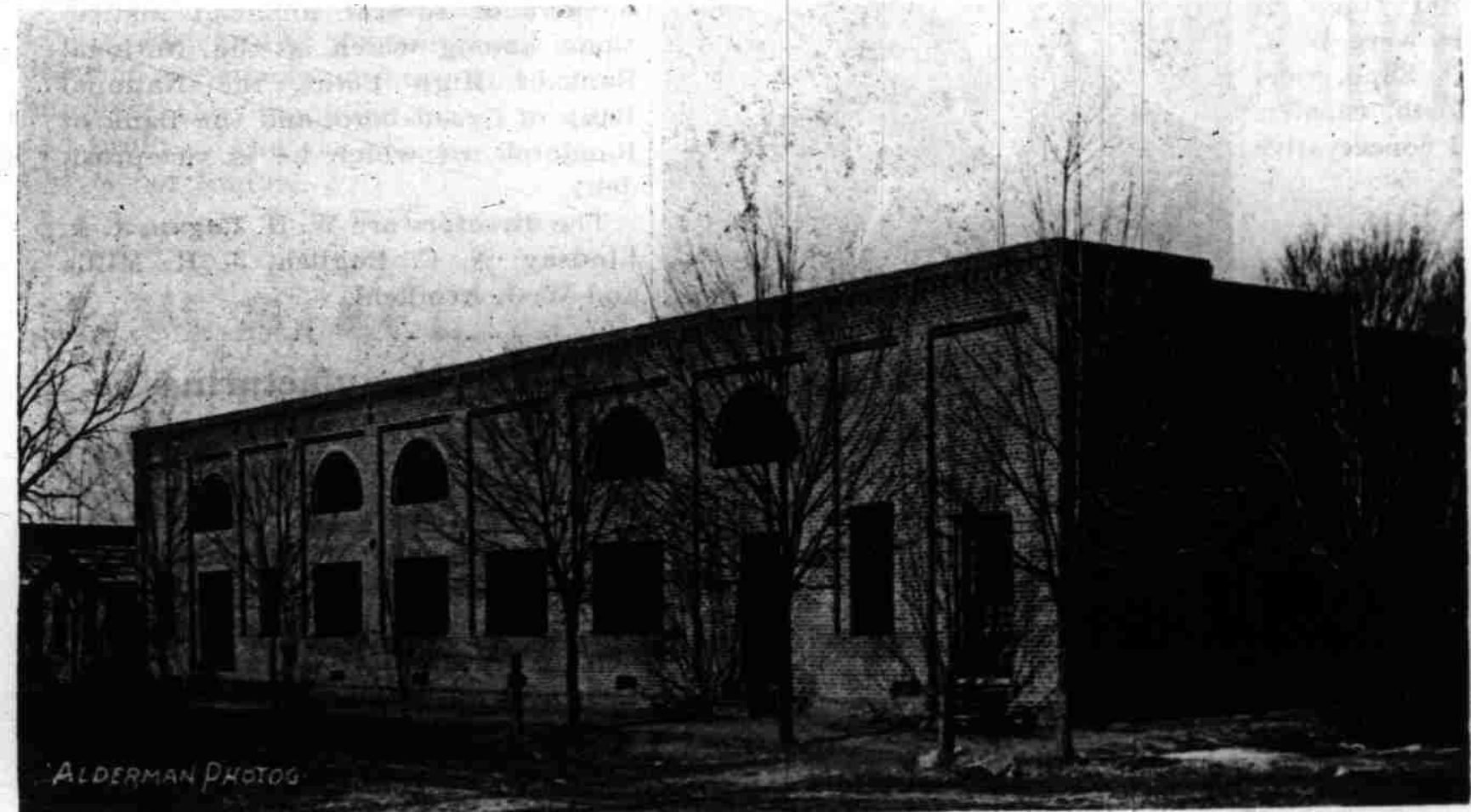
It is with great pleasure that we present to the notice of our readers an industry that is truly deserving of their patronage, and one of the most promising enterprises in the city of High Point.

In 1889 Mr. O. N. Richardson organized the company with J. Elwood Cox as president, himself as secretary and treasurer, and Mr. D. H. Parnell as superintendent. They began the manufacture of a plain slide valve engine suitable for mill work and manufacturing of every kind, built in five sizes, from fifteen to forty horse power. These engines soon established themselves on the market with a reputation for high potential power and great economy in the consumption of

steam. They are made with center crank and carefully constructed to prevent wear in all the working parts, thus insuring a long life of usefulness and little if any repair.

A great quantity of these engines have been built and placed all over the Southern states from Richmond, Va., to Appalachicola, Fla., and the demand is rapidly increasing.

As an adjunct to this line the company are State agents for the Skinner Automatic and Throttling Engine, of Erie, Pa., which is especially adaptable for high speed purposes. Over three hundred of these engines have been installed in this State and have given universal satisfaction.



THE NEW BUILDING

Aside from the manufacture of engines they are makers of Saw Mills, Mandrels, Building Castings, Horse Powers, Boiler Fronts, Cotton Mill Castings, Dye Machinery, etc., and do a large business in repair work of all kinds.

They carry a stock of Piping, Fittings, Valves, Boiler Feeders, Pumps, Belting, Files, Shafting, Hangers, Couplings, Etc.

The plant consists of four brick buildings at the corner of Hamilton and Factory streets, an addition having recently been made to their main factory building 32 by 80 feet and two stories high, giving a total floor space of about 15,000 square feet.

Their new office has just been fitted up in the most artistic manner and those who visit the plant will find both pleasure and profit in their dealings with this company.

Mr. D. H. Parnell, the superintendent of the works and a stockholder, is admittedly one of the finest machinists in the South. He gives close personal attention to the mechanical department and never permits an imperfect piece of work to leave the shop.

A great deal of attention is paid to cotton mill repairs, and the building material used in their construction. During recent years this concern has made the structural castings for nearly all the cotton mills built in the State.

A short time past J. Elwood Cox retired from the company, leaving Mr. Richardson the executive head of the business. He possesses executive ability of a high order and it is to his superb management that the splendid success which has crowned this undertaking is largely due.

