

THESE ARE THE MEN WHO SERVE YOU



T. W. SUMMERSETT



T. W. SUMMERSETT, JR.



J. L. RUSHER



C. M. TROUTMAN

Two Important Community Services

FOR MORE than twenty-two years the Summersett organization has rendered two important community services to the people of this vicinity.

With a fine, homelike establishment, the most up-to-date equipment to be had, and a thoroughly trained and experienced personnel, Summersett Funeral Service is equal to the finest offered anywhere. Due, however, to the great preference shown for Summersett Service, overhead costs are at a minimum and charges are most reasonable. This partially explains why Summersett Funeral Service is efficiently rendered anywhere in Rowan County at prices to meet the approval of people in all circumstances.

The people of Salisbury and vicinity have also long been accustomed to depending upon Summersett Ambulance Service for the transportation of the sick and injured. The car used in this connection is exclusively an ambulance, never being employed for any other purpose. The attendants, T. W. Summersett, Jr. and C. M. Troutman, have both had special training in the handling of the sick and injured. The Summersett Ambulance answers all calls within a ten or fifteen mile radius of Salisbury for a very reasonable charge.

SUMMERSETT FUNERAL HOME, Inc.

125 W. COUNCIL STREET

TELEPHONE 70

SALISBURY

—Unexcelled Ambulance Service Day and Night—

CITY and COUNTY NEWS BRIEFS

MERCHANTS HEAR ADDRESS

"Making Store Buyers Out of Window Shoppers" was the subject of a talk by Charles Adams, merchandising expert of the Westinghouse Lamp company, before the merchants of Salisbury, Spencer and nearby towns last Tuesday evening in the Community Building Auditorium. Mr. Adams' presentation was sponsored jointly by the Salisbury-Spencer Merchants Association and the Salisbury Chamber of Commerce.

"Adequate lighting in the store window and the store interior is one of the best methods of attracting customers and assisting them in making the selection of satisfactory merchandise," said Mr. Adams during his talk.

The talk was illustrated by numerous lantern slides to illustrate the merchandising points that Mr. Adams made. "Local newspaper advertising, particularly when timed with the manufacturers national magazine advertising and tied in with the window displays is a most effective modern merchandising idea," stated Mr. Adams, "the combination effected by this method increases the pulling power of both the window displays and the advertising copy."

SCOUT JAMBOREE

Scouts of this area will assemble Saturday at Camp Uwharrie for the annual jamboree. The events are scheduled to get under way at two o'clock, at which time competition in the various activities of scouting will take place.

Events this year will consist of inspection contest, first aid, fire by friction, nature, signaling and knot tying.

Following a custom of previous years, silver loving cups will be donated to the winners of the various events.

NEW FURNITURE COMPANY

H. T. Porter and R. P. Ward, of Salisbury, have opened a new furniture store on the corner of Main and Fisher streets. The new concern is to be known as the Home Furniture company. Both the owners have had wide experience in the furniture field, having been associated with the former Yarkin Furniture company of this city for the past several years.

The prize for naming the new concern went to A. R. Monroe, of Salisbury, who submitted the name Home Furniture Company.

TUBERCULAR CLINIC FOR ROWAN

A two weeks tubercular clinic for Rowan county will begin Monday, May 30. The clinic will be held in the health offices at the courthouse, with a doctor from the State sanatorium in charge.

It will be necessary for parties desirous of taking the examinations to make appointments. Only a limited number of examinations can be held during the two weeks and Dr. Armstrong urges that only those who have reason to believe they have the symptoms of T. B. to seek examination.

Several days will be set aside for examination of colored people. Announcement of these dates will follow later.

WITHDRAWS FROM RACE

Miss Carrie D. Rothrock, of Rockwell, who announced some weeks ago for the office of the register of deeds of Rowan county, has withdrawn from the race for that office.

Reason for Miss Rothrock's withdrawal is attributed to the fact that she has accepted the position of principal of a school for the coming year.

RUSH PLANS FOR NEW HOSPITAL

Meetings of the various civic and fraternal organizations have been set for Tuesday afternoon, May 24, at 4 o'clock at the chamber of commerce offices in the Community building to promote plans for the new hospital here.

The meeting is an important one and a large attendance is urged.

THOMAS A. DOTSON

Thomas A. Dotson, aged 70, died Monday night at the home of his daughter, Mrs. J. O. Vinson, 1400 North Railroad street, the deceased having been in ill health for a period of several years.

The funeral took place from the Vinson home Wednesday afternoon, conducted by the Rev. R. N. Honeycutt of Trading Ford Baptist church.

The deceased is survived by two daughters.

"Huddle" Opens At Capitol With Ramon Novarro Monday

Plenty of punch and smashing action make "Huddle" the most virile story in which Ramon Novarro has ever appeared. This fast-moving picture of modern American university life will open Monday at the Capitol Theatre.

From the minute he has his terrific fight with a laborer in the steel mill until he wins a big Varsity game for Yale, Novarro is in action constantly. His characterization as Tony Amato is entirely different from anything he has yet attempted and gives him a chance to demonstrate his genuine ability at handling varied types of roles.

The football scenes show such famous All-American and noted gridiron stars as Ernie Pinckert, Marger Aspit, Jess Hibbs, Gene Clark, Dale Van Sichel and Don Hill in action. Plays used by leading American universities in big games were filmed with a special "telescopic lens" which enables observers to follow the action closely.

True Campus Background

Campus "atmosphere" shows many actual Yale scenes filmed by technical experts from the university. Reproductions of the many famous buildings and quadrangles will warm the hearts of "old grads" and many thousands who have visited the institution.

Novarro's supporting cast includes Madge Evans in the feminine lead; Una Merkel, whose amusing Southern drawl is very much in evidence when she is exercising her wiles on the college men; Ralph Graves as the fighting coach who helps Novarro to adjust himself to college life; John Arledge, Frank Albertson, Kane Richmond, Mantha Sleeper, Henry Armetta, Ferike Boros, Rockcliffe Fellows and Joe Sauer.

Sam Wood, of "So This Is College" and "One Minute to Play" fame, applied his knowledge of college life to putting authentic touches in the picture, which was adapted from the Francis Wallace story.

PRISONER CAPTURES JAIL

For 10 hours on Saturday, James Sizemore was king of the "bull pen" in the Charlotte jail after he had snatched a pistol from a policeman. Sizemore, held as an insane person, appeared immune to the efforts of tear gas and was finally disarmed by a trick.

KING KLOTHERS

"KEEN KLOTHIERS"

10 Days Only

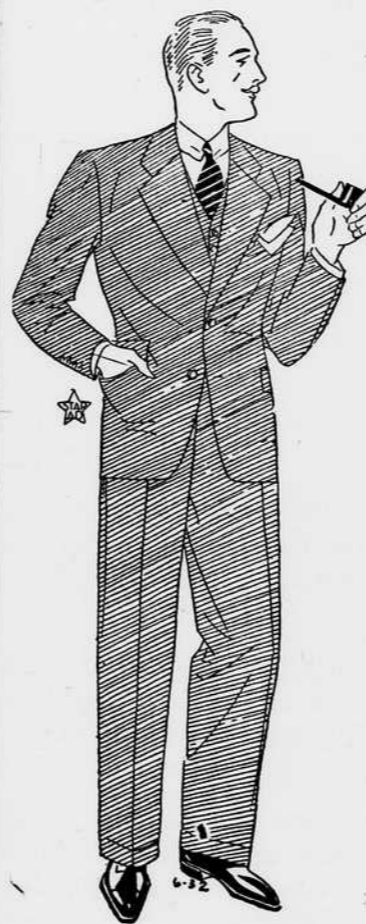
This drastic reduction is for a limited time only. After 10 days the price of every King Klothes suit will be \$12.50.

We urge you to take advantage of this saving never before offered to the public. Come early and make your choice of any suit in the store for only

\$10.00

SALE STARTS
FRIDAY MORNING
MAY 20TH
DOORS OPEN 8 A. M.

ALL WOOL SUITS---CELANESE LINED!



This is our contribution to our many friends and customers -- Not a few odd suits to choose from, but a whole store full -- You only have a short time to buy these garments -- If you neglect to make your purchase early, it will mean taking your choice from a stock that several hundred customers have picked over.

The Newest Spring Patterns designed in the very latest styles--Platinum-Fawn and University Grays in Crashes, Hopsacks, Basket Weaves and Cassimeres--Marvello Blues, Pecan Tans, Coffee Browns and Banker Greys in Worsteds, Twist Cloths, Diagonals, Herrinbones and Plains--Blue and Gray Cheviots--and every suit is guaranteed all wool with Celanese Lining.

PANTS THAT SOLD AT \$4.00 AND \$5.00

NOW \$2.00

CORNER MAIN AND INNES STREETS
PILOT BUILDING SALISBURY, N. C.