

INDIANS MASSACRE GUILFORD QUAKERS 26 TO 0

Tribesmen Score Thrice In First Quarter Drive

Meehan, Lundholm, Clark Plunge Over For All Tallies

(From The Pioneer)

Before many visitors, alumni, and students, the Catawba Indians displayed fine brand of football by defeating the Guilford Quakers 26-0.

The afternoon was featured with the dedication of the new steel stadium. The Quakers kicked off to Catawba; Pritchard taking the ball on his own fifteen, and returning it to the forty. Charley Clark added five yards, and Shippy Meehan took the ball to the other side of the mid-stripe on a line play. On two end plays, Clark pushed the ball up to the twenty. Meehan hit center for two and then plunged to the fifteen. Clark then circled end for the score. Meehan made the extra point good.

The Quakers received the kickoff, but did not go any where. They could not gain an inch through the line, and were forced to punt to Pritchard on the thirty-eight. Meehan and Pritchard, on three plays, advanced the ball to mid-field. Clark then jogged around end and paced off fifteen more yards. He and Meehan then made it a first down of the Quaker eighteen. A Guilford off-side penalty coupled with two plunges from Meehan placed the ball on the five yard stripe. On two more plays, Red plunged over for the score. Lundholm then replaced him, and kicked the extra point.

Guilford kicked to Don Peiffer, sub for Pritchard, and the Waynesboro flash returned it thirty yards before being dumped. He then hung up thirty more on an end play, placing the ball on Guilford's thirty-nine. Lundholm made three off-tackle and Clark six around end. Lundholm and Clark then made it a first down on the visitor's ten. The "Jersey Bing" then pushed it over for six more points. His kick was wide. The quarter ended with the score 20-0.

The last tally came early in the third period. The Indians received the kick on its thirty-six yard line. Clark and Meehan alternated to bring the ball to the forty-eight. Drives and end plays by Meehan, Pritchard, and Clark brought the ball up to the five yard line. From here Clark paced through for a touchdown. The try for the point was blocked.

Coach Kirkland played his entire second team during the second quarter. This boy Peiffer along with Lundholm look plenty good. Dinges looked like the Ding of old on a few of the plays.

With an open date next week, the boys should have a bit of a rest and then buck up against the Geo. Washington team. The bunch is plenty tough, but the Indians will cut that score down much lower than it was last year.

Catawba (26)	Guilford (0)	
Nash	LE	Ragan
Reid	LT	Sadler
Newman	LG	Boyles
Rector	Center	Byrd
Briggs	RG	Boles
B. Guy	RT	McDonald
Horn	RE	Nau
Meehan	OB	Chambers
Clark	HB	Acree
Pritchard	HB	Brinkley
Maggiolo	FB	Lentz

Score by periods:
Catawba 20 0 6 0—26
Guilford 0 0 0 0—0

Scoring touchdowns: Clark 2, Meehan, Lundholm (sub for Meehan). Extra points: Meehan and Lundholm (placements). Substitutions: Catawba—Lundholm, Peiffer, Dinges, Smith, Heckman, backs; Fuller, Lackey, tackles; Williams, Frantz, Fulmer, guards; Davis, Morrison, Giladette, ends; Laughridge, center. Guilford—Cipo, Tilson, Capella, backs; McCommons, Archer, ends; Binford, McInnis, Lemmonds, tackles; Johnson, Overman, guards. Officials: Perry (Elon), referee; Auker (Davidson), umpire; Maus (North Carolina), headlinesman.

In 1932 Temple U. lost but one game; a new coach was hired for the next season.

Appalachian Tilt Revives Old Feud With New Thrills

By Paul Caldwell

The feud between the Hatfields and the Coys had nothing on the feud between the Appalachian Rippers and the Catawba Indians who meet at Shuford Field November 7 for the first time since 1932.

Coached by Kid Brewer, former Duke backfield ace, and Flucie Stewart, former all-state tackle at Furman, the Rippers have developed into one of the strongest eleven in the south and a dangerous contender for the North State Conference title. Led by Len Wilson, a powerful hard-driving 194 pound halfback from Boone, the Rippers have swept aside all competition this season, and their scoring record for the year tops all football outfits in the south. In the first game of the season, the Rippers used six different teams against Piedmont as they turned in a 105-0 victory. Since that massacre they have subdued Lenoir Rhyne 14-0, Guilford 52-0, and Western Carolina 20-0.

The Redskins look forward to their annual contest with Lenoir Rhyne because of the traditional background. They are always anxious to meet Elon because Head Coach Gordon Kirkland likes to play his Alma Mater. But the coming game with the powerful Mountaineers of Appalachian renews one of the most bitter rivalries of any two schools in Dixie. Games of former years attracted record-breaking crowds and larger cities made bids for the playing site.

This year's game between two of the most talked about and outstanding eleven of the North State division will probably pack more thrills, more color and more real action than any of the previous tilts which have all been more thrilling than a rip-roaring cinema western.

The game will be important because it is the final conference game for the Rippers, and a victory will give them the title or at least a tie for the title.

A defeat for the Indians will probably drop them from the ranks of the title contenders. All in all the game will be the first major game of the 1936 conference race, and the probably conference champions may hinge on the outcome of the Appalachian-Catawba battle.

A glance at the past records of the Ripper-Indian games reveals a rivalry that mere words could not express. The games have always been close, and they have always been hard-fought.

Came 1930 and Uncle Charlie Moran of Centre College fame had taken over the coaching duties at Catawba. His first Catawba eleven made the best record of any team in the school's history. The Indians ran up a total of 287 points against opponents 19; they won eight games and lost none, but the only blot on their otherwise perfect record was a 13-13 tie with the Appalachian Rippers.

Glee Club Concert Heard By Methodists

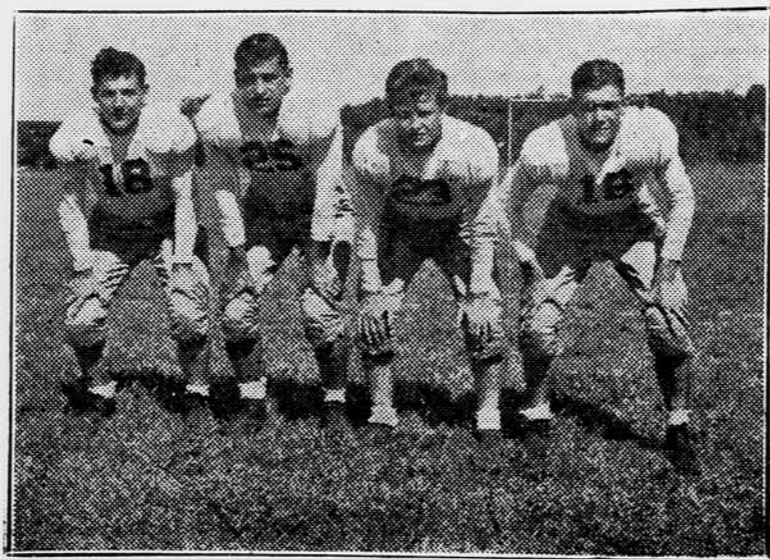
On Friday evening, October 23, before an audience of eight hundred people the Glee Club of Catawba college opened its 1936-37 season with an initial program including such works as Bach's "Death, Death, I do Defy Thee," "Deep River," and "Doxology."

This program was presented to the Western North Carolina Methodist Conference, which was probably the largest conference to be held in the south, and was the second to be held in Salisbury. Organizations of the College tried to help make it a success.

The program presented included "Death, Death," from Bach Motet "Jesu Meine Freunde," "Deep River," as arranged by Professor Arthur Rich and "Doxology" Goudiel version, which musicologists and church historians consider the most authentic version we have.

The visitors were delighted with the excellent presentation and program, and the Glee Club received much praise. There were seventy-five members to sing which is a good representation for a student body of this size.

Varsity Indian Backfield



Above is pictured the varsity backfield of the Catawba Indians. Reading left to right are Sammy Pritchard, Tony Maggiolo, Red Meehan, and Charlie Clark. This quarter, with the aid of their line, ran through the Guilford Quakers with the greatest of ease, scoring twenty points during the first quarter of the Homecoming game. The boys are clicking like the best of Waltham watches, and will give Appalachian something to think about. Watch them go next Saturday.

Blue Masque Opens Twelfth Season At Initial Meeting

"The Rescue" Presented Before Thespian Group

From The Pioneer

The Blue Masque formally opened its twelfth season at the first monthly meeting Friday evening, October 16, in the college auditorium. Paul Strauch, president of the organization, presided. After the introduction of the officers of the club, he presented Mrs. Busby, the advisor and director of Blue Masque, who has been greatly responsible for the success of the organization.

Mrs. Busby welcomed both the old and new members of the club. She expressed her appreciation of the fact that thirty-two new students were eligible for membership this year. She also asked that each member cooperate in the selling of Blue Masque season tickets, which will take place within a few weeks.

The main feature of the evening's program was the presentation of a one-act play, "The Rescue" by Rita C. Smith. The play was under the direction of Paul Strauch. The cast included: Aunt Elvira Warden, Catherine Sykes; Anna Warden, Dorothea Hupper; Kate, Melva Peifly.

Each character was interpreted with skill. Miss Sykes portrayed the part of an old aunt who was the last of her family in which there had been a streak of insanity. She appeared as a very erratic person whose dignity and honor would not allow her to reveal this to her young niece. The living room of the Warden home added to the dignity and gloom that hovered over the three characters lives. Miss Hupper, the grief-stricken niece, had not been given the chance to feel young and natural. The very first attempt she made to lead a normal life made her aunt immediately fear that she, too, was losing her mind. The young girl had lived in this strained atmosphere so long that it began to affect her nerves. She attempted to go out in the world on her own. In this she was encouraged by Kate, the family maid. Miss Peifly, who portrayed this part was the typical ignorant maid. So interested was she in the happiness of Anna she told her a falsehood in order to give her encouragement. This was "the rescue".

After the presentation of the play, the floor was opened for criticisms. Both favorable and unfavorable remarks were made by members, and guests. On the whole, the critics were very constructive, giving due credit to the cast, director, and property mistresses. Those in charge of make-up and properties were Marjion Blodgett, Lorna Bode, and Eleanor Smith.

A social hour was held for members and guests before the adjournment of the meeting. Guests for the evening included faculty and associate members.

The officers introduced were: Paul Strauch, president; William Gerhardt, vice president; Dorothea Hupper, secretary; Herbert Stoelman treasurer; and Dorothy Selbridge, social chairman.

Centre College was the first Southern school to have two football players named on Walter Camp's All America team in one year. The players were Bo McMillin, now coach of Indiana U., and Red Weaver

Legal Notices

SALE OF VALUABLE REAL ESTATE IN MORGAN TOWNSHIP

Pursuant to the terms of a certain Mortgage Deed of Trust, executed by I. L. Oldham, and wife, Mattie Oldham, to R. Lee Wright, Trustee, which is recorded in the Office of the Register of Deeds for Rowan County, in Book Oct. 30—Nov. 20.

of Mortgages No. 110, page 151, default having been made in the payment of the indebtedness thereby secured, and at the request of the holder of such indebtedness, the undersigned will expose for sale, at public auction, for cash, at the Court House Door, in the City of Salisbury, on Saturday, the 28th day of November, 1936, at 12 o'clock M. the following described real estate:

A certain tract of land lying about ten miles Southeast from Salisbury, North Carolina, and about one mile East of the Depot at Gold Hill, North Carolina, and being in Morgan Township:

Beginning at a stake on a Reserved Roadway; corner to Tract No. 13 and on the line of Tract No. 15, and running thence North 86 deg. West with the lines of Tracts Nos. 13 and 14, 33.00 chains to a stake on the line of Tract No. 14, corner of Tract No. 18; thence with the line of Tract No. 18, South 4 deg. West 15.15 chains to a stake, corner to Tract No. 17; thence with the line of Tract No. 17, S. 86 deg. East, crossing Reedy Branch, 33.17 chains to a stake, corner of Tract No. 17, and on the line of Tract No. 15; thence with the line of Tract No. 15, North 4 deg. East, 15.15 chains to a stake, the beginning corner and containing 50 acres, more or less, and being Tract No. 16, according to the map of the property of Mrs. E. Graf, recorded in Map Book No. 1, page 114, in the office of the Register of Deeds for Rowan County, North Carolina, and made by C. M. Miller, C. S. November, 1914. See deed in Book of Deeds No. 202, page 157.

For back title, see Will of Mrs. E. Graf, recorded in Will Book No. 8, at page 564, in the office of the Clerk of the Superior Court for Rowan County, North Carolina. This October 27, 1936. R. LEE WRIGHT, Trustee. Oct. 30—Nov. 20.

SALE OF VALUABLE REAL ESTATE IN MORGAN TOWNSHIP

Pursuant to the terms of a certain Mortgage Deed of Trust, executed by I. L. Oldham, and wife, Mattie Oldham, to R. Lee Wright, Trustee, which is recorded in the office of the Register of Deeds for Rowan County, in Book of Mortgages No. 113, page 180, default having been made in the indebtedness thereby secured, and at the request of the holder of such indebtedness, the undersigned will expose for sale at public auction, for cash, at the Court House Door in the City of Salisbury, on Saturday, the 28th day of November 1936, at 12 o'clock M. the following described real estate:

Lying and being in Morgan Township, Rowan County, and bounded and described as follows, to-wit:

Beginning at a stake in I. L. Oldham's line, corner to Tract No. 16, and runs thence with line of Tract No. 16 and 17, S. 4 deg. W. 30.45 chains to a stake in the center of Road; thence with center of Road N. 86 deg. W. 16.13 chains to a stake, corner to Tract No. 21; thence N. 3 1-4 deg. E. 30.50 chains to a stake, corner to Tract No. 14; thence with line of Tract No. 14, S. 86 deg. E. 16.30 chains to the beginning corner, on Tract No. 16, and being Tract No. 18, containing 50 acres, as shown by map of Mrs. E. Graf, recorded in Book of Maps, at page 114, in the office of the Register of Deeds for Rowan County, N. C. Also see deed from MacCausland, Graf and others, to Mrs. Mattie Oldham, dated Aug. 21, 1929. See deed book No. 209, page 271.

On the above tract is a house where I. L. Oldham now lives. This October 27, 1936. R. LEE WRIGHT, Trustee. Oct. 30—Nov. 20. Buy In "Greater Salisbury".

MORTGAGE SALE OF REAL ESTATE

Pursuant to the provisions of a certain mortgage deed of trust executed by Arthur Carr and wife, Rebecca Carr, to C. O. P. Trexler, Trustee, registered in the Register's office of Rowan County, in Book of Mortgages No. 99, page 12, default having been made in the payment of the indebtedness thereby secured, and at the request of the holder thereof, the undersigned trustee will sell at public auction to the highest bidder, for cash, at the Courthouse door in Salisbury, N. C., on Saturday, November 28, 1936, at 12 o'clock noon, the following described real estate to-wit:

Lot No. 1. In Mt. Ulla Township, adjoining lands of Ernest Carr, Maggie and George Chambers and A. Fearnese, beginning at a stone corner of lot No. 4 and runs S. 86 1-2 deg. E. 3.62 chs. to a stone corner of lot No. 4, thence S. 86 1/2 deg. E. 3.16 chs. to a stone, original corner of the Jane Carr tract, thence with the old line S. 3 de. W. 3.60 chs. to a stone, the original J. Carr corner, thence N. 86 1/2 deg. W. 3.16 chs. to the beginning containing 1.13 acres, and being Lot No. 5 in the division of the J. Carr Estate.

Lot No. 2. In Mt. Ulla Township adjoining the land of Monroe Cowan, Frank Chamber, Garfield Carr, and others, beginning at a stake at M. Cowan's corner, the original J. Carr line 3.62 chs. to a stake, thence S. 86 1/2 deg. E. 3.16 chs. to a stone, corner of lot No. 2. G. Carr's corner, thence with G. Carr's line S. 3 deg. W. 3.62 chs. to a stake, corner of lot No. 2 on original J. Carr line, thence on original J. Carr line N. 86 1/2 deg. 3.16 chs. to the beginning, containing 1.13 acres, and being lot No. 1 in the division of the J. Carr Estate. This the 23rd day of Oct. 1936. C. O. P. TREXLER, Trustee and Transferee. Oct. 30—Nov. 20.

Save on HOLIDAY FOODS

TOMATOES 4 No.2 cans	29c
Grimes Best	24-lb sack
FLOUR	75c
Fancy Head	lb
Blue Rose	5c
RICE	Each
Wards White or Yellow	15c
POUND CAKE	tall can
Choice Pink	10c
SALMON	
Pet	3 tall cans
MILK	22c
CHOICE	peck
Apples	30c
WHITE	
Potatoes 10lbs	29c
Cabbage lb	2 1-2c
FIRM	
Lettuce hd	10c
Celery stk	10c
NEW	
Nucoa	1b 22c
SPUNKY	
Dog Food	can 5c
FAMOUS 50	
Cocoa 2-lb can	15c
SUGAR lb	5c

MEATS

COUNTRY PORK	Sausage 1b	25c
MIXED	Sausage lb	12 1-2c
FAT	Backs 1b	12 1-2c
SLICED	Bacon 1b	29c
GOOD GROUND	Beef 1b	12 1-2c
MEATY BEEF	STEW 1b	10c
MEATY PORK	Ribs 1b	18c
	Neck Bones lb	10c
RED FINN	Croakers 3 lbs	25c

A GOOD VARIETY OF COLD MEATS FOR PARTIES OR LUNCHEONS

OYSTERS

LASH BROS.

125 E. COUNCIL ST. WE DELIVER PHONE 9193