

Calendar for September 1896 showing days of the week and dates.

MOON'S PHASES table with columns for Moon, Sun, and Quarter, and corresponding times.

TWO FAMOUS PREACHERS

Express Opinions on the Political Situation.

DR. PARKHURST AND DR. TALMAGE

The Former Preaches a Gold Sermon and Displeases Some of His Congregation. Dr. Talmage Opposed to Politics in the Pulpit.

NEW YORK, Sept. 23.—Rev. Dr. Charles H. Parkhurst signaled his return from Europe to the pulpit of Madison Square Presbyterian church yesterday by preaching a sermon on the political situation.

"There is more in this thing than the silver question, and some Sunday in the near future I am going to speak my mind about the treatment of labor by capital. I will not mince words, either."

One of the visitors to the church was Treasurer William P. St. John, of the Democratic national committee. He did not wait to hear all the doctor had to say.

The preacher led up to what he had to say about the campaign by an argument in which he tried to show that it was impossible to make anything without material and impossible to build a structure without a good foundation.

"We are building forward into the future without knowing what we are building upon, or knowing whether we are building upon anything in particular that contains in itself the indispensable elements of permanence."

"I am not here to argue financial questions, but the present situation in our country is an illustration on a portentous scale of the truth I am trying to drive home that you cannot move with vigor nor strike with effect except as you feel on the instant the everlasting fixity of the rock your foot is planted upon."

"National prosperity will come back when confidence comes back, and confidence will return when the nation gets its feet out of the quagmire and back to granite. Traffic not only, but all the relations of our great communal life are conducted on the credit system, on a system of mutual confidence, and today that mutual confidence does not exist."

DR. TALMAGE ON POLITICS.

He Thinks Political Sermons Will Impair a Preacher's Usefulness.

WASHINGTON, Sept. 28.—Rev. T. DeWitt Talmage, in his sermon at the First Presbyterian church yesterday, made the following allusion to the presidential campaign:

"During the last six presidential elections I have been urged to enter the political arena, but I never have and never will turn the pulpit in which I preach into a political stump. Every minister must do as he feels called on to do, and I will not criticize him for doing what he considers his duty, but all the political harangues from pulpits from now until the 3d of November will not in all the United States change one vote, but will leave many ears stopped against anything that such clergymen may utter the rest of their lives."

This statement was followed by a reference to the depression now prevailing throughout the country, and he said that never within his memory had "so many people literally starved to death as in the past few months."

NERVOUS Troubles are due to impoverished blood. Hood's Sarsaparilla is the One True Blood Purifier and NERVE TONIC.

WILLIAMS FOR GOVERNOR.

Two Factions of Massachusetts Democrats Name the Silver Orator. BOSTON, Sept. 28.—The silver Democratic delegates who remained in Music Hall all Friday night held their state convention on Saturday and nominated George Fred Williams for governor.



GEORGE FRED WILLIAMS.

changed the meeting place to Faneuil Hall. There too the Williams men were in the majority, and Williams was again nominated for governor.

Bryan's Reception in Boston. BOSTON, Sept. 26.—The audience which greeted Mr. Bryan at Boston Common was the largest which he has faced since he started on his eastern tour.

Thacher Retires from the Race. ALBANY, Sept. 28.—John Boyd Thacher, in a statement of 1,000 words has declined the Democratic nomination for governor of New York.

Perhaps a Wholesale Poisoner. CHICAGO, Sept. 28.—Startling developments surrounding the mysterious death of Emma Bartels at the home of Dr. C. W. Winters, No. 108 South California avenue, Sept. 10, has resulted in the arrest of the physician on the charge of murder.

Murdered and Placed on the Track. TOWANDA, Pa., Sept. 28.—The body of J. E. Compton, of Waverly, N.Y., was found wedged between the ties of the Lehigh Valley railroad bridge, at this place, and he died without making a statement.

DR. TALMAGE ON POLITICS. He Thinks Political Sermons Will Impair a Preacher's Usefulness.

WASHINGTON, Sept. 28.—Rev. T. DeWitt Talmage, in his sermon at the First Presbyterian church yesterday, made the following allusion to the presidential campaign:

"During the last six presidential elections I have been urged to enter the political arena, but I never have and never will turn the pulpit in which I preach into a political stump. Every minister must do as he feels called on to do, and I will not criticize him for doing what he considers his duty, but all the political harangues from pulpits from now until the 3d of November will not in all the United States change one vote, but will leave many ears stopped against anything that such clergymen may utter the rest of their lives."

This statement was followed by a reference to the depression now prevailing throughout the country, and he said that never within his memory had "so many people literally starved to death as in the past few months."

NERVOUS Troubles are due to impoverished blood. Hood's Sarsaparilla is the One True Blood Purifier and NERVE TONIC.

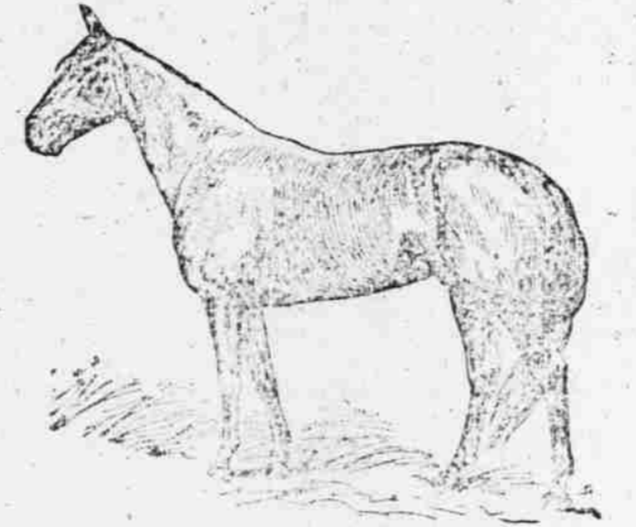
GENTRY'S GREAT MILE.

He Covers the Distance in Two Minutes and a Half Second, CREATING A NEW WORLD'S RECORD

The Great Pacer Reached the Half Mile Post in Less Than a Minute, and Made the Last Quarter in Thirty and a Quarter Seconds.

PORTLAND, Me., Sept. 25.—John R. Gentry yesterday, at Rigby Park, paced the fastest mile ever made in harness, and placed the world's record at 2:09 1/2. The day was cold, and a light northwesterly wind was blowing up the stretch when John R. Gentry, with W.S. Andrews upon the sulky, came out to go against his record of 2:01 1/2, made on Sept. 8 of this year at Glens Falls, N. Y.

The runner was at the pacer's throat latch as they made the first turn on the stretch. Gentry went steadily and with apparent ease, the runner having hard



JOHN R. GENTRY.

work keeping his position. The judges caught the quarter mile at 2:03 seconds, and the second quarter was made in 3:04 seconds, making the half mile in 5:07.

As they turned into the home stretch and caught the wind in the teeth the crowd began to yell wildly, and both drivers commenced to sing encouragement to their horses and to use the whip a little. With the shouting of the crowd, which was now cheering like mad, the pacer spurred for the wire, and considering that he had the wind in his teeth, made the most remarkable quarter of the heat, in 3:04, making the mile in two minutes and one-half second, just one second less than the former best record first made by Robert J. at Terre Haute in 1886, and equalled this year by John R. Gentry.

When Starter Culbertson announced the time, the crowd broke through the fence and crowded out on the track and around the pacer, cheering wildly. It is believed that had Gentry not had to contend with the wind he would have made the mile in two minutes easily.

The Reading Sold by Auction. PHILADELPHIA, Sept. 24.—The most extensive auction sale that ever took place in this country was held yesterday in the train shed of the old Philadelphia and Reading Railroad company at Thirteenth and Callowhill streets.

Major McKinley's Busy Week. CANTON, O., Sept. 28.—Major McKinley spent Sunday very quietly. He and Mrs. McKinley took dinner at the home of Mr. and Mrs. M. C. Barber, Mrs. Barber being Mrs. McKinley's sister.

General Palmer's Speechmaking. WASHINGTON, Sept. 28.—Senator John M. Palmer, of Illinois, the presidential candidate of the National Democratic party, arrived in the city yesterday afternoon from Philadelphia.

Officers of the Tug Dauntless Arrested. BRENSWICK, Ga., Sept. 26.—Three arrests of persons connected with the trip of the alleged filibuster tug Dauntless were made last night on warrants sworn out by Spanish Consul Delago, charging violation of the neutrality laws.

Have you seen our Straw Hats? M. T. Young. Big line Summer Clothing at M. T. Young's. See G. S. Tucker & Co's side boards.

CASTORIA. The fac-simile signature of Chas. H. Fletcher is on every wrapper.

Cape Fear and Yadkin Valley Ry.

CONDENSED SCHEDULE In effect Dec. 8, 1896.

NORTH BOUND. No 2 DAILY.

Table of train schedule for North Bound, No 2 Daily, listing stations and times.

SOUTH BOUND. No 1 DAILY.

Table of train schedule for South Bound, No 1 Daily, listing stations and times.

NORTH BOUND. No 4 DAILY.

Table of train schedule for North Bound, No 4 Daily, listing stations and times.

SOUTH BOUND. No 3 DAILY.

Table of train schedule for South Bound, No 3 Daily, listing stations and times.

NORTH BOUND. No 16 MIXED DAILY except Sunday.

Table of train schedule for North Bound, No 16 Mixed Daily, listing stations and times.

SOUTH BOUND. No 15 MIXED Daily except Sunday.

Table of train schedule for South Bound, No 15 Mixed Daily, listing stations and times.

NORTH BOUND CONNECTIONS at Fayetteville with Atlantic Coast Line for all points North and East.

SOUTH BOUND CONNECTIONS at Walnut Cove with the Norfolk & Western Railroad for Winston-Salem.

At Atlanta—For Montgomery, Mobile, New Orleans, Texas, Mexico, California, Macon, Pensacola, Selma and Florida.

At Portsmouth—With Bay Line, coastwise steamers, Washington steamers and Cape Charles Route, to and from all points North and East.

NO EXTRA FARE ON ANY TRAIN. For Tickets, Sleepers, and Information, apply to Ticket Agents, or to T. J. ANDERSON, General Passenger Agent.

E. ST. JOHN, Vice-President and Gen'l Manager. H. W. B. GLOVER, Traffic Manager.

GENERAL OFFICES, PORTSMOUTH, VA.

ATLANTIC COAST LINE

WILMINGTON AND WELDON RAILROAD AND BRANCHES AND FLORENCE RAILROAD.

CONDENSED SCHEDULE TRAINS GOING SOUTH.

Table of train schedule for Atlantic Coast Line, South Bound, listing stations and times.

TRAINS GOING NORTH.

Table of train schedule for Atlantic Coast Line, North Bound, listing stations and times.

Train on Scotland Neck branch from Weldon 3:55 p.m. Daily.

Train on Washington branch from Weldon 5:50 a.m. and 3:30 p.m. Daily.

Train on Plymouth branch from Weldon 7:30 a.m. and 4:30 p.m. Daily.

Train on Clinton branch from Weldon 8:30 a.m. and 5:30 p.m. Daily.

Train on Norfolk branch from Weldon 9:30 a.m. and 6:30 p.m. Daily.

Train on Portsmouth branch from Weldon 10:30 a.m. and 7:30 p.m. Daily.

Train on Norfolk branch from Weldon 11:30 a.m. and 8:30 p.m. Daily.

Train on Portsmouth branch from Weldon 12:30 p.m. and 9:30 p.m. Daily.

Train on Norfolk branch from Weldon 1:30 p.m. and 10:30 p.m. Daily.

Train on Portsmouth branch from Weldon 2:30 p.m. and 11:30 p.m. Daily.

Train on Norfolk branch from Weldon 3:30 p.m. and 12:30 p.m. Daily.

Train on Portsmouth branch from Weldon 4:30 p.m. and 1:30 p.m. Daily.

Train on Norfolk branch from Weldon 5:30 p.m. and 2:30 p.m. Daily.

Train on Portsmouth branch from Weldon 6:30 p.m. and 3:30 p.m. Daily.

Train on Norfolk branch from Weldon 7:30 p.m. and 4:30 p.m. Daily.

Train on Portsmouth branch from Weldon 8:30 p.m. and 5:30 p.m. Daily.

Train on Norfolk branch from Weldon 9:30 p.m. and 6:30 p.m. Daily.

Train on Portsmouth branch from Weldon 10:30 p.m. and 7:30 p.m. Daily.

Train on Norfolk branch from Weldon 11:30 p.m. and 8:30 p.m. Daily.

Train on Portsmouth branch from Weldon 12:30 a.m. and 9:30 p.m. Daily.

Train on Norfolk branch from Weldon 1:30 a.m. and 10:30 p.m. Daily.

Train on Portsmouth branch from Weldon 2:30 a.m. and 11:30 p.m. Daily.

Train on Norfolk branch from Weldon 3:30 a.m. and 12:30 p.m. Daily.

Train on Portsmouth branch from Weldon 4:30 a.m. and 1:30 a.m. Daily.

Train on Norfolk branch from Weldon 5:30 a.m. and 2:30 a.m. Daily.

Train on Portsmouth branch from Weldon 6:30 a.m. and 3:30 a.m. Daily.

Train on Norfolk branch from Weldon 7:30 a.m. and 4:30 a.m. Daily.

Train on Portsmouth branch from Weldon 8:30 a.m. and 5:30 a.m. Daily.

Train on Norfolk branch from Weldon 9:30 a.m. and 6:30 a.m. Daily.

Train on Portsmouth branch from Weldon 10:30 a.m. and 7:30 a.m. Daily.

Train on Norfolk branch from Weldon 11:30 a.m. and 8:30 a.m. Daily.

Train on Portsmouth branch from Weldon 12:30 p.m. and 9:30 a.m. Daily.

Train on Norfolk branch from Weldon 1:30 p.m. and 10:30 a.m. Daily.

Train on Portsmouth branch from Weldon 2:30 p.m. and 11:30 a.m. Daily.

Train on Norfolk branch from Weldon 3:30 p.m. and 12:30 p.m. Daily.