

DR. B. F. ARRINGTON,

SURGEON DENTIST



Office adjoining Tucker Hall.

20-tf

ALFRED WILLIAMS,

Bookseller and Stationer,

Second Door above Tucker's Store,

RALEIGH, N. C.

20-4t

MOSELEY'S

Confectionery,

RALEIGH N. C.,

Is the place to buy

French and Plain Candies,

Foreign and Domestic Fruits,

RAISINS, NUTS, etc.,

Fine Cigars, Smoking Tobacco, Chewing

Tobacco, Fine Cut Chewing Tobacco,

Fancy Goods, Childrens' Toys,

Cariages for the Little

Folks,

Croquet Set,

BASE BALLS AND BATS,

Marbles, Tops and Kites,

All at MOSELEY'S.

20-tf

JOHN C. PALMER,

DEALER IN

JEWELRY, SILVERWARE



Clocks & Repairing,
RALEIGH, N. C.

20-3t

**100 POUNDS OF ICE--
Only 25 Cents.**

Family ICE MACHINE for Farmers, Laboratories, &c. Producing 24 to 48 pounds a day, \$62 up. For co-operations, larger size, producing 200 to 1000 pounds an hour. Cost price of the ice about \$2.50 a ton.

Illustrated circulars free.

JULIUS BOZDOLL,
430 Walnut Street,
Philadelphia, Pa.

20-3t

\$5 TO \$20 PER DAY AT HOME.
Terms free. Address G. STINSON & CO., Portland, Maine. feb7-1y.

FOR SALE.

I will sell my valuable tract of WELL IMPROVED LAND, lying immediately on the Raleigh & Gaston Railroad, three miles south of Kittrell Springs, and containing 400 acres of very good land. Persons wishing to see for themselves will find me at home, or address

J. B. CRUDUP,
Kittrell Depot, N. C.
may28-6t.

W. H. CROW,

General Insurance Agent,

RALEIGH, N. C.

Represents the following Fire Companies:

Etna Insurance Company,

OF HARTFORD, CONN.,

Assets Jan. 1st, 1875, \$6,497,275.94

National Fire Insurance Co.,

OF HARTFORD, CONN.,

Assets Jan. 1st, 1875, \$43,353.74

Manhattan Fire Insurance Co.,

OF NEW YORK.

Assets Jan. 1st, 1875, \$700,885.36

—AND THE—

Etna Life Company

With assets January 1st, 1875,

\$20,657,603.56,

After paying Death Losses in North Caro-

lina over \$500,000 since 1866.

apr1-3m.

PORTABLE ENGINES.

The best in the world for Ginning Cotton, Grinding Corn, Sawing Lumber and general Farm or Plantation Purposes. Stationery Engines and Boilers of all sizes for all uses. Grist mills, Saw-mills, Shingle Machines and General Machinery. Satisfaction guaranteed. Send for Circulars and prices to the

CHILlicothe Foundry & Machine Works, Chillicothe, Ohio.

Please say in what paper you saw this.

W. E. ANDERSON, President. P. A. WILEY, Cashier.

CITIZENS'

NATIONAL BANK

OF RALEIGH, N. C.

Authorized Capital, . . . \$500,000

Deal in Government and other securities.

Jan9-tf.

JOHNSTONE JONES,

Attorney at Law,

RALEIGH, N. C.

feb13-6m.

A. CREECH,

Wholesale and Retail Dealer in

FOREIGN AND DOMESTIC DRY GOODS,

Silks, Alpacas, Bombazines, Cape Moretz, Blankets, Hosiery, Woolens,

Ticking, Sheeting,

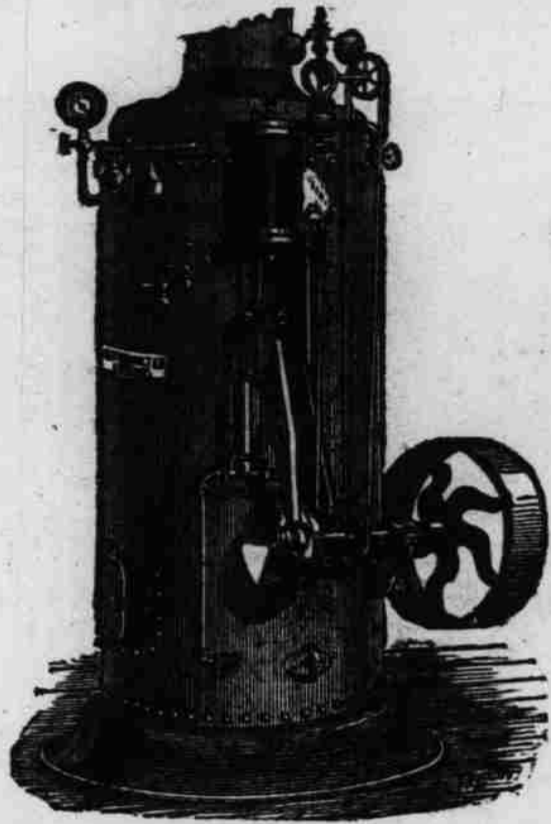
Boots, Shoes, Hats, Trunks, Valises, &c.,

Fayetteville St., Raleigh, N. C.

20-1t

NORTH CAROLINA

AGRICULTURAL HOUSE.



CEO. ALLEN & CO.,

NEWBERN, N. C.,

Engines from 3 to 15 Horse Power.

Cotton Girs,
Horse Powers,
Presses,
Reapers,
&c. &c., &c., &c., &c.

Plow Manufacturers.

Send for Catalogue and prices.

1-tf

T. J. WOOLBRIDGE,

FRENCH HAY, HANOVER CO., VA.,

IMPORTER AND BREEDER OF

Premium English

ESSEX PIGS.

Also Poultry from the finest Strains in this country, consisting of Light and Dark Brahmas, White Leghorns, English Black Breasted Red Game and Game Dominique, White Holland Turkeys, and Aylesbury Ducks.

All for sale on reasonable terms for Breeding or exhibition purposes.

EGGS FOR SALE IN SEASON.

Refers to Capt. R. T. Fulghum, Raleigh, N. C.; Wm. A. Faison, Duplin Co., N. C.; S. R. Street, Newborn, N. C.; W. J. Freeman, Augusta, Ga., all of whom have purchased stock of me.

To insure a reply, inclose postage stamp.

ESTABLISHED 1816.

CHAS. SIMON & SONS,

63 NORTH HOWARD ST., BALTIMORE, Md.

Dealers in

FOREIGN & DOMESTIC DRY GOODS

would call special attention to their splendid stock of Dress Goods, Linen Goods, Embroideries, Lace and Hosiery; the best assortment of Mourning Goods in the city.

SAMPLES SENT FREE!
All orders amounting to \$20.00 or over, will be sent free of freight charges by Express, but parties whose orders are not accompanied by the money and having their goods sent C. O. D., must pay in return of the money.

DAN'L A. SMITH. THOS. C. CRAFT.

DAN'L A. SMITH & CO.,

Wholesale and Retail Dealers in

PARLOR, DINING AND BED-ROOM

FURNITURE,

CARPETS, &c., &c., &c.

43 North Front St.,

WILMINGTON, N. C.

dec26-6m

NORTH CAROLINA

STATE LIFE

Insurance Company,

RALEIGH, N. C.

Capital, - \$200,000.00

At end of second year has issued nearly 1600 Policies. Prudent, economical and energetic management has made it a thoroughly successful corporation, and the leading Life Company in the State.

Issues every desirable form of Policy at as low rates as are consistent with prudence and safety. Imposes no useless restriction upon residence or travel. Policies non-forfeitable after two and three annual payments. Has five dollars of ASSETS for every dollar of LIABILITIES, with which to secure Policy-Holders.

ALL LOSSES PAID PROMPTLY.

Its entire assets are loaned and invested in NORTH CAROLINA, to foster and encourage Home Enterprises, and to protect and assist our own people.

With these facts before them, will the people of North Carolina continue to send out of the State annually, thousands upon thousands of dollars to build up Foreign Companies, when they can secure insurance equally reliable and on as good terms in their own

Home Company,

managed by some of the best and most prominent citizens of the State, and where every dollar of premium paid is invested in our own State, and among our own people?

O. H. PERRY,

Supervising Agent.

KEMP P. BATTLE, President.

F. H. CAMERON, Vice-President.

W. H. HICKS, Secretary and Treasurer.

DR. E. BURKE HAYWOOD, Med. Director.

20-tf

ESTABLISHED IN 1847.

R. B. ANDREWS & CO.,

27 FAYETTEVILLE STREET,

RALEIGH, N. C.,

Dealers in

Mens' and Boys' Clothing,

AND

GENTS' FURNISHING GOODS,

Hats, Caps, Trunks, Valises, Traveling

Bags, Umbrellas, &c.

Our Stock is the largest in the City, and comprises every grade of Goods, from the cheapest to the finest, and are adapted to the wants of all.

FINE DRESS SHIRTS A SPECIALTY

20-tf

THE FARQUHAR

SEPARATOR.



Lightest Draft, most durable, simplest, most economical, & cheapest in use. MA 2-1f