

# BREWSTER'S Cotton King!

The best Cook Stove in the Market.



Over Twelve Hundred sold in Raleigh,

And are giving satisfaction. Every one warranted. Special arrangements made with the Grange. Send for PRICE LIST, &c.

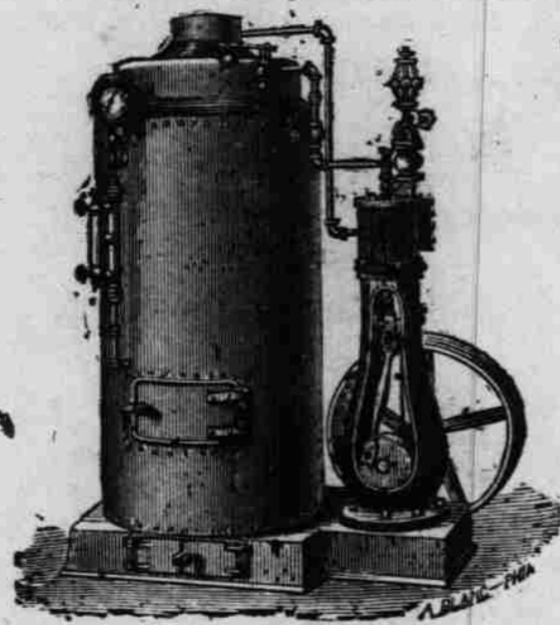
## TIN-WARE, LAMP GOODS, HARDWARE AND CUTLERY.

JOB WORK of all kinds done cheap and warranted.

J. C. BREWSTER,

4 Hargett Street, Raleigh, N. C.

1-tf



## THE HOPE ENGINE,

MANUFACTURED BY

McCallum, Wyckoff & Hope,

RALEIGH, N. C.

At the N. C. State Fair, 1874, the "Hope Engine" received the GOLD MEDAL as the best Steam Engine for general use, and the SILVER MEDAL as the best Vertical Engine.

We refer to the following parties, who have our HOPE ENGINE in use: Wm. G. Upchurch, of Williamson, Upchurch & Thomas, Raleigh, N. C.; Col. A. W. Shaffer, Raleigh, N. C.; Messrs. Farmer & Co., Goldsboro, N. C.; R. E. Best, Green county, N. C.; Messrs. Dunn, Reagan & Co., Plow Manufacturers, Forestville, N. C.; Messrs. Hammil and Weir, Brick Manufacturers, Raleigh, N. C.

We guarantee our HOPE ENGINE equal to the best made North, and we will not be undersold by the manufacturers of any FIRST CLASS ENGINE.

We manufacture

## THE CAROLINA COTTON GIN,

which we guarantee equal to the best Gin made. It was awarded the Silver Medal, as the best Gin made in the State, at the N. C. State Fair, 1874.

## OUR POWER COTTON PRESS

has no superior. We refer to A. F. Page, Cary, N. C., and A. T. Mial, Master of Raleigh Grange, No. 17, who have our POWER PRESS in use.

We manufacture the celebrated "SUNNY SOUTH" PLOW, and several others, which we will sell at very low figures.

We manufacture SAW MILLS, MILL GEARING, SHAFTING PULLEYS and MILL MACHINERY of every kind.

For full information and Price List, address

McCALLUM, WYCKOFF & HOPE, Raleigh, N. C.

1-tf

### CIRCULAR No. 26.]

Notice is hereby given that a year's supply of blanks for quarterly reports from Secretaries and Treasurers have been mailed to the address of the Secretary of each Subordinate Grange, required to make reports for quarter ending 30 inst., viz: Granges No. 1 to No. 512 inclusive.

When a change has been made in the office of Secretary and no report of the name of the new Secretary been sent to this office, the present incumbent must apply to his predecessor for these blanks, if not received within five days of the close of the present quarter, please make application to this office for them when another supply will be forwarded.

G. W. LAWRENCE, Secretary.

### Directory of the Board of Immigration, Statistics and Agriculture, of the State of North Carolina.

- Dr. W. H. Howerton, Secretary of State, President.
- George Little, Commissioner of Immigration, Secretary.
- Wm. C. Kerr, State Geologist.
- Wm. Johnson, Mecklenburg County.
- R. R. Bridges, Edgecombe "
- Dr. W. J. Hawkins, Warren "
- John D. Whitford, Craven "
- E. M. Holt, Alamance "
- E. R. Liles, Anson "
- S. H. Grey, Craven "
- Henry Nutt, New Hanover "
- John B. Grötter, Guilford "
- D. G. Worth, New Hanover "
- E. J. Aston, Buncombe "

### TO PATRONS OF HUSBANDRY.

5,000 Blanks Applications for Membership for sale, at 60c. per hundred. Address, R. T. FULGHUM, 1-tf P. O. Box 163, Raleigh, N. C.

## PIEDMONT

### AIR LINE RAILWAY.

RICHMOND & DANVILLE, RICHMOND & DANVILLE R. W., N. C. DIVISION, and NORTH WESTERN N. C. R. W.

### Condensed Time Table.

In Effect on and after Wednesday, June 23, 1875

#### GOING NORTH.

STATIONS.	MAIL.	EXPRESS.
Leave Charlotte	9.24 p m	5.55 a m
" Air-Line J'n	9.32 "	6.20 "
" Salisbury	11.58 "	8.24 "
" Greensboro	3.00 a m	10.55 "
" Danville	6.20 "	1.12 p m
" Dundee	6.20 "	1.20 "
" Burkville	11.35 "	6.07 "
Arrive at Richmond	2.22 p m	8.47 "

#### GOING SOUTH.

STATIONS.	MAIL.	EXPRESS.
Leave Richmond	1.38 p m	5.08 a m
" Burkville	4.52 "	8.35 "
" Dundee	10.33 "	1.14 p m
" Danville	10.39 "	1.17 "
" Greensboro	2.45 a m	3.58 "
" Salisbury	5.27 "	6.16 "
" Air-Line J'n	7.55 "	8.25 "
Arrive at Charlotte	8.03 "	8.33 "

#### GOING EAST. Going West.

STATIONS.	MAIL.	MAIL.
L. Greensb'ro	3.00 a m Ar.	2.00 a m
" Co. Shops	4.30 " L've	12.38 "
" Raleigh	8.33 " L've	8.10 p m
Aat G'ldsb'ro	11.30 a m L've	5.00 "

#### NORTH WESTERN N. C. R. R. (SALEM BRANCH.)

Leaves Greensboro	4.30 p m
Arrive at Salem	6.13 "
Leave Salem	8.40 a m
Arrive at Greensboro	10.33 "

Passenger train leaving Raleigh at 8.10 P. M. connects at Greensboro with the Northern bound train; making the quickest time to all Northern cities. Price of ticket same as via other routes.

Trains to and from points East of Greensboro connect at Greensboro with Mail Trains to or from points North or South.

Two Trains daily, both ways. On Sundays Lynchburg Accommodation leave Richmond at 9.00 A. M., arrive at Burkeville at 12.43 P. M. leave Burkeville at 4.35 A. M., arrive at Richmond 7.58.

No change of cars between Charlotte and Richmond, 282 miles.

For further information address S. E. ALLEN, Gen'l Ticket Agent, Greensboro, N. C. T. M. E. TALCOTT, Engineer & Gen'l Superintendent. July 1-tf

### SELLING AT GREATLY REDUCED PRICES.

Intending to enlarge my store, I offer my well-selected stock of Watches, Jewelry, Clocks, Silver and Silver-Plated Ware, &c., at Greatly Reduced Prices.

H. MAHLER. Wedding and Engagement Rings manufactured at short notice, and full satisfaction guaranteed. 1-1m

NOTICE is hereby given that the Cape Fear Council (P. of H.) will meet in Wilmington, on the (3rd) third Thursday in July next, (the 15th inst.,) at 8 o'clock P. M., in the Court House.

Arrangements have been made with the W. & W. R. R. to give return tickets for six (6) cents per mile. The C. C. R. R. and Boats on the Cape Fear River will pass members for one fare. C. W. McCLAMMY, Pres., C. F. Council P. of H. P. M. MOORE, Sec.