

Patrons of Husbandry.

Officers of the State Grange.

Master—COLUMBUS MILLS, Concord Cabarrus County.
Overseer—F. M. FITTS, Macon Depot, Warren County.
Lecturer—JOHN B. SMITH, Milton, Caswell County.
Steward—D. H. ARMSTRONG, Ashton, Pender County.
Asst Steward—HILL E. KING, Stump Sound, Onslow County.
Chaplain—REV. M. J. HUNT, Franklinton, Franklin County.
Treasurer—P. C. CARLTON, Statesville, Iredell County.
Secretary—G. W. LAWRENCE, Fayetteville, Cumberland County.
Gate Keeper—J. B. CLARK, Blowing Rock, Watauga County.
Vices—MRS. S. A. MILLS, Concord, Cabarrus County.
Pomona—MRS. A. S. FITTS, Oakville, Warren County.
Flora—MRS. P. C. CARLTON, Statesville, Iredell County.
Lady Asst Steward—MISS ELLA BOYD, Concord, Cabarrus County.

EXECUTIVE COMMITTEE:

GEOR. Z. FRENCH, Wilmington.
 AZARIAH GRAVES, Locust Hill, Caswell County.
 A. T. MIAL, Raleigh.

Proxy to represent North Carolina State Grange at meeting of next session of National Grange—JAMES F. JOHNSTON, Mecklenburg County.

Special Deputies.

NAME.	POST OFFICE.	COUNTY.
John B Smith	Milton	Caswell
T H Robinson	Concord	Cabarrus
P C Carlton	Statesville	Iredell
R W King	Wilson	Wilkes
W F Thomas	Greensboro	Guilford
J A Williams, Jr	Fayetteville	Cumberland
J C McMillan	Teachey's	Duplin
W T Shipp	Woodlawn	Gaston
Sam'l Rountree	Kinston	Lenoir
J M McKinnon	Shoe Heel	Robeson
E A Moye	Farmville	Pitt
H G Fladger	Lilesville	Anson
A J Ellington	Wentworth	Rock'gham
M A Bledsoe	Raleigh	Wake
G W Thompson	"	Wake
N B Whitfield	La Grange	Lenoir
N A Ramsey	Pittsboro	Chatham
H D Roberson	Hamilton	Martin
J A B Cooper	"	Martin
H B Estes	Townesville	Granville
S H Cannady	Wilton	Granville
W I Teague	New Salem	Randolph
J Knox Hughes	Cedar Grove	Orange
D A Montgomery	Company Shops	Atamance
C F R Kornegay	Dudley	Wayne
L P Erwin	Newton	Catawba
W B Meares	Linwood	Davidson
Jno R Logan	Shelby	Cleveland
Col H Portram	Green Hill	Rutherford
D F McIver	Egypt	Chatham
N A Penland	Asheville	Buncombe
N W Woodfin	"	Buncombe
Rev M J Hunt	Franklinton	Franklin
Peyton Dissett	Wilson	Wilson
J C Ellington	Clayton	Johnston
W C King	Beaufort	Carteret
Rev G W Newell	Cedar Rock	Franklin
Isaac L Williams	Democrat	Buncombe
Jas M Greenlee	Marion	McDowell
E A Poe	Lenoir	Caldwell
W B Clement	Jerusalem	Davie
F L Rodgers	Munroe	Union
M L Harris	Harrisburg	Cabarrus
Wm M Kincaid	Salisbury	Rowan
Dr J C Jacobs	Rich Square	North'pton
J S McElroy	Democrat	Buncombe
G D B Pritchard	Camden C H	Camden
Henry Harrison	Winton	Hertford
Rev Sam'l Leard	Rutherfordton	Rutherford
E T Kirby	Helton	Ashe
W B Clegg	Carthage	Moore
Buck Brown	Clarkton	Bladen
Hill E King	Stump Sound	Onslow
W W King	Danbury	Stokes
K Leggett	Palmyra	Halifax
D B Parker	Trinity College	Randolph
J B Clark	Blowing Rock	Watauga
F M Fitts	Oakville	Warren
N E Jenkins	Littleton	Halifax
Dr T W Ennett	Ashton	Pender
J T Reid	Old Fort	McDowell

JOHN L. BRIDGERS, Jr., of Tarboro, Edgecombe County, N. C., is appointed Attorney for the North Carolina State Grange, Patrons of Husbandry. COLUMBUS MILLS, Master. Concord, N. C., March 20, 1874.

DISTRICT OR COUNTY GRANGES.

Rules and Regulations for the Organization of District or County Granges.

[Extract from Constitution Nat. Grange.] ORGANIZATION—STATE GRANGE.

SECTION 2. There may be established District or County Granges in the fifth degree, not to exceed one in each county, composed of Masters or Past Masters of subordinate Granges and their wives who are Matrons, and such fourth degree members (not to exceed three) as may be elected thereto by the subordinate Granges represented therein. Dispensations for such District or County Grange, shall issue from the State Grange and under such regulations as the State Grange may adopt.

The North Carolina State Grange, at its second annual session by resolution authorized the Master and Secretary to adopt such rules and regulations for the organization of District or County Granges as they "may deem proper and just."

Acting under this authority, the Master and Secretary have adopted the following rules and regulations:

1st. Each Subordinate Grange within the jurisdiction of a County or District Grange shall be entitled to elect three fourth degree members (in good standing with their Grange,) one of whom shall be a Matron, who, with the Masters and Past Masters and their wives who are Matrons, shall be members of a County or District Grange.

2nd. Any Subordinate Grange not in good standing with the State Grange shall not be recognized by or be entitled to become a part of a County or District Grange.

3rd. The members of a County or District Grange may assemble at such time and place as may be agreed upon and proceed to their own organization by the election of officers (which are to be the same as in Subordinate Grange) The Master of this Grange must be a Master or Past Master of a Subordinate Grange. The officers so elected may be installed by any Master or Past Master present.

4th. After organization has been completed application must be made in due form (blanks for which will be furnished on application) to the Secretary of State Grange for a Dispensation. The application must be accompanied with the fee of one dollar for each Subordinate Grange composing said County or District Grange.

5th. County or District Granges may, at any time after organization, receive into their Grange any number of Subordinate Granges by reporting the name and number of such Granges and paying the fee to the Secretary of State Grange.

6th. Dispensations will be issued by the State Grange, under the seal of the State Grange signed by the Master and Secretary. Dispensations so granted will authorize the Master (or some other officer chosen by him) of said County or District Grange to confer the fifth degree upon all the members of said Grange.

7th. Granges so constituted will have charge of the business and educational interest of the Order in their counties or district, and shall encourage, strengthen and aid the Subordinate Granges represented therein. All business may be transacted in the fourth degree.

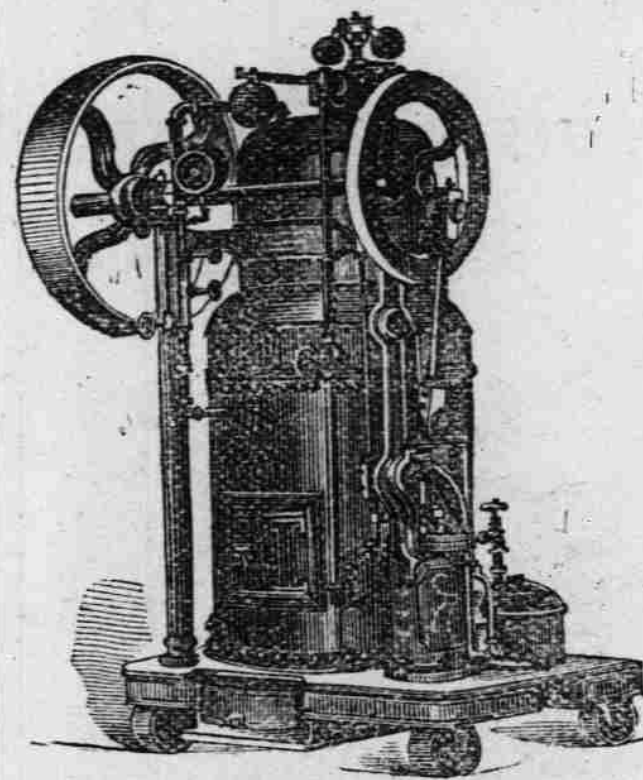
8th. County or District Granges may make such By-Laws, Rules and Regulations as they may consider necessary not in conflict with the Constitution and By-Laws of the National and State Granges.

COLUMBUS MILLS, Master.

G. W. LAWRENCE, Secretary.

GREAT REDUCTION IN THE PRICE OF PERUVIAN GUANO.

THE GUANO IS DRY AND FREE FROM LUMPS. For Scale of Prices and information, address VOSS BROTHERS, 4 S. Holliday St., Baltimore. 3-6m



STEAM POWER.

The "Shapley" Engine,

PATENTED FEBRUARY 4TH, 1874,

is offered to the public by the agents,

JULIUS LEWIS & CO.,

RALEIGH, N. C.,

DEALERS IN

Hardware, Sash, Doors and Blinds.

The Largest Stock in the State.

Please write them for circulars, terms, &c.

This Engine is endorsed by all the leading machinists in this country. Engines can be seen at our store.

It is Perfectly Free of Danger from Fire!

Sparks being drawn down through upright tubes and dropped in water—making it a desirable machine for agriculturists, printers, carpenters, or for any purposes requiring power of its capacity. Its simplicity allows it being run by any person of ordinary ability.

These Engines and Boilers have been thoroughly examined and inspected by the best mechanics, engineers and experts, all of whom pronounce it to be the best Portable Engine ever presented to the public.

Their small consumption of fuel, (being less than a quarter of a cord of wood daily for an eight horse power) and we call especial attention to the fact that these engines and boilers are considered so safe by Insurance Companies, that they do not increase their rates of insurance upon their introduction into stores, gin houses, and other buildings, making them desirable machines for ginning cotton, running mill-stones, elevating, heating, &c.; and they cannot fail to come into general use.

The materials used in the construction of these machines are in every respect first-class. No cast iron shafts or connections. Piston and valve rods, wrist pins, &c., are of the best cast steel. Steam and water gauges, try-cocks, oil-cups, &c., with governors, all as complete and perfectly made as possible. 2-1f

PORTABLE AND STATIONARY ENGINES,

SAW MILLS, & C.

OFFICE OF ERIE CITY-IRON WORKS,

ERIE, PA., January 6th, 1875.

DEAR SIR—We take pleasure in informing you that, encouraged by the favor with which our Machinery has been received throughout the South the past year, and in order to facilitate trade and meet the often expressed wishes of our friends and patrons, we have determined to open an office and warehouse for the sale of our manufactures in Charlotte, N. C., which will be known as the Charlotte branch of the Erie City Iron Works.

Mr. W. C. Morgan, who is so widely and favorably known throughout the South, will be in charge of the Charlotte Branch, and we propose to keep on hand there, Portable and Stationary Engines, Boilers and Circular Saw Mills of our own manufacture, also the best make of Corn Mills, Gins, Presses, Shingle Mills, and such other Machinery as the wants of the trade require.

The Charlotte House IS NOT AN AGENCY but BRANCH of OUR WORKS, owned and controlled by us, and any business done with us there is DONE WITH THE MANUFACTURERS DIRECT. We hope the establishment of this branch house will serve to bring us nearer together and avoid the vexatious delays that so often occur when doing business at so great a distance as we are from you.

For circulars, price-lists and any information wanted in our line, address

ERIE CITY IRON WORKS, Charlotte, N. C.

Trusting that our undertaking will meet with your approval and support, we remain, Very respectfully yours, ERIE CITY IRON WORKS.

PRATT'S ASTRAL OIL WILL NOT EXPLODE.

Now used in Nearly 600,000 Families.

Never an accident, directly or indirectly. Price reduced to **Forty Cents Per Gallon.**

BEWARE of SO-CALLED SAFETY OILS.

JULIUS LEWIS & CO., Sole Agents, Raleigh, N. C.

SASH, DOORS, BLINDS.

Prices lower than the lowest. Write for PRICE LIST. Our goods are thoroughly seasoned—NO SHRINKING Largest Stock in the State.

White Lead, Paints, Oils, &c.,

HARDWARE of every description at ROCK BOTTOM PRICES.

Agents for three of the best Stationary Steam Engines manufactured. Prices and all goods guaranteed. Address

JULIUS LEWIS & CO., Fisher Building, Raleigh, N. C.

20-1f