

Wilderness Camp For Boy Scouts

In the heart of the Kit Carson country in New Mexico is perhaps one of the most unique camps in America for young men. It is a camp truly national in scope for it is owned and operated by the National Council of the Boy Scouts of America to provide opportunities for Senior Scouts to get the benefits of a rugged and adventurous experience in the wilderness. Its campers hail from many parts of the United States.

The Philturn Rockymountain Scoutcamp, located just north of Cimarron, New Mexico comprises 35,857 acres of superb mountain wilderness, the gift in 1938 of Walter Phillips of Tulsa, Okla., who simply stipulated that it be put to practical use by Scouts whose experience, training, leadership and proper equipment would enable them to enjoy experiences like the pioneers who blazed the trails into the wilderness and helped to found this nation.

Already Scouts of fourteen states, including young men from New York, New Jersey and Pennsylvania, have made preliminary arrangements to camp on the wilderness preserve during its 1940 season which opens June 14 and ends on Sept. 1.

In accepting the land from Mr. Phillips who also provided \$50,000 for its development into a camp site, the Boy Scouts of America, through its President, Walter W. Head and its Chief Scout Executive, Dr. James E. West, told why the Movement undertook to provide a national camping area for older boys.

"In providing these opportunities for Scouts today to develop the rugged self-reliance and the ability to stand on their own feet and to take care of themselves and others, which were a fundamental part of the equipment of our pioneer forefathers, the potentialities of the Scout Program have been greatly extended. Increasingly from year to year this enrichment will be reflected in the quality of our Scouting, our camping and our leadership. The fundamental objectives of the Scout Program, character building and citizenship training, will be strengthened."

Chartered or Provisional Troops, qualified by experience, which are approved by their Local Council may have the privilege of camping at this high adventure wilderness camp, which in a sense, is serving as a national laboratory for testing adventure programs for older boys within the Movement.

Many different types of hikes and expeditions, varying in length from three days to twelve, are provided to meet the needs of different groups. Each camp site is arranged to provide water, tent space, cooking facilities and sanitary facilities to accommodate up to 32 Scouts and leaders. Each group is responsible for its own tentage, sleeping and cooking gear and is really on its own.

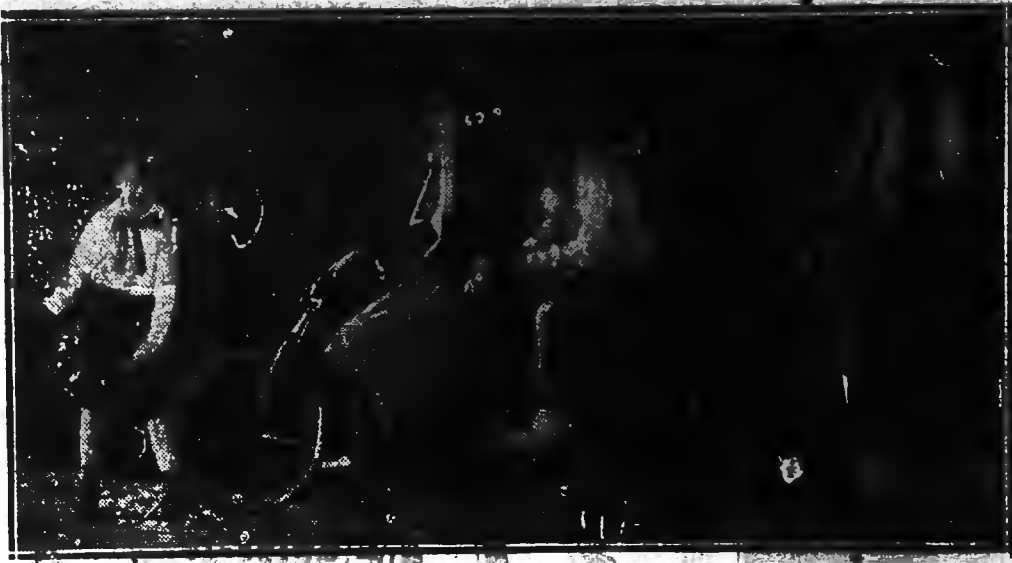
There's a three day back pack hike of approximately 15 miles, and a three day burro pack trip. An "overnight horseback hike" combines the use of horses and back packing and takes the Scout campers away from the base camp for two days and a night. A trip to the Carson National Forest involves a 75-mile journey over wonderful mountainous drives with an overnight camp in the forest. The attractions of this trip are Eagle Nest Lake, the Red River country, the pueblos at Mos, the Mbreo Valley and Cimarron Canyon. Six and twelve day exploration trips provide a more general experience than those offered by the shorter trips.

The Scouts' wilderness camp—known as Philturn Rockymountain Scoutcamp, a combination of the donor's name and the "good turn" of the Scouts—lies in the heart of a country that had a civilization long before the white man came. Ruins in these mountain fastnesses tell the story of how the cliff dwellers bored into shaly cliffs, placing their homes beyond the reach of their enemies' arrows. Pictographs which dot the canyon walls record the history of ancient Indian tribes.

Questions Answered By State College

Question: How can I get quick grazing for my cows?
Answer: Sudan grass or Pearl millet seeded broadcast at the rate of 25 to 30 pounds to the acre in a well-prepared fertile soil will give splendid grazing within six to eight weeks after planting. Seedlings made during the latter part of May or the first of June will be ready to graze around the middle of July, or about the time permanent pasture gets short and tough. Apply 100 to 200 pounds of a high grade readily available nitrogen fertilizer at seeding time. Allow one acre each cow.

Anniversary Pageant To Depict Scenes Of Gay Nineties



North Wilkesboro became a town at the outset of the "Gay Nineties" and the Anniversary pageant to be staged here on July 1, 2, 3, and 4th as a part of North Wilkesboro's 50th anniversary celebration will depict some of the "Gay Nineties" scenes such as the one shown above.

Dancers Of The Ballet



Adding to the gaiety of the historical pageant at the 50th anniversary celebration here July 1, 2, 3 and 4 will be such scenes as the one shown here entitled "Dancers Of The Ballet."

Mind Your Mind

A very tragic story was told me recently by a prominent business man. I cannot give you his name or town but many of you might remember reading about the case. He said that the wife of a friend of his lost her mind and became very difficult to control. The husband made application to have her committed to one of our State hospitals but was told that they had no room for her. She was so disturbed that she could not be left alone day or night. The man had a little money in the savings bank which he drew out and hired nurses to stay with her. When he had used all his money he came to this friend of his and borrowed some. When the borrowed money was all gone and being still unable to get his wife into the State hospital the man became distraught and shot himself.

As I heard the story I thought how much different it might have turned out if there had been a mental hygiene clinic in that town. The psychiatrist might have given the man advice on how best to take care of his wife until such a time as she could have been admitted to the hospital. More than that he could perhaps have steadied the man by sympathetic understanding and have given him help to keep from taking such a desperate way out.

But one thing that struck me about the story this business man told me was a remark he made at the close. He said—"But shooting himself did not solve the problem."

Pump Is 'Heart' Of Farm Water System

Select the right kind of pump and be sure the water supply is pure, then you have solved the most important problems in installing a farm water system, declares Howard M. Ellis, agricultural engineer of the State College Extension Service. "The pump is the heart of the system, but of course it needs pure water to serve the farm family safely," he said.

One of the simplest pumps is the hydraulic ram. This is a device for pumping water by means of water power. The conditions necessary for operating a ram are: A supply of water with a fall of at least two feet to the location of the ram, and sufficient fall below the ram to drain away the water used in its operation.

A shallow well pump may be used satisfactorily where ground water can be reached within 22 feet of the surface. For lifts between 22 and 100 feet, jet type pumps are becoming very popular. Deep well pumps set directly over the well may be used for lifts of more than 22 feet.

Continuing, Ellis said that an elevated tank should be a part of every farm water system, since it permits the flow of water to near-

quire a pump, and is therefore the most economical in most instances.

Questions Answered By State College

Question: When will Farm and Home Week be held at State College this year?

Answer: The 37th annual Farm and Home Week will be held on the State College campus July 29-August 2. Officials have planned to make this year's convention one of the most enjoyable ever held. Recreation, entertainment, and education will go hand in hand in a well-balanced program. For complete details on this event, write to Dan Paul, Secretary, Farm and Home Week, State College, Raleigh.

Question: What are the requirements of a good egg storage cellar?

Answer: An ideal egg storage cellar has a dirt floor so that more moisture is present. Likewise, there should be a ventilating window on one side near the top. Slatted platforms should be built on the ground so as to keep the eggs several inches off the floor. Market eggs at least twice weekly during hot weather.

A total of 6,397 drivers' licenses have been suspended in this state since 1935 for causes ranging from speed to illegal transportation of liquor.



50th ANNIVERSARY CELEBRATION JUNE 30 JULY 1-4

AND MERCHANTS BARGAIN FESTIVAL

A Celebration—Buying—and Saving Event

Prices Reduced Now

ON A BIG LINE OF

Philco and RCA Radios, Electrical Appliances, Batteries, Radio Tubes and Parts, Musical Instruments, Watches, Clocks, Flashlights. A complete line of Midget Radios in all colors and styles. Make our store your Radio headquarters.

WE MAINTAIN A MOST COMPLETE AND MODERN RADIO SERVICE DEPARTMENT.

We are making special prices on practically everything in stock which affords an unusual buying opportunity. You'll find it interesting to look over our lines, which include items for everyday use and many special articles for gift purposes. Come in while visiting our city . . . and here's a personal invitation to visit North Wilkesboro, extended by Cooper's Radio Sales and Service Co.

W. H. Cooper, Manager

RADIO Repairing BY EXPERTS

No matter what make, style or age, we can handle all radio repair work promptly and efficiently. Best materials used, yet low prices prevail.

PHILCO AND RCA RADIOS

In All Sizes And New Low Prices

COOPER'S

PHONE 134 RADIO SALES & SERVICE CO. PHONE 134

Next To Liberty Theatre

North Wilkesboro, N. C.

50th ANNIVERSARY CELEBRATION JUNE 30 JULY 1-4

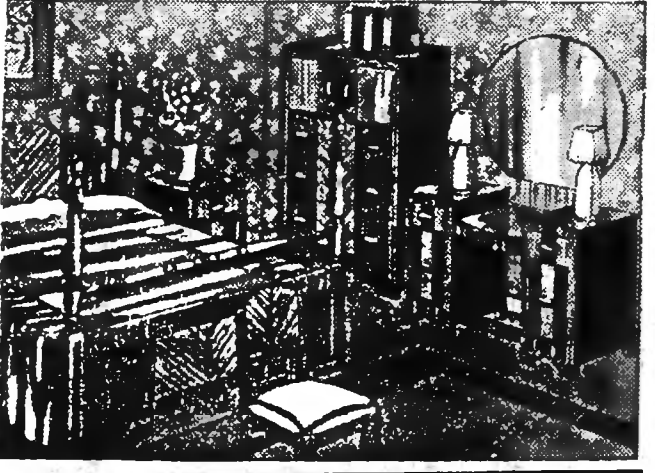
Summer Clearance Prices Make It Easy To Buy Now!

BE SURE
To See Our Line Of
SIMMONS
SPRINGS and MATTRESSES

Innerspring MATTRESS **\$12.50**
\$15.50 — \$19.75 — \$22.50
\$24.50 — \$29.50
\$39.50

Bed Room Suites
BEAUTIFUL 3-PIECE SUITES
\$39.50 up
CONSISTS OF BED, VANITY AND CHEST OF DRAWERS.
Made of Hardwood Throughout

Other Suites, In Modern, In Light and Dark Finishes..... **\$49.50 UP**

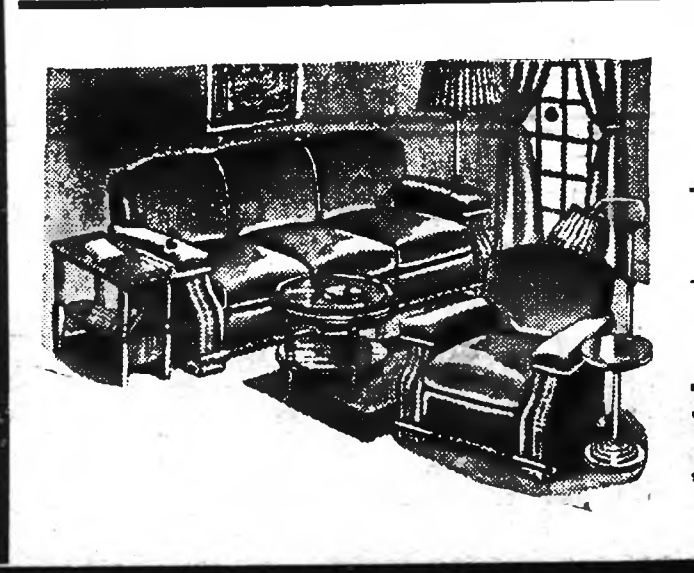


EXTRA SPECIAL!
LINOLEUM
9x12 RUG .. \$4.25
\$5.95 and \$7.50

E-Z-DO
Wardrobe
Very Special At
\$1.98

Dining Room Suites
Beautiful 9-Pc. Walnut Veneer Suites.—
Table, China, Buffet, 6 Chairs; Either
Walnut or Mahogany Finish—
\$79.50 to \$119.50

Also Breakfast and Dinette Suites As Low As..... **\$15.00**



Living Room Suites
Beautiful 3-Pc. Suites As Low As..... **\$45.00**

3-Pc. Genuine All Mohair Suites, As Low As..... **\$64.50**

EASY TERMS OR LIBERAL DISCOUNT FOR CASH.

See Our Line Of
Enterprise Ranges
Stewart-Warner Radios
Leonard Refrigerators

The Quality Is Right!
The Price Is Right!

Mark-Down Furniture Co.

Corner B and 10th St. A. T. Whittington, Mgr. North Wilkesboro, N. C.