

Checkers To Keep Watchful Eye On New Price Schedules In Effect Soon

Washington.—The office of price administration disclosed yesterday that highly skilled "shoppers"—professional price checkers—will be employed to help police new retail price schedules which become effective May 18.

Deputy Administrator Dexter M. Keener said selection of the "shoppers" has not been completed but Robert E. Sessions, new head of OPA's consumer division, revealed that personnel chosen will be trained by the bureau of labor statistics which long has kept a watchful eye on living costs.

Neither official would outline the specific duties of the "professionals" but it was indicated their work will consist of unannounced appearances at stores throughout the nation to "check up" on how well the price regulations are being observed.

Housewives are expected to undertake their own "policing" in buying retail articles but their work will be supplemented by the professional shopper. It was assumed that their principal task would be to inform storekeepers of minor violations with a view toward self-correction.

Meanwhile, Price Administrator Leon Henderson had had news for the nation's "essential" motorists, those eligible for new tires and tubes. Beginning today, vehicles in essential services will be unable to obtain new tires if recapped jobs will serve the purpose.

Furthermore Henderson disclosed that after June 1—one month hence—persons who abuse their present tires will be refused replacements—new ones or recaps. The order was delayed a month to permit "widespread publicity" of the requirement.

OPA said the actions were necessary because of the "severe rubber shortage." But there was a cheering word for east coast motorists who have been moodily contemplating impending gasoline rationing. Price and petroleum coordinator officials have virtually agreed that the hardships expected have been "greatly exaggerated."

Robert E. Allen, director of OPA's production division, said motorists probably will be able to obtain all the gasoline needed to meet "minimum requirements" and that he guessed the "worst hardships will be the inconveniences

of getting ration cards to buy it." OPA spokesman said probably six gallons of gas weekly will be available—rather than the original estimate than ran as low as two and one-half gallons—and that drivers who depend upon their automobiles to get to work probably will be allowed unlimited supplies.

Army To Tap 1-B Men In Some Areas

Washington.—The army, driving toward its goal of 3,600,000 men in the ranks by the end of the year, soon will tap a hitherto untouched source of manpower—Class 1-B draft registrants presently deferred because of minor physical defects.

This was disclosed yesterday shortly before President Roosevelt told his press conference he had reached no conclusion on whether the time had come to provide for registration and inductment of men from 18 to 20.

A small number of Class 1-B registrants will be inducted on an "experimental" basis. A selective service spokesman said local draft boards will be instructed to draw from this manpower reserve—consisting of some 800,000 men with flat feet, poor eyesight and other minor ailments—shortly after June 1.

Limited Duties The inductees would be assigned to limited duties according to each man's particular handicap. This would release for combat service able-bodied men now assigned to quartermaster depots, domestic guard duty, office jobs, and the like. The proposed inductions will be on an experimental basis, it was explained, because the army wants to determine whether it would be practical to utilize such manpower.

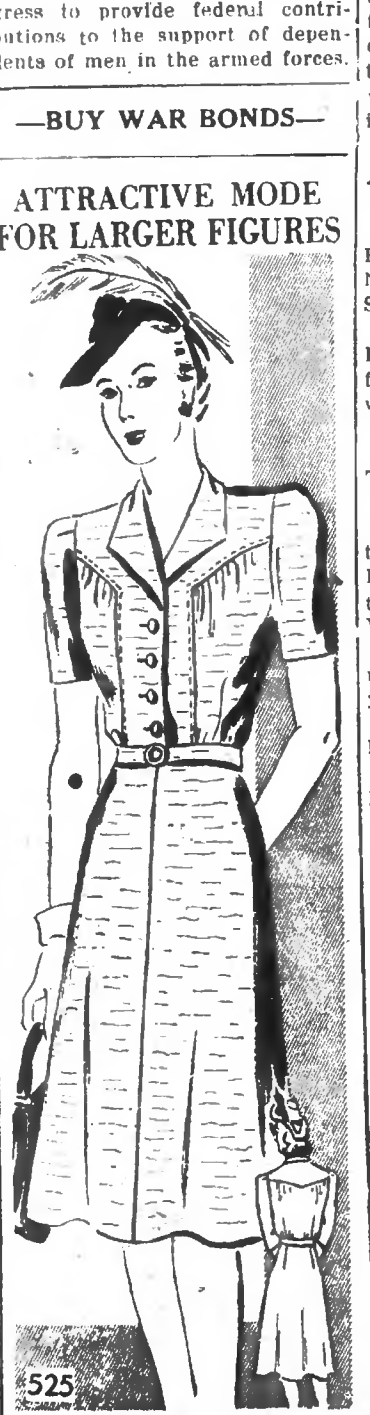
Officials said they could not estimate when larger numbers of 1-B men would be called if the experiment is successful. Inductees among Class 1-B men would be called according to their order numbers, but officials said they hoped a large percentage of the initial quotas can be filled from volunteers.

Initial calls for 1-B men will be sent out only by draft boards in the East Coast and in the Middle West, it was said. Plans to call men of such classification emphasized anew indications that the army's manpower problem is becoming more acute. Only last week-end, selective service headquarters revealed that some men with wholly financial dependents—excluding wives and children—might be inducted by fall.

It was said then that reserves of single, able-bodied men soon will be exhausted. Legislation is now being considered in Congress to provide federal contributions to the support of dependents of men in the armed forces.

—BUY WAR BONDS—

ATTRACTIVE MODE FOR LARGER FIGURES



Pattern 525 is cut in women's sizes 34, 36, 38, 40, 42, 44 and 46. Size 36 requires 3 1/2 yards 39 inch fabric. Send FIFTEEN CENTS (plus ONE CENT to cover cost of mailing) for this pattern. WRITE CLEARLY SIZE, NAME, ADDRESS AND STYLE NUMBER. Send orders to Pattern Pattern Department, 70 Park Avenue, New York.

Tanks, Guns Are Now Pouring In

Canberra, Australia.—Strong additional United States reinforcements have arrived in Australia, Prime Minister John Curtin announced today in a statement to the house of representatives.

He said the American troops were well equipped and included "important technical units." The prime minister also announced that he had created "the prime minister's war conference" consisting of himself, General Douglas MacArthur and such ministers and officers as he might summon to discuss highest strategical questions.

In his statement to the American reinforcements he said: "Strong additional United States reinforcements which are well equipped and include important technical units have arrived. The equipment position has materially improved."

"In addition to acceleration of local production of munitions, supplies of tanks and guns are arriving from overseas in increasing numbers and quantities of vital war equipment have been received from ships originally destined for the Dutch East Indies."

"Supplies of modern United States aircraft have made possible reinforcement of our northern air bases, resulting in constant raiding of Japanese bases in New Guinea, New Britain and Timor."

Prepare For Offensive Curtin asserted that Australia was preparing to take the offensive against the Japanese even in the face of an invasion threat which she regards as constant and undiminished. "Notwithstanding Japanese losses in aircraft and shipping at New Guinea and elsewhere, the commonwealth government regards an outright attack on Australia as a constant and undiminished danger," he said.

"Japanese aircraft losses in land operations at Darwin and in New Guinea and elsewhere exceed 150 bombers and fighters, with 100 damaged. "But still Japan is able almost at will to reinforce Timor and New Guinea areas with men and aircraft."

"Nor have we hitherto been able substantially to weaken the enemy's position in the regions occupied by him in the advance southward." The prime minister spoke twice, once in a long war statement to the house of representatives and also in a broadcast to England reaffirming Australia's loyalty to the empire.

Sees Turning Point Although he told the legislature that Australia must expect Japan to try her utmost to make this continent impotent as a base for the allied offensive, he predicted in his broadcast that "the turning point in the total conflict would be the allied blows dealt in the South Pacific."

A. H. Roberts Writes

Roaring River, May 2, 1942. Editor Journal-Patriot, North Wilkesboro, N. C. Sir: You may publish in the Public Pulse column of your paper the following if you deem it worthwhile to do so.

Respectfully, A. H. ROBERTS. To whom it may be of interest to read: Below is a clipping of poetry taken from a Camp Pontanzen, Brost, France, publication known there as "the Duckboard" dated Wednesday, June 25, 1919.

It sounds very odd for me to read now. How does it sound to you, reader? THEY ARE OURS No guns at Chateau Thierry Roar out at break of dawn. No aeroplane is hostile now They've quit their work and gone.

Their battle ships are conquered Their submarines are through. And if the Hun admits defeat Our little quarrel is through. Old Glory never waved in vain Not even with a Hun, And if they don't accept our terms Our fight has just begun.

They started out to conquer They fought the fight in vain, We've met the foe and they're ours If not we'll come again. —A. H. ROBERTS

About 99 percent of the cotton consumed by American mills in 1939-40 and 1940-41 consisted of native upland cotton ranging in staple length from shorter than 7-8 inch to about 1-2 inches.

Imports of rotenone, important garden insecticide, have been shut off from Malaya and the Netherlands East Indies, thus causing the War Production Board to curtail the use of this substance.

Farm Hints For The Homemaker

By RUTH CURRENT State Home Demonstration Agent This is the year for North Carolina farm families to: Pay off old debts and avoid making new ones; give more attention to quality in purchases, including a study of labels and materials; clean up the premises to prevent costly fires and disease epidemics; inspect the roof for leaks.

Any year is a good time for farm families to keep the calendar handy and refer to it often. It gives you something to shoot at, and a schedule to follow. Crossing off finished jobs is as much satisfaction.

Give eggs a break: There are hundreds of ways to use eggs. A homemaker is negligent when she allows her family to become tired of eggs at this season of the year when they are plentiful. Eggs are rich in iron and Vitamins A and C. They are also a good source of Vitamins B and D.

A guldepost for cooking eggs and cheese dishes is to use a low temperature. Don't boil eggs, simmer them. Long cooking and high temperatures are causes of curdled custards.

For foot comfort: Put a little piece of lamb's wool between the toes to prevent soft corns forming if your work requires long hours of standing. Try this when you're gardening: Take a good piece of wool-cloth scrap from an old suit or coat. Trace the outline of your shoe sole on it and then cut it out one-fourth inch smaller. Put this wool scrap smoothly in the bottom of your shoe and you will find it not only a soft cushion to stand on but also a protection from dampness and cold.

For thrifty meal planning, there is still no better beginning than enriched bread. If you buy flour and bread, buy enriched flour and bread. The cost may be somewhat higher, but for the sake of health one should pay the difference.

What does "enriched" flour look like? The kind made by adding vitamins and minerals looks and tastes like the white flour you have been used to. The kind made by special milling is slightly darker. You do not have to change your recipes when using "enriched" flour.

How is "enriched" flour made? In three ways: (1) By special methods of milling wheat, which save the recommended amounts of the vitamins and minerals; (2) By adding to plain white flour the recommended amounts of vitamins and minerals; (3) By combining these methods, saving part and adding the rest.

Handle gently such garments as girdles, foundation garments, garters and suspenders. Stretch them as little as possible when you wash them. Use mild soap and warm water and rinse many times to get all the soap out. Dry in a cool, well-ventilated place, away from heat and sunlight. Never dry a girdle or any other rubber garment on the radiator or over the stove.

Tears or worn places in garments made with rubber thread should be mended or darned as soon as possible, before the rent gets too big. When you darn try not to cut the rubber thread with your needle. And don't use a very fine thread, which may cut the rubber. Always allow a margin of 3-5 of an inch all around a darn or patch.

State Home Demonstration Agent Be sure to get rotenone or some good insecticide to fight bean beetles. Don't let them catch us! What can you do to help America win the war? Here are some suggestions: Fatten more pigs; grow more tomatoes; produce more poultry and eggs; grow more yellow soybeans; plant better home gardens; keep some bees; plant some cane seed; and improve the soil.

Don't worry. If you can't do anything about the problem, forget it. If you can, then get busy. It is very important to select good quality, comfortable shoes because you will be riding less and walking more. Good quality leather that will give good service and lower heels in women's daytime shoes, novelties for dress. Brush and polish your shoes regularly.

Use shoe trees to keep your shoes in shape. Have heels straightened and soles repaired. Avoid scuffing. More fruit in the diet would mean better health for many American families. Families on low incomes often suffer from lack of Vitamin C because they do not buy enough fruit and vegetables. If more families grew their own fruit they could afford a better diet.

Fruit is one of the most pleasant ways of getting minerals and vitamins. Fruits need sunshine. Strawberries are as rich in Vitamin C as citrus fruit. To keep your strawberry bed producing a good crop regularly, remember to plant a few new plants each spring.

What are canners going to do for sugar, metal jar tops and cans? The answer is: sugar, tin cans, jars and tops will be made available for home canning through the usual suppliers. That is, from your store or from any other place where you are used to getting them. Your local rationing board will announce how you are to get additional amounts of sugar for home canning.

If you should have a crop of fruit ready for canning some time this season and not as much sugar as you usually have, you can put up the fruit without the sugar and plan to sweeten it later as you use it. It may not hold its shape, or color, or flavor quite as well as if you had used sugar, but it will keep all right.

C. S. Prevette Again Heads Blowing Rock Chamber Commerce

Blowing Rock, April 20.—The annual reorganization meeting of the Blowing Rock Chamber of Commerce was held on Tuesday evening at the town hall. The report of the treasurer showed the financial standing of the organization to be very satisfactory.

C. S. Prevette was re-elected president and Dr. A. P. Kephart was elected vice-president. Hal C. Martin was re-elected secretary. The executive committee is composed of J. M. Burns, F. W. Rainey and Rev. Walter K. Keys.

Many farmers in the Millingport section of Stanley county will harvest from 30 to 40 bushels of wheat to the acre this year, if conditions remain favorable.

SERGEANT INGLE—Patrolmen Gets Two Liquor Cars

One Car With 100 Gallons And Another With 35 Gallons of Moonshine

Carlyle Ingle, state highway patrol sergeant, and Wilkes officers have taken two cars and 135 gallons of moonshine liquor during the past few days.

On Thursday afternoon Sergeant Ingle and A. C. Staley chased a 1931 model Ford several miles on highway 491 and county roads east of Wilkesboro before its driver stopped and made his escape on foot. In the car the officers found 335 gallons of sugar liquor.

Previously Sergeant Ingle and Deputy Homer Brookshirs caught a 1936 Ford on highway 18 after an exciting chase and in it they found 100 gallons of white liquor. The driver made his escape on foot.

Questions Answered By State College

QUESTION: When should chrysanthemum plants be divided? ANSWER: James G. Weaver, of N. C. State College says plants that are coming up from the roots of plants and bloomed last fall should be taken up at this time and divided. If this is done and the soil well prepared for re-setting, the gardener will be well repaid in choice blooms next fall. The young shoots should each have a good set of roots by the time they are 4 to 5 inches above the ground. The plants should be set in the prepared beds not closer than 12 inches. Some of the smaller flowered varieties may be placed farther apart because of their spreading habit of growth.

1,638 OF THEM—NYA Trainees Placed On Jobs

Raleigh.—A total of 1,638 North Carolina boys and girls received employment during the first quarter of 1942 as a result of training and work experience gained on projects of the National Youth Administration. State NYA Administrator John A. Lang announced today.

Of the large number placed in jobs as a result of NYA training, only 24 went into public employment. Ninety NYA boys volunteered for active duty and were accepted by the armed forces during the same period and 28 others entered through selective service. Few NYA youths are within the age-groups for military duty, Lang said in pointing out the small number drafted from NYA projects during the three-months' period.

A total of 452 young people went to jobs with firms having war contracts, while scores of others replaced men called into military service. Largest placements were recorded in textiles, with 216; shipbuilding, 178; agriculture, 222; construction, 92; wholesale and retail trade, 105; service industries, 229; domestic service, 150; and furniture, 49.

Placements during the quarter consisted of 1,062 boys and 576 girls. By months, placements were January, 501; February, 495; and March, 642.

The U. S. Employment Service is working on plans for handling the recruiting of women for farm work in areas where the usual labor supply may be short this year.

A large number of Avery county farmers are making plans this spring for the production of their first silage corn, reports J. E. Penland, assistant farm agent.

Want Ads

FOR RENT

FOR RENT: Five-room house, also farm with house if desired. Mrs. T. C. Ellledge, five miles out on highway 18. 5-14-2t-pd

FOR RENT—Five Room Heated Apartment. F. D. Forester, Telephone 51. 5-14-2t

FOR RENT: 5-room and bath, first floor apartment, a 3-room and bath upstairs apartment. Phone 297-R or inquire at Teague's Dry Cleaning plant. 5-7-1f

FOR RENT: 6-room apartment on D street, heat furnished. Call Mamie McNeil Emeason, Phone 411. 4-16-1f

OR RENT—Three rooms for light housekeeping. Mrs. Isaac Eller, Sr., at Wilkes Tie and Feed Store. 4-6-1f

FOR SALE

ONE GALLON KEM-TONE Wall Finish in paste form (cost \$2.98 per gal.) makes up to 1 1/2 gallons washable flat wall finish at cost to you per gallon—\$1.98. Carlton Hardware.

RAWLEIGH'S Beetle Dust, Pyrethry fly killer, livestock spray, dip and disinfectant. Complete line of products. W. W. Kyle, North Wilkesboro, route one, Fair-plains road. 5-18 (m)p

GOOD Dry Stove Wood and Kindling for sale near Cricket post office. Phone 39F15 or see O. H. Royal or Clyde Michael at Forest Furniture Company during noon hour. 5-11-2t-pd

GOOD USED CARS—Reconditioned and with good tires. Many bargains on hand. Graybeal Motor company, Claude Hutchens building on Gordon Avenue, Tom McNeill, manager. 2-5-1f

WANTED

WANTED: Hickory logs in 29, 58, 87 inch lengths, 9 inches and up in diameter. Hickory Fibre Company, Sawmills, N. C., 8 miles south of Lenoir. 5-28-9t

MISCELLANEOUS

JOE PALMER is now with us eight hours a day, six days a week for expert radio and refrigerator repair service, any make or model. Telephone 606 for quick service. Anderson Electric Co., Wilkesboro. 1-22-42

Register For

GASOLINE

Tuesday - Wednesday - Thursday

12th 13th 14th

Parts of five states in the Eastern area were recommended for exemption from the rationing program by Petroleum Coordinator Harold L. Ickes. If the War Production Board approves Ickes' proposal—and a spokesman declared WPB would—93 counties in Western New York, Pennsylvania, Maryland, Virginia and West Virginia will not be included in the rationing area.

FIVE CARDS

There are five types of ration cards and the kind to which a motorist is entitled depends upon the average mileage he drives daily in going to and from work.




Here is the gallonage for various ration cards covering the May 15 July 1 period:

- "A" card holders—Non-essential motorists, or those who drive less than six miles daily—21 gallons.
- "B-1" card holders—Those who drive from six to 10 miles daily—33 gallons.
- "B-2" card holders—Those driving from 10 to 14 miles daily—45 gallons.
- "B-3" card holders—Those who drive over 14 miles daily—57 gallons.
- "X" card holders — "Essential" workers who cannot accurately predict their daily mileage, like doctors and nurses who may be called over a wide area—unlimited gasoline for their essential uses.

AS HE PLEASURES

A motorist may use his allowance of gasoline as he pleases, adhering to the average weekly figure or spending the entire amount for the 47-day period within a few days of vacationing. However, dealers may not be able to supply a motorist with his full allotment at one time. OPA officials said that a permanent rationing plan for the 17 Eastern states will go into effect July 1.

Independent Oil Co. of N. C.

Forester's Nu-Way Service

DEALERS

NORTH WILKESBORO and TAYLORSVILLE

1928 Millions of Dollars Saved Motorists 1942