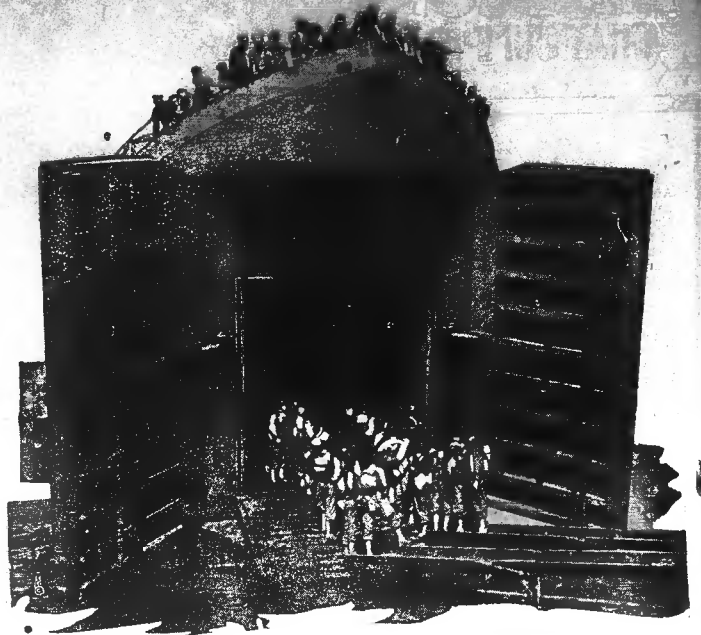


IMPORTANT MESSAGE

To All Wilkes County **SAWMILL MEN**



•
SAWMILL
MEN
HAVE AN
IMPORTANT
JOB TO
DO!

•
PRIORITY
REFERRAL
PLAN
WILL
PROTECT
YOUR
INTERESTS

PRIORITY Referral Plan IS NOW IN ACTION!

SAWMILL MEN, DO YOU NEED WORKERS? IF SO, SEE YOUR LOCAL EMPLOYMENT OFFICE IMMEDIATELY!

OR THE WORKERS YOU NEED MAY BE REFERRED TO OTHER WORK ESSENTIAL TO THE WAR EFFORT.

Take advantage of the Priority Referral Plan which requires all male workers to be hired thru the U. S. E. S. That office will help you get the manpower necessary to reach maximum production—if you act now!

Contact your local U. S. Employment Office, located at 309 Ninth Street.

THIS IS URGENT!

Lumber rates one of the highest priorities, and it is our duty to keep up production.

Timber from farm trees is being rushed to every battle front for this year's great offensives. Billions of board feet of lumber are required for crates, boxes, and containers to package and deliver food, weapons, munitions, and life-saving blood plasma. Transport carriers — box cars, trucks, planes, gliders, ships, and barges—as well as ammunition and many weapons themselves require wood in their manufacture.

Every blow of the ax struck in your forest today is a blow at the enemy. Cut your mature trees for veneer logs or sawlogs; thin crowded young stands for future growth.

THIS ADVERTISEMENT IS SPONSORED BY THE FOLLOWING WILKES COUNTY FIRMS:

Presley E. Brown
Lumber Company

Church & Hayes
Lumber Company

Oakboro Lumber Co.

Wilkesboro Mfg. Co.
Lumber and Building Material

Pat M. Brown
Lumber Company

Triplett Lumber Co.