

### SOCIETY

#### Miss Mathis Becomes Bride of Mr. Himes

Hampton, Va.—The Hampton Baptist church was the setting Saturday, Dec. 21st, at 5 in the afternoon, for the marriage of

Miss America Eveline Mathis, daughter of Mr. and Mrs. Robert G. Mathis of North Wilkesboro, N. C., and Addison Himes of this city, son of Lawrence Himes of Rochester, N. Y., and the late Mrs. Himes of Tannersville, Pa.

The Rev. John Garber officiated before a background of palms, white carnations, and lighted tapers, using the double ring

ceremony. William Enderbrook of Hilton Village, soloist, sang "I Love You Truly" and "Because."

The bride, who was given in marriage by her father, wore a bridal gown of white satin fashioned with sweetheart neckline and ending in a long train. Her veil of illusion was arranged with orange blossoms. She wore a single strand of pearls, and carried an arm bouquet of white carnations.

Miss Bertha Langley of Rocky Mount, N. C., maid of honor and only attendant, wore a pale blue satin and net gown with matching veil. Her flowers were a corsage of pink carnations and she wore a single strand of pearls.

Edward Lake of Wythe Park-way was best man, and the

groomsmen were Clifford Loveland and Henry Partin. Mrs. Mathis, mother of the bride, wore a black gabardine suit and her flowers were a corsage of red roses.

After a wedding trip through Virginia and North Carolina, Mr. and Mrs. Himes are making their home at 2306 Parish Ave. The bride wore for traveling a black wool dress with black accessories, and her flowers were a corsage of white carnations.

#### Wilabri Club Met With Mrs. Garwood

Mrs. Albert Garwood was hostess to the members of the Wilabri bridge club and a few extra guests at her home in Wilkesboro Thursday evening. Bridge was played at three tables, and was followed by a salad course. Prizes for the evening went to Miss Irene Culler for top score within the club, and to Mrs. Charles B. Hulcher for top score among the visitors. Mrs. Edison Norman was the winner of the bingo prize. The Valentine motif was carried out in the table appointments and the refreshments.

#### Mrs. Ray Barnes Entertains Her Club

The members of the Sans Souci club were entertained by Mrs. Ray Barnes at her home on E Street Thursday evening. Mrs. Maurice Walsh won the prize for high score in the game, which was played at two tables, and Mrs. R. H. Shell the second high score award. The tallies, and the refreshments served at the conclusion of play, were suggestive of the Valentine season.

#### CARD OF THANKS

We use this means to express sincere thanks to friends and neighbors for kindness and sympathy during the illness and death of our mother and grandmother, Martha Matilda Owens. We especially wish to thank the people for the beautiful flowers.

THE OWENS FAMILY.

Potato acreage goals for 1947 have been revised downward by the U. S. Department of Agriculture, resulting in a reduction of 152,800 acres.

#### NOTICE OF SALE

North Carolina, Wilkes County.

Under and by virtue of an order of the Superior Court of Wilkes county, made in the special proceeding entitled Lela Bishop Nichols and husband, Millard Nichols; Toya Bishop Dancy and husband, Charlie Dancy; Rollan Bishop, single; vs. R. T. Lovette, widower; Sally Lovette Hayes and husband, Ruel Hayes; Edna Lovette Hayes and husband, Richard Hayes; Mona Lovette Eller and husband, Russell Eller; R. T. Lovette, Jr., and wife, Mrs. R. T. Lovette, Jr.; Gaynell Lovette, single; Wilamina Lovette Stuart and husband, Ralph Stuart; Herman Lovette, minor; and Madeline Pearl Lovette, minor, the same being No. \_\_\_\_\_ upon the special proceeding docket of said court, the undersigned commissioner will, on the 3rd day of March, 1947, at 12:00 Noon, at the courthouse door in Wilkesboro, North Carolina, offer for sale to the highest bidder for cash that certain tract of land lying and being in Reddies River township, Wilkes county, North Carolina, and bounded as follows:

Beginning at a white oak and chestnut in the W. M. Roberts line running north 85 deg. east 120 poles to a chestnut and Spanish oak; then south 134 poles to a stake; thence west 135 poles to a stake in the said Roberts line; thence north with the Roberts line to the beginning, containing 100 acres, more or less, and known as the land John Bishop, the father of John R. Bishop, owned at his death.

This 30th day of January, 1947. CLYDE HAYES, Commissioner

2-24-47-M

#### Lions Improve In Conference Stand

Barium Springs, Feb. 3.—There is a lot of honor in heading up a conference, but there is not much comfort in it because everybody picks on the leader and during the past week the undefeated teams in both conferences have almost reached the vanishing point.

In the South Piedmont the Albemarle girls still lead with a perfect record although Concord held them to 19 points in their game last Friday. The Children's Home girls fell by the wayside due to a 1 point loss to Barium Springs. In the boys' division the Children's Home is the only undefeated team, with Kannapolis so close on their heels that the two games in which these two teams meet will probably decide the championship. There were not many close decisions in the South Piedmont. The Albemarle girls defeated Kannapolis and the Albemarle boys lost to Kannapolis. The Children's Home girls lost to Barium 19-20; the boys won 24-23. Concord girls won from Monroe; the boys lost, the margin was 15 points and Concord had just defeated Kannapolis! Thomasville girls won from Lexington 22-18; the Thomasville boys lost 33-35. Those Davidson County neighbors play for keeps. Spencer lost a double-header to Mooresville; the girls 32-22 and the boys 52-19. Later on in the week Albemarle won a double-header from Concord; Barium won a double-header from Statesville; Children's Home took a double-header from Thomasville; the Lexington girls lost to Mills Home and the boys won. The Spencer girls won from North Wilkesboro; the boys lost.

Ten games will be played this week, the Children's Home going to Lexington for one of the top games of the week and Kannapolis coming to Barium for another one that promises to be close.

#### Girls Standing

Team	W.	L.
Albemarle	7	0
Barium	7	1
Children's Home	4	1
Concord	6	3
Mills Home	4	2
Mooresville	4	2
Statesville	4	4
Thomasville	2	4
Spencer	2	5
Asheboro	1	3
Monroe	1	4
Lexington	1	5
Kannapolis	1	6
North Wilkesboro	0	4

#### Boys Standing

Team	W.	L.
Children's Home	5	0
Kannapolis	6	1
Albemarle	5	2
Lexington	4	2
Spencer	4	3
Concord	5	4
Barium	4	4
Mooresville	3	3
Statesville	3	5
Thomasville	2	4
Asheboro	1	3
North Wilkesboro	1	3
Monroe	1	4
Mills Home	0	6

#### Take The High Side, Ma!

Sloping pig pens have reduced the mortality rate of piglets from one out of four to one out of 30. The sow inadvertently has a tendency to crush her offspring by lying on them—and the floorboards, slanted to 1 1-2 inches to the foot, enable the piglets to drift to the low side, while mama remains firmly parked on the high side.

#### EXECUTOR'S NOTICE

Having qualified as executor of the estate of Mrs. Sara A. Blevins, deceased, late of Wilkes county, North Carolina, this is to notify all persons having claims against the estate of said deceased to exhibit them to the undersigned at Wilkesboro, N. C., on or before the 29th day of January, 1948, or this notice will be plead in bar of their recovery. All persons indebted to said estate will please make immediate payment.

This 29th day of January, 1947. N. O. SMOAK, Executor of Mrs. Sara A. Blevins, deceased.

#### NOTICE SERVING MESSAGES BY PUBLICATION

North Carolina, Wilkes County. In the Superior Court of Dolores Hall Townsend vs. Loyd Townsend

The defendant, Loyd Townsend, will take notice that an action entitled as above has been commenced in the Superior Court of Wilkes county, North Carolina, to secure an absolute divorce on ground of two (2) years separation; and the said defendant will further take notice that he is required to appear at the office of the Clerk of the Superior Court of said county in the courthouse in Wilkesboro, N. C., within thirty (30) days after the 7th day of January, 1947, and answer or demur to the complaint in said action, or the plaintiff will apply to the court for the relief demanded in said complaint.

This 30th day of January, 1947. C. G. HAYES, Clerk Superior Court of Wilkes County, N. C. 2-24-47-M

#### Mountain View And Millers Creek to Play

Mountain View All-Stars will play Millers Creek all Stars in the Mountain View gym Friday night, Feb. 14th, at 7:30. A good game is expected.

play Millers Creek all Stars in the Mountain View gym Friday night, Feb. 14th, at 7:30. A good game is expected.

#### A JEWEL BOX

# Diamond

### LOVE'S OWN TRUE VALENTINE



4 Ways to Pay: 1. Lay-Away. 2. Charge Account. 3. Weekly Terms. 4. Buy For Cash.

## THE Jewel Box

YOUR FRIENDLY CREDIT JEWELERS INC.

Next Door to Liberty Theatre

Have You Made a Check At

## WALLACE RADIO SERVICE

For Electrical Supplies and Appliances?

- Fluorescent Desk Lamps
- Hospital Type Heating Pads
- Electrical Heaters
- Door Chimes
- Hot Plates
- Toasters
- Radios and Record Changers

And Many Other Items

RECORDS MADE OF YOUR VOICE OR MUSIC WHILE YOU WAIT  
Records — 10-Inch Size

## BUILD YOUR OWN RADIO

We Have Meissner 6-Tube AC-DC Kits Broadcast and Short Wave

YOUR FACTORY AUTHORIZED

Philco and Motorola Service Dealer

## WALLACE RADIO SERVICE

"SERVICE THAT SPEAKS FOR ITSELF"

Telephone 245

9th Street

*How Do YOUR SOCKS SIZE UP?*

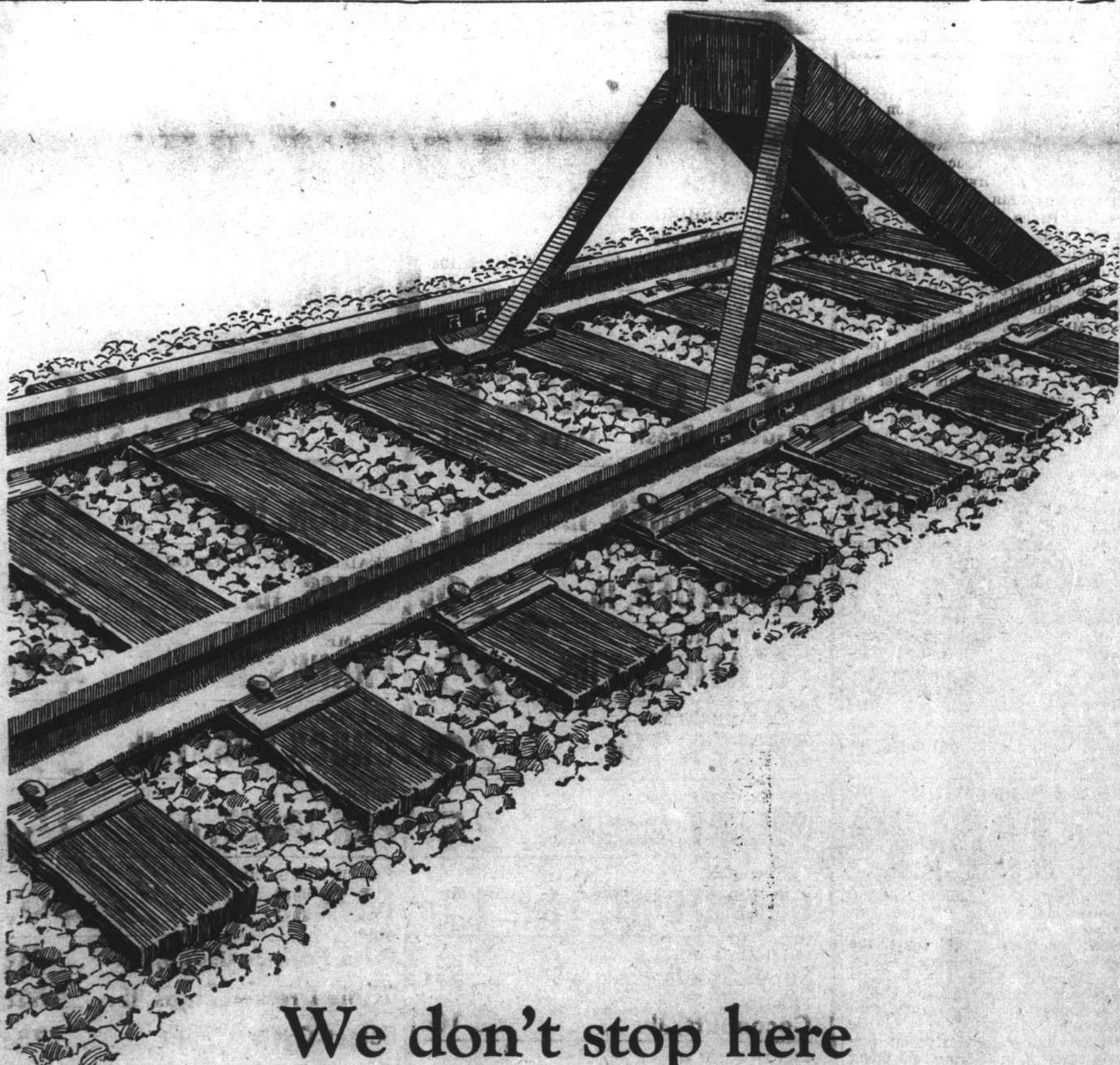
**MEMO**

If you're a black shoe man, your best bet is black or navy; or colors that harmonize with suit or accessories. Wear your bright socks with brown or sport shoes.

If you're built with heavy underpinnings, vertical stripes and ribs will help slenderize your ankles. Build your thin ankles up with plaids, diamonds. White and white trimmed sport shoes call for light pastel socks.

*Marlow's Men's Shop*

**MARLOW'S MEN'S SHOP**  
NEW AND CORRECT MEN'S WEAR  
NORTH WILKESBORO, N. C.  
MICHAELS - STERN Value First CLOTHES



## We don't stop here

End of the line?

For cars, yes. But not for the Southern Railway System.

We keep right on...serving the South in many ways beyond providing dependable, economical, all-weather transportation.

Our tax dollars help to build and maintain your public schools, police and fire departments and other governmental services and facilities... even airports, highways and waterways.

Our millions of dollars in "better-than-average"

wages... paid to our 50,000 employees... ring cash registers and swell bank accounts in every community we serve.

And our policy of buying all the materials and supplies we can in the South is a boon to local business, industry and agriculture.

Nor do we stop here... we go on and on. For we are your enthusiastic partner in the building of an even greater, more prosperous South.

*Emmet E. Norris*

President

## SOUTHERN RAILWAY SYSTEM

