

THE JOURNAL-PATRIOT

# SPORTS



Dwight Nichols, Sports Editor

## Ramblers To Play Boonville Tonight

Wilkesboro high school football team will face their strongest foe to date this season when they play Boonville under the lights at Memorial Park tonight. Gates to the park will open an hour before the game, which should draw a large crowd to see two fast and evenly matched teams in action. Kickoff time will be eight p. m.

Wilkesboro is undefeated to date, having won over Granite Falls, Cleveland, Jonesville and Mocksville by lopsided scores. Tonight will be their big test against Boonville's state Class B champions of last year.

Joe Kershalla scored 11 touchdowns and five points after touchdowns—a total of 71 points—for West Liberty Teachers College in a single game played in 1933.

Support the Y. M. C. A.

## Lions Will Play Thomasville There

Local High School Team Will Face Strong Team On Friday Night

North Wilkesboro's Mountain Lions will be in for a tough night Friday when they play Thomasville there at eight p. m.

Coach Howard Bowers has been working the Lions hard in preparation for Friday night's conference tilt and North Wilkesboro hopes to add one more game in the victory column. But Thomasville has been exceedingly tough opposition in their every game this season and this week they defeated the strong Barium Springs eleven in a game postponed from Friday. Thomasville has been beaten only by Spencer.

North Wilkesboro lost a heart breaker by the breaks here Friday night to Boone when a last minute pass was intercepted and run for a touchdown by Boone to break a 6 to 6 tie. North Wil-

kesboro had tied the game up when Rousseau took a pass from Hudson and raced 60 yards, but efforts to break the tie backfired in favor of Boone.

North Wilkesboro will play away two more weeks, with Elkin on October 24 and at Statesville October 31, before meeting China Grove here November 7 and Wilkesboro here November 14.

## Football Pickers Have a Bad Week

Trying to pick winners of 25 top games of the week is no easy task, as your sports editor and Frank Walker know after last week's try. In 27 games there were two ties, leaving exactly 25 on which to figure percentage.

Walker led last week with 17 right and eight wrong for a percentage of 68, while Nichols picked only 16 for a percentage of 64. This week we are at it again, but this time we include exactly 50 games, beginning with local high school contests and including all top games on the national schedule.

Both Agree On  
North Wilkesboro over Thomasville, Wilkesboro over Boonville, Carolina over William and Mary, Duke over Maryland, Wake Forest over George Washington, State over Florida, Catawba over Appalachian, Alabama over Tennessee, Texas over Arkansas, Mississippi over Tulane, Vanderbilt over Kentucky, Virginia over Washington and Lee, Furman over Citadel, Georgia Tech over Auburn, V. M. I. over Richmond, Missouri over Kansas State, Army over V. P. I., Purdue over Boston University, Navy over Cornell, Holy Cross over Harvard, West Virginia over N. Y. U., Notre Dame over Nebraska, Pennsylvania over Columbia, Colgate over Princeton, Illinois over Minnesota, Indiana over Pittsburgh, Michigan over Northwestern, Oklahoma over Kansas, Rice over Southern Methodist, Baylor over Texas Tech, California over Washington State, Southern California over Oregon State, U. C. L. A. over Stanford, Yale over

Wisconsin, Davidson over Hampden-Sydney, Washington over Oregon, Cincinnati over Oklahoma City, Rutgers over Fordham, Mississippi state over Duquesne, Villanova over Detroit, Hardin Simmons over New Mexico, Miami over Rollins.

Nichols Walker  
Boston College ..... L. S. U.  
Dartmouth ..... Brown  
Georgia ..... Okla. A. & M.  
T. C. U. .... Texas A. & M.  
Georgetown ..... Tulsa  
Iowa ..... Ohio State  
Penn. State ..... Syracuse

## Children's Home Leads Conference

Barium Springs, Oct. 13.—If the citizens in and around Chapel Hill have not used all of the aspirin and other headache remedies there might be a ready sale for the balance in and around Concord. As we predicted last week, the Mooresville-Concord game was a thriller, and that up and coming Mooresville team tumbled Concord 6-0. Concord started out as one of the strongest teams in the conference and suffered a one-point defeat at the hand of Children's Home, then romped on Statesville, and now suffered this loss to Mooresville which shoves them rather far down in the standings. Only two other South Piedmont games were played. The Children's Home had a light scrimmage with Asheboro, defeating them 32-0. Albemarle in their first conference game of the season barely squeezed through for a victory over Monroe, which means either that Monroe is much stronger than was predicted or else Albemarle is living too much in the past. The Barium-Thomasville game was rained out and Thomasville won Monday 7-6. The only team in the conference that does not need a nerve tonic seems to be the Children's Home. They have just one hard game ahead of them—Albemarle—to be played in Winston on Friday night. If the Children's Home takes that one they can commence preparing their banquet speeches because they should not be bothered too much by the rest of the schedule. Asheboro goes to Kannapolis this coming week-end and that should be an interesting game as it will enable one or the other to get out of the cellar. Mooresville goes to Statesville and from where we sit it does not look as though Statesville will stand much chance of getting out of the cellar which she occupies with Asheboro and Kannapolis at this moment.

Monroe goes to Concord. Concord should win this just like Carolina should have beaten Wake Forest, but you never can tell. Monroe must have some thing: she defeated North Wilkesboro earlier in the season and that is no light undertaking. North Wilkesboro will be at Thomasville, and unless Thomasville has improved, North Wilkesboro should take this. Lexington comes to Barium for Barium's Home-Coming Day. Barium is a tough team to beat on Home-Coming, but Lexington has done it and she may do it again this year. In comparative scores Lexington is much stronger. Every team in the South Piedmont will be in action against a conference opponent except Spencer. There were four non-conference games played this week, with Lexington defeating High Point 7-0; Statesville losing to Newton 6-0; and Kannapolis losing to Salisbury 26-0; North Wilkesboro losing to Boone 12-6.

South Piedmont Standings

|                  | W. | L. | T. |
|------------------|----|----|----|
| Children's Home  | 4  | 0  | 0  |
| Albemarle        | 1  | 0  | 0  |
| Spencer          | 3  | 0  | 1  |
| Lexington        | 2  | 1  | 0  |
| Mooresville      | 2  | 1  | 0  |
| Barium           | 1  | 1  | 0  |
| North Wilkesboro | 1  | 1  | 1  |
| Thomasville      | 1  | 1  | 0  |
| Concord          | 1  | 2  | 0  |
| Monroe           | 1  | 2  | 0  |
| Asheboro         | 0  | 4  | 0  |
| Kannapolis       | 0  | 2  | 0  |
| Statesville      | 0  | 2  | 0  |

ANDERSON'S PLUMBER

TO MAKE IT PLAIN LET US EXPLAIN YOUR SATISFACTION IS OUR GAIN!



ANDERSON Electric Co. MYERS WATER SYSTEMS Phone 630-WILKESBORO, N. C.

You'll Find Plenty of Furniture Values At ...

# Forester's



Three and Four-Piece

Livingroom SUITES

\$69.50

To \$195.00

4-pc. Massive Suites, covered in mohair or velour; Sofa, Tilt-Back Chair, Club Chair and Ottoman. Priced to sell at only \$195.00

3-pc. Suites covered in tapestry \$ 69.50

3-pc. Suites covered in velour \$ 79.50

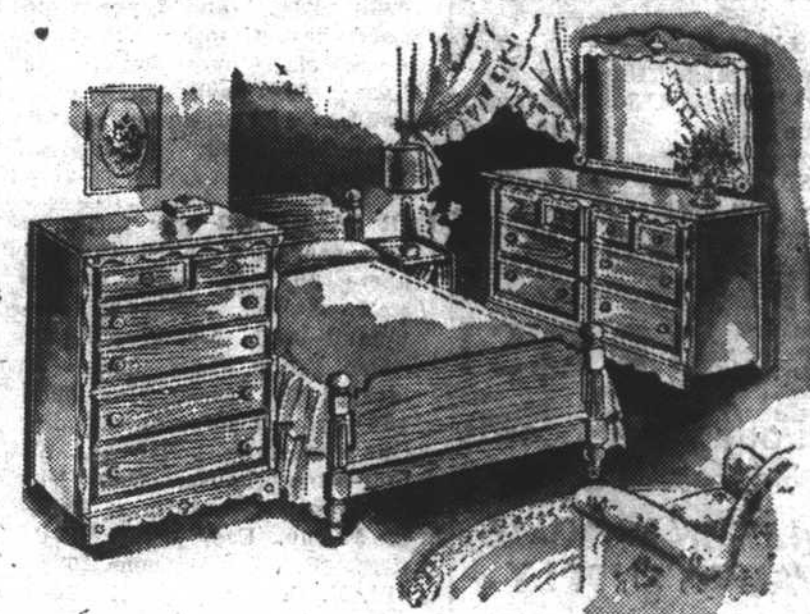
3-pc. Maple Suites, covered in duran plastic \$120.00

## Four-Piece Bedroom SUITES

A Suite For Every Size Room

\$65.00

To \$279.00



Large 4-pc. Suite in prima vera (blonde), vanity and nice bench, priced \$279.00

4-pc. Modern Suites in walnut or prima vera—panel bed, chest, vanity and bench. Only \$85.00

Other Suites priced from \$65.00 to \$250.00

## Utility Cabinets

Black and White and Red and White

\$24.50

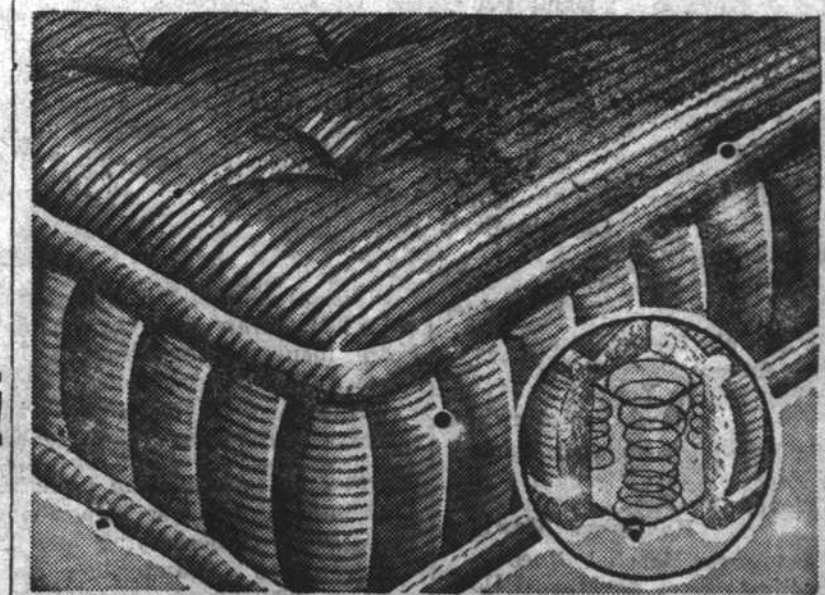
See These!

## A Forester Special!

Heavy coil springs, full size Iron Bed; 55-lb. mattress. All for—

\$42.50

## "Sleep-Well" Innerspring Mattress



Were \$32.50; Reduced to \$28.50

## NEW IDEA KITCHEN CABINETS



Metal flour bin and metal meal chest. In color combinations of white and black and red and white

\$49.50

See These Today!

## BREAKFASTROOM— SUITES \$39.50

A big Forester value!

## FINE G. I.— BLANKETS \$3.35

Excellent quality. Size 66x90

## ARVIN ELECTRIC— IRONS \$8.75

With fabric selective control

## Trunks! Trunks! Trunks!

Just received a shipment of Trunks. Three sizes to choose from.

\$15.00 - \$19.50 - \$26.00

## BEAUTIFUL DIAMOND RANGES



High shelf and reservoir. Well constructed. A great fuel saver. Burns either wood or coal.

\$79.50

Others \$49.50 to \$129.50

## TEX RITTER

Will Be At The

P. & B.

MUSIC SHOP TO AUTOGRAPH RECORDS

Monday, October 20

From 3:15 to 3:45

COME AND MEET TEX!

# MOVED!

We Wish to Announce That Our Wholesale Department Has Been Moved From Our Old Location to the Building

FORMERLY

OCCUPIED BY TAL J. PEARSON ON 10TH ST.

We will continue to handle a complete line of Feeds at our old location, for your convenience.

We will appreciate a visit from you at both our new and old locations.

Your friendly wholesale dealer,

J. FRANK PEARSON

Tenth Street

North Wilkesboro, N. C.

# Forester Furniture Company

George S. Forester, Proprietor

Corner B and 10th Streets

North Wilkesboro, N. C.