

Man Hounded By Tragedies Dies In Blast

Morganton, Oct. 17.—A leaking gas stove exploded at a rural filling station today, killing a 33-year-old man whose life had been hounded by tragedy for more than a year.

The body of Jimmy Boyce Mitchem was found in the shattered wreckage of his Twin Oaks Filling Station, about 15 miles south of Morganton near the Cleveland County line.

Sheriff's officers, attributing the explosion to a leaking gas stove, quoted neighbors as saying Mitchem had noticed the leak yesterday and remarked that he would have it repaired today.

The blast shook neighboring houses and levelled the concrete block building which housed the filling station.

Officers found a late model pickup truck a few feet from the front door and theorized that Mitchem was loading the truck prior to returning to Gastonia. Approximately \$75 in silver was found in the front seat. Several cases of beer were found in the truck and officers said a quantity of whisky had been in the front seat, but was destroyed by fire which damaged the truck.

Mitchem's wife was found shot and their 6-year-old daughter, Rhonda Pearl, was found dead near Gastonia in the Summer of 1948. Mitchem was held under bond for investigation of the case but he was released when police produced a note allegedly written by his wife.

The note, indicating that Mrs. Mitchem had killed the child and shot herself, said: "I had to do it. I didn't want her to live like the rest of us."

Mrs. Mitchem, whose trial was delayed while she gave birth to twins, pleaded no defense to a charge of murder in Gaston Superior Court this year. Judge Wilkins P. Horton directed that she be held in the State Hospital at Morganton until proven mentally competent.

Registration Motor Vehicles In State Reaches New High

Raleigh.—The Department of Motor Vehicles announces an all-time high in motor vehicle registration, the figure being 1,001,139 as of 18 October 1949. The registration for the entire year, 1948 was 958,542. On this same date in 1948, the registration was 935,495 a gain in 1949 of 65,794. North Carolina registration plates are not large enough to carry 7 numerals of the same size as the ones now in use and the letter "W" with 5 numerals is the new plate to denote the one million series. Numerous "W" plates will be noticed on the highways from this date on. The letter "W" has no particular significance other than a letter not now being used in the manufacture of the several types of license plates.

Girls' School Roster Carries Same Names

Winston-Salem.—The same names have been turning up on Salem College's classroom rosters for the last 200 years.

Officials of the North Carolina girls' school said about 15 per cent of this year's freshman class have sisters, mothers and grandmothers who are Salem alumnae.

The freshmen are descendants of students who attended Salem Female Academy, the forerunner of the college, in the days of coach-and-four transportation.

NOTICE TO CREDITORS OF MOORE'S MEAT MARKET

Notice is hereby given that the partnership formerly existing between L. H. Hollar and M. C. Hollar under the firm name of Moore's Meat Market, has been dissolved by the death of L. H. Hollar on the 4th day of April, 1949.

Notice is also given that all persons having claims against the partnership which was in existence at the time of the death of the deceased partner to exhibit the same to the undersigned surviving partner on or before 26th day of August, 1950.

M. C. HOLLAR
Surviving Partner.
10-27 6t (T)

ADMINISTRATRIX'S NOTICE

North Carolina, Wilkes County. Having qualified as Administratrix of the estate of E. S. Robinson, deceased, late of Wilkes County, North Carolina, this is to notify all persons having claims against the estate of said deceased to exhibit them to the undersigned at Millers Creek, N. C., on or before the 13th day of Oct., 1950, or this notice will be placed in bar of their recovery. All persons indebted to said estate will please make immediate payment.

This 13th day of October, 1949.
MRS. ROLAND ENGLEBERT,
Admrx. Estate E. S. Robinson,
Dec'd. 11-17-6t (T)

NOTICE OF SALE OF LAND

North Carolina, Wilkes County. The undersigned, having been appointed Commissioner to sell certain lands belonging to the estate of N. A. Wyatt, deceased, to make assets to pay debts due by said estate in a special proceeding entitled "Mrs. N. A. Wyatt, Administratrix, vs. Emily Miller, et al", being Case Docket No. _____ in the Office of the Clerk of the Superior Court Wilkes County, will offer for sale at public auction to the highest bidder for cash at the Courthouse Door in Wilkesboro, N. C. on the 21st day of November, 1949, at 12 o'clock noon, the following described tracts of land in Wilkes County, N. C.:

BEGINNING on a stone, J. T. Wyatt's and Henry Hanes' corner on top of a ridge and running North 87 1/2 degrees West with said Haynes' line 77 poles to a locust bush at his chestnut oak corner, now down; thence South 17 degrees East with Ben Key's line 8 poles; thence South 25 deg. West with same 8 poles thence S. 16 1/2 degs. W. 3 poles to a stake at his corner; thence North 80 degrees West with his line 3 1/2 poles to a stone at the old Chestnut, now down, same corner, continued with his line 66 poles more making the whole line 9 1/2 poles to a stake at or near John Winger's corner; thence South 3 degrees West with his line 166 poles to a chestnut, his corner; thence South 12 degrees East with his line 23 1/2 poles to a small blackgum bush; thence South 88 degrees East with his line 40 poles to a blackgum at or near his spanish oak corner; thence South 2 degrees West with agreed line 8 poles to a stake on the north bank of the road; thence South 29 1/2 degrees East with the road 17 poles; thence South 36 degrees East 6 1/2 poles South 22 degrees East 12 poles to a stake in said road and in his line; thence South 45 degrees East with his line 45 poles to a stone at his chestnut corner; also Monroe Wyatt's corner on the top of a ridge; thence North 56 1/2 degrees East with his marked line 21 poles North 61 degrees East with same 6 poles North 62 degrees East 12 poles North 31 1/2 degrees East 4 poles North 69 degrees East 51 poles to a large black pine, his corner in a cliff; thence North 47 1/2 degrees East with agreed line made between Monroe Wyatt and J. F. Wyatt, 60 poles to a stake in the branch, agreed corner; thence South 42 degrees East down the branch Monroe Wyatt's own corner near the North bank of the branch; thence North 2 1/2 degrees West with his line as follows; 20 poles North 15 degrees West 4 poles North 17 degrees West 6 poles North 16 1/2 degrees West 8 poles North 7 degrees West 15 poles North 4 1/2 degrees West 10 poles North 14 degrees West 10 poles North 15 degrees East 8 poles to a pine, his corner on top of a ridge; thence with his line as follows: South 85 degrees East 11-12 poles North 89 1/2 degrees East 6 poles South 89 1/2 degrees East 6 poles South 89 1/2 degrees East 10 poles South 80 1/2 degrees East 6 poles South 72 degrees East 6 poles South 72 degrees East 8 poles South 70 1/2 degrees East 3 poles South 85 degrees East 11 poles to a stone, his corner on N. W. Bank of road; thence North 55 degrees East with his line and road as follows: 5 poles North 66 degrees East 2 1/2 poles North 88 degrees East 4 1/2 poles North 79 degrees East 10 poles North 67 degrees East 7 poles North 59 degrees East 8 1/2 poles North 40 degrees East 2 poles North 67 degrees East 6 poles South 50 degrees East 2 1/2 poles to a stone in the branch, his corner; thence up the branch South 6 1/2 degrees East with his line and branch as follows: 4 poles South 38 degrees West 6 poles South 22 degrees West 8 poles South 19 degrees West 4 poles same course continued leaving the branch with his line 5 poles; thence South 6 1/2 degrees West 10 poles South 7 degrees West 10 poles South 7 degrees East 6 poles South 1 degree West 8 poles South 8 1/2 degrees West 4 poles South 8 poles South 4 degrees West 2 poles South 27 1/2 degrees West 11 poles to a chestnut in a hollow; his corner; thence South about 80 degrees West with his line 47 1/2 poles to his corner, a white oak near the bank of a small branch; thence South 15 1/2 degrees East up and with the meanderings of said branch and his line 4 poles South 51 1/2 degrees East 4 poles South 15 degrees East 10 poles South 40 degrees East 7 poles South 15 degrees East 6 poles South 47 degrees West 2 1/2 poles to some large rocks in the branch in the line of the heirs of Henry Bell, deceased, line; thence with their line as follows: East about 26 poles to a stone at their corner; thence South 2 degrees West with their line 44 poles to a spanish oak, D. F. Absher's corner; thence South 88 degrees East with his line 54 poles to a stake in his line at L. W. Shumate's Southwest corner; thence North with his line to a pine, his corner, also J. F. Wyatt's corner; thence North with his line 58 poles to his corner, a chestnut oak, now down, on a ridge with pointers marked; thence North 23 degrees East with same 48 poles to a chestnut, his corner; thence North 10 degrees West with his line 23 poles to a maple, his corner; thence North 5 degrees East with same 21 2-5 poles to a stake in Wooten's Creek; thence up and with the meandering of said creek as follows: N. 36 deg. W. 12 poles

North 21 1/2 degrees East 4 poles North 67 degrees West 6 poles South 78 1/2 degrees West 10 poles South 80 degrees West 6 poles North 13 degrees West 6 poles, North 75 degrees West 4 poles South 75 degrees West 5 poles South 65 degrees West 14 poles West 8 poles South 13 1/2 degrees West 7 1/2 poles West 6 poles, South 47 1/2 degrees West 8 poles South 5 degrees West 4 poles North 82 1/2 degrees West 5 poles North 24 degrees West 27 poles to an alder and stone, his corner, also at J. F. Wyatt's corner on the west bank of said creek; thence with J. F. Wyatt's line as follows: North 48 degrees West 7 poles North 84 degrees West 5 poles to a stake, his corner in a small branch; thence North 65 degrees West with his line 2 1/2 poles North 58 degrees West 5 poles North 76 1/2 degrees West 10 poles South 85 degrees West 4 poles South 83 1/2 degrees West 5 poles South 62 degrees West 8 poles to a stake at the head of the branch; thence North 88 degrees West 4 poles North 78 degrees West 12 poles South 84 degrees West 7 poles to a large rock in a hollow, his corner; thence North 76 degrees West 6 poles North 55 degrees West 6 poles North 74 1/2 degrees West 12 poles to a stake, his corner, West 22 poles to a pine, his corner on top of the ridge; thence up the ridge with his line as follows: North 28 1/2 degrees West 5 poles North 38 1/2 degrees West 14 poles to a pine, his corner on top of a ridge North 24 degrees West 5 3-4 poles North 16 degrees West 11 poles North 61 degrees West 15 poles North 79 1/2 degrees West 16 poles South 80 degrees West 14 poles North 68 1/2 degrees West 9 poles North 73 degrees West 10 poles to the beginning, containing 377 3-8 acres, more or less. For further description to the above tract of land, reference is hereby made to Deed from John R. Jones, commissioner, to N. A. Wyatt, recorded in Book No. 123 at Page No. 319, Wilkes County Registry. BEGINNING on a chestnut, N. A. Wyatt's corner, now down but a stone now planted, and running a North direction with N. A. Wyatt's line to a stone, then West to a stone and blackgum corner; then North with N. A. Wyatt's to a locust, Henry

Haynes and Ben Key's corner; then bounded on the west by the lands of Ben Key and W. Key then the same course lands of Walter Wyatt and the C. V. Bingham lands on the South by the lands J. A. Key and W. A. Wiles on the East by the lands N. A. Wyatt and W. A. Wiles to the beginning, containing 400 acres, more or less; for further description to the above tract of land, reference is hereby made to deed from John Bell and Margie Bell, recorded in Book No. 218 at Page No. 137, Wilkes County Registry.

BEGINNING On a poplar stump in W. H. Lockhart's line; thence Southeast with J. A. Barlow's line to the Emily Miller corner; thence Northeast with Emily Miller's line to a chestnut near the head of a small drain; thence Northwest with said drain to Mulberry Creek; thence up said creek to E. M. Lockhart's corner; thence Northwest with Lockhart's line to the beginning, containing 4 acres, more or less. Further description see deed from H. H. Jennings to N. A. Wyatt, recorded in Book No. _____ at Page No. _____, Wilkes County Registry.

BEGINNING on a stake in the center of the road, Roberts' corner and running North 3 degrees West with said Roberts' line 21 poles to a small mahogany, Roberts' other corner at Mulberry Creek; thence up and with the creek North 75 deg. W. 25 poles to the mouth of Eli Brown's spring branch, Hardin Jennings' line; thence South 34 degrees West with same branch 10 poles to a chestnut, Hardin Jennings' corner; thence South 5 degrees West up the branch 18 poles to a dogwood, R. C. Church's corner; thence South 29 degrees East 26 poles to a stake in the center of the road; thence North 60 degrees East 10 poles to a stake in the same road; thence North 30 degrees East 20 poles to the beginning, containing six acres, more or less; for further description see deed from R. C. Church and wife, Mabel Chuch, recorded in Book No. 224 at Page No. 491, Wilkes County Registry.

This sale will be made subject to the confirmation of the Court. This the 18th day of October 1949.

TOMMYE M. CARTER
Commissioner 11-14-4t (T)

Refresh... Add Zest To The Hour



Serving Coke Serves Hospitality



5¢

Ask for it either way... both trade-marks mean the same thing.

BOTTLED UNDER AUTHORITY OF THE COCA-COLA COMPANY BY North Wilkesboro Coca-Cola Bottling Co

© 1949, The Coca-Cola Company

Support The Scout Drive

Want Comfort?



OIL HEATING

Delivers dependable comfort to keep your home snugly, comfortably warm.

Holcomb Bros., Inc.
Phone 254, Elkin, N. C.

"BILL DING'S" Business is BUILDING Business

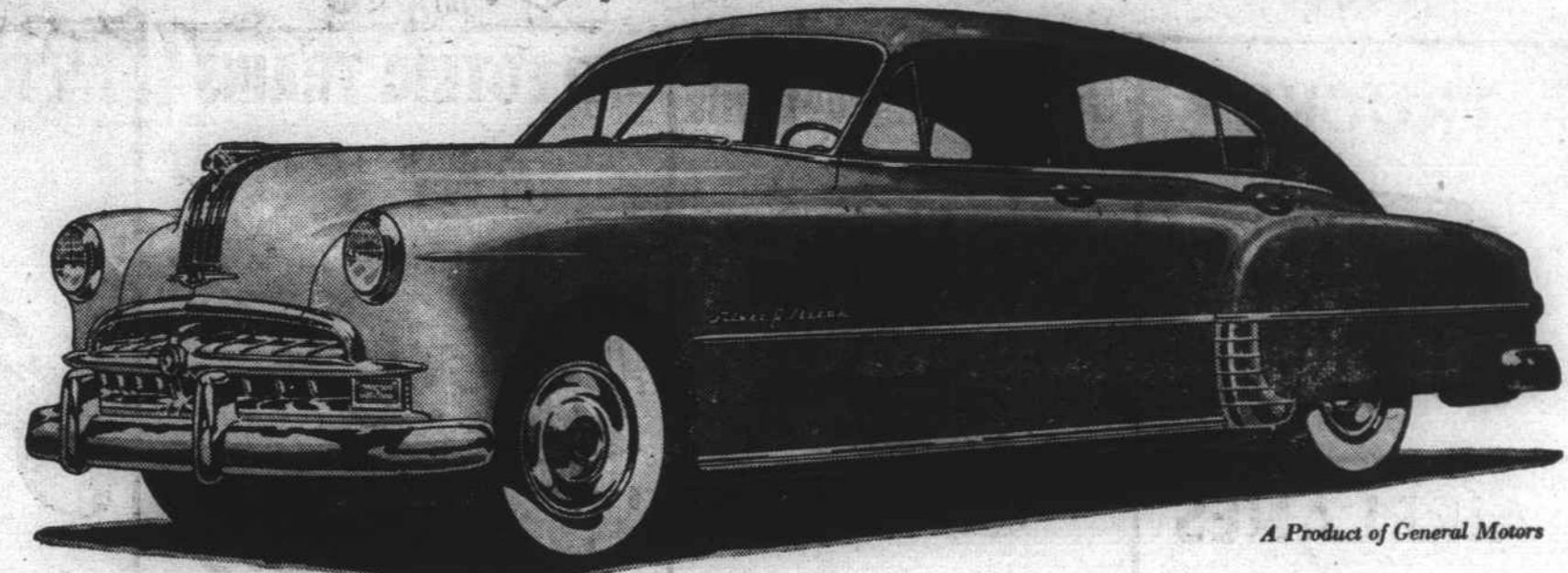


SATISFACTION SURE PREVAILS WHENEVER WE MAKE BUILDING SALES!

Let Us Figure Your COMPLETE JOB

WILKESBORO N.C. BUILDING MATERIAL PHONE 7 - Established in 1899 - N. WILKESBORO

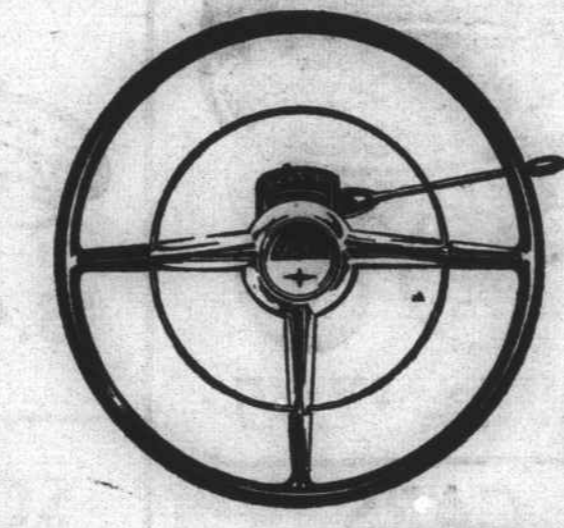
You ought to be driving a PONTIAC



A Product of General Motors

Come In-See How Little It Costs!

Where the new Pontiac is concerned, there are just two kinds of people—prudent owners and ardent admirers. And for every owner there are ten admirers! If you are still among the many who admire Pontiac from afar, we can only tell you this: We are glad you like this beautifully impressive car, but we can't help wondering what keeps you from fulfilling the wish to own one! The chances are you are missing a lot of satisfaction and pleasure simply because you do not realize how very, very easy it is to own a Pontiac. For Pontiac, in spite of its unrivalled beauty, is a low-priced car. It is, in fact, the lowest-priced straight eight in America, lower priced by far than a great many sixes! Come in and let us show you just how little money it takes to become a Pontiac owner. You'll be pleasantly surprised—because it's a lot less than you think!



LOWEST-PRICED CAR IN THE WORLD WITH HYDRA-MATIC DRIVE gives you unsurpassed "automatic" driving ease. No clutch pedal. No continuous shifting. You just sit back and drive! GM Hydra-Matic has proved, in millions of miles of driving, the most economical of all automatic transmissions! Optional on all models at extra cost.

MIDWAY PONTIAC, INC.

East Main St. Phone 720 Wilkesboro, N. C.

CHECKERBOARD CHUCKLES • From Your Purina Dealer

I'M GOING OUT FOR FOOTBALL NEXT FALL.

ME TOO, BET I BEAT YOU OUT AT TACKLE

I'LL OUTGROW YOU ON THE PURINA PLAN.

OH YEAH? I'M A STRAIGHT GRAIN MAN

6 MONTHS LATER—HOW'D YOU GET THAT WAY?

PURINA MAN, PURINA!

Up to 1/3 MORE PORK— from the same amount of grain

Balance your grain with Purina Hog Chow instead of tankage, soybean oil meal and other single ingredient supplements. Come in and see about the Purina plan.

Wilkes Farm Center
"The Home Of Purina Feeds"
Phone 673-J—Between The Wilkesboros