

### WILKES FORESTRY CONSERVATION WEEK HAS EXCELLENT PROGRAM

The week beginning Monday, November 7, 1949 should be called "Wilkes County Forestry Conservation Week." Several hundred boys and adults in Wilkes County will attend a series of forestry meetings that week and on Friday, November 11 the program will end with an all day Field Day for Sawmill Operators.

The boys, belonging to 4-H, FFA and NFA groups, with the cooperation of their respective school principals, will attend one of five meetings. At each meeting the boys will be sub-divided into three groups for instruction in timber scaling, selective timber cutting and timber stand improvement. The groups will rotate in order to obtain instruction in all three phases of the

For the Veteran Farm Trainees and any other adults, three afternoon programs of a similar nature will be conducted as follows:

1. Tuesday, November 8—1:30 p. m. at the E. F. Edwards farm near Ronda.
2. Wednesday, November 9—1:30 p. m. at the B. S. Call farm near the Wilkesboro school.
3. Thursday, November 10—1:30 p. m. at the Shelmer Blackburn farm near Phil Yates' store on highway 421.
4. The Negro Veteran Farm trainees and other adult negro farmers will meet with the NFA boys at Lincoln Heights School 9:00 a. m., Thursday, November 10.

Mr. R. W. Graeber, Extension

Forester, and six members of his staff along with the Wilkes County Farm Agent will conduct the meetings. These meetings are part of the forestry program sponsored by the Wilkes Chamber of Commerce.

### Sawmill Operators Field Day Events November 11th

Will Be Held Friday At Ralph Frazier's Plant In This City

The Sawmill Operators Field Day conducted by the North Carolina State College Extension Service and sponsored by the Wilkes Chamber of Commerce will be held Friday, November 11, 1949 at the Frazier Lumber Company of North Wilkesboro.

The program will start promptly at 9:30 a. m. with Mr. R. W. Graeber, Extension Forester in charge. Mr. Graeber will be assisted by several members of his staff, including John Gray and Walter Keller. Other forestry experts who will take part in the program are R. A. Campbell of the Southeastern Forest Experiment Station, A. H. Maxwell of the North Carolina Forest Service and representatives of several forestry equipment manufacturers.

Demonstrations will be conducted at the mill on Log Scaling, Log Grading, Sawing for Grade, Mill Maintenance and Mill Adjustments to Increase Production and Improve Accuracy.

In the woods, demonstrations will be conducted on Tree Marking and Scaling; Why and How to Plant Idle Land; and Maintenance of Axes, Crosscut Saws and Power Saws.

The program will end about 5:00 p. m. with a chopping and sawing contest. Lunch will be served by the sponsor. Those planning to be present for lunch should notify Tom Jenrette, Secretary of the Chamber of Commerce or Paul Choplin, County Farm Agent not later than Tuesday, November 8.

### THINKING OF STRAWBERRIES

By CARL E. VANDEMAN (Assistant County Agent)

Land that is intended for strawberries should be plowed in fall. This permits the soil to become well settled and avoids much of the delay that might be caused by a wet spring season.

The aim in preparing strawberry land is to develop high content of organic matter and free of weeds. Heavy applications of fresh manure can be applied in fall so the organic matter can become mixed with the soil. Where manure is not available a green manure crop of a type that will live through the winter will add to the organic matter and retard erosion and leaching of the soil. Land with clover or other leguminous crops is ideal for preparation and planting to strawberries.

Fall plowing helps destroy weed seeds and makes use of the weeds in building up humus. As a rule a field that has been in grass sod for a year or more is not desirable for growing strawberries until a year after it has been plowed because of the danger of a severe infestation of large white grubs. These grubs would eat off the roots of the young strawberries and do considerable damage to the planting before the first crop is produced. White grubs are not a serious factor in cultivated soil.

By practicing chemical defoliation—ridding the plant of its leaves—many Tar Heel farmers are improving both the yield and the quality of their cotton crops.

"LAFF IT OFF"—NOV. 10-11.

### How Are Your Floors?

FREE ESTIMATES ON Inlaid Linoleum Asphalt & Rubber Tile or Wall Linoleum

Gray Brothers FURNITURE CO.

WILKESBORO, N. C.

### Love Won't Find Way Out Of Jail

Hattiesburg, Miss.—It may be true that love will always find a way—but not out of a Mississippi jail.

Sheriff J. E. Bethea yesterday intercepted a magazine that convicted murderer Murdock Hinton was passing to convicted murderer Mrs. Kelon Ruth McLemore. In it was a note outlining plans for breaking jail and eloping.

Hinton is under death sentence for slaying his wife, Mrs. McLemore is serving life for killing her husband. Both are awaiting the results of Supreme Court appeals.

Lima and snap beans were staples of the American Indians' diet.

SAVE with....  
MUTUAL INSURANCE  
FIRE - AUTOMOBILE - CASUALTY

# Sentinel

INSURANCE AGENCY

Phone 467 208 Ninth Street

Support The Scout Drive

### For Tiny 49ers

### SPECIAL SALE

-of-

### Portugal, Philippine

and

### Occupied Japan

### Handmade BABY'S WEAR

DRESSES—White, Pink and Blue

Bibs - Slips - Pillow Cases

and Toddler Broadcloth Dresses

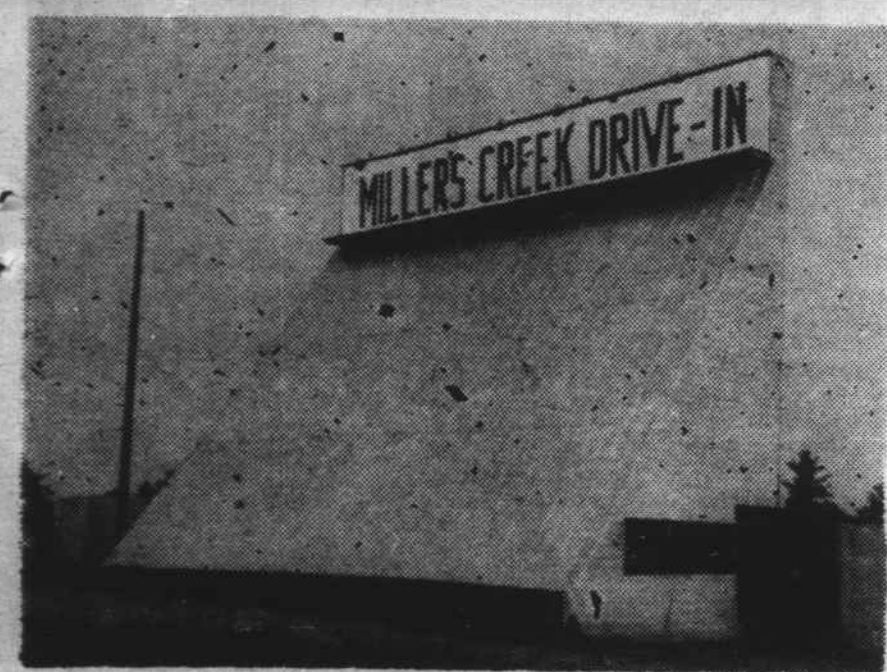
# \$1 EACH



Whether you're still expecting — or already have your little one — we can help you with his (or her) clothing problems.



North Wilkesboro



### MILLER'S CREEK DRIVE-IN

Monday and Tuesday, November 7 and 8th—

### "GOLDEN BOY"

With Barbara Stanwyck - Wm. Holden

Also News and Cartoon

Wednesday, November 9th—

BARGAIN NIGHT—ADM. 25c

Watch For Free Prizes

Hopalong Cassidy In

### "RUSTLERS VALLEY"

Thursday and Friday, November 10 and 11—

W. C. Fields and Mae West In

### "MY LITTLE CHICKADEE"

SHOWS: Start 7:00 P. M. and 9:00 P. M.

### Trade Promotion Committee Tells Holiday Schedule

Trade Promotion committee of the Wilkes Chamber of Commerce has issued a reminder relative to the holiday schedule for stores in the Wilkesboros.

As a result of a poll of merchants early in the year, it was decided with only one dissenting vote to close on Thanksgiving Day.

It was also decided by vote of 64 to eight that stores would be closed for Christmas on December 26 and 27. Christmas Day will be Sunday, December 25, and it has been the custom in recent years to give all personnel two working days at Christmas holidays.

Sheep numbers are increasing in Edgecombe county, according to Farm Agent J. C. Powell, who says farmers in the county have purchased 240 head of sheep during the past six months.

Enjoy *WAAAA*  
**OIL HEAT**  
with this AUTOMATIC



**Kresky FLOOR FURNACE**

- CLEAN
- ECONOMICAL
- LOW COST
- LONG LIFE
- DUAL WALL OR FLOOR REGISTER

Listed by UNDERWRITERS LABORATORIES, INC.

Manual or Automatic Control Complete Installation Including Outside Tanks

Call or See Us For Estimates

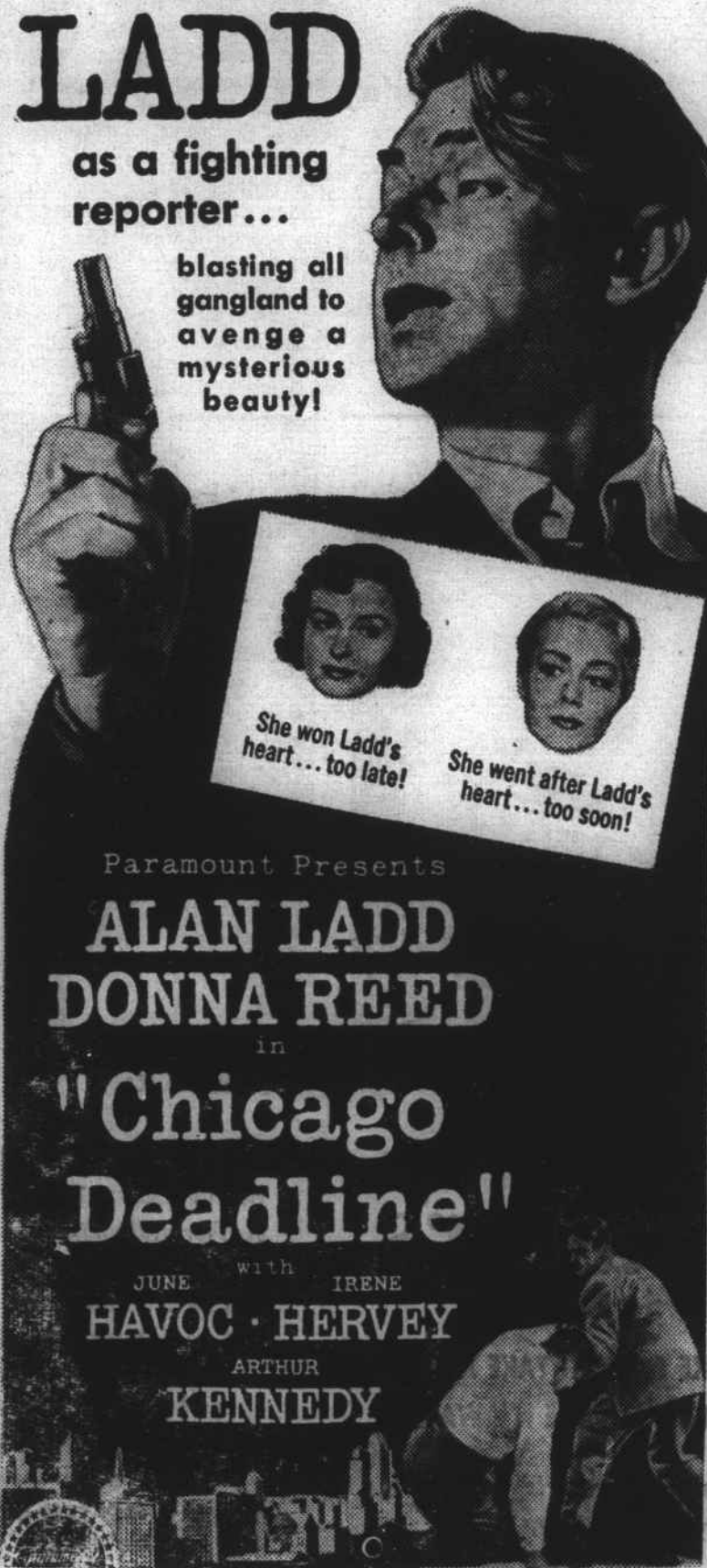
Gray Brothers FURNITURE CO. WILKESBORO, N. C.

THURSDAY And FRIDAY

# LADD

as a fighting reporter...

blasting all gangland to avenge a mysterious beauty!



Paramount Presents

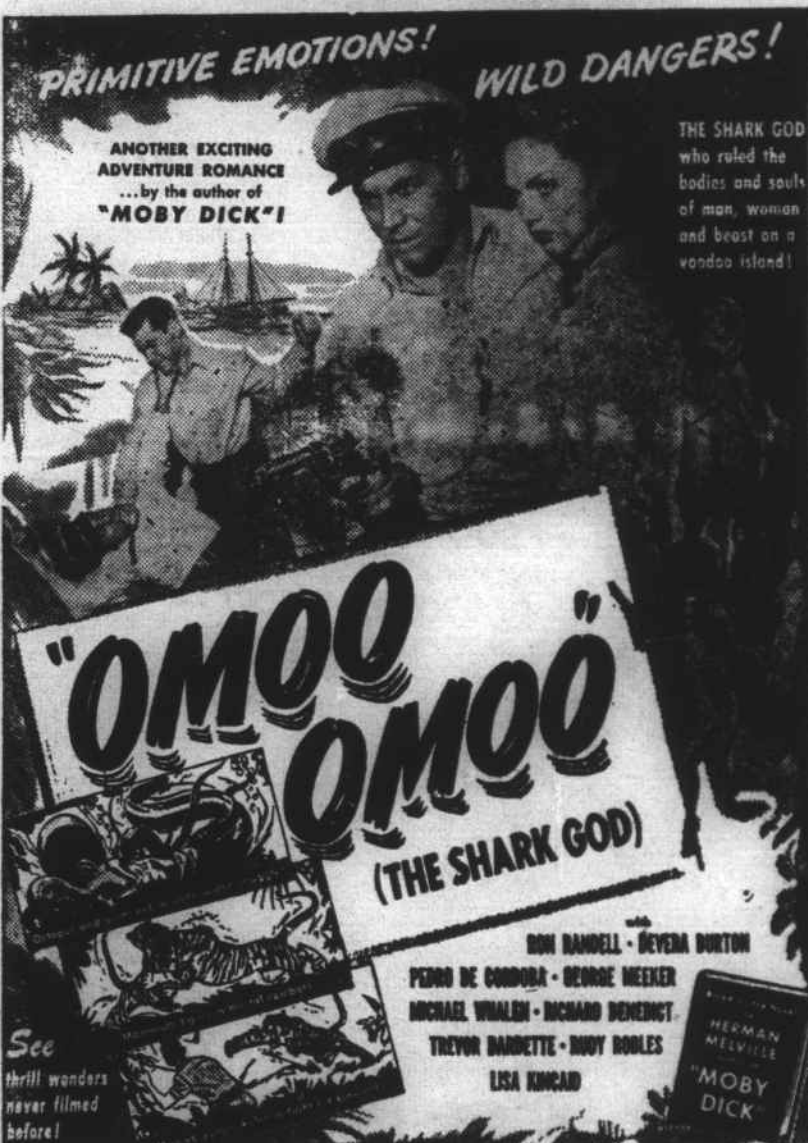
ALAN LADD DONNA REED

## "Chicago Deadline"

JUNE WITH IRENE HAVOC · HERVEY ARTHUR KENNEDY

LADD'S New SMASH Hit — As You Love Him

TUESDAY ONLY



# "OMOO OMOO" (THE SHARK GOD)

See thrill wonders never filmed before!



And The Original Arizona Wranglers 2 — TOP ACTION FEATURES — 2

# LIBERTY

SHOWING TUESDAY ONLY