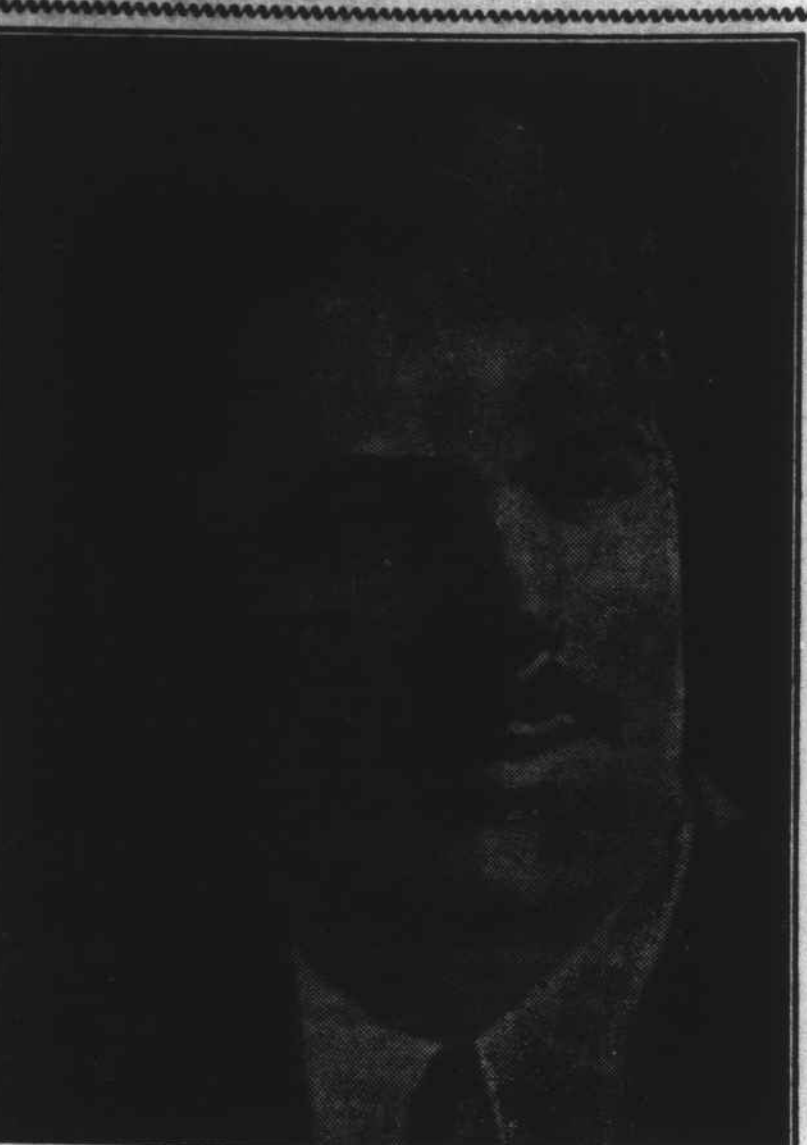


### Dr. McDonald To Head Polio Drive



New York, N. Y.—Dr. Ralph McDonald, prominent Winston-Salem educator and civic leader, has been appointed North Carolina State Chairman of the 1950 March of Dimes, Basil O'Connor, president of the National Foundation for Infantile Paralysis, announced recently. It is Dr. McDonald's eighth consecutive year as head of the fund raising drive in North Carolina.

As chairman, Dr. McDonald will be in over-all charge of planning and organizing the annual polio drive, and will coordinate activities of all city and county campaign directors in the state.

The March of Dimes is conducted each January by the National Foundation and its 2,800 county chapters to finance the nationwide fight against polio in the fields of patient care, scientific research and professional education. The 1950 appeal will be held January 16-31.

Dr. McDonald, a top official of the National Education Association, was previously associate director of the extension division of the University of North Carolina. A resident of Winston-Salem for the past 20 years, he has organized and directed several

statewide educational and civic movements. He has served in the state legislature and is a former faculty member of Salem College. In addition to his professional activities, Dr. McDonald is president of the National Committee on Atomic Information and has also served as a member of the Board of Managers of the National Congress of Parents and Teachers and as chairman of the Committee on World Citizenship.

Commenting on Dr. McDonald's re-appointment to North Carolina's top March of Dimes post, Mr. O'Connor declared that the National Foundation is now facing the "most crucial period" in its twelve-year history.

He described the 1949 polio epidemic as the worst on record, with more than 40,000 cases expected by the end of the year. "By December," he said, "the National Foundation and its chapters will have spent \$31,000,000 assisting polio victims throughout the nation."

Mr. O'Connor also pointed out that by mid-summer the national epidemic aid fund had run "dangerously low" and the organization was forced to conduct the recent Polio Epidemic Emergen-

cy Drive as a "stop-gap" measure to carry it over until the regular March of Dimes campaign in January.

From January 1 through September 30, he said, the National Foundation sent more than \$7,000,000 to hard-hit Chapters whose own March of Dimes treasuries were exhausted caring for local polio patients.

#### NOTICE OF SALE OF LAND

North Carolina, Wilkes County

The undersigned, having been appointed Commissioner to sell certain lands belonging to the estate of N. A. Wyatt, deceased, to make assets to pay debts due by said estate in a special proceeding entitled "Mrs. N. A. Wyatt, Administratrix, vs. Emily Miller, et al", being Case Docket No. \_\_\_\_\_ in the Office of the Clerk of the Superior Court Wilkes County, will offer for sale at public auction to the highest bidder for cash at the Courthouse Door in Wilkesboro, N. C. on the 21st day of November, 1949, at 12 o'clock noon, the following described tracts of land in Wilkes County, N. C.:

**BEGINNING** on a stone, J. T. Wyatt's and Henry Hanes' corner on top of a ridge and running North 87 1/2 degrees West with said Haynes' line 77 poles to a locust bush at his chestnut oak corner, now down; thence South 17 degrees East with Ben Key's line 8 poles; thence South 25 deg. West with same 8 poles thence S. 16 1/2 degs. W. 3 poles to a stake at his corner; thence North 80 degrees West with his line 3 1/2 poles to a stone at the old Chestnut, now down, same corner, continued with his line 66 poles more making the whole line 9 1/2 poles to a stake at or near John Wingler's corner; thence South 3 degrees West with his line 156 poles to a chestnut, his corner; thence South 12 degrees East with his line 23 1/2 poles to a small blackgum bush; thence South 88 degrees East with his line 40 poles to a blackgum at or near his spanish oak corner; thence South 2 degrees West with agreed line 8 poles to a stake on the north bank of the road; thence South 29 1/2 degrees East with the road 17 poles; thence South 36 degrees East 6 1/2 poles South 22 degrees East 12 poles to a stake in said road and in his line; thence South 45 degrees East with his line 45 poles to a stone at his chestnut corner; also Monroe Wyatt's corner on the top of a ridge; thence North 56 1/2 degrees East with his marked line 21 poles North 61 degrees East with same 6 poles North 62 degrees East 12 poles North 31 1/2 degrees East 4 poles North 69 degrees East 51 poles to a large black pine, his corner in a cliff; thence North 47 1/2 degrees East with agreed line made between Monroe Wyatt and J. F. Wyatt, 60 poles to a stake in the branch, agreed corner; thence South 42 degrees East down the branch Monroe Wyatt's own cor-

ner near the North bank of the branch; thence North 2 1/2 degrees West with his line as follows; 20 poles North 15 degrees West 4 poles North 17 degrees West 6 poles North 16 1/2 degrees West 8 poles North 7 degrees West 15 poles North 4 1/2 degrees West 6 poles North 14 degrees West 10 poles, North 20 degrees East 6 poles North 15 degrees East 8 poles to a pine, his corner on top of a ridge; thence with his line as follows: South 85 degrees East 11-12 poles North 89 1/2 degrees East 6 poles South 89 1/2 degrees East 6 poles South 89 1/2 degrees East 10 poles South 80 1/2 degrees East 6 poles South 72 degrees East 6 poles South 72 degrees East 6 poles South 80 degrees East 8 poles South 70 1/2 degrees East 3 poles South 85 degrees East 11 poles to a stone, his corner on N. W. Bank of road; thence North 55 degrees East with his line and road as follows: 5 poles North 66 degrees East 2 1/2 poles North 88 degrees East 4 1/2 poles North 79 degrees East 10 poles North 67 degrees East 7 poles North 59 degrees East 8 1/2 poles North 40 degrees East 2 poles North 67 degrees East 6 poles South 50 degrees East 2 1/2 poles to a stone in the branch, his corner; thence up the branch South 6 1/2 degrees East with his line and branch as follows: 4 poles South 38 degrees West 6 poles South 22 degrees West 8 poles South 19 degrees West 4 poles same course continued leaving the branch with his line 5 poles; thence South 6 1/2 degrees West 10 poles South 7 degrees West 10 poles South 7 degrees East 6 poles South 1 degree West 8 poles South 8 1/2 degrees West 4 poles South 8 poles South 4 degrees West 2 poles South 27 1/2 degrees West 11 poles to a chestnut in a hollow; his corner; thence South about 80 degrees West with his line 47 1/2 poles to his corner, a white oak near the bank of a small branch; thence South 15 1/2 degrees East up and with the meanderings of said branch and his line 4 poles South 51 1/2 degrees East 4 poles South 15 degrees East 10 poles South 40 degrees East 7 poles South 15 degrees East 6 poles South 47 degrees West 2 1/2 poles to some large rocks in the branch in the line of the heirs of Henry Bell, deceased, line; thence with their line as follows: East about 26 poles to a stone at their corner; thence South 2 degrees West with their line 44 poles to a spanish oak, D. F. Absher's corner; thence South 88 degrees East with his line 54 poles to a stake in his

line at L. W. Shumate's South-west corner; thence North with his line to a pine, his corner, also J. F. Wyatt's corner; thence North with his line 58 poles to his corner, a chestnut oak, now down, on a ridge with pointers marked; thence North 23 degrees East with same 48 poles to a chestnut, his corner; thence North 10 degrees West with his line 23 poles to a maple, his corner; thence North 5 degrees East with same 21 2-5 poles to a stake in Wooten's Creek; thence up and with the meandering of said creek as follows: N. 36 deg. W. 12 poles North 21 1/2 degrees East 4 poles North 67 degrees West 6 poles South 78 1/2 degrees West 10 poles South 80 degrees West 6 poles North 13 degrees West 6 poles, North 75 degrees West 4 poles South 75 degrees West 5 poles South 65 degrees West 14 poles West 8 poles South 13 1/2 degrees West 7 1/2 poles West 6 poles, South 47 1/2 degrees West 8 poles South 5 degrees West 4 poles North 82 1/2 degrees West 5 poles North 24 degrees West 27 poles to an alder and stone, his corner, also at J. F. Wyatt's corner on the west bank of said creek; thence with J. F. Wyatt's line as follows: North 48 degrees West 7 poles North 84 degrees West 5 poles to a stake, his corner in a small branch; thence North 55 degrees West with his line 2 1/2 poles North 58 degrees West 5 poles North 76 1/2 degrees West 10 poles South 85 degrees West 4 poles South 33 1/2 degrees West 5 poles South 62 degrees West 8 poles to a stake at the head of the branch; thence North 88 degrees West 4 poles North 78 degrees West 12 poles South 84 degrees West 7 poles to a large rock in a hollow, his corner; thence North 76 degrees West 8 poles North 55 degrees West 6 poles North 74 1/2 degrees West 12 poles to a stake, his corner, West 22 poles to a pine, his corner on top of the ridge; thence up the ridge with his line as follows: North 28 1/2 degrees West 5 poles North 33 1/2 degrees West 14 poles to a pine, his corner on top of a ridge North 24 degrees West 5 3-4 poles North 16 degrees West 11 poles North 61 degrees West 15 poles North 79 1/2 degrees West 16 poles South 80 degrees West 14 poles North 68 1/2 degrees West 9 poles North 73 degrees West 10 poles to the beginning, containing 377 3-8 acres, more or less. For further description to the above tract of land, reference is hereby made to Deed from John R. Jones, commissioner, to N. A. Wyatt, re-

corded in Book No. 123 at Page No. 319, Wilkes County Registry. **BEGINNING** on a chestnut, N. A. Wyatt's corner, now down but a stone now planted, and running a North direction with N. A. Wyatt's line to a stone, then West to a stone and blackgum corner; then North with N. A. Wyatt's to a locust, Henry Haynes and Ben Key's corner; then bounded on the west by the lands of Ben Key and W. Key, then the same course lands of Walter Wyatt and the C. V. Bingham lands on the South by the lands J. A. Key and W. A. Wiles on the East by the lands N. A. Wyatt and W. A. Wiles to the beginning, containing 400 acres, more or less; for further description to the above tract of land, reference is hereby made to deed from John Bell and Maggie Bell, recorded in Book No. 218 at Page No. 187, Wilkes County Registry.

**BEGINNING** On a poplar stump in W. H. Lockhart's line; thence Southeast with J. A. Barlow's line to the Emily Miller corner; thence Northeast with Emily Miller's line to a chestnut near the head of a small drain; thence North-west with said drain to Mulberry Creek; thence up said creek to H. M. Lockhart's corner; thence Northwest with Lockhart's line to the beginning, containing 4 acres,

more or less. Further description see deed from H. H. Jennings to N. A. Wyatt, recorded in Book No. \_\_\_\_\_ at Page No. \_\_\_\_\_, Wilkes County Registry.

**BEGINNING** on a stake in the center of the road, Roberts' corner and running North 3 degrees West with said Roberts' line 21 poles to a small mahogany, Roberts' other corner at Mulberry Creek; thence up and with the creek North 75 deg. W. 25 poles to the mouth of Eli Brown's spring branch, Hardin Jennings' line; thence South 34 West with same branch 10 poles to a chestnut, Hardin Jennings' corner; thence South 5 degrees West up the branch 18 poles to a dogwood, R. C. Church's corner; thence South 29 degrees East 26 poles to a stake in the center of the road; thence North 60 degrees East 10 poles to a stake in the same road; thence North 38 degrees East 20 poles to the beginning, containing six acres, more or less; for further description see deed from R. C. Church and wife, Mabel Church, recorded in Book No. 224 at Page No. 491, Wilkes County Registry.

This sale will be made subject to the confirmation of the Court. This the 18th day of October 1949.

TOMMYE M. CARTER  
Commissioner 11-14-49(T)

## FOR SALE

### FARM, HOME & POULTRY FARM

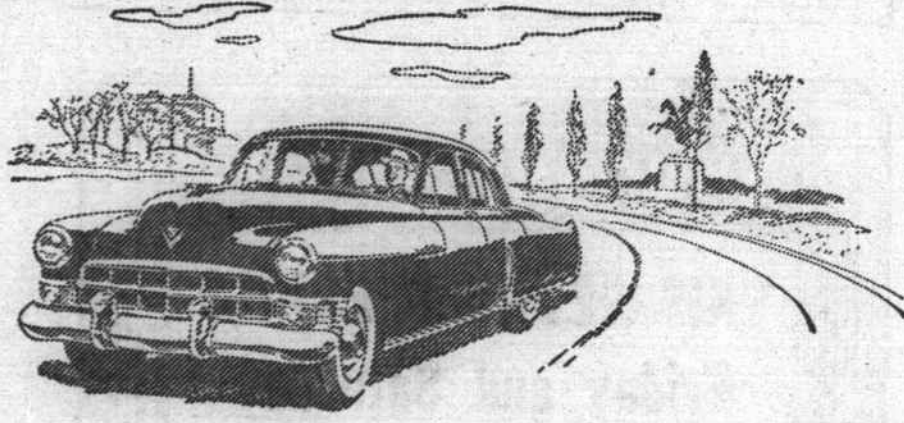
I will sell my farm of 24 acres, on which is my home of six rooms, and all modern conveniences and all necessary outbuildings. On this are two large chickenhouses, with over 10,000 feet of floor space, known as Flina Hill Poultry Farm, and fully equipped and in use.

★

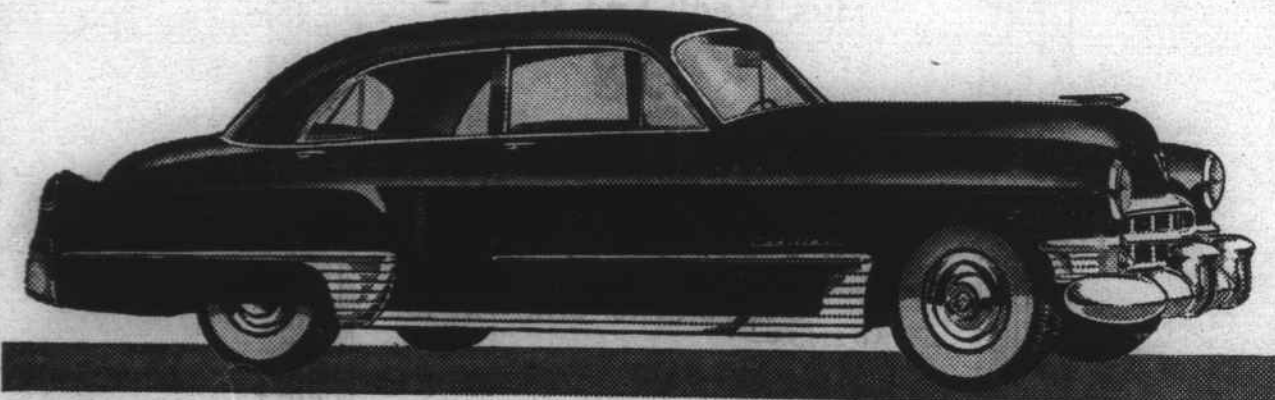
For further information see me.

## WALTER WELBORN

Hamptonville, N. C.



### A Man and His First Cadillac!



**S**eldom will you find a man in a happier state of mind than when he slides behind the wheel of his first Cadillac—and makes for the open highway.

There's the feeling of *pride* that is inescapable when a man comes into possession of something which is so universally admired . . .

. . . the feeling of *confidence* that comes from Cadillac's great reputation for quality, soundness and long life . . .

. . . the feeling of *elation* that comes from the car's amazing responsiveness to throttle and brakes . . .

. . . the feeling of *gratitude* that comes from being able to surround himself, and all who ride with him, with every safeguard an automobile can provide.

And, there is the soft, satisfying rush of the miles—the easy, restful ride—the positive, effortless handling—the sumptuous and comfortable surroundings.

Yes, it's a great thrill for a man when he goes for his first ride at the wheel of his first Cadillac.

*But it's only the beginning!*

Day after day, year after year, he will have that same wonderful feeling as he rolls his Cadillac out into the street or highway. For the joy of Cadillac ownership is deep and abiding.

Wouldn't you like to learn what it's like to sit at the wheel of a car that can mean so much to you? If so, come in today—for a ride that's a revelation.



**B. & L. MOTORS**  
'D' Street Phone 741 North Wilkesboro

## 2 PINTS for 35¢!



### Celebrating Our 15th Anniversary

Coble, always a leader in quality and value, in appreciation of our customers' approval of our premium quality dairy products, now on our 15th Anniversary offer you another wonderful bargain.

Here is an excellent opportunity for everyone, including those of you who are not already acquainted with Coble **PREMIUM QUALITY** ice cream, to enjoy this regularly priced 25¢ per pint value of the economy three-day special price—November 18th, 19th, and 20th—of two pints for 35¢.

All Coble dealers—and there are thousands of them—are ready to serve you with this special economy value! Don't miss this opportunity!

● ● ●

## COBLE DAIRY PRODUCTS, INC.