

WEATHER

Cloudy and mild this afternoon and tonight, scattered showers to-night beginning in mountains this afternoon. Tuesday, continued mild, clearing in north and west.

The Shelby Daily Star

CLEVELAND COUNTY'S NEWSPAPER SINCE 1894

TELEPHONES 1100

VOL. XLIII-61

ASSOCIATED PRESS NEWS

SHELBY, N. C.

MONDAY, MARCH 12, 1945

TELEMAT PICTURES

SINGLE COPIES-5c

- State Theatre Today - The Invasion of Iwo Jima and "Belle of the Yukon" Randolph Scott - Gypsy Rose Lee

Red Army Command Begins Shifting Large Forces To Berlin Front

40,000 U. S. TROOPS WIDEN RHINE BRIDGEHEAD

ROKOSOVSKY'S TASK IN NORTH ABOUT FINISHED

Enemy Resistance Between Mouths Of Oder, Vistula Smashed

BIG DRIVE IMPENDING

MOSCOW, March 12.—(P)—The Red army supreme command began to shift large forces to the Berlin front today after smashing enemy resistance between the mouths of the Oder and Vistula rivers.

Only a small chunk of territory at the northern extremity of Pomerania and the Polish corridor remained to be overrun by Marshal K. K. Rokossovsky's armored vanguards before he would be available for command of a vital sector of the front facing the German capital.

It seemed obvious that he again would take a place on Marshal Gregory K. Zhukov's right flank, from which he wheeled across East Prussia in mid-January and then speared into Pomerania little more than a month later.

The regrouping Russian strength was expected to mass the greatest concentration of men and guns for offensive operations since the Red banner was first carried over German soil.

Zhukov now mans more than a 130-mile stretch of the Oder from where it enters the Baltic to its eastward bend above Fuerstenberg. On his left flank Marshal Ivan S. Konev holds the Neisse river line from its confluence with the Oder to the Sudeten foothills, a distance of about 70 miles.

Bringing up the bulk of Rokossovsky's forces.

J. LEE ESKRIDGE RITES ARE HELD

Well Known Farmer Died At Home Early Sunday

James Lee Eskridge, 81, lifelong Cleveland resident died at his home at Metcalf's crossing Sunday at 2 a. m. after a period of ill health lasting 18 months.

The funeral is being conducted this afternoon at 3 p. m. from the Double Shoals Baptist church by Rev. John W. Suttle, assisted by Rev. W. A. Elam and Rev. D. F. Putnam. Burial will be in the Double Shoals cemetery.

Mr. Eskridge was a respected farmer and large land owner of the Metcalf community. He was married 47 years ago to Miss Isabel Yelton who survives together with seven children Maurice F. Everett T. Worth S. Clarence C. Delia and Mrs. Grady Whitener; a brother, John Eskridge of Shelby; and four sisters, Mrs. Janie Wright, Mrs. Dor Putnam, Mrs. Zulia Spurling, and Mrs. Fink Shytle, all of Cleveland county, and six grandchildren.

CHINESE REPORT JAP ATTEMPT TO LAND ON COAST

CHUNGKING, March 12.—(P)—Chinese forces have frustrated a small scale Japanese attempt to land on the coast of Fukien province about 40 miles south of Japanese-held Foochow, killing 100 of the enemy and driving off the rest, Chinese field dispatches said today.

The landing attempt was covered by two Japanese warships and probably represented an effort to expand the enemy's protective area around Foochow as a safeguard against a possible American landing, the dispatches declared.

Other unofficial Chinese reports said Chinese forces had broken into the city of Suichwan in Kiangsi province, former site of an important advanced base of the U. S. Air force. Severe fighting was said to be continuing inside the city.



HOW NINTH ARMY SPEARED TO THE RHINE—Tanks of the U. S. Second Armored (Hell on Wheels) Division of the Ninth Army left this pattern in German soil in their breakthrough to the Rhine. Scene is near Krefeld in Dusseldorf area within 4,000 yards of the Rhine. U. S. tanks have halted because of shelling from German tanks behind the burning building. Photo by George Silk, Life photographer with Wartime Still Picture Pool.

U. S. Bombers Blast Path Across Reich

550 American Planes Attack Nazi Targets On Baltic Coast In Support Of Russians

LONDON, March 12.—(P)—A mighty armada of more than 2,100 American warplanes slashed a wide path across northern Germany today with the main force of 650 bombers blasting military and naval installations on the Baltic coast in direct support of the Russian armies.

The German radio declared the Pomeranian capital of Stettin and the Nazi u-boat and naval base at Swinemunde, 35 miles northeast of Stettin, were the targets. An RAF spokesman credited Allied bombers based in Britain with laying waste to more than 450 miles of the Ruhr.

Swinemunde is the naval base and outer harbor for Stettin and is only 15 miles from where the most advanced Russian troops were last reported. Red army troops meanwhile are hammering at the gates of Stettin.

The remainder of the bomber fleet split up for attacks on railway yards behind the desolated Ruhr valley, the Eighth air force announcement said.

Knocking out Swinemunde would hamper the sea supply route to the Stettin front. The rail and river links between Stettin and Berlin already are badly battered.

The total force sent out on the 28th successive day of attacks on the Reich was better than 1,350 heavy bombers with an escort of 750 fighters.

In addition to the Baltic attacks other heavies battered half a dozen towns between Frankfurt-on-Main and the Ruhr which turn out the bulk of the German war production.

See U. S. BOMBERS Page 2

Nimitz Believes Jap Fleet Ready For Action, But Weak

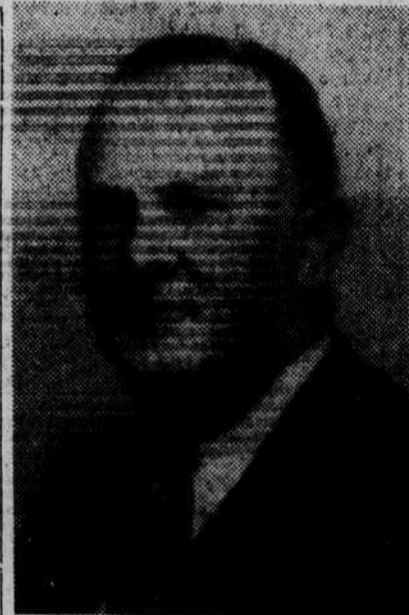
SAN FRANCISCO, March 12.—(P)—The Japanese Imperial fleet, repairing battle damage suffered in recent actions, is ready for combat again, U. S. Fleet Admiral Chester W. Nimitz disclosed here. But, Nimitz, emphasized as a press conference, "the Japanese fleet now is so inferior in strength compared to the United States fleet that it must choose its time to come out."

He added significantly: Our policy is to keep our fleet more or less concentrated so that no matter what time they choose, we will have a very large reception committee waiting. The 60-year-old commander-in-chief of the Pacific fleet said soon "the Japanese will be unable to operate any shipping whatever to The Netherlands East Indies or to their holdings in the South China sea."

U. S. SUBMARINES U. S. submarines are operating freely along the China coast and our fleet is approaching the extreme westward part of the Pacific ocean," he said.

He stressed, however, "the Japanese will retain their communications to the Asiatic mainland until we establish our sea and air power in positions from which we can completely cut these communications."

The Nipponese army is still '90 per cent intact," and the Allies will "have to go all out to destroy or defeat Japan."



SHEM K. BLACKLEY

BLACKLEY HEAD OF UNITED FUND

Named County Chairman By Victor Bryant

Appointment of Shem K. Blackley, insurance executive and president of the Shelby Rotary club, to the Cleveland County chairmanship of the United War Fund was announced at Raleigh today by Victor S. Bryant, state chairman.

Mr. Blackley thus succeeds J. Hopson Austell who headed the county organization last year and was campaign chairman two years ago, but who asked to be relieved of further responsibility in that

See SHEM K. BLACKLEY Page 2

FALLSTON NEAR \$2,500 MARK

Everett Spurling, chairman of the Red Cross War Fund appeal in Fallston Baptist church, today sent a check for \$1,169 representing the subscription of that congregation to this year's campaign. It is a substantial increase over last year.

Meanwhile, the Fallston Methodists, whose chairman is C. C. Falls, have raised a similar amount though final report has not been rendered.

A complete tabulation of contributions by churches is being made up and will be published in The Star Tuesday.

SUPREME COURT REFUSES RULING ON WARD CASE

Will Not Rule Until Circuit Court Reaches Its Decision

URGE QUICK DECISION

WASHINGTON, March 12.—(P)—The supreme court refused today to rule on the validity of government seizure of 16 Montgomery Ward properties.

As its reason for refusing, the court said that the review petition in the case was filed "prior to the judgment of the circuit court of appeals."

This means that the high tribunal refused to rule in the case before the circuit court hears arguments and reaches its decision.

The justice department and Ward asked the high tribunal for a speedy final determination whether President Roosevelt had authority under the War Labor disputes act—or the Constitution—to order the army to take possession of Ward facilities in seven cities.

The U. S. district court in Chicago ruled the seizure was illegal. The department filed an appeal in the seventh federal circuit court, but urged the Supreme court to assume jurisdiction immediately so that argument before the circuit court would be obviated. Ward later joined in requesting the Supreme court to take the case at once.

PORTSMOUTH WINS VICTORY OVER FLOOD

PORTSMOUTH, O., March 12.—(P)—Portsmouth today had won its five-day "battle of the levee"—a 10,000,000 victory.

An estimated 9,000 residents began moving back to their homes and business places as the flood-swollen Ohio river dropped to 60-foot stage, two feet below the top of a section of the flood wall on which citizens and state guardsmen had huddled nearly half a million sandbags to plug up the flood defenses.

City officials estimated that the fight that kept out the raging Ohio had saved as much as \$10,000,000 in damage to industrial, mercantile and residential property.

Mayor John M. Salladay proclaimed an end-to-the-emergency at 6 p. m. yesterday, thus permitting return to normal activity in the downtown area which had been evacuated since Tuesday night. Crest of 64.9 feet was reached Friday.

Hitler Calls For 'Fanatical' Fighting

LONDON, March 12.—(P)—Adolf Hitler, in a grim, phrase-juggling proclamation marking the 10th anniversary of Nazi military conscription, yesterday offered the German people no more than the forlorn hope the Allies will "get tired and yet be broken."

He renewed the Nazi plea of "fanatical resistance" bolstering his appeal with the assertion that the Allies, "drunk by their orgy of victory," were intent on "extermination of the German nation."

The proclamation, broadcast from Berlin, said "the year 1918 will not be repeated," implying that Germany would fight on in guerrilla warfare if her armies were smashed.

Hitler declared that "even if fate turned against us, there can be no doubt that these reverses can be overcome, as so often before, with steadfastness and courage, with endurance and fanaticism."

Superforts Blast Singapore Area

WASHINGTON, March 12.—(P)—Superfortresses hit at industrial targets in the Japanese-held Singapore area today in a daylight raid. A medium-sized force of B-29s struck at factories adjacent to the big naval base at the tip of the Malay peninsula.

The approximately 40 big warplanes carried out their mission from India bases of Brig. Gen. Roger M. Ramey's 20th Bomber command. There was no immediate announcement as to results.

Invasion Of Mindanao Confirmed; Yanks Near San Roque Airfield

MANILA, March 21.—(P)—Tank-equipped Yanks swept over Wolfe airstrip Saturday afternoon one half mile inland from their invasion beach on the southwest tip of Mindanao island and at last reports were driving rapidly toward important San Roque airfield a mile and a half northwest of Zamboanga.

First opposition was light. The Japanese offered Maj. Gen. Jens A. Doe's jungle-seasoned 41st division troops of the Eighth army intermittent machinegun and mortar fire but it did not slow the American advance.

The flight may stiffen near Zamboanga, opined Associated Press correspondent Russell Brines.

An eight day air bombardment by the 13th air force and a two day naval shelling by Vice Adm. Thomas C. Kinkaid's Seventh fleet units preceded the 21st Philippine Island invasion landing.

Zamboanga Harbor, reported AP's Fred Hampson from a bomber's eyewall, was cluttered with wrecked Japanese ships and the town's larger buildings were blasted or burned.

The coastal towns of San Mateo, San Jose, Calarian and San Roque were captured.

Wolfe Airfield, which is 200 miles from Japanese-held oil-rich Borneo Island, was one of the first military objectives of the attack. The San Roque Field, which has a 4,000 foot bomber runway, may already be in U. S. hands.

The convoy in making the 400 mile journey was unmolested by either Japanese plants or submarines.

In announcing the invasion, Gen. Douglas MacArthur said in his communique today that the operation strengthens the American blockade of the South China Sea and further severed Japan from her ill-gotten holdings in the East Indies.

The Americans actually were in Zamboanga City the moment they stepped ashore, for the city proper

See INVASION Page 2

Incendiaries Rained On Nagoya Today

Fires Left Raging Ten Hours In Heart Of Japs' Greatest Warplane Producing Center

21ST BOMBER COMMAND HEADQUARTERS, Guam, March 12.—(P)—Speeding over their targets at only 5,000 feet altitude, 300 giant B-29s poured 2,000 tons of incendiary bombs on Nagoya, Japan's greatest warplane producing center and third largest city, today.

Pilots said they started raging fires which converted a five-square mile area into a hellish inferno and raged unchecked hours afterward. Radio Tokyo admitted the flames burned 10 hours, but claimed they were controlled by 10 a. m.

The first Superfortresses struck Nagoya just after midnight, Tokyo time—barely 48 hours after their record 2,300-ton incendiary raid on a 15-square mile area of Central Tokyo. Fires from Saturday's holocaust still were smoldering in the Japanese capital.

One B-29 was lost over the target in today's raid despite the low level of the attack and the number participating. All other planes returned safely, 21st Bomber Command Headquarters announced.

Some of the first pilots returning from Nagoya said the raid did not appear as destructive as Saturday's devastation of the heart of Tokyo. However, many saw only the

See INCENDIARIES Page 2

WHAT'S DOING

TUESDAY 7:00 p. m.—Regular meeting of Lions club. 7:00 p. m.—Rotary club directors meet at Hotel Charles. 7:30 p. m.—C. A. F. members meet at armory. 7:30 p. m.—Shelby chapter 110, order of the Eastern Star meets at Masonic Temple.



WHERE B-29S STRIKE AT TOKYO—Map locates approximate area in heart of Tokyo where more than 300 Superfortresses laid waste to 15 square miles in a raid described unofficially by some officers as the most devastating air blow ever dealt any city.

ADDITIONAL FORCES MAKING WAY ACROSS

Security Dimout On New Evidently Put On Remagen Area

BRIDGE BOMBARDED

PARIS, March 12.—(P)—German broadcasts said that four first army divisions of more than 40,000 troops had widened the Rhine bridgehead today to more than twelve and a half miles.

Slowly but steadily, streams of American arms flooded across the Rhine—much of it by the shell-raked Ludendorff bridge at Remagen and some by assault boat—in a race against German artillery still trying night and day to break the span which put the allies onto one of the main roads to the Ruhr.

It became increasingly apparent in the paucity of details on cross-Rhine operations that the Allied command had clapped on a security dimout. This in itself underscored the importance of the position.

Tank and foot troops won a few hundred more yards of high ground inland from the three-mile wide bridgehead jutting into inner Germany within 274 miles of Berlin.

This squeezed the Germans back from any possible direct observation of fire on the Ludendorff bridge. Lt. General Courtney H. Hodges crossed the bridge by jeep yesterday and one German shell landed within 50 feet of the First army commander. He spent an hour east of the Rhine. German heavy and medium guns still were firing methodically in an attempt to score a knockout hit.

Berlin broadcasts said two tank and two infantry divisions were deployed east of the Rhine between Honef, 44 miles southeast of the Ruhr capital of Dusseldorf, and Hoenningen.

BRITISH DRIVE The enemy likewise said a large scale British offensive to cross the lower Rhine was imminent. Increased artillery and reconnaissance were noted in the 40 miles of smoke screened country between Emmerich and Nijmegen.

It was not likely that at this stage of the operation Hodges still

See ADDITIONAL Page 2

Enemy Still Entrenched On Tip Of Iwo

ABOARD VICE ADM. RICHARD K. TURNER'S EXPEDITIONARY FORCE FLAGSHIP OFF IWO JIMA, March 12.—(P)—Battle weary Marines brought up tanks, flamethrowers and demolition units today for what may be the final assault on a long high butte in the northeastern tip of Iwo Jima where the major force of the surviving Japanese are still entrenched.

The many caves which spot the cliffs could conceal several thousand if that many survived the long battle.

After 22 days of the most bitter fighting in Marine history, the Japanese have been driven into a rugged area which roughly is about one mile deep and takes in two miles of coastline. A small pocket also remains to be cleaned up on the northeast sector but for all practical purposes the entire east coast is now held by Americans.

NAVAL SUPPORT With the support of heavy artillery and naval gunfire, Marines Sunday pushed slowly to the vicinity of the high butte where possibly the largest remaining force of Japanese is holed up for the final stand.

That the Japanese still have heavy weapons was shown the night before when shells or rockets landed all the way from the central airfield to beyond Suribachi crater.

Some of the heavy guns are believed to have been knocked out after they were spotted by an artillery observation post.

Many snipers are still working behind Marine lines.