

Tryon Daily Bulletin, Fri., Oct. 31, 1980

Tryon Girls Play In Sectional

The Tryon Girls' Tennis Team played in the 1980 Girls' NCHSAA Sectional at Shelby on Wednesday. Denise Radford drew a bye in the first round and faced the number one seed, Betsy Short of Ashbrook, in the second round. Radford was defeated 6-0, 6-2. Short advanced to the third round defeating her next opponent from Shelby 6-0, 6-0. Sherrie Miller took the first round by forfeit from Resa Ruff of Chase. Sherrie's second round was a three set match with Kelly Harrell, the number 4 seed from Shelby High. Harrell won 6-4, 7-6 (5-3 tiebreaker). Pam Scoggins met a tough opponent from Shelby High in the first round. Michele Smith defeated Scoggins 6-0, 6-0. Smith also defeated her second round opponent 6-0, 6-0. Smith was then defeated in the

third round by the tournament's number three seed from Ashbrook. Eileen Teal drew a first round bye and met Shelley Wilzke from South Point in the second round. Teal defeated Wilzke 6-1, 6-1. Teal then met the tournament's number 5 seed from Ashbrook, Rhett Ellerbe. Ellerbe defeated Teal 6-0, 6-0. Pam Flynn and Sandy Pruiette entered the doubles tournament. Their draw was very unlucky as was Radford's. They received a first round bye and played the number 2 seeds, Humphries and Witherspoon from Kings Mountain. The Kings Mountain team won 7-5, 6-2. Humphries and Witherspoon then advanced to the semi-finals by winning an easier third round match over their Hunter Huss opponents 6-1, 6-1. The last two rounds of doubles play and the last three rounds of singles play was on Thursday. Seventeen teams made up the Shelby Sectional.

LWV To Continue County Study

The continuing study on county commissioners for members of the Tryon-Polk County League of Women Voters will be held at 10:00 o'clock, Wednesday, November 5th at the Congregational Church. Mrs. Ruth Tremaine will lead the discussion on inter-local cooperation among various departments and county

government. All members are urged to attend. — Reporter

John Madison Randolph, grandson of Thomas Jefferson, was the first baby born in the White House.

BROWN OIL CO. INC.

EXXON

Complete Products
Home Heating Oil 457-2507
135 N. Howard St., Landrum

Impressions . . . leave them everywhere you go in our sensational new separates from John Meyer.

The Aug. W. Smith Co

Spartanburg, S. C.

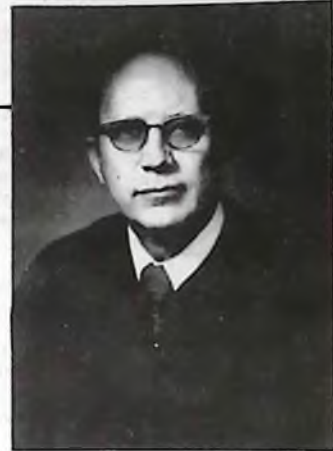
Cannon Roofing Co.

325 Kennedy St.
Spartanburg, S. C.
Free Estimates
Call 583-6045

LUNCH PLATE SPECIALS

DAILY \$2.50 plus tax
with free tea, coffee or
lemonade

DAIRY BARN
457-4581



Judge Robert Gash

- ... was graduated from UNC Law School
- ... was licensed and practiced law
- ... was elected District Court Judge three times
- ... was appointed Chief Judge for five counties
- ... was elected president of all District Court Judges
- ... was elected chairman of all Chief Judges
- ... has been specially assigned by the Chief Justice to serve in many areas of the state
- ... has experience not only as a trial judge but also as court administrator

**IS the ONLY candidate
for his seat on the bench
with ANY
of the above qualifications**

Re-Elect Judge Robert Gash

Democrat

29th Judicial District - Henderson, McDowell, Polk,
Rutherford and Transylvania Counties

Pd. Pol. Adv. by Com. to Re-elect Judge Gash, Charles W. Glazener, Treas.



**Save
25%-33%**

- Fabulous savings
- All new fall fashions
- Famous Burlington House

Our special purchase of top quality, beautifully styled Burlington House Carpet means special windfall values for you. You'll love our selection. These are best selling carpets in quality constructions and over 50 exciting colors. This is our special sale and time is limited, so come in while the full selection lasts.

Special Sale Values

Kathie Delight. Rich, Loom-Crafted texture. A carpet fashion that's brand new. Pile yarns are soil-resistant Antron® III by DuPont. **Sale \$12⁰⁰ sq. yd.**

Corbana. Practical, sturdy, scuffed texture in long-wearing nylon by DuPont. Deep, sparkling colors are from Burlington's ChromaTouch Color-Setting System. **Sale \$9⁰⁰ sq. yd.**

Arisea. Outstanding value in a classic. Saxony plush. Elegant good looks plus soil-resistant, static-protected Antron® III pile yarns. **Sale \$10⁰⁰ sq. yd.**

Silk Charter. Outstanding value in a classic velvet plush texture. Elegant and refined look in resilient Dacron® by DuPont. **Sale \$11⁰⁰ sq. yd.**

Tenne Sours. Rich, luxurious plush carpet at our very affordable special price. Burlington's LustralSet finish brings out all the natural beauty of the nylon yarns. **Sale \$9⁰⁰ sq. yd.**

**Now On Sale!
PAINT 'n PAPER, Etc.**

Landrum, S. C. 457-4897