

Window World Offers Decor For Shoppers

by Sharyn Bratcher Staff Writer

"Besides a woman's clothes, there is nothing more personal to her than the furnishings of her home," says Lois Jacobs.

Because decor is so important to a woman, Mrs. Jacobs believes in giving her all the time she wants to make a decision.

Her new shop Window World, located on the lower level at Thruway Shopping Center, radiates a warm and friendly atmosphere, inviting browse to their heart's content.

"Sometimes we put all the decorating books in the floor, and we sit down in the middle of the, and look through patterns," smiles Mrs. Jacobs.

This relaxed and hospitable way of dealing with customers is an indication of why Mrs. Jacobs decided to open her business in Winston-Salem. She had worked most of her life in New York, as a buyer for a chain of department

stores, but the fast pace of city life finally persuaded her to leave.

It isn't a nice place to live any more, she decided, when coming home from work she had to sit in her car in the driveway for a few minute and watch the house for signs of an intruder before venturing in.

In her new business, Mrs. Jacobs is putting to good use all the expertise she learned as a buyer. She will advise her customers on how to deal with decorating problems, like small windows, but she will not choose the decor. That is too personal a decision for anyone else to make, she says.

What she does offer is stacks of drapery samples, and all the time you want to decide. Then Window World places the order, and the drapes are delivered, custom-make to your window specifications. They can even send a workman to your home to help you hang them up. You can tell a lot about

a person from the type of material they select. Mrs. Jacobs noted.

Indeed she can. We selected a pattern similar to one we had seen in the home of an antique-lover. "What type of woman would choose this?" we asked.

Mrs. Jacobs considered a moment. "Oh...she like traditional things. Antique or early American. Nothing too bright or daring."

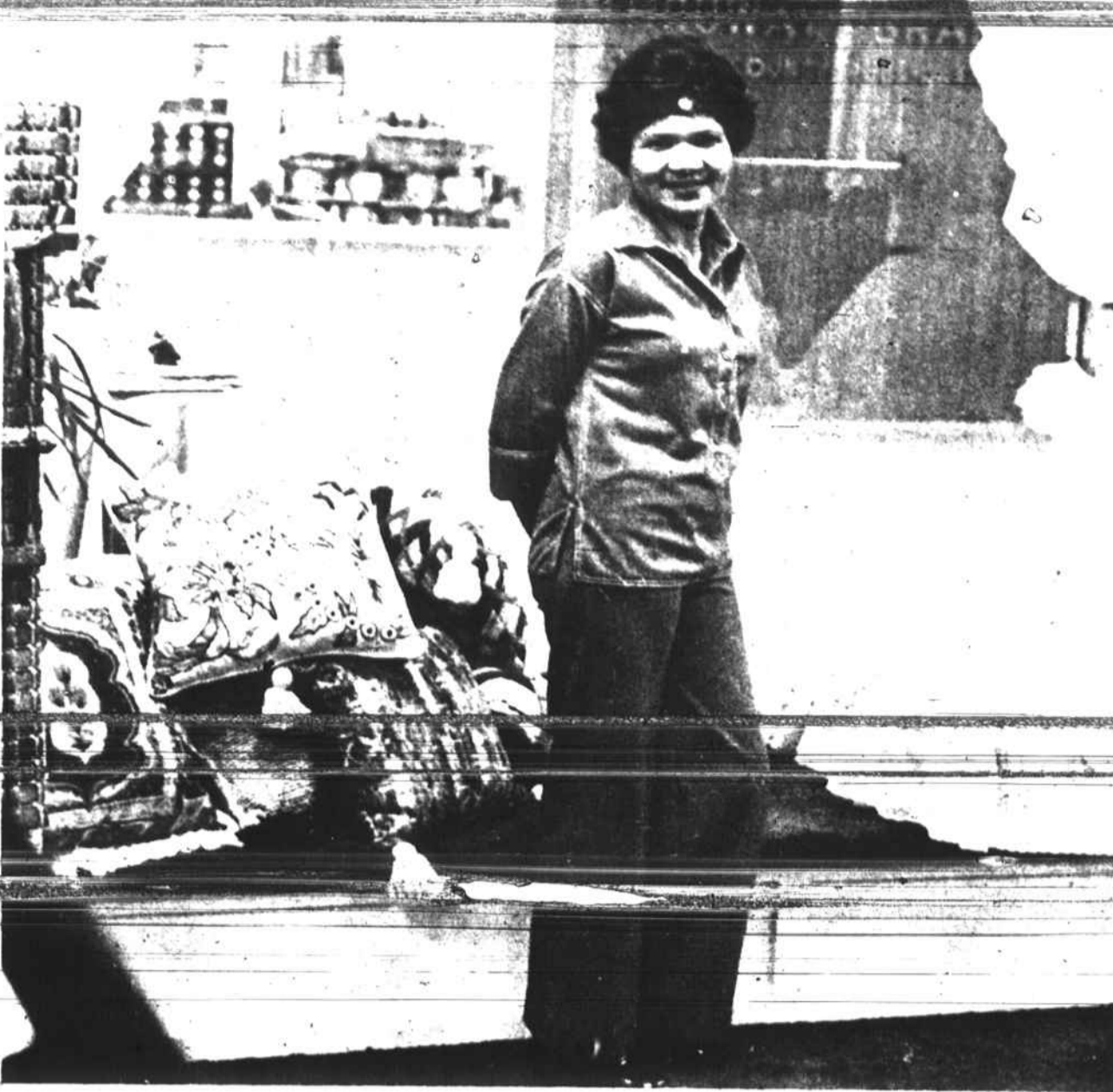
Her description was perfect.

The most innovative design is woven woods, she told us. Woven woods are a type of "Roman shade" which have yarns of contrasting colors woven into them.

"Woven woods are very popular now," she said.

Besides woven woods, Window World offers a large selection of curtains, drapes, sheers, even venetian blinds. It also offers its customers time to consider all the possibilities...all the time they want.

The view from Window World is one of unhurried helpfulness and hospitality, thanks to its gracious proprietor Lois Jacobs.



NEW INTRODUCTORY OFFER
 TRY THESE AMAZING FORMULAS FOR TEMPORARY RELIEF OF MINOR PAINS OF

ARTHRITIS RHEUMATISM

Money Back Guarantee

ARTH *R* SPRAY 6 OZ SPRAY **\$2.88** \$3.50 Value
 ARTH *R* TABS 50 TABLETS **\$1.88** \$2.50 Value

Model Pharmacy
 1225 E. 5th Street

E.H. PETREE CO

We Wash & Dye Lamp Shades
 Lamp Supplies & Fixtures
 Specializing In Restoring
 Antique Lamps & Fixtures

1145 Burke St.
 722-0122

Model Railroaders To Convene In Greensboro

Carolina Model Railroaders of Greensboro, N.C., has announced its third annual open house for the next two weekends: Saturday, Nov. 19, and Saturday, Nov. 26, from 10:00 a.m. until 5:00 p.m. in the Southern Railway Passenger Terminal, East Washington St., downtown Greensboro. The public is invited to see in operation the largest HO gauge model railroad in North Carolina, plus exhibits to include model locomotives, cars, structures, and an N-scale railroad which is even smaller than the HO scale in proportion to the prototype.

Organized in 1973, CMR has about 50 members--all adults--who began construction of the Club's Carolina Midland Railway ("Near or Far--Ship CMR") in the Southern Terminal in June, 1975. This month's show will feature 450 ft. of main line track, many siding, 95 track switches (most hand built by club members),

and realistic scenery, mountains, tunnels, structures, lakes, and rivers. The giant layout is 40 ft. in length and 17 ft. in width, and on its tracks the freight and passenger trains run from the mountains of Ridgecrest (and nearby Possum Trot) to the plains of Wentworth. Trains stop at the small town of Phare, then highball for the big city of Midland--which means that the Carolina Midland is the only railroad in the world to run from Phare to Midland!

In addition, visitors will see operations of the O.L. King Coal Mine, where tiny lumps of coal are loaded for transportation to the Newcastle Power Plant and other destinations. (CMR carries coal to Newcastle!)

In addition to the featured layout and exhibits, the members of CMR have built a 4 ft. by 8 ft. HO layout, complete with scenery, which will be given away as a doorprize (no charge for registra-

tion). A second door prize is a complete train set with power pack, track, and kits for buildings to complement the locomotive and cars which are included. The drawing for doorprizes is scheduled for 5:00 p.m. on November 26. Winners do not have to be present to win.


There is no admission fee for this event, although donations are gladly received by the Club which rents its space from Southern Railway.

Arthritis Sufferers:

WAKE UP WITHOUT ALL THAT STIFFNESS!

New formula for arthritis minor pain is so strong you can take it less often and still wake up in the morning without all the pain's stiffness. Yet so gentle you can take this tablet on an empty stomach. It's called *Arthritis Pain Formula*. Get hours of relief. Ask for *Arthritis Pain Formula*, by the makers of *Anacin* analgesic tablets.

Winston-Salem State University Lyseum Series
 Presents



The Charlotte Symphony Orchestra
 with guest pianist

MISHA DICHTER
 IN CONCERT
 Thursday, December 1

Kenneth R. Williams Auditorium- 8:00 p.m.

Admission: Lyseum Season Ticket or Single Tickets at Door
 Adults- \$3.00 Senior Citizens or Students with I.D. - \$1.50

The Charlotte Symphony Orchestra
 with guest pianist

MISHA DICHTER
 IN CONCERT
 Thursday, December 1

Kenneth R. Williams Auditorium- 8:00 p.m.

Admission: Lyseum Season Ticket or Single Tickets at Door
 Adults- \$3.00 Senior Citizens or Students with I.D. - \$1.50

Paint & Paneling

1/4" x 4' x 8' Decorator Pecan Or Wellington Walnut Paneling



Both of these dark brown paneling styles are well suited to the more formal rooms in your home. Wellington-Walnut is a deep, dark brown and Decorator Pecan is highlighted by traces of lighter brown. Simulated wood grains on lauan. #13943.4

\$7.99 Per Panel *Your Choice!*

1/4" x 4' x 8' Royal Pine Wall Paneling

\$6.99 Per Panel *You Save \$2.00*

Royal Pine is a rich, rusty brown, shot through with shades of lighter brown. Has a simulated woodgrain on lauan plywood. #13939

5/32" x 4' x 8' Autumn Oak Wall Paneling

\$3.29 Per Panel

A truly versatile medium brown paneling style. Has a simulated woodgrain on wood composition board. #13867

Assorted Pre-Finished Moulding

Prices Start At **10¢** Per Foot

Add the "finishing touch" to your newly paneled room with pre-finished moulding in colors to match your paneling. #01400

DAP 3M

Dap Panel-Nu 13 oz. Spray **\$1.69** Ea. #41402

Safety-Walk Anti-Slip Tape **\$2.99** #40043 2 x 120 INCHES

Paintable Silicone Caulk **\$2.89** #40078 11 Oz Tube

Fast Drying Instant Spray Paint

\$1.19 Per 13 oz. Can *Love's Low Price!*

Ideal for wicker, wrought iron, toys, etc. Contains a special rust preventative. Indoors or out. #48119-40

Interior And Exterior Penetrating Oil Wood Stain

Enterprise **PENETRATING OIL WOOD STAIN** INTERIOR/EXTERIOR

Adds semi-transparent flat color to unfinished or previously stained wood. It's ideal for use on floors, doors, woodwork, and furniture. Comes in attractive colors to match your paneling. Penetrates the wood to help protect as it beautifies. Use indoors or out. #48426-32

\$2.89 Per Quart *You Save \$1.00*

Latex Flat Ceiling White

\$6.99 Per Gal. *You Save \$3.00!*

Warranted to cover in one coat. Minimizes ceiling defects and resists yellowing. #47612

Sanding Kit With Block And Paper

3M #40770 **\$1.59** Per Kit

LOWE'S

Convenient Locations • Store Front Parking

115 S. STRATFORD ROAD
 OPEN 8 to 8 Mon & Fri, Tues
 Wed, Thurs 11:30 Sat 11:4
 Phone 722-9112

3740 N. LIBERTY STREET
 Mon-Fri 8:50 Sat 8:4
 Phone 767-4950