



THE BEEF PEOPLE

THE IDEAL GIFT

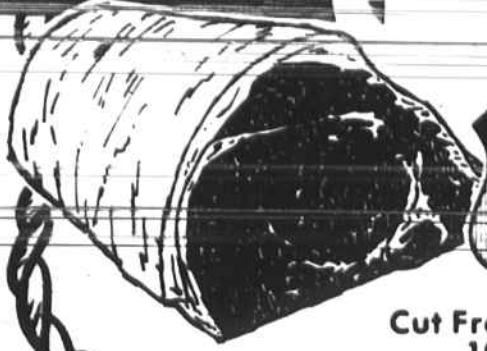
WE SELL ONLY U.S. CHOICE BEEF...

All Winn-Dixie steaks and roasts bear the U.S. Choice label of quality. You will find each cut plainly marked W-D Brand U.S.D.A. Choice... your assurance that you buy only the very best. This mark of quality is readily apparent in the fine marbling of rich, even textured grain which promises extra flavor and tenderness.

FOR YOUR CUSTOMERS, EMPLOYEES, FRIENDS



OUR GIFT CERTIFICATES ARE AVAILABLE AND REDEEMABLE AT ALL WINN-DIXIE STORES ACROSS THE SUNBELT.



Cut Free Into Roast, Steaks and Trimmings... 10¢ Charge Per Pound For Cubing



U.S.D.A. CHOICE UNTRIMMED
**WHOLE BONELESS
ROUND TIPS**

\$1.68
9/11 LB. AVG.

Produce Patch

PURE GROUND BEEF
W-D BRAND

HANDI-PAK GROUND BEEF

5 LB. PKG. OR 10 LB. PKG. **\$1.18**

HOLLY FARMS FRYER BREAST

U.S.D.A. "A" GRADE

\$0.98

100% PURE **FLORIDA GOLD ORANGE JUICE**

HALF GAL. **\$0.89**

10 LB. BAG U.S. NO. 1 **WHITE POTATOES**

\$1.39

HARVEST FRESH GREEN **CABBAGE** ... LB. **15¢**

HARVEST FRESH WESTERN HONEYDEWS

JUMBO SIZE **\$1.29**

HARVEST FRESH COUNTRY STAND **MUSHROOMS** ... 16 OZ. PKG. **\$1.09**

HARVEST FRESH SEEDLESS WHITE GRAPES

LB. **79¢**

HARVEST FRESH NEW CROP RED **POTATOES** ... 5 LB. BAG **99¢**

HARVEST FRESH SWEET YELLOW CORN

10 LARGE EARS **\$1.29**



U.S.D.A. GRADE A **W-D BRAND YOUNG TURKEYS**

10-24 LB. AVG. **\$68**

W-D BRAND U.S.D.A. GRADE A 10-20 LB. AVG. REDI-BASTED YOUNG **TURKEYS** ... LB. **78¢**

PINKY PIG BRAND FRESH BONELESS BOSTON BUTT **PORK ROAST** ... LB. **\$1.29**

PINKY PIG BRAND FRESH BONE-IN **PORK STEAKS** ... LB. **\$1.29**

SUPERBRAND LARGE WHITE EGGS

GRADE A DOZ. **69¢**

PINKY PIG BRAND FRESH BONE-IN BOSTON BUTT **PORK ROAST** ... LB. **\$1.19**

W-D BRAND U.S. CHOICE BONELESS ROUND TIP **ROAST** ... LB. **\$2.38**

W-D BRAND U.S. CHOICE BONELESS ROUND TIP **STEAK** ... LB. **\$2.48**

W-D BRAND U.S. CHOICE BONELESS TOP **SIRLOIN STEAK** ... LB. **\$3.48**

Southern Pride CUBE STEAK

U.S. CHOICE

\$2.88

PALMETTO FARMS PIMENTO **CHEESE** ... 16 OZ. CUP **\$1.49**

SUPERBRAND ORANGE, STRAWBERRY, PEACH OR CHERRY VANILLA **YOGURT** ... 5 OZ. CUPS **59¢**

SUPERBRAND **SOUR CREAM** ... 16 OZ. CUP **69¢**

SUPERBRAND BUTTERMILK OR SWEET MILK **BISCUITS** ... 6 CT. PKG. **99¢**

SUPERBRAND SINGLE SLICED **CHEESE** ... 12 OZ. PKG. **\$1.29**

FILL YOUR FREEZER BEEF SALE!

W-D BRAND U.S. CHOICE 160/190 LB. AVG. WHOLE BEEF **FORE QUARTERS** LB. **\$1.29**

W-D BRAND U.S. CHOICE 140/170 LB. AVG. WHOLE BEEF **HIND-QUARTERS** LB. **\$1.49**

W-D BRAND U.S. CHOICE 40/50 LB. AVG. **WHOLE BEEF LOINS** LB. **\$2.69**

W-D BRAND U.S. CHOICE 30/40 LB. AVG. WHOLE BONELESS **BEEF ROUNDS** LB. **\$2.39**

W-D BRAND U.S. CHOICE 10 IN. CUT 30/35 LB. AVG. **WHOLE BEEF RIBS** LB. **\$1.69**

Cut free into steaks, roast, trimmings fat and bones... Allow 10 day processing time. All T-Bones, Sirloin and Rib Eye steak cut 3/4-1 inch thick. All round steak cut 1/2 inch thick. All roast 3-3 1/2 lb. avg. All stew 2 lb. avg. All ground beef 1 lb. avg.

IF YOU'RE NOT SATISFIED, NEITHER ARE WE!

SATISFACTION GUARANTEED

THAT'S OUR POLICY!

Store Brands- A wide variety of high quality at a low price that you will be proud to serve your family.

Weekly Specials- Different specials every week on items you use most often. Spectacular savings!

General Merchandise

EXTRA-STRENGTH **TYLENOL CAPSULES** 50 CT. PKG. **\$2.59** SAVE 70¢

ALKA SELTZER 25 CT. PKG. **\$1.15** SAVE 38¢

12 OZ. BTL. **PEPTO BISMOL** **\$1.89** SAVE 60¢

4 OZ. TUBE \$1.59 **HOPPE'S HEAD & SHOULDERS CONDITIONER OR SHAMPOO** 7 OZ. BTL. **\$1.59** SAVE 50¢

12 OZ. BTL. LIQUID GERITOL OR **GERITOL TABLETS** 40 CT. PKG. **\$3.79**

SAVE 20¢ **LOONEY TUNES TOOTH PASTE** 2.7 OZ. TUBE **69¢**

HARVEST FRESH SWEET YELLOW CORN

10 LARGE EARS **\$1.29**

AIRLINE
From page 22

4. A Prepaid Ticket. If you want to pay for a ticket for someone in another city, you can arrange this by calling a travel or airline reservation agent. Either will set up a ticket by billing you for its cost. The other person can pick up the ticket in the other city. You will need a credit card number, name and address, the name of the person receiving the ticket. If you don't have a credit card, you will have to buy the ticket in person at a travel agency or at the airline ticket office.

5. Write Your Own Ticket. Some airlines let you fill out your own ticket and validate it at the airport. You are given a number of tickets; you simply fill them in with the correct data (destination, time, flight numbers, etc.). One very important point, advises the Better Business Bureau, is to read the ticket carefully and know its restrictions. This is especially important on "discount fares." These special tickets usually have a time restriction on any changes; other airlines to which you want to connect and travel might not offer or accept the same discount fare and other arrangements.

Airline Terminology

What you think you are buying may not be what you are receiving. Here are several tips on flight terminology.

Non-Stop. The airplane makes no enroute stops from the time you get on until the time you get off the aircraft.

Direct Flight. The trip does not involve a change in aircraft. It can, however, involve one or more enroute stops.

Open Return/Open Segment. You know when and where you are going, but you don't know the return date. This happens lots with business travelers who buy a round trip ticket. The return segment of the ticket is then left "open."

Adult. If you are 12 years old or older you are an "adult" in the eyes of the airline.

Child/Infant. A person between 2 and 11 years old is considered by the airlines to be a "child." If the person is under 2 years old, the person is classed as an "infant." These classifications can affect fares.

Baggage. Tag the handle of the bag with your name, address, and telephone number. Also tag the inside of the bag with the same information. Outside tags can be ripped off during luggage handling. If the value of your luggage exceeds the maximum \$750.00 per passenger excess value declare this to the airline. At the present time, the airline's liability is \$750.00 per passenger for domestic flights and \$9.07 per kilogram for overseas flights up to a maximum of \$635.00.

Connections. This can involve the transfer of you and your luggage from one flight to another flight on the same airline. It also can involve going from one airline to another airline.

Give yourself at least 1 hour time between connections with different airlines in the same airport.

Open Jaw. This is a trip by airplane that basically is a circle trip. One portion of the trip, however, is not traveled in an airplane.

Round Trip. A ticket from one city to another city via the same airline, class of service, and connecting points in each direction.

Thruway Shopping Center
Monday-Saturday 8:00 to 9:00
Sunday 12:00 to 7:00

Pine Brook Plaza Shopping Center
Monday-Saturday 8:00 to 9:00
Sunday 12:00 to 7:00

Parkview Mall
Monday - Wednesday 8:00 to 9:00
Thursday - Saturday 8:00 to 10:00
Sunday 1:00 to 7:00

3 Oaks Plaza
811 Merita Street Mt. Airy
Monday-Saturday 8:00 to 9:00
Sunday 10:00 to 7:00

Walkertown Shopping Center
Monday-Saturday 8:00 to 10:00
Sunday 1:00 to 7:00

Westwood Village Shopping Center
CLEMMONS
Monday - Wednesday 8:00 to 9:00
Thursday 8:00 to 10:00
Friday - Saturday 8 to 11
Sunday 1:00 to 7:00

U.S. HWY. 21 & Old CCC Camp Road
ELKIN, N.C.
Monday-Saturday 8:00 to 9:00
Sunday 12:00 to 7:00