

Terry

From Page A1

"I suspect it will not have a significant impact on the number of persons who support me," she said. "FACT members have called me and said they would support me despite the fact that I didn't get the endorsement."

Initially, Terry said, she had an "anxiety attack" over not receiving the endorsement, but when her phone started "ringing off the hook" with calls from teachers supporting her, she said, the attack passed.

"I know people are gonna vote for me anyway," she said.

Terry said she was told she didn't get the FACT endorsement because she is "not pro-education."

"I don't know what that means," Terry said. "I've worked in education and it has been a part of my life."

Anderson said FACT based its primary endorsements on interviews with each of the candidates. The endorsements for the general election, said Anderson, were determined by whether

those candidates had continued to support the causes they promised to work for during their primary campaigns.

Anderson said he and fellow FACT members have attended candidates forums and monitored the candidates in different settings with different audiences.

During the primary, Terry was the second highest vote-getter behind incumbent John Wood in the school board race, receiving support from both predominantly black and predominantly white precincts.

FACT also chose not to endorse Neal Beddinger, a Democratic candidate for county commissioner whom it had endorsed in the primary. That decision was based on his past record as a commissioner, as well as the fact that "he was also not a great participant in a lot of the forums," Anderson said.

The FACT endorsements include:

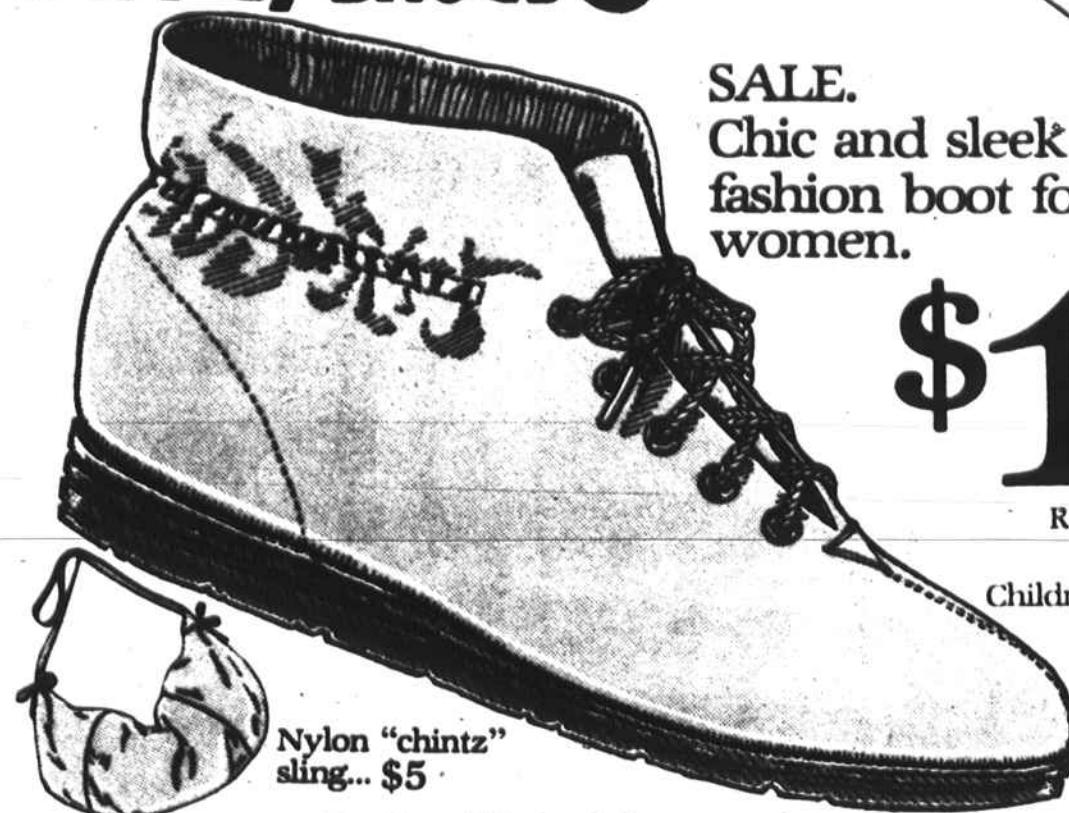
- for state Senate: Democrats Marvin Ward and Ted Kaplan.

- for state House of Representatives, Democrats R. J. Childress, Margaret Tennille and Tom C. Womble, all incumbents from the 39th District; Annie Brown Kennedy, who has no opposition in the newly-created 66th District, and Dr. C.B. Hauser in the newly-created 67th District.

- for county commissioner, Democrats Mose' Belton Brown, James N. Ziglar Jr. and Forrest Conrad, and Mabel Holton in the special county commissioner election to fill the vacancy created by the death of Fred Hauser.

- for board of education, Democrats Tatum, Grace Efrid and John Wood and Republican Garlene Grögan.

Pic 'n Pay Shoes®



SALE.
Chic and sleek
fashion boot for
women.

\$12

Reg. \$16.97

Children's sizes...\$9

Nylon "chintz"
sling... \$5

Shop these Winston-Salem area stores...

1. East Winston Shopping Center, 570 Claremont Avenue
2. 2853 North Liberty Street
3. Lohmann's Plaza, 3814 Reynolds Rd.
4. 2942 Waughtown Street

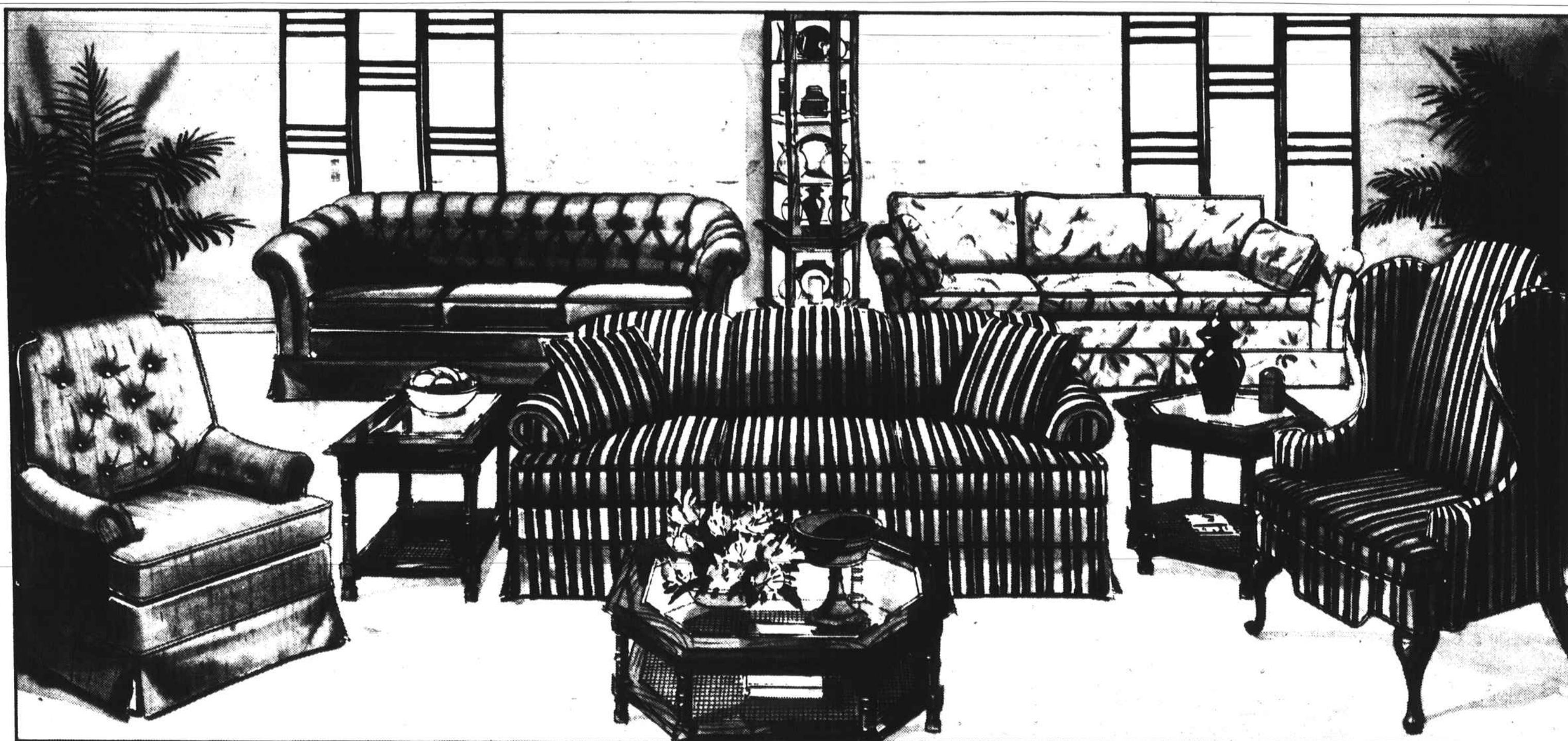
5. K-Mart Plaza, 2870 Peters Creek Parkway
6. 825 South Main St., Lexington
7. K-Mart Shpg. Ctr., Lexington

...and Pic'n Pay stores everywhere.

Sale prices good thru Sun. MasterCard, Visa or Choice. Open evenings 6p open Sun. 1-6pm.

Home Show and Sale

Great savings on classic designs for contemporary living.



\$200 off sofa

Our Coventry Gallery Collection

Our Coventry Gallery Collection of sofas, loveseats and chairs. In elegant fabrics that coordinate.

	Reg.	Sale
Sofa	\$799	\$599
Wing chair	\$459	\$359
Club chair	\$429	\$329
Pecan finished wood accents:		
End tables	\$179 ea	\$139
Cocktail table	\$269	\$199
Curio	\$249	\$199

Oak wall system.

Country-style wall units of oak solids and veneers.

	Reg.	Sale
Drop-lid unit	\$619	\$515
Door unit	\$530	\$444
China/curio	\$650	\$540
Corner unit	\$399	\$329

\$150 to \$400 off

All recliners

Sale \$399 Reg. \$549. Here's a sample of what's in store! Handle-operated recliner in polyester velvet.
Sale \$349 Reg. \$749. Leather Tyme™ recliner of leather and vinyl.
Other styles also on sale.

Sale prices on regularly priced merchandise effective through Saturday.



JCPenney

Winston-Salem, Hanes Mall 768-2510