

# People On The Move

From Page A8

Professional Secretaries International is the world's first and foremost association for secretaries. The association strongly encourages professionalism and continuing education in the secretarial career.

Charles E. Williams III has been named manager of the North Patterson office of Wachovia Bank and Trust. He replaces Craig M. Goodson, who is joining the bank's Bond and Money Market Group as a general bond salesman.

Williams, a native of Winston-Salem, is a graduate of Campbell University. He joined Wachovia in 1981 as a field representative in sales finance and most recently has served as personal banker-branch operations manager at the Parkway office.

Goodson joined Wachovia in 1981 and later that year became personal banker at the Country Club office. He transferred to the North Patterson office in 1982. He is a native of Winston-Salem

and a graduate of the University of North Carolina at Charlotte.

Williams has been replaced at the Parkway office by Roger F. Plott, who had been a personal banker at Wachovia's main office downtown. A native of Jamestown, Plott joined Wachovia in June 1983 following his graduation from Appalachian State University.

Dr. Carol W. Williams, a 20-year social work veteran, has been appointed director of programs in the National Child Welfare Leadership Center in the School of Social Work at the University of North Carolina at Chapel Hill.

Williams, who also serves as an assistant professor in the School of Social Work, joined the center Nov. 1. Her duties include designing programs to train child welfare administrators in management procedures.

"Dr. Williams brings a perspective in the child welfare field that very few people have, in

terms of her hands on experience with children's services and her experience in designing and implementing training programs," said John Turner, dean of the School of Social Work.

Williams said her goals include training administrators to be more innovative in service delivery through such processes as forecasting, strategic planning and working assertively in the socio-political environment.

The executive training opportunities of the center include a Senior Executive Program for chief administrators, as well as the Children's Services Leadership Program for managers of agencies. This year, a national symposium on improving services to minority children will be coordinated by Williams.

Previously an assistant professor at UCLA, Williams spent the past summer as a consultant to the National Child Welfare Leadership Center collaborating in the development of curriculum

and training of social work administrators from 20 states. The training goals included the enhancement of leadership skills and better use of management tools to insure that social work services are of high quality.

Williams spent 12 years in probation and child welfare work before becoming associate director of the Adoption Training Project at the University of Southern California in 1976. Her areas of expertise include child welfare policy, methods and organizational theory.

The National Child Welfare Leadership Center is a unit of the UNC-CH School of Social Work. The center provides training, consultation and technical assistance for child welfare administrators and managers to improve the quality of services for children and their families.

Conrad's Hair Design has added Denise Hill and Pamela McKoy to its staff of hair designers.

Hill comes to Conrad's with experience in all aspects of hair design. She trained at Leon's in Greensboro.

McKoy comes to Conrad's from Beauty World, where she gained experience in all aspects of hair design.

Clara Peay has joined Beauty World as the newest member of its staff.

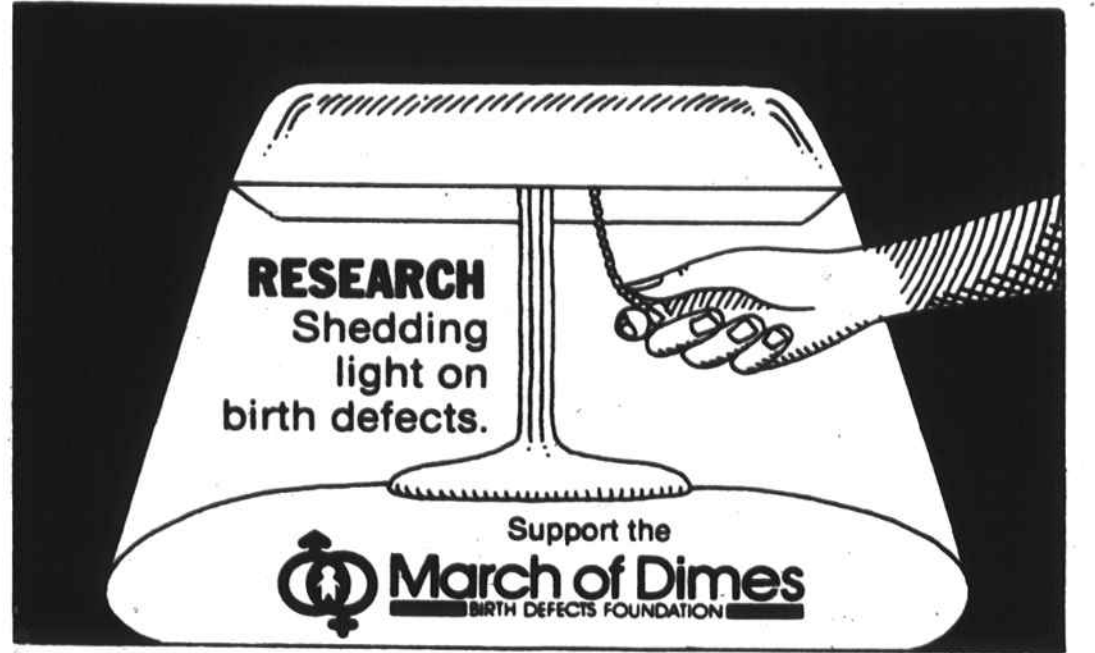
She is the wife of the pastor at Reynolds Temple CME Church.

She comes to Conrad's from Lynchburg, Va., with experience in hair design.

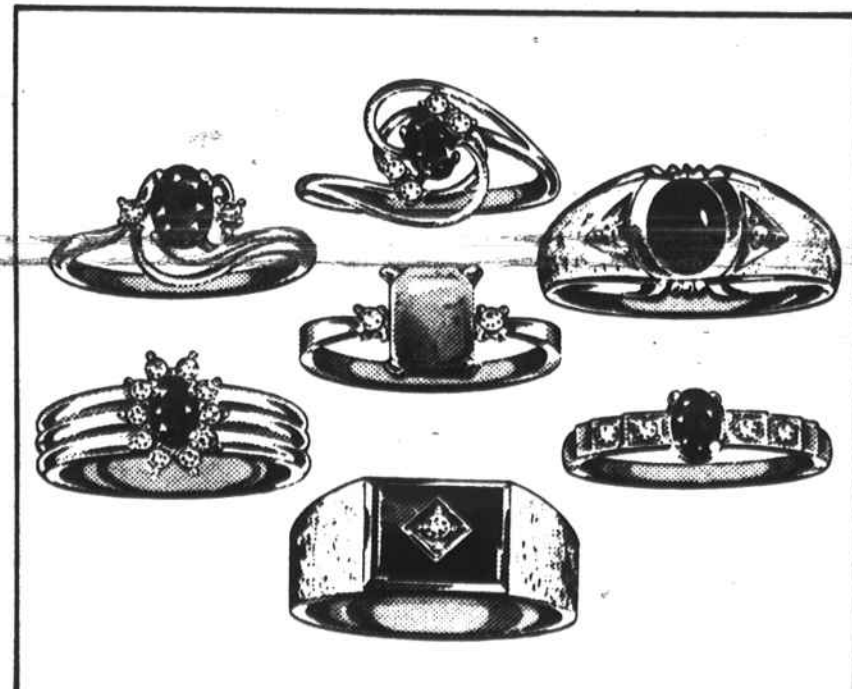
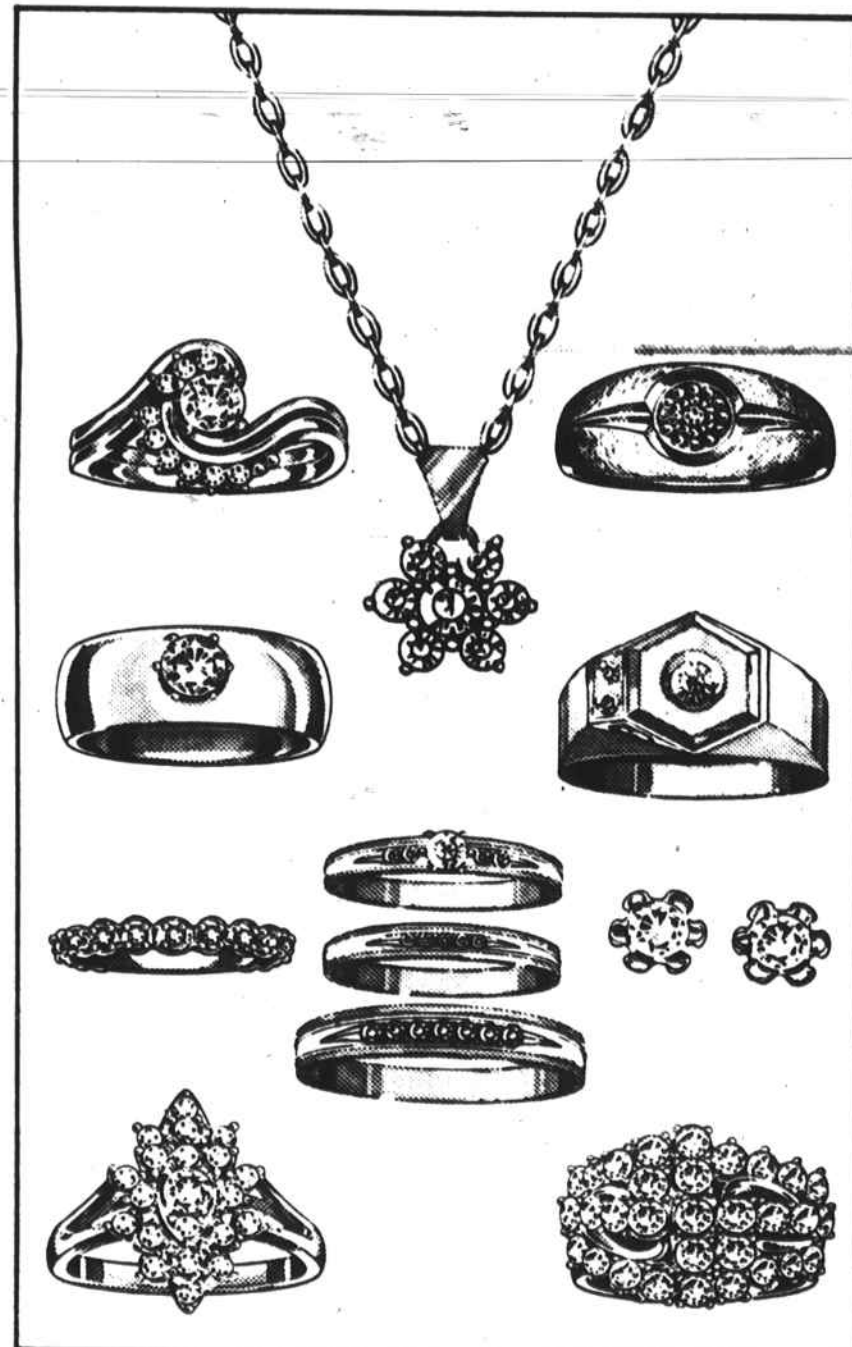
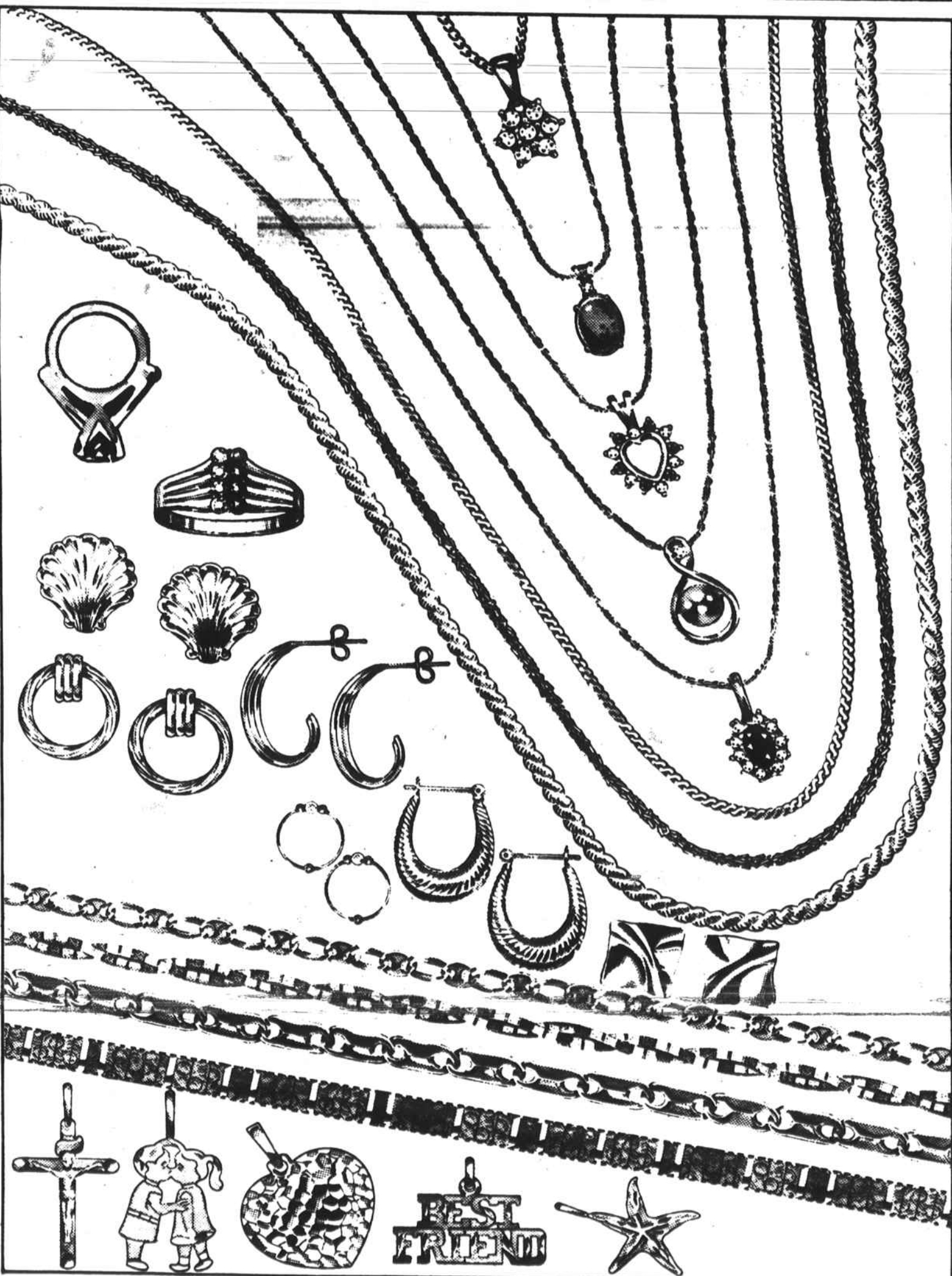
The newest hair salon in the Ogburn Station Shopping Center, Metro Beauty-Rama, has added to its staff hairdesigners Rudy Perry and Darel Jones.

Perry specializes in curls, colors and hair restructuring.

Jones specializes in cuts and conditioning of the hair.



# Sparkle Sale



**40% to 50% off 14K jewelry.**

The radiating glow of 14K gold. Choose classic or up-to-the-minute earrings, charms and chains, plus sparkling pendants set with gems.

**30% to 50% off Diamond jewelry.**

Sale \$251.30 to \$1775 Orig. \$359 to \$3550. Glittering diamonds, enhanced by settings of gleaming 10K or 14K gold. Choose from a selection of diamond rings, earrings, and pendants. Men's rings, too. Includes only that jewelry where diamonds constitute the greatest value.

**25% off Stone rings.**

Stone rings: Opulent opals. Shimmering sapphires. Exotic rubies, cultured pearls and more. All set in 10K or 14K gold. 40% off all 14K Cubic Zirconia rings.

Percentage off represents savings on regular prices and original prices. Available only at JCPenney stores with Fine Jewelry Departments.

**25% off Stylish sport and dress watches.**

Seiko, Bulova, Caravelle and Pulsar. Famous name watches known for accuracy and precision. With quartz analog movements. Bands, straps, or bracelets, in styles for men and women. Percentage off represents savings on regular prices. Intermediate markdowns may have been taken on originally priced merchandise shown on this page. Reductions from originally priced merchandise effective until stock is depleted. Sale prices on regularly priced merchandise effective through Saturday.



Open 8 am Friday.

# JCPenney

Winston-Salem, Hanes Mall 768-2510

