

Poetry Corner
by Jane Penn

Send your poems to Poetry Corner, P.O. Box 3154, Winston-Salem, N.C. We are not responsible for returning submissions, and because of the volume of mail received, there may be some delay in the publication of your poems.

"Exceptional Love"

When one feels loved
His smile becomes brighter
Problems and Pain are never the matter.

When one is loved
His features are all aglow
He ignores the wordly situation here below.

When one is truly loved
With the one love Christ has for each of us
He usually doesn't appreciate it and for
Wordly goods he continues to lust.

But all must realize before it's too late
That the greatest love anyone can feel
Is that love God the Father instilled in
Christ Jesus, that an everlasting life we'd live.

He paid for our sins on Golgotha's hill
He gave up the ghost in efforts that we
Wouldn't remain lost.

Yet so many of us live foolishly, not
Realizing an eternal hell will be the cost.

Veronica L. Bitting

"The Atlanta Killings"

It has us all wondering why?
A young child has to die
So young, just beginning,
But meeting an unfair and evil ending.
I passed a neighborhood street
Just the other day.
It seemed so strange, no children
Were out to play.
I ran to a local park, no one was out
And it wasn't even dark.
I picked up a paper at the corner stand
Held a conversation with a wise old man.
Puzzled and confused were the lines on his face.
As darkness began to fall, I hurried home with haste.

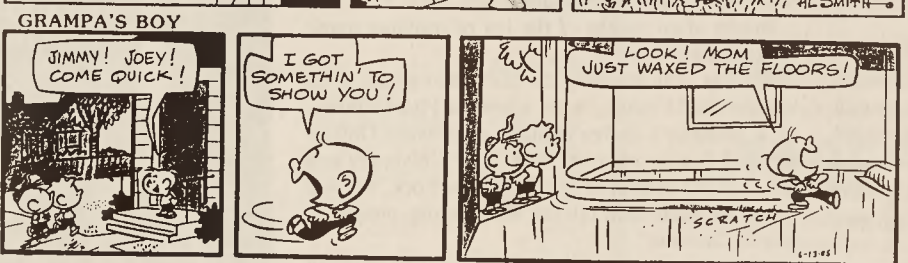
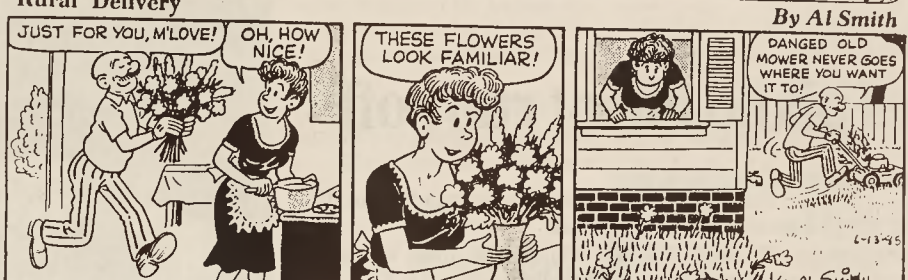
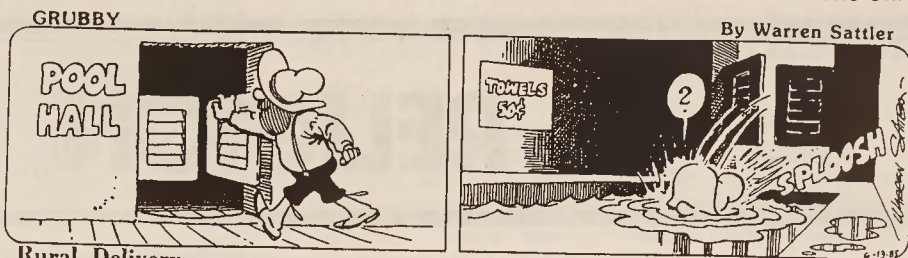
Robert "Bobby" Luckey, Statesville

Wood

From Page B10

"There have been a couple of times, where I said, 'OK, it's time to quit.' But as long as I keep growing, I will stay. That's what I've told Alvin."
She adds: "I feel I can do other things."
And her career, no matter how successful it has been, has not

been a personal sacrifice, said Wood.
"It's true you have to give up a lot to lead this kind of life," she says. "You are gone a lot and you limit your social life and relationships. But I don't look at it as a sacrifice at all. You work very hard."
Please see page B19



STARSCOPE
by Clare Annsweil

WEEK OF: JUNE 13, 1985

AQUARIUS - January 21-February 19
Interviews are featured this week, the key is to be forthright but not aggressive. Financial planning requires careful attention. If traveling, allow time for side trips.

PISCES - February 20-March 20
Academic interests are expanding or changing. New recreational activities are highlighted, and a new relationship gets off to a happy start. Family obligations may be less costly than expected.

ARIES - March 21-April 20
You may be on your own more than expected; use the time to make some important financial decisions. Agreements or offers are subject to delay. Academic horizons are broadened.

TAURUS - April 21-May 22
Opportunity may open up for earning spare cash. Reaction to your travel ideas may be more encouraging than thought. If launching a fitness program, take a gradual approach.

GEMINI - May 23-June 21
Several postponed events are rescheduled and there may be a possible conflict. Glamorous event highlights the weekend. You can help some friends mend an injured relationship.

CANCER - June 22-July 22
This is a good period for taking inventory and asking for outstanding funds. An old friend offers unexpected support. Optimistic business news highlights the week.

LEO - July 23-August 22
Pay debts promptly and meet as many social obligations as possible; a distracting period is soon to begin. Week marks the start of a cycle that accents renewed commitment.

VIRGO - August 23-September 22
Good week to launch self-improvement schemes, both physical and mental in nature. Watch tendency to play the martyr. New hairstyle or wardrobe can put you in a sociable mood.

LIBRA - September 23-October 22
Volunteer assignment can bring prestige. Family member has cause to celebrate; your encouragement is important. New relationship brings out the sentimental side of your personality.

SCORPIO - October 23-November 21
Week is one of the most sociable on record. You can make a key business contact at a party or dinner. Friends enjoy pampering you. Delayed financial news arrives by weekend.

SAGITTARIUS - November 22-December 22
Discussions can turn into heated debates. It's important that there's a diplomat nearby. Obstacles are removed in work environment and you see how goals can be achieved.

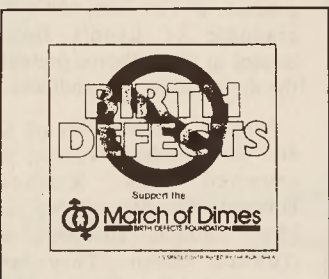
CAPRICORN - December 23-January 20
You may be taking off on a spending spree, so consider hiding the credit cards. Travel proves more educational than expected. Job projects bring successful results by Tuesday.

BIRTHDAY THIS WEEK
You're known for your superior intellect and a winning wit. You have a gift for learning languages, which should prove useful in a year that favors travel. Personal affairs demand a more committed, less superficial, approach.

BORN THIS WEEK
June 13th, actor Richard Thomas; 14th, actress Dorothy McGuire; 15th, critic Harrison Reid; 16th, publisher Katherine Graham; 17th, actor Ralph Bellamy; 18th, singer Paul McCartney; 19th, actress Gena Rowlands.

Kool Jazz
From Page B10

Though Holland, college president for 10 years, originated the event, current president of the university Dr. William Harvey feels those same ties. "The Hampton University family has always welcomed the opportunity to be part of such a fine musical event.
"Since originating on campus," he said, "the new artists featured coupled with the standard 'oldies but goodies' continue to provide our audience with a wide array of talent."
This year will add yet another twist -- gospel music.
With a well-respected history of providing the best in quality jazz and rhythm and blues, the festival always has something for everyone.
With gospel artists like Andrae Crouch and the Clark Sisters, the festival just extends its musical extravaganza one step further.



MOVIE TIME

REYNOLDA Cinema 1&2
748-1188 • REYNOLDA MANDR CENTER
1. **RAMBO**
Shows: 2, 4, 6, 8, 10 (R)
2. **SECRET ADMIRER**
Shows: 3, 5, 7, 9 (R)
3. **BLOOD SIMPLE**
Shows: 3:15, 5:15, 7:15, 9:15 (R)

University Plaza Cinema 1&2
722-5845 • UNIVERSITY PLAZA
1. **DARYL**
Shows: 3, 5, 7, 9 (PG)
2. **PRIZZI'S HONOR**
Shows: 3, 5, 7, 9 (R)

PLITT
THRUWAY 722-3439 BARGAIN MATINEE 32.50 1st 2 Shows
HERE COME THE LITTLES
Shows: 2, 3:30, 5 (G)
ROCKY HORROR PICTURE SHOW CALIGULA
Midnight Fri. & Sat.

Jackson
From Page B10
Melba Moore's current album.
The idea of working behind the scene with such talents was a dream come true for Freddie -- well at least one of the dreams. The other was to become a solo artist in his own right and with "Rock Me Tonight" he's well on his way.

SOFT SHEEN PRODUCTS PRESENTS

The Carefree SUMMER FEST
starring **MAZE**
featuring **FRANKIE BEVERLY PATTI LABELLE TEENA MARIE O'JAYS**
FRIDAY, JUNE 21 - 7:30 PM GREENSBORO COLISEUM
Tickets \$14.50 & \$16.50 (All Seats Reserved)
Tickets available at Coliseum Box Office and all Ticketron outlets
Brought to you by Soft Sheen products and participating distributors.

William T. Williams

Cross-Creek 84 x 54 1/2

SEECCA

8 June - 21 July
750 Marguerite Drive
Winston-Salem
Mr. Williams will lecture at SEECCA on Wednesday, June 19, 8 p.m. Please call for reservations, 919-725-1904.

Z93 THE TRIAD'S HOT FM **Budweiser** **Pizza Inn**

Presents **Celebration '85!**
The largest Fireworks Display and entertainment package ever in the Triad!

Featuring **The Commodores**
Melba Moore/Freddie Jackson/Con Funk Shun
Saturday - July 6, 6:00 P.M.
(Gates Open at 4:30)
Bowman Gray Stadium (Stadium Dr. Winston-Salem)

Tickets \$12⁵⁰ in advance \$15⁰⁰ at the door
Children 12 and under \$10⁰⁰

Tickets available at W-S Coliseum and Ticketron Locations
WS, Peaches and Greensboro Record Ctr.

Bring The Family! Rain or Shine!
Partial proceeds go to World Hunger/USA for Africa
Produced by Will Jam, Main Associates and DVP Promotions