

Winston-Salem State University announces staff appointments

Chancellor Cleon F. Thompson announced seven new administrative appointments at Winston-Salem State University which became effective Aug. 1.

Alex B. Johnson has been named executive assistant to the chancellor and is responsible for planning and coordination of administrative functions essential to the operation, management and development of the university.

From 1983 until June of this year, Johnson has served as executive assistant to the vice chancellor for academic affairs.

Johnson earned a bachelor of science degree in intermediate education at WSSU in 1971 and a master's degree in curriculum and instruction (early childhood/special education) from Pennsylvania State University in 1978.

Johnson joined the WSSU staff in 1981 as associate professor of education and is the author of articles on special education.

Charles Williams has been named assistant vice chancellor for support services and will be the vice chancellor for academic affairs in all phases of Winston-Salem State's academic program.

Williams came to the university in 1984 as a counselor after serving as director of counseling at Central College for two years.

From 1978, he has held the position of assistant professor of education and resource counseling in charge of the university's counseling program. He earned his bachelor's and master's degrees from North Carolina A&T State University and his doctorate at North Carolina State University.

Willie Grissom has been named the university's vice chancellor of business affairs.

Grissom, who joined the staff in 1984, served as vice chancellor for business affairs from 1968 to 1984 at which time he became in-charge of auditor/systems analyst. He has extensive background in university administration also in various positions as assistant business manager and university administrator.

Grissom earned his degree in accounting at North Carolina Central University in 1964 and holds two master's certificates of completion from the National Association of Accountants and the University of Michigan. He is a member of the North Carolina Department of Administration.

Hazel Harvey has been appointed academic dean of the university.

Harvey is professor of English in the department of communication which she chaired from 1977 to 1981. Dr. Harvey was most recently the director of the division of liberal arts and sciences.

Harvey earned her bachelor's degree at North Carolina Central University and her master's degree and doctorate from the University of Michigan.

Velma Jackson has been named the university's director of alumni affairs. A graduate of WSSU, she has a master's degree in professional diploma in education and personnel administration from Teachers College-Columbia University, in New York. She earned her doctorate at North Carolina State University in 1981.

Dr. Johnson will coordinate and implement alumni activities and maintain an updated file of all WSSU alumni.

Cheryl Harrison, who recently served a year as WSSU's acting director of alumni affairs, has been appointed the university's director of annual fund and development giving. In this role, she will be responsible for the coordination and direction of the WSSU Annual Fund and will develop and direct the university's deferred giving effort.

Harrison received her bachelor's degree in business administration from WSSU.

Fannie Williams has been named the first director of the Anderson Center for Continuing Education



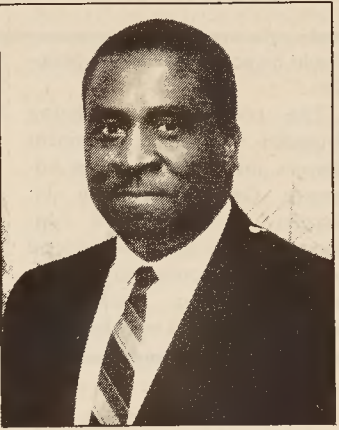
Dr. Hazel Harvey



Velma Jackson



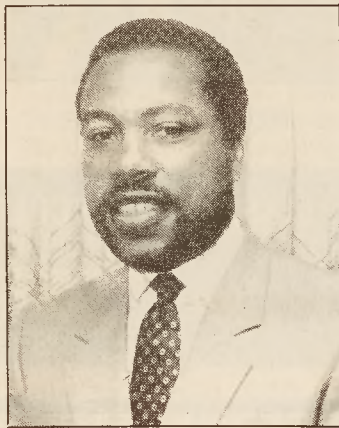
Cheryl Harrison



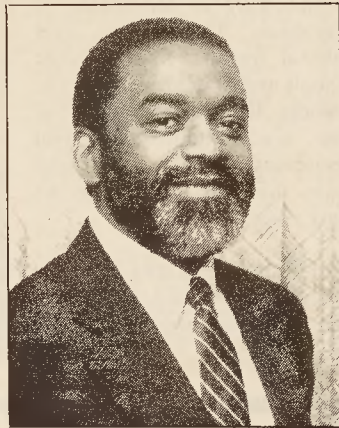
Willie E. Grissom



Joseph L. Totten



Dr. Alex B. Johnson



Dr. Charles Williams

The Anderson Center, which will house such university programs as Project Strengthen (a biomedical research/pre-med program), the department of music's commercial music studio, microelectronics, continuing education and evening school, the Center for Graduate Studies and the division of education.

In addition to classrooms which can be converted to conference rooms, the facility includes a 400-seat auditorium, a 6,600-foot multipurpose room, a 75-seat formal dining area, two cafeterias, several fixed conference rooms, an exhibit-display center and other common areas.

The chancellor says the appointment is significant because it will provide the university with a staff member to oversee the facility. The center will be accessible not only to university-sponsored programs, but also to groups sponsored by public and private agencies and the community at large.

Mrs. Williams is a graduate of North Carolina Central University and completed additional study at North Carolina A&T State University and the University of Michigan. She joined the WSSU staff in 1961 as an admissions clerk in the Registrar's Office.

During her time at the university, she has served as interim director of financial aid, director of admissions, special assistant to the chancellor and, most recently, director of personnel.

Joseph L. Totten has joined



Fannie Williams

the WSSU staff as director of personnel.

He earned his bachelor's degree in history and a degree in law at North Carolina Central University. He has served as a hearing officer and equal employment opportunity/affirmative action liaison specialist for the North Carolina Office of State Personnel and as a financial aid officer for Durham College.

In other personnel announcements, Myron Chenault, formerly the university's vice chancellor for development affairs, has been named vice chancellor for development and university relations.

Chenault came to WSSU in 1982 from Ohio, where he served as associate vice president for legal, staff and contract relations at Bowling Green State University.

Please see page A16

DID YOU KNOW
WE OFFER FREE
DOOR-TO-DOOR PICKUP
AND
DELIVERY SERVICE?



Kevin Thomas,
CAMEL CITY
SOUTHSIDE ROUTE DRIVER

Hello, I'm Kevin Thomas,
the new route driver
for South Winston-Salem.
Just give me a call and I'll
pick up your laundry right
at your door.

"Serving the Community
for 60 Years."

Visit any of our 11 convenient locations:

- Downtown
501 E. Third St.
- Wachovia Building
Park Level
- Old Town Center
3828 Reynolda Road
- Stratford Plaza
Stratford Road at I-40
- North Point
(Behind McDonald's)
- Corporation Parkway
(Next to Hechinger's)
- Reynolda Manor
Shopping Center
- Vineyard Plaza
4806 Country Club
- Highway 52 Plaza
Rural Hall
- 5101 Country Club Road
(Near Calvary Baptist Church)
- Welcome, N.C.
(Downtown)

Celebrating Our 60th Year CALL 722-6196

COUPON

SPECIAL

Use this coupon for \$5.00 OFF
your first order of \$10.00 or
more for new
ROUTE SERVICE Customers.
CALL TODAY — 722-6196

COUPON

\$ EARN CASH \$

Cash Paid for Each Donation
Earn Up to 80 Dollars a Month

WINSTON-SALEM PLASMA CENTER

"Helping People Help Others"
425 N. Trade Street
725-9774

MEMBER OF THE WINSTON-SALEM CHAMBER OF COMMERCE

Did you know:

- All PLASMA donors must pass a thorough physician-administered physical exam before donating, as well as pass other specific medical criteria required at each donation.
- PLASMA centers must be approved and licensed by the Food & Drug Administration.
- PLASMA centers are inspected on an annual and unannounced basis by the Food & Drug Administration.
- PLASMA centers must follow strict Food & Drug Administration regulations for DONOR SAFETY and PRODUCT QUALITY.

Get FREE Check-Up
Donate 2 Times a Week
Mini-Examination by a Doctor on 1st Visit
Receive Cash After Donating

FREE SCREENING LAB WORK
No Appointments Necessary

NOW A COMPLETE STAFF CERTIFIED
BY THE HEART ASSOCIATION FOR CPR

HOURS: 7 a.m. to 3 p.m., Tues., Thurs., Fri., Sat./
Wed. 10 a.m. to 6 p.m.

For just a little of your time,
you can be a tremendous help!

DID YOU KNOW ...

- 2,000 infant deaths have been prevented by the use of Rh Immune Globulin prepared from PLASMA
- 40 million hospital patients rely on PLASMA industry products each year
- 20,000 hemophiliacs in the United States rely on PLASMA-produced Antihemophilic Factor concentrate daily
- 200,000 people are infected with Hepatitis B each year. Hepatitis Vaccine, prepared from PLASMA, is expected to reduce the incidence (or impact) of this disease
- 120,000 burn victims, 200,000 heart surgery patients and shock victims rely on the use of PLASMA-produced Albumin for fluid and protein replacement. In 1983 over 2,500,000 patients received Albumin products.
- 3 million transfused patients rely on blood grouping and typing sera, prepared from PLASMA. In 1983 these sera were used for the preparation of 12 million units of blood for transfusion.



PEOPLE ♦ PEOPLE

COUPON

EARN AN EXTRA \$10
ON YOUR
SECOND DONATION

\$

This Coupon Applies to New Donors or Individuals
Who Haven't Donated in One Month.
Winston-Salem Plasma Center "Helping People Help Others"

COUPON