



Amina Fakir, Miss Black America 1985.

Hampton U. to host Miss Black America Pageant

The 19th annual Miss Black America Pageant and Television Special has been set to be videotaped Oct. 4 at Hampton University in Hampton, Va., for airing this fall.

J. Morris Anderson, the founder and executive producer of the annual pageant, said, "The Miss Black America Pageant is 19 years old, and it is now time for her to go to college."

In response to why Hampton University was selected as the site for this year's pageant, Anderson said, "Hampton University is small enough to appreciate the Miss Black America Pageant, large enough to afford it and avant-garde enough to identify with it."

"I surveyed all of the predominantly black colleges and universities in America and found Hampton University to be more progressive, more up-to-date and more abreast of the times."

The pageant was founded in 1968 and has been aired on na-

tional television ever since as a means of providing a stage on which the black woman can display her talent.

Anderson said that since the pageant is primarily a television special event, he was extremely impressed to learn that Hampton University places more of its academic emphasis on its telecommunications curriculum than do many of its counterparts.

Dr. William Harvey, president of Hampton University, said he

was proud to have the university associated with the pageant, and he plans to use the resources of Hampton University to insure that the quality of the production is better than the best MBA pageants of the past.

To accomplish that end, Harvey secured the services of a Hollywood producer as an executive consultant to help maintain the highest level of production value in the television special.

Anderson said the pageant's association with Hampton University is the greatest thing that has happened to the pageant since it was telecast live as a prime-time special on the NBC network.

"The comfortable ascension of the MBA Pageant into the halls of academia will cause doctors of philosophy, Hollywood stars, producers and talented women to mingle compatibly on a common stage," Anderson said.

"New Wood/New Ways" coming to Piedmont Craftsmen Inc.

"New Wood/New Ways," an invitational exhibition of sculptural and functional pieces by contemporary U.S. and Canadian artists, will open in the gallery of Piedmont Craftsmen Inc. on Sept. 19.

The exhibition illustrates current trends in woodworking and reveals how the distinctions between furniture and sculpture have adjusted to new expectations in the '80s.

Some works are strictly func-

tional, while other works stretch woodworking traditions past recognition.

People who worship the natural aspects of wood may find this exhibition somewhat controversial. Others may find such distortions delightful and witty.

"New Wood/New Ways" is circulated by the Southern Arts Federation, of which the North Carolina Arts Council is a member, and is made possible by

funds from the National Endowment for the Arts.

The exhibition will open with a public reception from 7 to 9 p.m. on Sept. 19 and will continue through Sunday, Oct. 12.

The gallery is located at 411 N. Cherry St. Hours are Monday through Friday, 10 a.m. to 6 p.m., Saturday, 10 a.m. to 5 p.m., and Sunday, 1 to 5 p.m.

Fall Savings

SAVE FOR YOUR HOME. PLUS IT'S THE FINAL WEEK OF OUR BABY-YOUR-BABY SALE.



SAVE ON BEDDING

\$5 to \$25 off

Dreamy blankets

Sale 12.99 twin, Reg. \$18. Our acrylic thermal blanket for all-season coverage. Nylon binding.

Sale 16.99 twin, Reg. \$25. Contemporary stripe blanket of woven acrylic, great as a stadium warm-up.

Sale 22.99 twin, Reg. \$35. Supra-Vellux® blanket of flocked nylon and polyurethane, so velvety-soft.

Sale 29.99 twin, Reg. \$40. Cozy automatic blanket of acrylic/polyester. Full sizes with single or dual control. Full, queen and king sizes are also on sale (no king size stripe blanket).

Sale 7.99 twin Romantic percales

Reg. 11.99. The charm of ribboned bouquets on cotton/polyester percale. Flat or fitted sheets. Full, Reg. 15.99 **Sale 12.99**

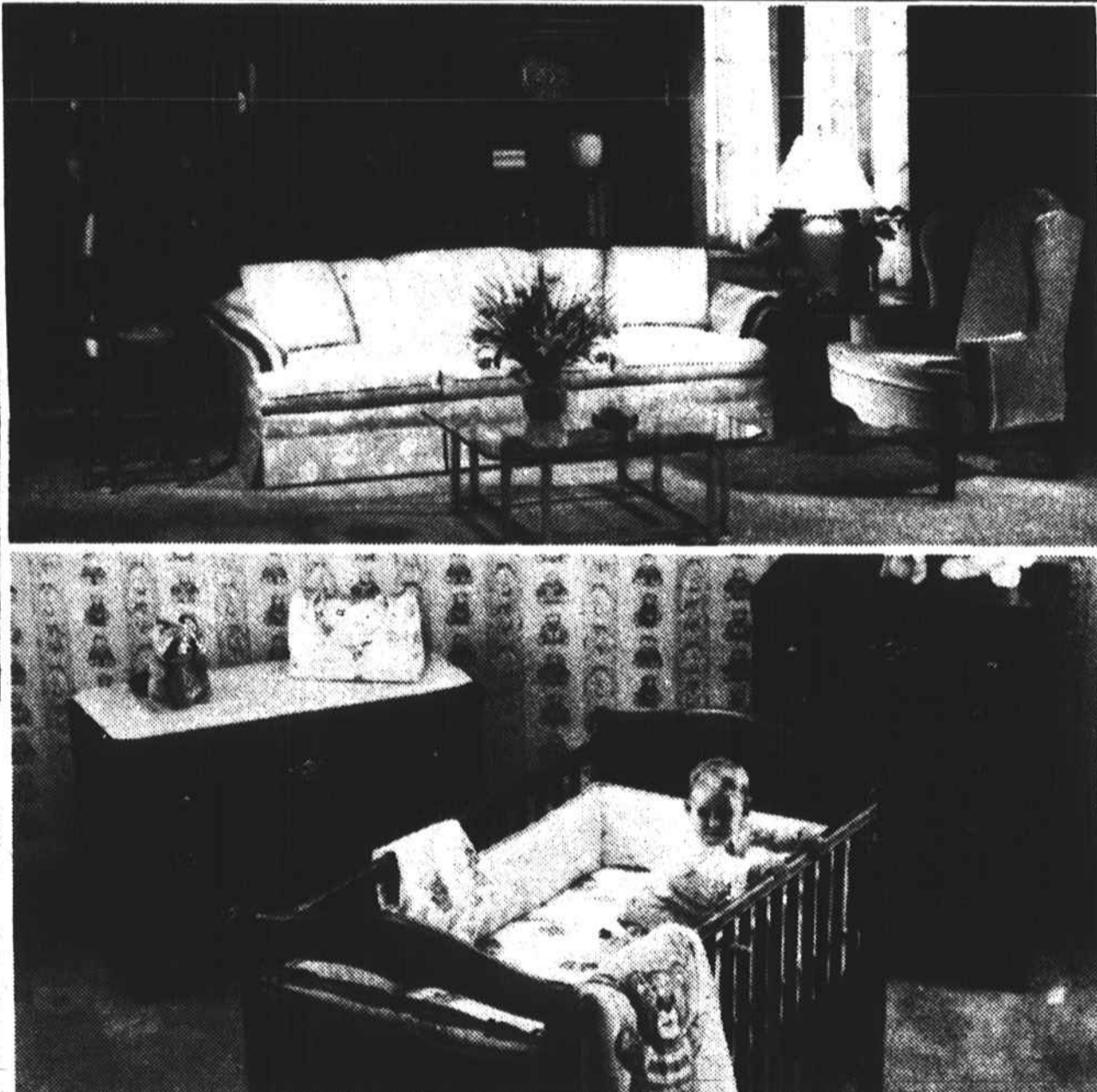
Pillowcases, by the pair: Standard, Reg. 12.99 **Sale 10.99**

Matching comforters plumped with polyester fiberfill: Twin, Reg. \$80 **Sale 59.99**

Full, Reg. \$100 **Sale 74.99**

Twin or full bedskirts and pillow shams are also on sale.

Queen, king sizes also on sale.



\$2 off JCPenney bath towels

Reg. \$8. Solid terry towel of cotton/polyester. Reg. **Sale**
Hand towel 5.50 **3.99**
Washcloth 2.75 **1.99**

Reg. \$8. Solid velour towel of cotton/polyester. Reg. **Sale**
Hand towel 5.50 **3.99**
Washcloth 2.75 **1.99**

Reg. \$8. Floral towel of cotton velour. Reg. **Sale**
Hand towel 5.50 **3.99**
Washcloth 2.75 **1.99**

20% off Bath curtains

Sale \$24 Reg. \$30. Double-swag polyester shower curtain; lined.
6x6" shower curtain or window curtain: Reg. \$25 **Sale \$20 ea.**

FURNITURE SAVINGS

\$200 off Wellesley® series sofa

Sale \$599 Reg. \$799. Traditional sofas, covered in polyester/olefin/cotton with Scotchgard® protection. Reg. **Sale**

Wing chair \$449 **\$349**

Club chair \$429 **\$329**

Loveseat \$749 **\$549**

Transitional glass and metal accent tables, Reg. \$349 **Sale \$249**

40% to 50% off All Sealy® mattresses

Here's just a sample: mattress or foundation:

Posturepedic® Sterling Ruby closeout; Orig. **Sale**

Twin, ea. 389.95 **194.95**

Full, ea. 469.95 **234.95**

Queen 2 pc. set 1199.95 **599.95**

King 3 pc. set 1499.95 **749.95**

SAVINGS FOR BABIES

Sale 8.99 Infants' pants set

Reg. \$11. Toddletime® polyester/cotton set. Corduroy pants and fleece top with applique accents.

Sale \$16 Toddletime® dresses

Reg. \$20. Nana's Pet® pretty print dresses of woven polyester/cotton. For toddler girls, sizes 2T-4T.

Sale 6.99 Toddletime® sleeper

Reg. 8.99. Cozy footed sleeper of warm Celanese® Fortrel® polyester. Sizes ½-6, 8.

Sale 5.99 Reg. 7.99. Sleeper of stretch polyester terry. Sizes ½-1½.

Sale 20% and more on other Toddletime® underwear, napwear, hosiery and sleepers.

\$170 off 3-pc. nursery set

Sale \$487 Reg. \$657. Bassett® nursery set: crib, dresser with vinyl pad, and chest. Of hardwood and wood products.

Reg. **Sale**

Double drop-side crib \$199 **\$149**

3-drawer dresser \$229 **\$169**

4-drawer chest \$229 **\$169**

Shown, but not included in the set: 280-coil mattress, Reg. \$60 **Sale 49.99**

20% off Toddletime® coordinates:

Cotton crib sheet 7.00 **5.60**

Cotton receiving blanket ... 7.00 **5.60**

Polyester/cotton comforter or bumper pad 22.00 **17.60**

Polyester/cotton diaper stacker 7.50 **6.00**

Diaper changer bag 14.00 **10.99**

Sale 249.95 19" color TV

Reg. 349.95. 19" (meas. diag.) portable color TV with electronic tuning and automatic color control. #2106

\$120 off Table model VCR

Sale 399.95 Reg. 519.95. 2-head VHS VCR with 11 function wireless remote. HQ picture control; 14 day/4 program-mability. Cable capable. #6071

Bush® oak-framed TV/VCR stand; adjustable shelf, #5238, Reg. 129.95 **Sale 99.95**

SAVE ON ELECTRONICS

\$300 off Super sound system

Sale 499.95 Reg. 799.95. MCS Series® package includes 100 watts per channel amplifier, AM/FM stereo receiver, 5-band per channel graphic equalizer, dual cassette deck, built-in compact disc player; semi-automatic turntable, two speakers. Audio rack, unassembled. #2242/8300

100 watts RMS minimum per channel, 2 channels driven at 8 ohms, 40-20,000 Hz with not more than 0.9% THD.

JCPenney

Winston-Salem, Hanes Mall 768-2510

