

Finance Rates AS LOW AS 4.9% APR* on selected vehicles in stock!

\$99 DOWN/\$146²⁶ per mo.



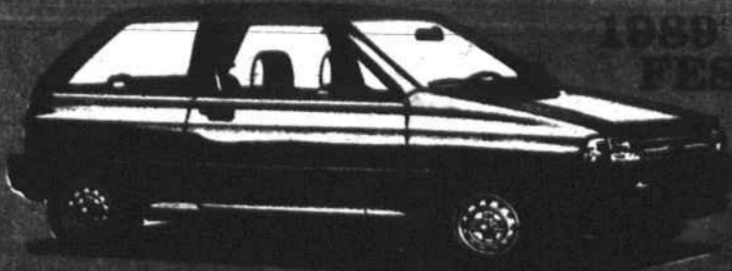
1989 ESCORT PONY
1574LES
1574LES

ONLY \$99 DOWN

Call for price, model, options. 4.9% APR for 30 mos. Auto. Finance. 100% financing available. 100% financing available. 100% financing available.

\$99 DOWN/\$122⁹⁴ per mo.

Small Price, Big On Value

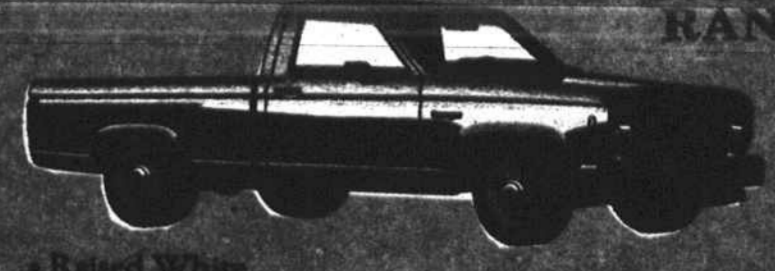


1989 FESTIVA
1446E

ONLY \$99 DOWN

Call for price, model, options. 4.9% APR for 30 mos. Auto. Finance. 100% financing available. 100% financing available. 100% financing available.

SAVE \$1044



1988 RANGERS
1327
1328

- Raised White Lower Trim
- Headliner
- Deluxe Wheel Trim
- Rearview Mirror

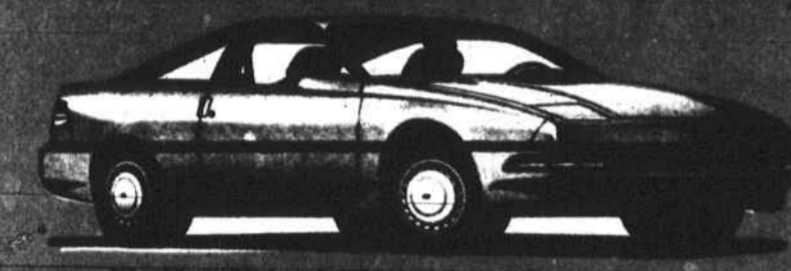
Parkway Disc. Ford Rebate

\$6999

Or Special Finance Rate in Line of Business

'89 Ford Probe

A Great Time to Buy a Probe!



- Air Conditioning
- Power Brakes

- Power Steering
- Cloth Seats

\$12,140

- \$841

\$11,299

Plus tax, tags & title fee

NOTICE!

Parkway Ford's First Time Buyer's Plan

If you have no or little credit, verifiable employment, a permanent address, you could qualify for a new car or truck! Call or come in for complete details.

724-5921

'89 Ford Mustang LX 2 dr

In A Class By Itself!



- Special Road Wheels
- AM/FM Cassette
- Speed Control
- 3-Speed Manual O/D Transmission
- Power Locks
- Power Windows
- Dual Electric Remote Mirrors

Ford Disc. Parkway Disc. Ford Rebate

\$10,466

-1,016

-551

-400

\$8499

Plus tax, tags & title fee

'89 Tempo GL 4 dr.



11161TP
1016TP
1065TP

- 3-Speed Air Conditioning
- Power Windows
- Dual Electric Mirrors
- Power Locks

- Tire Steering
- Power Steering
- Power Brakes

\$11,131

-1,000

-649

-500

\$8982

Plus tax, tags & title fee

Special Finance Plan

Festiva, Escort, Expo and Ranger

12-24 Mths — 4.9% 37-48 Mths — 5.9%

25-36 Mths — 6.9% 49-60 Mths — 8.9%

or Cash Assistance

1989 ESCORT	500.00
1989 ESCORT EXP	500.00
88 RANGERS	750.00
'89 RANGER (Ead "S") Man. Trans.	750.00
'89 RANGER (Ead "S") Auto. Trans.	500.00
'89 RANGER "S"	500.00
TAURUS (Ead SHO)	500.00
TEMPO	500.00
'88 T-BIRD (Turbo Coupe)	1000.00
'88 T-BIRD (Non Turbo Coupe)	600.00
MUSTANG (Excluding 50)	400.00
BRONCO II	600.00
AEROSTAR (Regular length)	500.00
F-250/F-350 (Manual Trans.)	500.00
F SUPER DUTY (Manual Trans.)	500.00

'88 Ford Aerostar

Raised Roof Conversion

In A Class By Itself! WITH COLOR TV!

ONLY 71 LEFT!



In A Class By Itself! WITH COLOR TV!

- AM/FM Cassette
- 4 Captain's Chairs
- Air Conditioning
- Automatic
- Power Steering
- Power Brakes

Parkway Disc. Crescent Cruiser Rebate

\$18,995

-2287

-500

-500

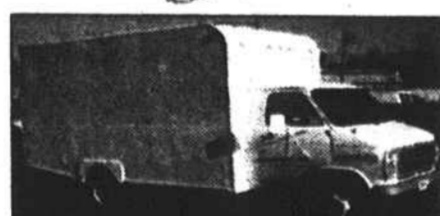
\$16,699

Plus tax, tags & title fee

* Based on 24 mo. financing and no customer cash assistance.



1987 FORD AEROSTAR XLT
\$13,995



1988 GMC PARCEL DEL. VAN
V-8, auto., AM/FM
\$15,500



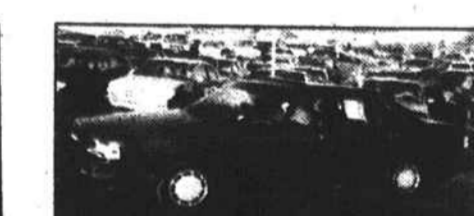
1987 BRONCO II 4x4
5-speed, air, stereo.
\$12,995



'86 CHEV. CELEBRITY EUROSPORT
Loaded, w/factory equip.
\$7995



1986 DODGE CARAVAN
7-pass., auto., stereo.
\$9995



1984 AUDI 5000 S
Loaded with equip.
\$7995



1987 CHEV. ASTRO VAN
7-pass., auto., air, stereo, tilt, cruise.
\$12,995



1986 CHEV. CELEBRITY
Eurosport
\$7995



1987 CHEV. CAMARO
\$11,995



1987 MERC. GRAND MARQUIS
Loaded with factory equip.
\$13,995



1987 NISSAN MAXIMA
Automatic, sunroof.
\$13,995



1987 ACURA INTEGRA RS
5-sp., air, stereo.
\$11,900

CARS

- '85 Pontiac Grand Prix V-6, auto., air, stereo, console. 9560A
- '88 Ford T-Bird Turbo Cpe. Loaded, leather int., sunroof. 2,000 miles. 8721B
- '84 Mercury Marquis 4-Dr. V-6, auto., air, tilt, cruise. 9908A
- '87 Mercury Sable V-6, auto., air, stereo, cruise. 1271A
- '84 Camaro Z-28 V-8, auto., air, stereo, tilt, cruise. 9788A
- '79 Mercury Cougar V-8, auto., air, stereo, white w/red int. 993A
- '86 Camaro V-8, auto., air, stereo, tilt, cruise. 8101C
- '86 Dodge Lancer Auto, air, stereo. T3144A
- '88 T-Bird Turbo Cpe. Loaded, w/factory equip., 13,000 miles. T3317B
- '86 Chev. Celebrity 4-Dr. Eurosport V-6, auto., air, stereo, cruise. 1162A
- '85 Mercury Cougar Auto, air, stereo, p/s, p/w. T3765B
- '86 Chev. Celebrity 2-Dr. Eurosport V-6, loaded, w/factory equip. T3374A
- '82 Ford Heritage T-Bird V-8, sunroof, loaded, white w/red int. 1191A

- '86 Dodge Caravan 4-cyl., auto., air, stereo, p/w. T2790A
- '87 Ford Taurus 4-cyl., auto., air, stereo. U303
- '85 Ford LTD 4-Dr. V-6, auto., air, stereo. 1028A
- '85 Olds Custom Cruiser Wgn. V-8 engine, loaded w/factory equip. T3505A

MUSTANGS

- '87 Mustang G.T. 5-sp., air, tilt, cruise, stereo. 7630A
- '65 Ford Mustang V8, st. dr., stereo. 1045A
- '87 Mustang G.T. T-Top Auto., air, tilt, cruise, stereo. U312
- '86 Mustang L.X. H-Back 4-cyl., 4-sp., air, stereo. 1079A
- '86 Mustang G.T. 5-sp., air, stereo, sunroof. T3899A
- '88 Ford Mustang L.X. H-Back 4-cyl., 5-sp., tilt, cruise. 9879A
- '87 Mustang G.T. Fully equip., 23,000 miles. U290
- '88 Ford Mustang L.X. V-8, 1-rop, 5-sp., loaded. T3621A
- '88 Mustang L.X. H-Back 4-cyl., auto., air, sunroof. 9073A

IMPORTS

- '86 Hyundai 4-Dr. 4-sp., air, stereo. 9897A
- '87 Mazda Cab Plus 5-sp., 20,110 mi. Extra clean. T2563A
- '83 Mazda RX7 5-sp., air, stereo. T3948A
- '84 Audi 5000 S 4-Dr. Auto, sunroof, extra nice car. 9031B
- '88 Hyundai 4-Dr. 5-sp., stereo, 9,000 miles. 8982A
- '87 Nissan Pickup 5-sp., A/C, AM & FM w/cass., 12,000 mi. 9568A
- '87 Honda CRX 5-sp., air, stereo. 7736A
- '88 Mitsubishi Pickup 5-sp., stereo, 9,000 miles. 8515B
- '87 Acura Integra Air, 5-sp., stereo. 9697A
- '87 Nissan Maxima Auto, sunroof, white w/tan int. 1177A

- \$13,995
- \$14,995
- \$14,995
- \$4995
- \$7995
- \$5995
- \$7995
- \$7995
- \$8995
- \$8995
- \$8995
- \$11,900
- \$13,995

- '85 Mercedes Fully factory equip., 33,000 miles. B-1
- 4 x 4's
- '87 Ford Bronco II 4x4 V-6, auto., air, stereo. XLT. T3763A
- '87 Ford Bronco II 4x4 V-6, 5-sp., air, stereo. T3372A
- '85 Ford Ranger 4x4 4-cylinder, automatic, air. T3784A
- '88 Ford F-250 4 Wh. Dr. 6.9 Diesel, auto., air, stereo/cass., loaded. T3841A
- '87 Ford Ranger Super Cab 4x4 V-6, 5-sp., air, stereo. R122A
- '87 F-150 Pickup 4x4 V-6, 4-sp., air, P/S, P/B. R122B
- '88 Ranger Super Cab 4x4 V-6, 5-sp., air, stereo. XLT. 9763A
- '89 Ford Aerostar XLT Loaded w/factory equip. 10,000 mi. T3253A
- '88 Ford Aerostar 7-pass., auto., air, stereo. U311
- '87 Ford Ranger XLT Super Cab V-6, 5-sp., stereo, 15,000 miles. 9199B
- '85 Dodge Pickup 6-Cyl., 4-sp., L. bed, white w/red interior. T3550B
- '87 Chev. Astro Van Loaded, w/equip., almost new. T2997A

TRUCKS

- \$39,995
- \$11,995
- \$12,995
- \$8995
- \$16,995
- \$10,995
- \$11,500
- \$12,995
- \$16,500
- \$11,995
- \$9995
- \$6995
- \$12,995



PARKWAY FORD

2104 PETERS CREEK PARKWAY WINSLOW, N.C. 28586 724-5921

Triad's Only Award Winning Dealership 6 Years In a Row

