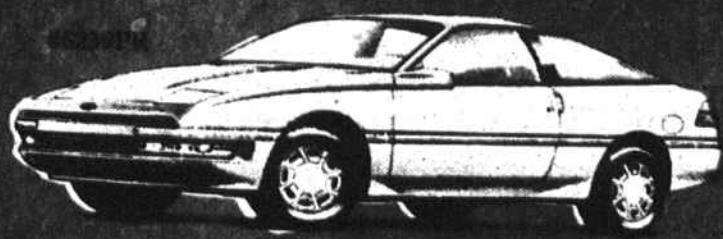


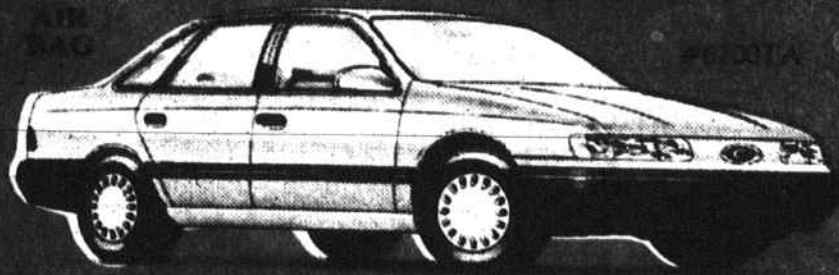
**\$8,999\***



**\$11,687\***

**\$8,989\***

**\$10,471\***



**\$13,980\***

**\$8,594\***

**\$12,763\***



**\$16,885\***

**1991 NEW CAR-TRUCK CLOSEOUT!**

THESE CARS AND TRUCKS MUST BE SOLD BEFORE DEC. 31ST!

- |             |                  |                      |
|-------------|------------------|----------------------|
| <b>CARS</b> | <b>TRUCKS</b>    | <b>DEMONSTRATORS</b> |
| 1 T-BIRD    | 1-RANGER XLT 4x4 | 1-TAURUS LX          |
| 2-ESCORTS   | 1-F-150 4x2'S    | 1-AEROSTAR           |
| 5-MUSTANGS  | 1-E-150 VAN      | 1-92 CROWN VICTORIA  |
| 1-PROBE     |                  |                      |
| 1-FESTIVA   |                  |                      |

THESE NEW CARS AND TRUCKS WILL NEVER BE PRICED LOWER!!

**1st TIME BUYER BONUS**

IF YOU HAVE NO OR LITTLE CREDIT, VERIFIABLE EMPLOYMENT, A PERMANENT ADDRESS, YOU COULD QUALIFY FOR A NEW FORD CAR OR TRUCK.

CALL US TODAY!

(919) 724-5921

**PARTS AND SERVICE DEPTS. ARE OPEN SATURDAYS 8 A.M.-2 P.M.**

'88 OLDS NINETY EIGHT REGENCY Auto, A.C., all power	#1871	\$12,995
'89 FORD TBIRD SUPER COUPE 5 spd., A.C., all power, white w. gray leather	#L925A	\$12,995
'89 CHEV. CAMARO RS V-8, auto, A.C., tilt, cruise, 19000 miles	#K212A	\$11,995
'89 CHRYSLER LEBARON CONV. Auto, A.C., P.W., P.L.	#78870A	\$10,995
'88 FORD MUST. GT V-8, 5 spd., A.C., P.W., P.L.	#5123	\$10,995
'87 BUICK PARK AVENUE 2 DR. Auto, A.C., leather int., sunroof, all power	#T8911B	\$10,995
'89 CHEV. CAMARO RS V-8, auto, A.C., tilt, cruise	#502A	\$10,995
'89 MERCURY COUGAR V-6, auto, A.C., all power	#6134A	\$10,995
'89 FORD T-BIRD V-6, auto, A.C., all power	#4684A	\$10,995
'89 TAURUS SHO Leather int., all power, stereo	#L939	\$10,995
'88 BUICK REGAL LIMITED 2 DR. V-6, auto, A.C., all power	#T9141A	\$9995
'91 FORD ESCORT 2-DR. 5 spd., A.C., stereo	#5448A	\$9995
'88 MERCURY COUGAR LS V-6, auto, A.C., P.W., P.L.	#5185A	\$8995
'90 FORD ESCORT STA. WAGON 5 spd., A.C., stereo, lock track	#5510A	\$7995
'88 FORD FESTIVA 4 spd., stereo	#K1163	\$3995
'84 DODGE OMNI 4-DR. Auto, A.C., stereo, 42000 miles	#1-934A	\$3995

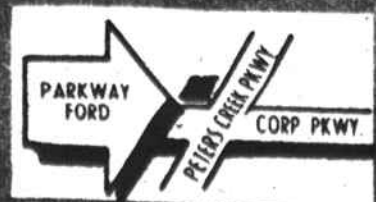
**ALMOST NEW SALES CENTER**

'91 FORD MUSTANG G.T. CONV. V-8, auto, A.C., P.W., P.L. #L849	'91 FORD XLT EXPLORER DR. 4 wheel drive, P.L. <b>SOLD</b>
(2) '91 FORD TAURUS GL 4 DR. V-6, auto, A.C., P.W., P.L. #L1982	'91 FORD TAURUS GL STA. WAGON V-6, auto, A.C., all power, 14,000 mi.
'91 MERCURY COUGAR LS V-6, auto, A.C., all power, 17,000 mi.	(3) '91 MERCURY SABLE GS V-6, auto, A.C., P.W., P.L.
'91 FORD PROBE GL 5 spd., A.C., stereo, cast alum. whb. #L965	(2) '91 FORD AEROSTAR EXT. VAN XLT V-6, auto, dual A.C., P.W., P.L.

These are used units with low miles, all prices plus tax & tag on approved credit.  
**PARKWAY FORD'S**

**ALMOST NEW SALES CENTER**

'90 FORD CLUB WAGON XLT 15 pass., V-6, auto, A.C., P.W., P.L.	#L926	\$18,995
'91 CHEV. S-10 BLAZER TAHOE PKG. 4-dr., V-6, auto, A.C., P.W., P.L.	#T9159A	\$14,995
'89 FORD AEROSTAR LX EXT. VAN V-6, auto, A.C., tilt, cruise	#5552A	\$13,995
'90 FORD F-150 XLT V-6, 5 spd., A.C., bedliner	#T8848A	\$12,995
'89 FORD F-150 XLT LARIAT SUPER CAB 4X4 V-8, 5 spd., A.C., bedliner	#T9027A	\$12,995
'90 FORD F-150 XLT LARIAT V-8, auto, A.C., P.W., P.L.	#T3099A	\$11,995
'89 FORD F-150 XLT LARIAT 4X4, 6 cyl., 4 spd., A.C.	#T9165A	\$11,995
'89 FORD BRONCO II XLT 4x4 V-6, auto, A.C., P.W., P.L.	#5144A	\$10,995
'86 FORD F-350 FLAT DUMP V-8, 4 spd., 12 ft.	#8260A	\$10,995
'89 MITSUBISHI MONTERO 4X4 V-6, 5 spd., A.C., stereo	#T9035A	\$10,995
'89 PLY. VOYAGER SE 7 pass. auto, A.C., AM/FM, Npg!	#5126A	\$10,995
'89 FORD AEROSTAR XLT V-6, auto, dual A.C., P.W., 4 captain chairs	#T9190A	\$10,995
'87 FORD F-250 V-8, 4 spd., A.C., stereo	#T8445A	\$9995
'90 DODGE DAKOTA EXT CAB 5 spd., A.C., stereo	#5481B	\$8995
'89 FORD RANGER XLT V-6, 5 spd., A.C., extra trim	#T8917A	\$7995
'88 FORD RANGER 4 cyl., 5 spd.	#T8429A	\$5995



SERVING THE CAROLINAS SINCE 1967  
**PARKWAY FORD**



2104 PETERS CREEK PARKWAY, WINSTON-SALEM 724-5921

NCL NO. 703