

New 1992 Cadillac

Sedan de Ville

For Only **\$26,635***

Listed for **\$32,910**

\$443.⁹³/Month

Or

36 Month Smart Lease

Stock #C2164



First month's lease payment of \$443.93, plus \$500 refundable security deposit, plus 10% cap. cost reduction (down payment) due at lease signing. Total payments \$15,981.37. Taxes, license, title fees extra. \$14,480.40 purchase option. Mileage charge of 15¢ per mile over 36,000 miles. Lessee pays for excessive wear and use. GMAC must approve lease.

*Plus tax, tags and license fees extra.

Cadillac



New 1992 Cadillac Eldorado

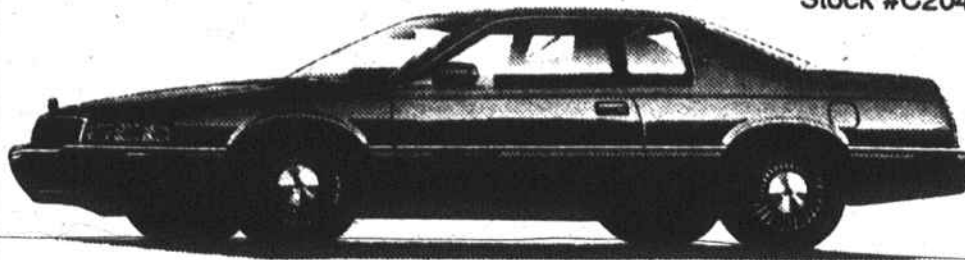
For Only **\$29,765***

Listed for **\$34,812**

\$396.²⁸/Month

Or **36 Month Smart Lease**

Stock #C2043



First month's lease payment of \$396.28, plus \$400 refundable security deposit, plus 10% cap. cost reduction (down payment) due at lease signing. Total payments \$14,266.02. Taxes, license, title fees extra. \$18,380.74 purchase option. Mileage charge of 15¢ per mile over 36,000 miles. Lessee pays for excessive wear and use. GMAC must approve lease.

*Plus tax, tags and license fees extra.

New 1992 Cadillac

Seville

For Only **\$33,470***

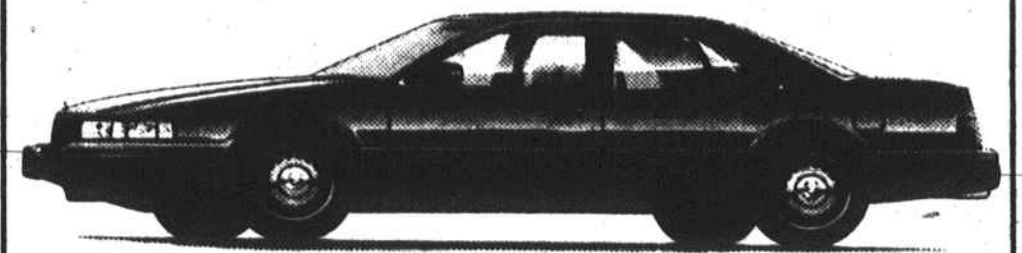
Listed for **\$38,529**

\$463.⁸¹/Month

Or

36 Month Smart Lease

Stock #C2112



First month's lease payment of \$463.81, plus \$475 refundable security deposit, plus 10% cap. cost reduction (down payment) due at lease signing. Total payments \$16,697.17. Taxes, license, title fees extra. \$19,071.86 purchase option. Mileage charge of 15¢ per mile over 36,000 miles. Lessee pays for excessive wear and use. GMAC must approve lease.

*Plus tax, tags and license fees extra.

OIL CHANGE SPECIAL

\$13.⁹⁵

CADILLAC CARS AND GMC TRUCKS UP TO 1/2 TON ONLY INCLUDES: LUBE, OIL (GM GOODWRENCH), FILTER, CHECK FLUID LEVELS, BELTS AND HOSES

SERVICE HOURS:

MONDAY - FRIDAY 7:30AM - 5:00PM

OFFER GOOD 8-21-92 THRU 8-27-92

Classic's Top Ten

All our used vehicles carry a 3 month, 3,000 mile powertrain warranty.

- ★ 1
- ★ 2
- ★ 3
- ★ 4
- ★ 5
- ★ 6
- ★ 7
- ★ 8
- ★ 9
- ★ 10

	1990 Chevy S-10 Duramax Auto., a/c, AM/FM p/s, chrome trim, Uniroyals, 33K mi. local trade. Was \$7,995.	SOLD	NOW ONLY \$7,495
	1989 Pontiac Grand Am LE 2DR Auto., a/c, alloy wheels, AM/FM cassette, p/l, 45K mi., red. Was \$8,995.		NOW ONLY \$7,995
	1989 Oldsmobile Supreme SL 2DR V-6 eng., auto., a/c, tilt, equalizer, luggage rack, cruise, aluminum wheels, extra clean. Was \$9,295.		NOW ONLY \$8,495
	1991 Buick Regal Limited 4DR V-6 eng., auto., a/c, tilt, cruise, p/w, p/l, cassette, p/driver's seat, aluminum wheels, extra sharp. Was \$13,895.		NOW ONLY \$12,800
	1991 Oldsmobile 88 Royal Brougham 4DR White/blue cloth, only 23K mi., local trade, V-6, auto., a/c, tilt, cruise, equalizer, p/w, p/l, p/driver's seat, wire wheels. Beautiful car. Was \$16,495.		NOW ONLY \$15,795
	1991 GMC 1500 Sierra SLE 2WD Short-Bed 350 V-8 eng., auto., a/c, tilt, cruise, stereo, p/w, p/l, bedliner, lots of chrome, only 7K mi., nicest one around. Was \$16,495.		NOW ONLY \$15,995
	1990 GMC 1500 Sierra SLE 4WD Short-Bed V-8, auto., a/c, p/w, p/l, tilt, cruise, graphic equalizer, alum. wheels, sliding r. window, much more, 28K mi. Was \$16,895.		NOW ONLY \$15,995
	1992 GMC Safari XL SLE 8 Passenger Van 4.3 V-6 eng., extended length, 8 pass. seating, front & rear a/c, AM/FM cass., tilt, cruise, p/l, p/w, much more. Super nice. Was \$19,995.		NOW ONLY \$18,995
	1991 Cadillac DeVille 4DR White w/blue leather, V-8, a/c, p/w, p/m, p/doors, p/seats, p/antenna, security system, ABS, air bag, much more, 26K mi. Was \$22,750.		NOW ONLY \$21,895
	1989 Cadillac Allanté Convertible W/Hardtop ONLY 5,272 MILES. Hardtop stand, ABS, midnight black w/burg. leather, local trade, security syst., air bag, much more. Immaculate condition.		MUST SEE

Buy with confidence! 100% satisfaction or your money back, up to 48 hours from time of purchase on any used car that has passed Classic's 21 point mechanical & safety inspection! Tax, tags and license extra.

CLASSIC GMC TRUCK CENTER

Sonoma

Starting at **\$8165.** ⁰⁰ After Rebate and First-Time Buyer

(Stock #T-2074)



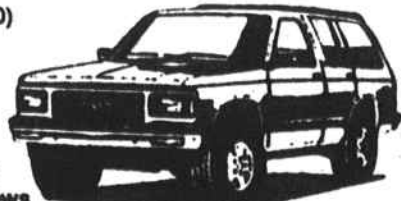
Payment **\$143.⁰⁰**

Based on sale price of \$9315. 10% down payment in cash or trade, plus tax, tags and fees. APR 9.25 for 60 months. Total of payments \$8619.

Jimmy

Starting at **\$18,225** After Rebate

(Stock #T-2040)



Payment **\$320.⁰⁰**

Based on sale price of \$20,225. 10% down payment in cash or trade, plus tax, tags and fees. APR 9.25 for 60 months. Total of payments \$19,222.40.

TIARA CONVERSION VANS

Starting at **\$20,000** (After Rebate)

Payment **\$345.⁰⁰**

- High Top
- Television
- Tilt/Cruise
- Power Windows/Locks
- And Much, Much More



Stock #T-2066

*Based on sale price of \$21,300. 10% down payment in cash or trade, plus tax, tags & fees. APR 9.25 for 60 months. Total of payments \$20,702.00.



Cadillac



"YOUR ALL-AMERICAN DEALER"

7726 North Point Blvd
Winston-Salem, NC 27106

(919) 759-2239

(800) 277-2239



TRUCKS & VANS