

New 1992 Cadillac

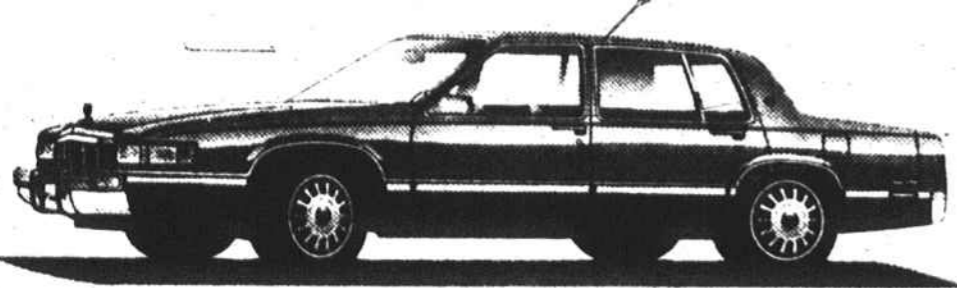
Sedan de Ville

For Only \$26,635*

Listed for \$32,910

\$443.⁹³ /Month

Stock #C2164



First month's lease payment of \$443.93, plus \$500 refundable security deposit, plus 10% cap. cost reduction (down payment) due at lease signing. Total payments \$15,981.37. Taxes, license, title fees extra. \$14,480.40 purchase option. Mileage charge of 15¢ per mile over 36,000 miles. Lessee pays for excessive wear and use. GMAC must approve lease.

*Plus tax, tags and license fees extra.

Cadillac



New 1992 Cadillac

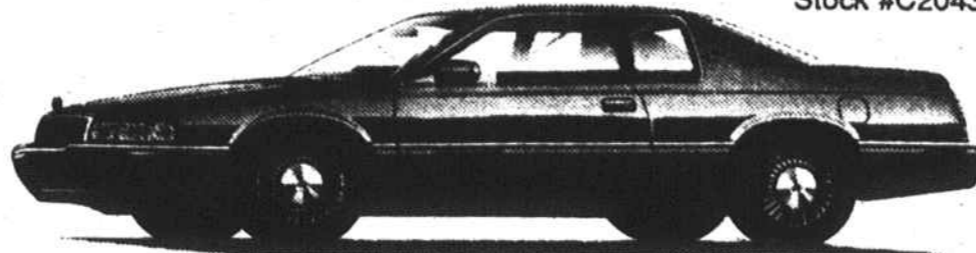
ELDORADO

For Only \$29,765*

Listed for \$34,812

\$396.²⁸ /Month

Stock #C2043



First month's lease payment of \$396.28, plus \$400 refundable security deposit, plus 10% cap. cost reduction (down payment) due at lease signing. Total payments \$14,266.02. Taxes, license, title fees extra. \$18,380.74 purchase option. Mileage charge of 15¢ per mile over 36,000 miles. Lessee pays for excessive wear and use. GMAC must approve lease.

*Plus tax, tags and license fees extra.

New 1992 Cadillac

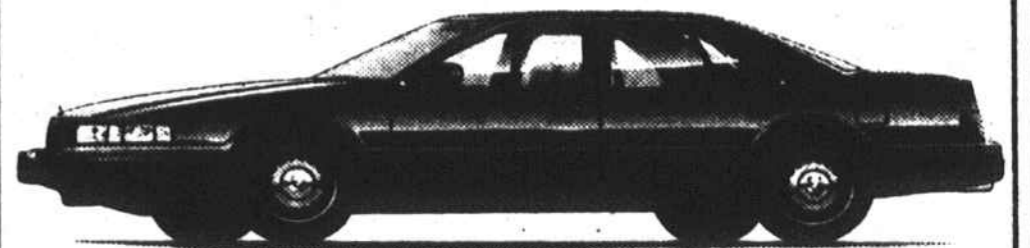
SEVILLE

For Only \$33,470*

Listed for \$38,529

\$463.⁸¹ /Month

Stock #C2112



First month's lease payment of \$463.81, plus \$475 refundable security deposit, plus 10% cap. cost reduction (down payment) due at lease signing. Total payments \$16,697.17. Taxes, license, title fees extra. \$19,071.86 purchase option. Mileage charge of 15¢ per mile over 36,000 miles. Lessee pays for excessive wear and use. GMAC must approve lease.

*Plus tax, tags and license fees extra.

OIL CHANGE SPECIAL
\$13.⁹⁵

CADILLAC CARS AND GMC TRUCKS UP TO 1/2 TON ONLY
INCLUDES: LUBE, OIL (GM GOODWRENCH), FILTER, CHECK FLUID LEVELS, BELTS AND HOSES
SERVICE HOURS:
MONDAY - FRIDAY 7:30AM - 5:00PM
OFFER GOOD 9-11-92 THRU 9-17-92

September 18th & 19th
1992
BLOW OUT SALE

CONVERSION VANS
SAFARI VANS
CARGO VANS
SONOMAS

JIMMYS
SUBURBANS
SIERRAS

Lowest prices of the Year
and Special Finance Plans.

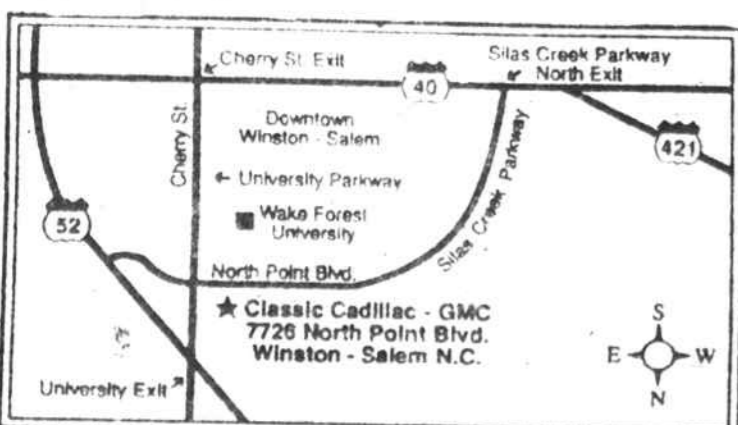
Tiara Factory Reps On Hand

Classic's Top Ten

All our used vehicles carry a 3 month, 3,000 mile powertrain warranty.

- 1  **1988 Dodge Shadow 4DR**
Auto., a/c, stereo, p/s, aluminum wheels. Ready to go. Was \$4,695. **NOW ONLY \$3,995**
- 2  **1990 Chevrolet Corsica LT 4DR**
V-6 eng., auto., tilt, cruise, cassette, a/c., p. door locks, super nice, low mileage. Was \$7,495. **NOW ONLY \$6,995**
- 3  **1989 Oldsmobile Supreme SL 2DR**
V-6 eng., auto., a/c, tilt, equalizer, luggage rack, cruise, aluminum wheels, extra clean. Was \$8,495. **NOW ONLY \$7,395**
- 4  **1989 Pontiac Firebird**
5.0 V-8 eng., auto., a/c, tilt, p/w, p/l, cassette, aluminum wheels, 1 owner, local car, only 18K mi. Was \$9,495. **NOW ONLY \$8,995**
- 5  **1991 Buick Regal Limited 4DR**
V-6 eng., auto., a/c, tilt, cruise, p/w, p/l, cassette, p/driver's seat, aluminum wheels, extra sharp. Was \$12,800. **NOW ONLY \$11,995**
- 6  **1991 Oldsmobile 88 Royal Brougham 4DR**
White/blue cloth, only 23K mi., local trade, V-6 auto., a/c, tilt, cruise, equalizer, p/w, p/l, p/driver's seat, wire wheels. Beautiful car. Was \$15,795. **NOW ONLY \$14,895**
- 7  **1991 GMC 1500 Sierra SLE 2WD Short-Bed**
350 V-8 eng., auto., a/c, tilt, cruise, stereo, p/w, p/l, bedliner, lots of chrome, only 7K mi., nicest one around. Was \$15,995. **NOW ONLY \$14,995**
- 8  **1990 GMC 1500 Sierra SLE 4WD Short-Bed**
V-8, auto., a/c, p/w, p/l, tilt, cruise, graphic equalizer, alum. wheels, sliding r. window, much more, 28K mi. Was \$15,995. **NOW ONLY \$14,995**
- 9  **1992 GMC Safari XL SLE 8 Passenger Van**
4.3 V-6 eng., extended length, 8 pass. seating, front & rear a/c, AM/FM cass., tilt, cruise, p/l, p/w, much more. Super nice. Was \$18,995. **NOW ONLY \$17,695**
- 10  **1991 Cadillac DeVille 4DR**
White w/blue leather, V-8, a/c, p/w, p/m, p/doors, p/seats, p/antenna, security system, ABS, air bag, much more, 26K mi. Was \$21,895. **NOW ONLY \$20,995**

Buy with confidence! 100% satisfaction or your money back, up to 48 hours from time of purchase on any used car that has passed Classic's 21 point mechanical & safety inspection! Tax, tags and license extra.



CLASSIC
CADILLAC • GMC TRUCK

"YOUR ALL-AMERICAN DEALER"

7726 North Point Blvd
Winston-Salem, NC 27106

(919) 759-2239

(800) 277-2239

Sales Department Hours
Monday - Friday: 8:30 AM - 7:00 PM
Saturday: 9:00 AM - 4:00 PM

Service & Parts Department Hours
Monday - Friday: 7:30 AM - 5:30 PM