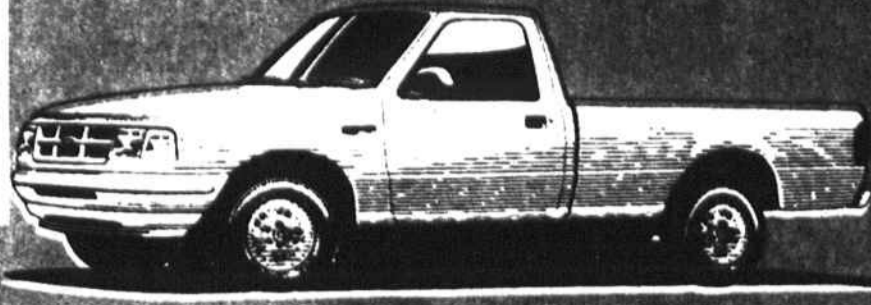


PARKWAY FORD'S ROAD TO THE FINAL FOUR!

REMEMBER WHEN CAR PAYMENTS WERE UNDER \$100? THEY'RE BAAACK!!
1993 FORD RANGER XLT

\$99

PER MONTH
 24 Months Lease



- XLT Trim
- Power Steering
- Sliding Rear Window
- AM/FM Cassette
- Chrome Step Bumper
- P255 Owl Tires
- Floor Console
- Cast Aluminum Wheels
- 60/40 Split Bench Seat
- Air Conditioning

THIS IS NO GIMMICK - OVER 100 RANGERS AVAILABLE AT THIS PAYMENT!

\$1,700 down plus 1st month payment, security deposit, tax, tag, NCI on approved credit, total of payments \$2,376, lease end value \$7,355.04.

1993 ESCORTS

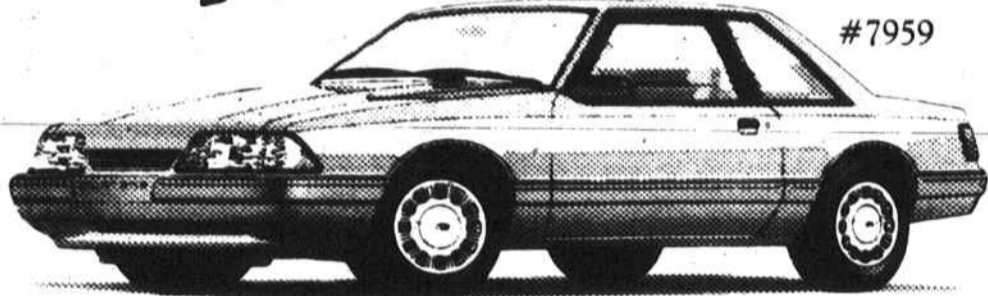


ALL THESE MODELS ARE EQUIPPED WITH:
 • POWER STEERING • AIR CONDITIONING •
 ELECTRIC REMOTE MIRRORS • AM/FM CASSETTE
 • LUXURY WHEEL COVERS

YOUR CHOICE!

\$9,998*

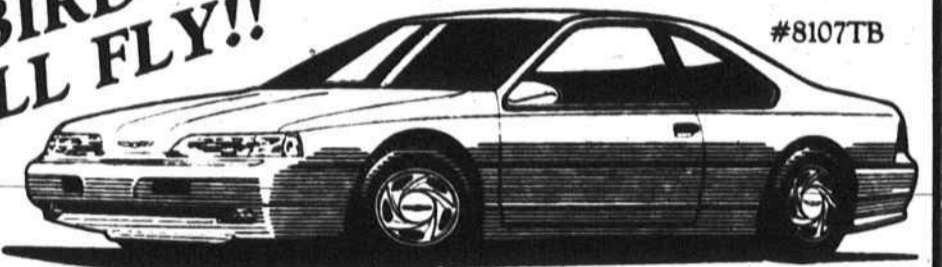
1993 MUSTANG LX
\$149 PER MONTH
 FOR 24 MONTHS LEASE



- Cast Aluminum Wheels
- Premium Sound
- Air Conditioning
- Rear Defogger
- 5-Speed

\$1700 down plus 1st month payment, security deposit, tax, tag, NCI on approved credit. Total of payments \$1576. Lease end value \$6,779.

1993 THUNDERBIRD LX
 #8107TB



- 3.8 V-6
- Auto. OD Transmission
- Rear Defroster
- Cast Aluminum Wheels
- Power Antenna
- Power Windows
- Power Seat
- Speed Control
- AM/FM Cassette
- Air Conditioning

\$14,999*



OUR ALL-AMERICA #1 BEST SELLERS!



- 203A Package
- 3.0 EFI V-6
- Automatic
- Air Conditioning
- Speed Control
- AM/FM Cassette
- Rear Defroster

\$299 Per Month For **24** Months



- AM/FM Cassette
- Chrome Bumpers
- Air Conditioning
- Cloth Seats
- 5-Speed
- Much More

\$299 Per Month For **24** Months



- Cloth Interior
- 3 Speed Overdrive
- 1.3 EFI Engine
- AM/FM w/Digital Cloth

\$6,999*



#1 SPORT/UTILITY VEHICLE OVER 50 TO CHOOSE FROM

SERVICE DEPARTMENT HOURS: MON.-FRI. 7:30-7:30, SAT. 8:00-2:00

'89 MERCEDES 300 SEL 4 Dr.	\$27,995
'91 LINCOLN CONTINENTAL SIG. SERIES	\$21,995
'91 SAAB 900 4-DR	\$13,995
'89 ACURA LEGEND V6, LS, 4 DR.	\$13,995
'91 CHEV. LUMINA EURO 2 DR.	\$12,995
'91 CAMARO	\$12,995
'91 MERCURY COUGAR LS	\$12,995
'93 FORD ESCORT LX STA. WAG.	\$9995
'90 OLDS CUTLASS SUPREME 4-DR.	\$9995
'91 FORD TAURUS GL 4 DR.	\$9995
'91 CHEV. CORSICALT 4 DR.	\$9995
'91 HONDA CIVIC 4 DR.	\$9995
'91 MERCURY COUGAR XR-7	\$8995
'88 T-BIRD TURBO CPE	\$6995

'86 FORD TAURUS 4 DOOR	\$5995
'90 FORD FESTIVA	\$5995
'86 FORD ESCORT STA. WGN.	\$3995
'91 GMC SAFARI 7 PASS VAN	\$13,995

FORD FACTORY PROGRAM CARS

5 TO CHOOSE FROM
92 FORD CROWN VICTORIA LX 4 DR.
 V8, Auto, AC, all power, alum whls
\$15,990*

17 - '92 TAURUS GL
 V-6, Auto, AC, PS, PW, PL
 OR
 4 - '92 MERCURY SABLE G.S.
 V-6, Auto, AC, all power
\$12,500*

'90 FORD F-150 S. BED	\$11,995
'89 FORD BRONCO II XLT 4x4	\$10,995
'90 FORD F-150 XLT LARIAT	\$10,995
'89 FORD BRONCO II 4x4	\$10,995
'91 NISSAN L. BED PICKUP	\$10,995
'88 FORD XLT CLUB WAGON	\$9995
'89 FORD AEROSTAR XL 7 PASS.	\$9995
'92 FORD RANGER XLT L. BED	\$9995
'86 FORD XLT CLUB WAGON	\$9995
'89 FORD RANGER 4x4	\$8995
'88 FORD F150 XLT LARIAT	\$7995
'91 FORD RANGER	\$7995
'90 FORD RANGER XLT	\$6995

NEW ARRIVALS ON FORD FACTORY PROGRAM CARS

3 - '92 AEROSTAR XL VAN Auto, AC, PW, PL, Cruise, Tilt, Cruise	1 - '92 FORD XL CLUB WAGON 15 PASSENGER V8, auto, dual AC, P/W, P/L	3 - 1992 MUSTANG LX CONVERTIBLES 1 - 5.0 V-8, 5 speed, air cond., vibrant red with white leather, white top. 1 - 5.0 V-8, auto, air cond., green with black top. 1 - 4 cyl., auto, air cond., white with black top, loaded, with factory equip., low miles, extra sharp.	1992 FORD TEMPO GL 4 DR. Auto, AC, PW, PS, PL, Cruise, Stereo, Tilt, Tilt, Tilt, Tilt, Tilt	1992 FORD EXPLORER XLT 4 DR. V8, auto, dual AC, PW, PL, PS, Cruise, Tilt, Tilt, Tilt, Tilt, Tilt, Tilt, Tilt, Tilt	1992 FORD E-150 XLT CLUB WAGON V8, auto, dual AC, PW, PL, PS, Cruise, Tilt, Tilt, Tilt, Tilt, Tilt, Tilt, Tilt, Tilt
\$14,777*	\$15,990*		\$8475*	\$19,875*	\$16,990*