

PARKWAY SPRING SPECIALS

FORD'S TRUCK



ALL NEW MODEL!
1993 F-150 "LIGHTING"

- 5.8 HIGH PERFORMANCE V-8
- 3.0 RATIO LIMITED SLIP AXLE
- TRAILER TOWING PACKAGE
- XLT LARIAT TRIM

ONLY 3 AVAILABLE!



1993 F-350
CREW CAB

- 7.3 DIESEL V-8 ENGINE
- 4 SPEED AUTOMATIC TRANSMISSION
- AIR CONDITIONING
- AM/FM STEREO

WORKMAN'S DREAM!



1993 F-150 4X4
SUPER CAB

- XLT LARIAT TRIM • SPEED CONTROL • TILT WHEEL • AIR CONDITIONING • POWER WINDOWS • POWER LOCKS • AM/FM CASSETTE • 3.0 V-8 • AUTOMATIC • TRAILER TOWING PKG • TACHOMETER • SECT. SHFT 4X4 • CLOTH CAPTAIN'S CHAIRS • 2 TONE ACCENT PAINT

LOADED!



1993 F-150 XLT
LARIAT

- AUTOMATIC • AIR CONDITIONING • SPEED CONTROL • TILT WHEEL • POWER WINDOWS • POWER LOCKS • 3.0 V-8 • ALUMINUM WHEELS • CHROME BUMPER • SLIDING REAR WINDOW

#1 SELLER IN AMERICA!



NEW MODEL!!
1993 EXPLORER LIMITED

- LUXURY LEATHER INTERIOR
- JBL SOUND SYSTEM
- TILT-UP OPEN AIR ROOF

#1 RV SELLER IN AMERICA

ONLY 2 IN STOCK

NEW MODEL!



1993 BRONCO XLT

- 5.0 V-8 ENGINE
- AUTOMATIC TRANSMISSION
- LIMITED SLIP AXLE
- TRAILER TOWING PACKAGE
- LUXURY GROUP
- ELECTRIC SHIFT 4X4

ALL THIS AND ...

\$2,000 REBATE



1993 AEROSTAR

- 7 PASSENGER
- SPEED CONTROL
- AUTOMATIC
- REAR DEFROSTER
- AIR CONDITIONING
- TILT WHEEL
- AM/FM CASSETTE
- LUGGAGE RACK

19,331	LIST PRICE
1,900	FACT. DISC
1,000	REBATE
11,400	PKWY. DISC.

\$14,999*



\$6,600 DISCOUNT!
1993 SHERROD
CONVERSION VAN

- AUTOMATIC OVERDRIVE
- POWER WINDOWS
- POWER DRIVER'S SEAT
- TRAILER TOWING PACKAGE
- FOUR CAPTAIN'S CHAIRS
- CUSTOM PAINT
- RUNNING BOARDS
- LUGGAGE RACK

\$19,988*

1993 RANGER XLT

\$99

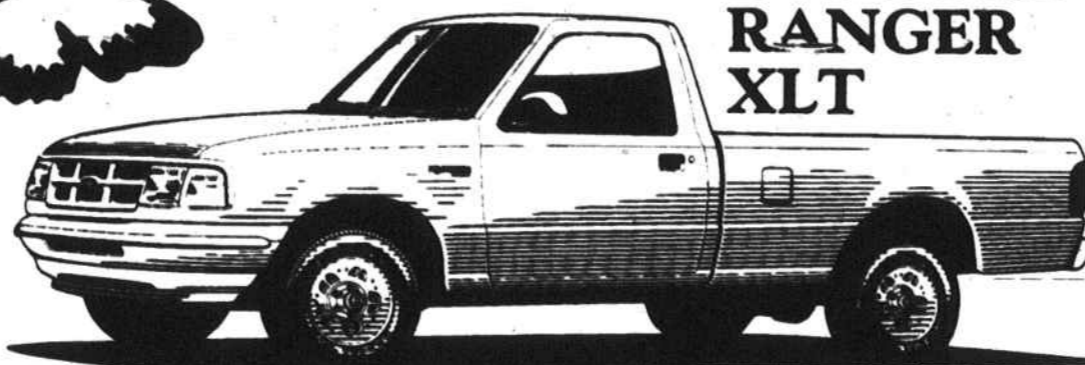
PER MONTH FOR 24 MONTHS LEASE

- XLT TRIM
- POWER STEERING
- SLIDING REAR WINDOW
- AM/FM STEREO CASSETTE
- CHROME STEP BUMPER

\$1,700 down plus 1st month payment, security deposit, tax, tag, NCI on approved credit, total of payments \$12,376, lease end value \$7,355.04.

USE EITHER OPTION TO BUY THIS TRUCK

1993 FORD RANGER XLT



\$99

DOWN

- 60/40 SPLIT SEAT
- AIR CONDITIONING
- P255 OWL TIRES
- FLOOR CONSOLE
- CAST ALUMINUM WHEELS

1993 ESCORT LX



- MANY STYLES AND COLORS TO CHOOSE ALL ARE EQUIPPED WITH POWER STEERING, AIR CONDITIONING, REMOTE MIRRORS, AM/FM CASSETTE AND LUXURY WHEEL COVERS

\$9,999*

1993 MUSTANG LX



- 2.3 EFI ENGINE
- AM/FM CASSETTE WITH PREMIUM SOUND
- SPEED CONTROL
- CAST ALUMINUM WHEELS

\$9,999*

1993 TAURUS GL



- 261S Package
- 3.0 EFI V-6
- Automatic
- Air Conditioning
- Speed Control
- AM/FM Stereo
- Rear Defroster

\$14,999*

1993 CROWN VICTORIA
DUAL AIR BAGS



- AUTOMATIC • LEATHER INTERIOR
- ALL POWER • POWER LOCKS • POWER WINDOWS • SPEED CONTROL • CAST ALUM. WHEELS • ANTI-LOCK BRAKES • TRAILER TOWING PKG • DUAL 4 WAY POWER SEATS

\$1,500 FACTORY REBATE

1993 THUNDERBIRD LX



- AUTOMATIC OVERDRIVE • AIR CONDITIONING • 3.8 V-6
- POWER ANTENNA • POWER WINDOWS • POWER SEAT
- CAST ALUMINUM WHEELS
- SPEED CONTROL • AM/FM CASSETTE • REAR WINDOW DEFROSTER

\$14,999*

1993 PROBE GT



- 2.3 DOHC V-6 • AIR CONDITIONING • TILT WHEEL
- REAR DEFROSTER • POWER WINDOWS • POWER LOCKS
- POWER ANTENNA • 5 SPEED
- BODY SIDE MOULDINGS

\$15,999*

SERVICE DEPARTMENT HOURS: MON.-FRI. 7:30-7:30. SAT. 8:00-2:00

'92 LINCOLN TOWN CAR V-6, Auto, AC, leather, alloy	#U1359A	\$23,995
'92 SATURN SL-2 SEDAN V-6, AC, alloy, 2.0L	#7214B	\$14,995
'92 FORD TAURUS GL 4 DR. V-6, auto, AC, alloy, 9.000mi	#72431A	\$14,995
'92 FORD PROBLEX V-6, AC, PW, PL, leather, alloy	#7998A	\$14,995
'91 CAMARO 5.0, auto, V-8, T-ops	#T-0708A	\$13,995
'91 MERCURY COUGAR LS. V-6, auto, AC, PW, PL	#T2279B	\$12,995
'92 FORD TAURUS GL 4 DR. V-6, auto, AC, alloy	#72709A	\$11,995

FORD FACTORY PROGRAM CARS

10 — '92 TAURUS GL
V-6, AUTO, PW, P. SEATS, CRUISE, PL, AM/FM CASS. AC
OR
4 — '92 MERCURY SABLE G.S.
V-6, AUTO, AC, PS, PW, PL
YOUR CHOICE \$12,500*

5 TO CHOOSE FROM
92 FORD CROWN VICTORIA LX 4 DR.
V-8, Auto, AC, all power, alu, whls
\$15,990*

'92 MAZDA RX7 V-6, AC, alloy, PW, PL	#U371	\$10,995
'90 FORD T-BIRD V-6, AC, alloy, PW, PL	#785A	\$10,995
'89 HONDA ACCORD V-6, AC, alloy, PW, PL	#776A	\$10,995
'91 CHEV. CAMARO RS V-6, AC, alloy, 12,000mi	#72461A	\$10,995
'90 FORD T-BIRD V-6, AC, alloy, PW, PL	#788A	\$10,995
'91 HONDA CIVIC 4 DR. V-4, AC, alloy	#7155A	\$9995
'90 OLDS CUTLASS CALAIS Auto, AC, alloy	#880A	\$7995

NEW ARRIVALS ON FORD FACTORY PROGRAM CARS

1 — '92 AEROSTAR XL VAN V-6, Auto, AC, PW, PL, Tilt, Cruise	'92 T BIRD V-6, Auto, AC, elec. cruise, P/beat, PW, elec. r. def., stereo w/cass., cast alum. wheels U1315	2 — '93 AEROSTAR XLT EXTENDED VANS V-6, auto, dual AC, PW, PL, cruise, tilt, AM/FM, cass., r. def. #U1497, #U1499	'92 MUSTANG LX HATCHBACK Auto, AC, cruise, AM/FM, cass., stereo, r. def. #U1500	1992 FORD TEMPO GL 4 DR. Auto, AC, PW, PS, PL, cruise, stereo w/cass., elec. R. Def.	1992 FORD EXPLORER XLT 4 DR. 4.0, V-6, 5-sp., AC, PW, PL, PS, cruise, tilt, stereo w/cass., cast alum. whls., leather int., luggage rack	1992 FORD F-150 XLT CLUB WAGON Auto, dual AC, PW, PL, stereo w/cass., P. seat, elec. cruise, 4 captain chairs, rear luggage rack, alloy whls. (Std. 12.000mi)
\$14,777*	\$11,990*	\$17,485*	\$10,660*	\$8475*	\$19,875*	\$16,990*

SERVING THE CAROLINAS SINCE 1967

PARKWAY FORD

2104 PETERS CREEK PARKWAY, WINSTON-SALEM 724-5021

1992 AWARD DEALER

12 Years in A Row

1992 AWARD DEALER