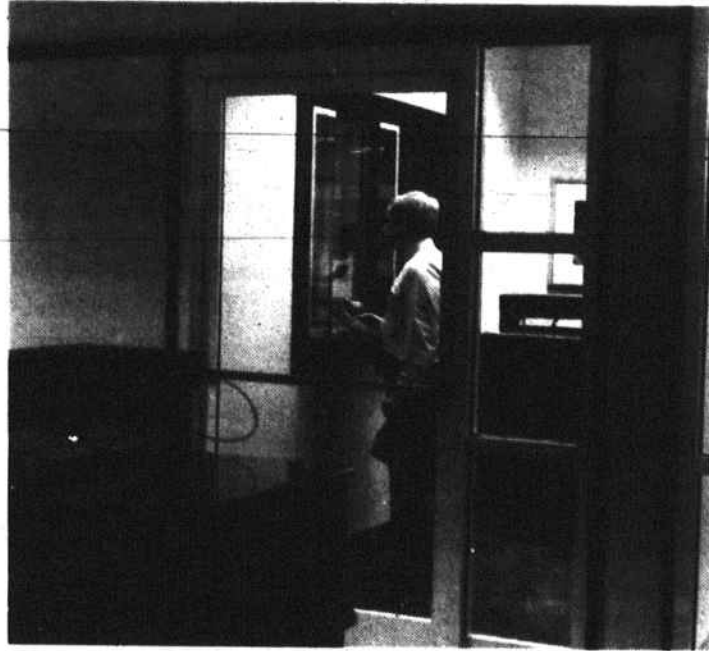


Thruway – Customer Convenience and Service

Wachovia's new Thruway Banking Center represents a new concept in branch banking and could very well be a prototype for the future. The two-story building is unique among Wachovia offices in Forsyth County because it combines the usual consumer banking operation on the ground level with a more specialized private/business banking group located on the second floor. The new office is designed to accommodate a full range of banking services in a comfortable, businesslike setting. Inside and out, the bank projects a very sophisticated look for the professional market that it serves.

The Thruway office is located in the heart of one of Winston-Salem's busiest commercial, professional and resi-



Commercial customers at the Thruway Banking Center enjoy the added convenience and privacy of a separate commercial deposit window.

dential sections. In recent years, several new office buildings have been built along South Stratford Road and on nearby Knollwood Street, all within sight of the new Wachovia office. And just across Business I-40 lie some of the city's most affluent neighborhoods.

All that was taken into account in designing and decorating the new bank, which replaces a Wachovia office that opened on the Thruway site in August 1965.

Designed by the Winston-Salem firm of Walter, Robbs, Callahan & Pierce Architect P.A., the new building projects a transitional style that blends bits of contemporary flair with the subtleties of a more traditional architecture.

Its brick-and-limestone exterior was selected to complement the look of the Thruway Shopping Center it sits in front of and because those are strong, quality materials that evoke a sense of stability and permanence.

The general contractor for the project was Frank L. Blum Construction Company of Winston-Salem.

Everything about the office is new, even the furniture. Gina Griffin, a Wachovia interior designer, said a new style of desks with round conference tops let customers pull up close to review documents with their Personal Bankers. The mahogany desks, which will be added to other Wachovia offices as they are built or remodeled, are made by Dar-Ran Furniture Company in High Point. The Chippendale side chairs and wing chairs used in the office were made by Hickory Business Furniture Company in Hickory.

A spacious foyer welcomes customers into the bank, where they can take an elevator to the second floor or continue on into a lobby accented by rich mahogany furnishings, marble tops on the teller line and work tables, teal carpets and wine-colored seating.

Local artwork is featured throughout the building, behind the teller line and in the two conference rooms.



The spacious ground floor lobby of Wachovia's new Thruway Banking Center features nine teller stations, an expanded commercial deposit area and private booths for use by safe deposit customers. The lobby is bordered by Personal Banker offices and a large conference room.



The second floor Private/Business Banking offices offer customers a pleasant, relaxed atmosphere to conduct business.

New Building Features Local Artists

Given Winston-Salem's reputation as a city where the arts thrive, it seemed only natural that Wachovia would commission some of the city's finest artists to produce special works for the new Thruway Banking Center.

could relate to, things in their own neighborhoods."

With that charge, Margaret Newsome, a member and director of the Associated Artists of Winston-Salem, was asked to produce three works for display in the bank's most visible location — behind the teller line. Newsome, who received a degree in art and history from Salem College, painted scenes depicting Reynolda Gardens, the greenhouse at Reynolda House, and Runnymede, a park and residential area of the city's Buena Vista section.

Newsome enjoys the medium of pastels and developed her landscape painting style because of her overall interest in the North Carolina landscape. She has a diverse art background ranging from a secondary teaching certificate in art and history, to experiences in the world of commercial art and advertising.

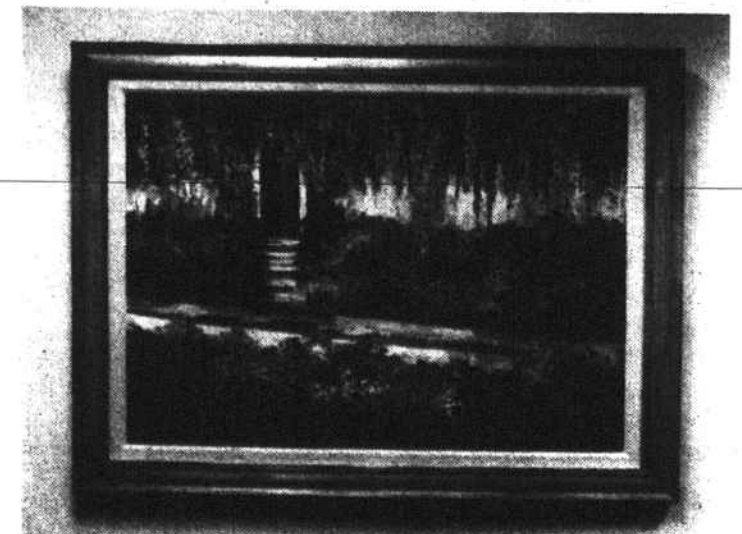
Nicholas B. Bragg, executive director of the Reynolda House Museum of American Art in Winston-Salem, created an original work in oil which is displayed in Thruway's first floor conference room.

The second floor conference room contains three works by another Winston-Salem artist, Carrie Chamberlain D. Davis, a former Reynolda House artist-in-residence at the Reynolda Learning Center in Critz, Va. Those paintings depict Reynolda House,

Wake Forest University's Graylyn Conference Center and the Buena Vista neighborhoods.

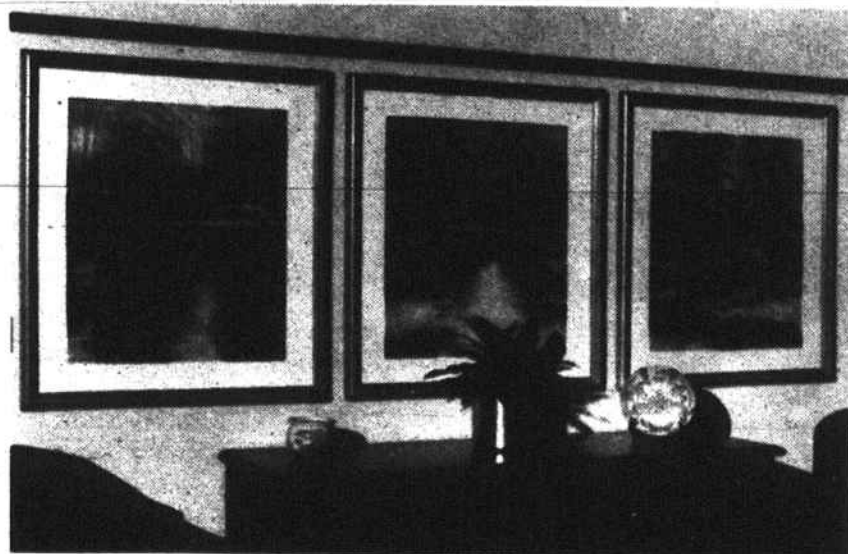
Other area artists whose works are displayed throughout

the building are Barrie Van Osdell, who began drawing at five years of age and has had no formal training; Elaine Day Dowdell, also a member of the Associated Artists of Winston-Salem; Colleen Stadler of Reidsville, whose paintings



This oil painting by Gene Hege is one of the many original works by local artists featured at Thruway.

are also in the corporate collections of Fieldcrest Cannon Inc., Miller Brewing Company and other local businesses; and Gene Hege, a graduate of the Washington School of Art.



Wachovia has been investing in the works of both professional and amateur artists and craftsmen for more than 25 years. The collection's more than 18,000 pieces include paintings, tapestries and pottery.

"The Thruway branch is one of the nicest bank buildings in town," says Wachovia's in-house designer, Gina Griffin. "We wanted the decor to include paintings of scenes that people here