

# CLASSIC CADILLAC GMC TRUCKS

## '93 Clearance CLOSEOUT!

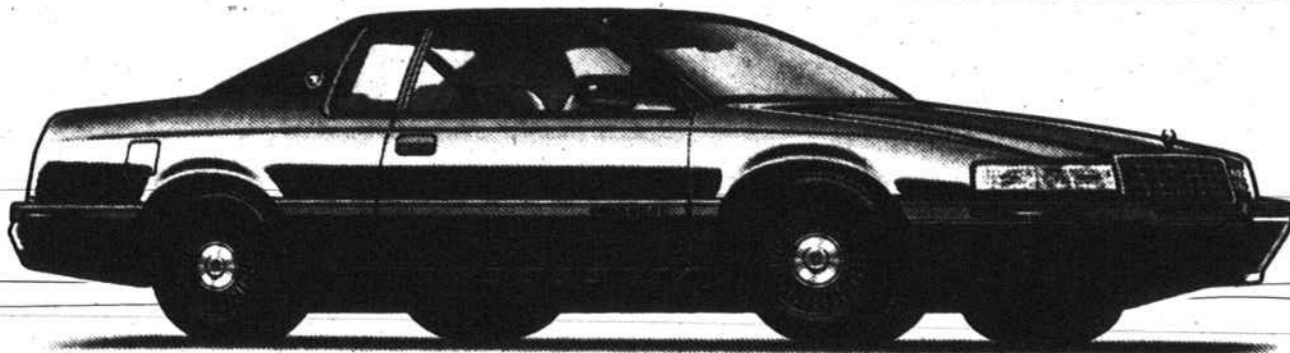
**THIS WEEKEND ONLY!**

ALL NEW AND USED CADILLACS, GMC TRUCKS, AND CONVERSION VANS MUST GO TO MAKE ROOM FOR 94'S ARRIVING DAILY!

VEHICLES WILL BE SOLD ON A FIRST COME FIRST SERVE BASIS!!

### '93 CADILLAC ELDORADO

WITH SPORT APPEARANCE PACKAGE STK#C3173  
INCLUDES AUTO, DAY/NIGHT MIRROR, PWR. LUMBAR SUPPORTS AND LEATHER SEATS



**YOUR CHOICE!**  
LEASE FOR **\$463.45** PER MO.\*  
OR DRIVE OUT FOR 24 MONTHS!  
**\$11,295.80**\*\*  
(ONE PAYMENT PRICE)

\*24 MO. SMARTLEASE WITH 1ST MO. PAYMENT TAGS, \$475 SECURITY DEPOSIT AND \$2500 DOWN. TOTAL PAYMENTS \$11,122.80. RESIDUAL \$22,321.12. 12,000 MILES A YEAR ALLOWED. 12 CENTS PENALTY FOR EXCESS MILES. \*\*24 MONTH SMART LEASE PLUS WITH \$2500 DOWN PLUS TAGS. TOTAL OF PAYMENTS \$11,295.80. RESIDUAL \$22,321.12. 12,000 MILES A YEAR ALLOWED. 12 CENTS PENALTY EACH MONTH FOR EXCESS MILES.

### '93 SONOMA CLOSEOUT SALE!

'94's WILL COST MUCH, MUCH MORE!

SLE PACKAGE, 200 HORSE POWER ENGINE, A/C, TILT WHEEL, INTERMITTENT WIPERS, SPORT SUSPENSION, CRUISE, AUTO, SPLIT BENCH SEAT. #T3101



MSRP \$13,743.00  
**\$154.48 PER MO.\***

\*PAYMENTS BASED ON GMAC SMARTBUY WITH 20% DOWN IN CASH OR TRADE AND REBATES TO DEALER. BUYOUT AMOUNT AT 48 MONTHS IS \$4,442.29. TOTAL OF PAYMENTS \$12,358.40

### '93 CONVERSION VAN SALE!

AMERICA'S #1 TIARA MOTORCOACH, PRESIDENTIAL MODEL ONLY 500 BUILT! STK#T3178 DISCOUNT OF



**\$9635**

\*ALL REBATES TO DEALER.

## USED CAR CLEARANCE CLOSEOUT!

<p><b>'84 CADILLAC SEDAN DEVILLE</b> YELLOW W/YELLOW LEATHER INTERIOR, FULLY EQUIPPED LOCAL TRADE-IN #P308A WAS \$4995 NOW <b>\$2995</b></p>	<p><b>'89 DODGE D 150</b> V8, A/C, AM/FM, BLUE, 5 SP. VERY NICE. #P272A, LOCAL TRADE, WAS \$6995 NOW <b>\$3995</b></p>	<p><b>'89 CADILLAC FLEETWOOD</b> BLUE W/ BLUE LEATHER, LOCAL, ONE OWNER, NEW CAR TRADE, #P310A, 67K MILES, WAS \$13,995 NOW <b>\$11,500</b></p>	<p><b>'90 DELTA 88 ROYALE BROUGHAM</b> WHITE W/BUE VELOUR, LOCAL ONE OWNER CADILLAC TRADE-IN, 31K MILES LIKE NEW #P324A WAS \$13,995 NOW <b>\$11,995</b></p>
<p><b>'90 CADILLAC SEVILLE</b> WHITE W/RED LEATHER INT., 47,000 MILES, FULLY EQUIPPED. STK#P305 WAS \$17,995 NOW <b>\$15,995</b></p>	<p><b>'91 CADILLAC SEDAN DEVILLE</b> WHITE/BLUE LEATHER, 36K, LOCAL, 1 OWNER TRADE, #C3223A WAS \$19,995 NOW <b>\$17,995</b></p>	<p><b>'92 BUICK PARK AVE.</b> BURGUNDY/GRAY INT., FULLY EQUIPPED, LOCAL CADILLAC TRADE-IN #C3229A, WAS \$19,995 NOW <b>\$17,995</b></p>	<p><b>'91 CADILLAC ELDORADO</b> RED W/ TAN LEATHER, SEE TO APPRECIATE, #P322 WAS \$22,995 NOW <b>\$20,995</b></p>
<p><b>'92 CADILLAC SEDAN DEVILLE</b> BLACK/RED LEATHER, 17K, FULLY EQUIPPED. #P309 WAS \$23,995 NOW <b>\$21,995</b></p>	<p><b>'93 CADILLAC SEDAN DEVILLE</b> GM PROGRAM CAR, RED/RED LEATHER, 22,588 MILES. #P289 WAS \$25,795 NOW <b>\$22,995</b></p>	<p><b>'93 CADILLAC SEDAN DEVILLE</b> 20,000 MILES, WHITE/RED LEATHER, FULLY EQUIPPED. #P284A WAS \$26,995 NOW <b>\$23,995</b></p>	<p><b>'93 CADILLAC SEDAN DEVILLE</b> PROGRAM CAR, WHITE W/ TAN LEATHER INT, 21K MILES, FACTORY WARRANTY. #P323, WAS \$25,995 NOW <b>\$23,500</b></p>
<p><b>'92 CADILLAC ELDORADO</b> WHITE W/BLUE LEATHER, LOCAL ONE OWNER, 17,000 MILES, SEE TO APPRECIATE. #P297A, WAS \$29,995 NOW <b>\$27,995</b></p>	<p><b>'92 CADILLAC SEVILLE</b> SLATE GREEN W/ TAN LEATHER INT., ONE OWNER, FACTORY WARRANTY, LIKE NEW, 37K MILES. #P326, WAS \$29,995 NOW <b>\$27,995</b></p>	<p><b>'93 FLEETWOOD BROUGHAM</b> 14K MILES, BLUE W/ BLUE LEATHER, LOCAL, ONE OWNER. #P315 WAS \$29,995 NOW <b>\$27,995</b></p>	<p><b>'92 CADILLAC STS</b> GOLD DIAMOND, 16,000 MILES, TAN LEATHER, SUNROOF, SEE &amp; DRIVE TO APPRECIATE. #P312, WAS \$34,995 NOW <b>\$33,995</b></p>



Cadillac... Changing the way you think about American automobiles. Classic Cadillac... Changing the way they're sold and serviced.



**7726 North Point Blvd., Winston Salem • (919)759-2239**

SALES HOURS: MON-FRI 8:30AM-7PM, SATURDAY 9AM-4PM • SERVICE HOURS: MON-FRI 7:30AM-5:00PM