

Memorial Day Weekend

500

500 Cars And Trucks In Stock And All Priced With The One Price/The Best Price!

**FREE
HOT-DOGS
& PEPSI**

**GAMES FOR KIDS
STARWALK,
FACE
PAINTING**

**6.9%
FINANCING
ON APPROVED CREDIT**

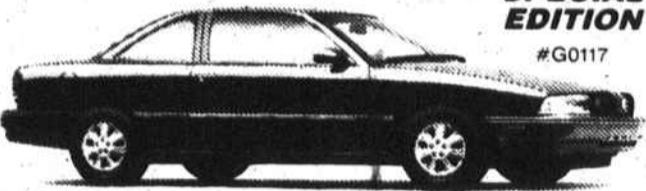
**DOOR PRIZES!
• SOUTHERN 500
TICKETS
• ACC TOURNAMENT
TICKETS**

FLOW OLDSMOBILE

1994 OLDSMOBILE ACHIEVA

SPECIAL EDITION

#G0117



• Auto • A/C • Power Door Locks • Air Bag • ABS Brakes • Delco AM/FM Stereo
4 Spk Sys. • Contour Front Bucket Seats • Power Steering • Floor Mats •
Electric Rear Defogger • Bolt-on Wheel Covers • Tinted Glass

BUY FOR
\$13,995

LEASE FOR
\$229 for 36 months

36 month closed end lease with option to purchase at lease end for \$13,995. Total of payments \$8243.64. \$1475.00 down payment. 1st payment refundable security deposit taxes and license due at delivery. On approved credit.

1994 OLDS CIERA 4-DR.

#G0006



• Automatic • A/C Conditioning • Drivers Side Air Bag • ABS Braking • Power
Locks • Tilt • Rear Defogger

BUY FOR
\$13,995

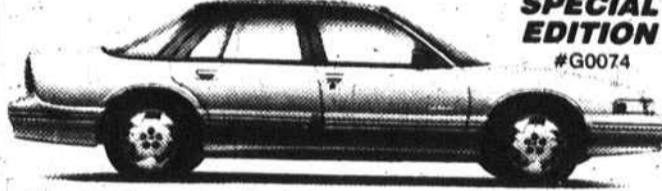
LEASE FOR
\$229 for 36 months

36 month closed end lease with option to purchase at lease end for \$13,995. Total of payments \$8243.64. \$1475.00 down payment. 1st payment refundable security deposit taxes and license due at delivery. On approved credit.

1994 OLDSMOBILE SUPREME

SPECIAL EDITION

#G0074



• Power Windows • Floor Mats • Cruise Control • Power Mirrors • AM/FM
Cassette • Sport Luxury Package • Drivers Side Air Bag • Anti Lock Brakes
• 3100 SF V6 Engine • Electronic Shift Four Speed Auto-Trans • Tilt Wheel
• Power Rack Pinion Steering • Rear Defogger • Soft Ray Tinted Glass • Engine
Oil Level Monitor.

BUY FOR
\$17,195

LEASE FOR
\$268 for 36 months

36 month closed end lease with option to purchase at lease end for \$17,195. Total of payments \$9655.92. \$2000 down payment. 1st payment, tax refundable security deposit property tax and license due at delivery. On approved credit.

1994 OLDSMOBILE EIGHTY EIGHT

#G0051



• Power Windows • Power Locks • Cruise Control • AM/FM Stereo Cassette
• Aluminum Wheels • Power Drivers Side Seat • Power Mirrors • Driver &
Passenger Air Bags • ABS Brakes • 5.5-4.5 Front Seat • Power Steering •
Automatic Transmission • 3800 V6 Engine • Floor Mats

BUY FOR
\$19,995

LEASE FOR
\$298 for 36 months

36 month closed end lease with option to purchase at lease end for \$19,995. Total of payments \$9655.92. \$2000 down payment. 1st payment, tax refundable security deposit property tax and license due at delivery. On approved credit.

FLOW CHEVROLET

1994 GEO PRIZM

#4435



• Air Conditioning • Dual Air Bags
• AM/FM Stereo • Rear Child Sec. Door Locks
• 1.6 Ltr. Dual Overdrive Cam • Pwr Front Disk Brakes
• 16 Valve Fuel Injection • All Season Steel Radial Tires
• Tinted Glass • Dual Remote Outside Mirrors

LEASE FOR:
\$179 for 36 months

36 month closed end lease with option to purchase at lease end for \$6922.80. Total of payments \$6444. \$179 down payment. 1st payment refundable security deposit taxes and license due at delivery. On approved credit. * prepaid property tax

1994 CHEVROLET CAMARO RS

#4666

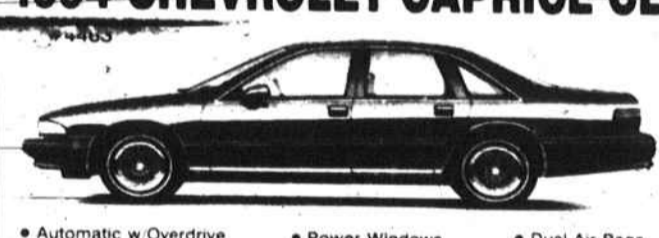


• Overdrive Transmission • Body Side Molding
• Air Conditioning • Dual Air Bags
• AM/FM Cassette Stereo • ABS Braking
• Cruise Control • Remote Hatch Release
• Fog Lamps

ONE BEST PRICE
\$14,999

36 month closed end lease with option to purchase at lease end for \$14,999. Total of payments \$14,999. \$14,999 down payment. 1st payment refundable security deposit taxes and license due at delivery. On approved credit.

1994 CHEVROLET CAPRICE CL



• Automatic w/Overdrive • Power Windows
• V-8 Engine • Driver Side Air Bag
• Air Conditioning • Power Locks
• AM/FM Cassette • Tilt Wheel
• Cruise Control

ONE BEST PRICE
\$16,959

36 month closed end lease with option to purchase at lease end for \$16,959. Total of payments \$16,959. \$16,959 down payment. 1st payment refundable security deposit taxes and license due at delivery. On approved credit.

1994 CORVETTE

#4339



• Air Conditioning • Cruise Control/Tilt
• Dual Air Bags • Anti-Lock Braking
• Automatic w/Overdrive • Leather Bucket Seats
• Trans. • Power Locks
• AM/FM Cassette • Power Windows

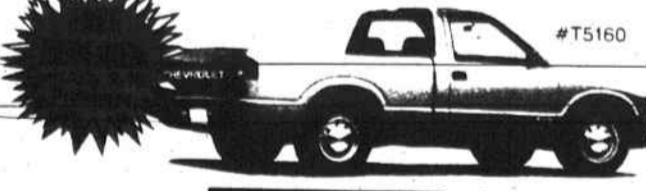
ONE BEST PRICE
\$28,999

36 month closed end lease with option to purchase at lease end for \$28,999. Total of payments \$28,999. \$28,999 down payment. 1st payment refundable security deposit taxes and license due at delivery. On approved credit.

1994 CHEVROLET S-10

W/AIR CONDITIONING

• AM/FM Cassette • ABS Braking • Rear Step Bumper
• W/Clock • Power Steering • Floor Carpeting



BUY FOR:
\$199 DOWN \$199 MONTH

60 month contract with \$199 down cash or trade with a 5% APR. Total of payments \$12,078. Tax, tags and \$89 invoicing fees extra. On approved credit.

OR:
ONE BEST PRICE
\$9899
After Rebate

1994 CHEVROLET S-10

EXTENDED CAB LS

#T5388



• Overdrive Transmission • Deluxe Cloth Seating
• AM/FM Cassette Stereo • ABS Braking
• Tachometer • 3 Yr. • 36,000 Mile Warranty

ONE BEST PRICE
\$10,849
After Rebate

36 month closed end lease with option to purchase at lease end for \$10,849. Total of payments \$10,849. \$10,849 down payment. 1st payment refundable security deposit taxes and license due at delivery. On approved credit.

1994 CHEVROLET ASTRO CS

#T5031



• Automatic w/Overdrive • Tilt Wheel
• Cruise Control • Driver Side Air Bag
• Air Conditioning • Power Windows
• AM/FM Stereo Cassette • High Back Bucket Seats
• Luggage Carrier • ABS Braking

ONE BEST PRICE
\$17,579
After Rebate

36 month closed end lease with option to purchase at lease end for \$17,579. Total of payments \$17,579. \$17,579 down payment. 1st payment refundable security deposit taxes and license due at delivery. On approved credit.

1994 CHEVROLET G-20 MARK

III CONVERSION VAN

#T5020



• Low top • Automatic w/OD • AM/FM Cassette • Air Conditioning
• Power Windows • Power Locks • Tilt • Cruise • ABS Braking
• Air Bag • Real Sofa Bed

ONE BEST PRICE
\$18,359
After Rebate

36 month closed end lease with option to purchase at lease end for \$18,359. Total of payments \$18,359. \$18,359 down payment. 1st payment refundable security deposit taxes and license due at delivery. On approved credit.

PROGRAM CARS

- 1993 CHEVROLET CORSICA \$9999
- 1993 BUICK SKYLARK \$11,599
- 1993 OLDSMOBILE ACHIEVA \$11,599
- 1993 PONTIAC GRAND AM \$11,599
- 1993 OLDS CUTLASS CIERA \$11,999
- 1993 CHEVROLET LUMINA EURO \$12,599
- 1993 PONTIAC GRAND PRIX \$12,599

ONLY \$499 DOWN/UNDER \$200 PER MONTH

1993 PONTIAC SUNBIRD LE \$18088

OVERSTOCKED CARS

- 1993 TOYOTA YARIS \$9399
- 1993 LINCOLN TOWN CAR \$8299
- 1993 BUICK PARK AVENUE \$10,599

FAMILY CARS

- 1993 CHEVY CORSIKA \$5999
- 1991 CHEVY CAVALIER RS \$7999
- 1993 CAMARO Z28 \$18,599
- 1994 CHEVY CAMARO Z28 6 SPEED \$20,499

SPORTS CARS

- 1990 NISSAN MAXIMA SE \$12,999
- 1993 HONDA ACCORD LX 4 DR. \$14,999
- 1993 CHEVY CAPRICE WAGON \$16,999

4X4 TRUCKS & SPORT UTILITY

- 1991 CHEVY CORVETTE \$22,999
- 1992 CHEVROLET CORVETTE \$26,999
- 1992 GHO TRACKER 4X4 CONVERTIBLE \$10,599
- 1993 CHEVY BLAZER \$15,999
- 1994 CHEVY BLAZER 4 DR. 4X4 \$18,599

2 WHEEL DRIVE TRUCKS/VANS

- 1989 FORD RANGER \$5499
- 1990 CHEVY S10 PICKUP \$6799
- 1991 FORD RANGER XLT LONG BED \$7599
- 1985 CHEVY SUBURBAN 1/2 TON \$8999
- 1990 OLDS SILHOUETTE VAN \$10,399
- 1992 MAZDA MPV VAN \$13,999
- 1992 DODGE CARAVAN SE \$14,999
- 1993 CHEVROLET SUBURBAN \$23,599



Find The Facts Fast By Phone!

- ONE BEST PRICE on the vehicle you are interested in.
- The Kelly Blue Book value of your trade in.
- Your monthly payment.

1-800-550-FLOW