


PARKWAY FORD'S 1st SUMMER SALE

LOWEST INTEREST RATE OF THE YEAR
OFFER EXPIRES JULY 12, 1994
2.9% APR
48 MONTHS
ON ALL 1994 PROBES



1994 ESCORT 3 DOOR



- AM/FM Cassette

YOUR CHOICE

\$10,500
AFTER REBATE

1994 ESCORT 4 DOOR



- 321 Package

1994 ESCORT WAGON



- Dual Air Bags

1994 THUNDERBIRD LX



- DUAL AIR BAGS
- AUTOMATIC OVERDRIVE • CFC FREE-AIR CONDITIONING
- 3.8 V-6 • POWER WINDOWS • POWER SEAT • CAST ALUMINUM WHEELS • SPEED CONTROL • AM/FM CASSETTE
- REAR WINDOW DEFROSTER • KEYLESS ENTRY

\$16,500
AFTER REBATE

1994 ESCORT 5 DOOR



- Air Conditioning

- 1.9 EFI Engine
- Light and Convenience Group

1994 TAURUS GL



- 3.0 V-6 ENGINE • AUTOMATIC • OVERDRIVE • AIR CONDITIONING • AM/FM CASSETTE • SPEED CONTROL

\$15,975
AFTER REBATE

1994 RANGER XLT



- 864E PACKAGE • AM/FM • AIR CONDITIONING • SLIDING REAR WINDOW • OWL TIRES • CHOICE OF COLORS • CAST ALUMINUM WHEELS • AM/FM CASSETTE

\$10,900
AFTER REBATE

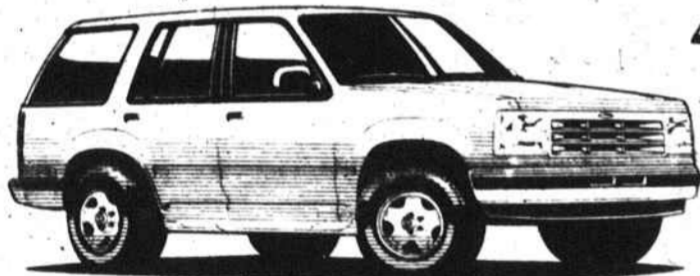
1994 BRONCO XLT



- AIR CONDITIONING • 5.8 LITER EFI V-8 • CHROME WHEELS
- REAR DEFROSTER • POWER LOCKS • POWER WINDOWS
- AM/FM CASSETTE • 4 SPEED AUTOMATIC • PRIVACY GLASS

\$21,999
AFTER REBATE

1994 FORD EXPLORER XLT 4X4



- 4.0 LITRE ENGINE • AUTOMATIC TRANSMISSION • TRAILER TOWING PACKAGE • LUGGAGE RACK • AIR CONDITIONING
- AM/FM CASSETTE W/ PREMIUM SOUND
- ALL TERRAIN TIRES • REAR DEFROSTER

\$23,699
AFTER REBATE

1994 F-150 XL



- 4.9 EFI 6 CYL. • AM/FM STEREO • 5-SPEED OVERDRIVE
- STEP BUMPER • 6250 GVW

\$12,987
AFTER REBATE

1994 AEROSTAR



- 7 PASSENGER • DUAL CAPTAINS CHAIRS • AIR CONDITIONING
- SPEED CONTROL • TILT WHEEL • AUTOMATIC • AM/FM CASSETTE • LUGGAGE RACK • REAR DEFROSTER

\$16,499
AFTER REBATE

FREE ROAD-SIDE ASSISTANCE WITH EVERY 1994 FORD

PRE-OWNED VEHICLES

CARS	
'91 DODGE STEALTH RT #1327A Bright red, V6, auto, A/C, leather, loaded, 19,000 mi.	\$18,995
'93 FORD PROBE G.T. V6, 5 spd., A/C, PW, PL, stereo, #1222A	\$16,995
'93 FORD T-BIRD LX #1527A V6, auto, A/C, sunroof, all power	\$15,995
'92 FORD MUSTANG G.T. #1873A V6, 5 spd., A/C, leather, bright red, 18,000 mi.	\$14,995
'92 TAURUS STA. WAGON GL #1722A V6, auto, A/C, PW, PL	\$13,995
'92 NISSAN 240 SX #1429A 4 cyl., 5 spd., A/C, stereo, bright red	\$13,995
'91 FORD MUSTANG LX CONV. #1628A Auto, A/C, PW, PL	\$12,995
'89 NISSAN MAXIMA 4 DR. #75526A Auto, A/C, PW, PL	\$11,995
1993 FORD ESCORT LX STA. WAG. #11977A Auto, A/C, PW, PL, 14,000 mi.	\$11,995
'90 FORD T-BIRD LX #1815A V6, auto, A/C, PW, PL	\$10,995
'92 FORD MUST. LX CPE #1843A 4 cyl., 5 spd., A/C, PW, PL	\$10,995
'91 HONDA CIVIC DX 4 DR 5 spd., A/C, stereo, #1125A	\$9,995
'93 TOYOTA TERCEL 4 spd., A/C, AM & FM, #1428A	\$9,995
'92 NISSAN SENTRA XE 4 DR #75494A Auto, A/C, stereo	\$9,995
'93 FORD ESCORT LX 4 DR #U1974 5 spd., A/C, stereo	\$9,995
'93 FORD ESCORT LX 2 DR T531A 5 spd., A/C, stereo	\$9,995
'87 FORD T-BIRD #1830A V6, auto, A/C, sunroof, PW, PL	\$6,995

'91 FORD ESCORT LX 2 DR. #1685A 5 spd., A/C, stereo	\$6,995
'88 FORD MUSTANG LX COUPE 1776A 4 cyl., 5 spd., A/C, 44,000 mi.	\$5,995
'91 FORD FESTIVA L 2 DR 5 spd., stereo, bright red, #1327A	\$4,995
'86 OLDS DELTA 88 ROYALE 4 DR #1584A V6, auto, A/C	\$4,995
'90 G.E.O. METRO #T5533A 5 spd., stereo	\$3,995

TRUCKS	
1994 F-150 XLT 4x4 #1854A 351 V6, auto, A/C, loaded w/equip, 12,000 miles	\$21,995
'93 FORD F-150 XLT #T5637A V6, auto, A/C, PW, p. locks	\$15,995
'91 TOYOTA 4X4 PICKUP #T5299A 4 cyl., 5 spd., A/C, Bright Red	\$13,995
'90 FORD F-150 XLT LARIAT #T4975A V6, auto, A/C, PW, PL, 27,000 miles	\$13,995
'92 FORD F-150 XLT 6 cyl., 5 spd., A/C, stereo, #T5527A	\$11,995
'93 FORD F-150 XL S-BED #T4479A 6 cyl., 5 spd., AM/FM	\$11,995
'92 CHEV. S-10 PICKUP #1747AA V6 5 spd., A/C, stereo	\$9,995

'92 FORD RANGER XLT #1825A V6 5 spd., A/C, stereo, #12000 mi.	\$12,995
'92 CHEV. S-10 PICKUP #1747AA V6 5 spd., A/C, stereo, #12000 mi.	\$12,995
'91 DODGE DAKOTA #T4453A 4 cyl., 5 spd., PS, #12000 mi.	\$12,995

SPORTS UTIL/VANS	
'93 FORD EXPLORER XLT 4X4 #1722A V6, auto, A/C, PW, PL	\$23,995
'92 FORD EXPLORER XLT 4 DR #1722A V6, auto, A/C, PW, PL	\$23,995
'92 FORD EXPLORER XL 2 DR. #1722A V6, auto, A/C	\$23,995
'92 FORD AEROSTAR XL #1491A V6, auto, A/C, PW, PL	\$16,995
'90 MAZDA MPV 4x4 #1722A V6, auto, A/C, PW, PL	\$16,995
'89 FORD AEROSTAR 7 PASS. #1491A V6, auto, A/C, PW, PL	\$16,995
'91 GEO TRACKER CONV. #1747A 5 spd., A/C, stereo, #12000 mi.	\$16,995

PROGRAM CARS AND TRUCKS

1993 SABLE G.S. OR 1993 TAURUS GL
3 TO CHOOSE FROM
• V-6 • Auto • A/C • PW • PL • PS • Tilt • Cruise • Stereo • Elect. Window Def.

1993 FORD AEROSTAR EXT XLT
V6, auto, high cap., air, p. windows, p. locks, tilt, cruise, stereo w/cass.

2 - 1993 FORD THUNDERBIRD
Tilt, cassette, cruise, p/seat, V6, auto, A/C, p/locks, p/windows, stereo w/cass., r/def., alloy whls.

2 - 1993 FORD MUSTANG LX CONV.
4 cyl., auto, A/C, PW, PL, stereo, w/cass., cruise.

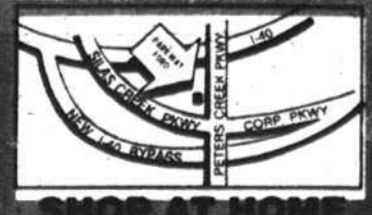
12 - 1993 FORD TEMPO G.L. 4 DR.
4 cyl., auto, A/C, p/seats, p/windows, PL, stereo w/cass.

1 - 1993 FORD MUSTANG LX
4 cyl., auto, A/C, PW, PL, stereo w/cass.

1994 FORD TAURUS GL 4 DR
V6, auto, A/C, PW, PL, p. seats, stereo w/cass., air bag, elec. r. def., tilt, cruise.

1994 FORD TEMPO GL 4 DR
Auto, A/C, PW, PL, p. seat, stereo w/cass., elec. r. def., tilt, cruise.

CREDIT PROBLEMS? LOAN APPROVED!!
Parkway Ford recently made arrangements with a large finance company to obtain special financing for people with some of the following situations: (Bankrupt, F. real estate, Repossession, Slow Credit, etc.)
You are encouraged to apply for this special program regardless of your prior credit history.
To qualify for this special program call today!
Call 724-5921 or 1-800-467-2469 ask for EARL CLOPTON



PARKWAY FORD
2104 PETERS CREEK PARKWAY, WINSTON-SALEM

30
YEARS OF
AUTOMOTIVE
EXCELLENCE