



# Santa's Helpers' Sale

**YEAR-END CLEARANCE ON ALL 1995 TAURUS'S**

**2.9% APR**  
 Save Over \$4,109  
 In Finance Charges  
 On Ford Taurus!  
**1995 TAURUS GL**



- POWER DRIVER'S SEAT
- 3.0 EFI ENGINE
- AUTOMATIC OVERDRIVE
- KEYLESS ENTRY SYSTEM
- POWER WINDOWS
- POWER LOCKS
- AM/FM CASSETTE
- SPEED CONTROL

**\$16,999**  
 AFTER REBATE

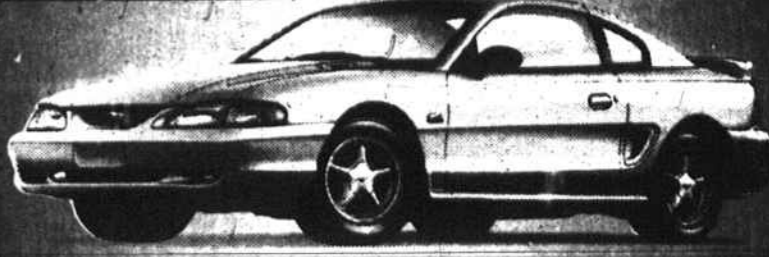
**1995 MUSTANG GT CONVERTIBLE**  
**\$2,500 DISCOUNT!**



- SPEED CONTROL
- AIR COND.
- ANTI-LOCK BRAKES
- 4-WAY POWER DRIVERS SEAT
- 5.9 HO ENGINE
- 5 SPEED
- REMOTE KEYLESS ENTRY
- AM/FM CASSETTE W/PREMIUM SOUND
- REAR DEFROSTER

**1995 MUSTANG GT**

**\$2,000 DISCOUNT!**



- 5.0 HO ENGINE
- 5 SPEED
- REMOTE KEYLESS ENTRY
- AIR CONDITIONING
- AM/FM CASSETTE W/PREMIUM SOUND
- SPEED CONTROL
- ANTI-LOCK BRAKES
- POWER DRIVER'S SEAT
- REAR DEFROSTER

**NEW '94 SHERROD CONVERSION VAN**  
 LIST PRICE - \$30,114<sup>00</sup>



- 5.0 V-8 ENGINE
- COLOR TV W/REMOTE
- FRONT AND REAR AIR CONDITIONING
- AUTOMATIC OVERDRIVE
- POWER WINDOWS
- POWER DOOR LOCKS
- ANTILOCK BRAKES
- QUAD CAPTAIN CHAIRS
- CAST ALUMINUM WHEELS
- RUNNING BOARDS

**NOW ONLY \$19,995**  
 AFTER REBATE

**1994 FORD RANGER XLT**



- AIR CONDITIONING
- AM/FM CASSETTE
- POWER STEERING
- SUPER ENGINE COOLING
- CHROME REAR STEP BUMPER
- CAST ALUMINUM WHEELS
- SLIDING REAR WINDOW
- 2.3 EFI ENGINE
- 5 SPEED

**\$10,475**  
 AFTER REBATE

**1995 WINDSTAR GL**



- 4 Speed Automatic Overdrive
- 3.8 Liter SEFI Engine
- Speed Control
- Tilt Wheel
- Two Tone Paint
- Air Conditioning
- Privacy Glass
- Remote Keyless Entry
- Power Windows
- Power Locks
- Luggage Rack
- Floor Mats
- AM/FM Cassette
- Rear Defroster

**\$9,999**

**1995 THUNDERBIRD LX**  
 "THE BIRD TURNS 40!"



- AUTOMATIC
- OVERDRIVE
- CFC FREE-AIR CONDITIONING
- POWER WINDOWS
- CAST ALUMINUM WHEELS
- AM/FM CASSETTE
- REAR WINDOW DEFROSTER
- KEYLESS ENTRY
- 4.6 EFI ENGINE
- HEAVY-DUTY BATTERY

**\$16,999**

**1994 PROBE**



- AIR CONDITIONING
- INTERMITTENT WIPERS
- DUAL ELECTRIC MIRRORS
- AM/FM CASSETTE W/PREMIUM SOUND
- TILT STEERING
- 2.0 DOHC ENGINE

**AUTOMATIC**

**\$9,999**  
 AFTER REBATE

**1995 AEROSTAR XLT VAN**



- V-6
- AIR CONDITIONING
- AUTOMATIC OVERDRIVE
- SPEED CONTROL
- TILT
- REAR DEFROSTER
- AM/FM CASSETTE
- LUGGAGE RACK
- PRIVACY GLASS

**\$9,999**  
 AFTER REBATE

**1994 ESCORT LX 2 DOOR OR 4 DOOR**



- AIR CONDITIONING
- AIR BAG
- 1.9 EFI ENGINE
- 5 SPEED
- AM/FM CASSETTE
- REAR DEFROSTER
- POWER STEERING
- ELECTRIC SIDE MIRRORS

**\$10,500**

**PARKWAY FORD'S CUSTOMER ADVANTAGES**



**3 YEAR 36,000 MILE NEW CAR WARRANTY**  
**SATURDAY SERVICE 8AM-2PM**

**FREE PHONE WITH CAR PURCHASE**

**13 YEARS IN A ROW OVER 30 YEARS OF EXCELLENCE**

**FREE ROAD-SIDE ASSISTANCE**

**90-DAY 3,000 MILE USED CAR WARRANTY**

**SHOP AT HOME 1-800-467-2469**

**PRE-OWNED VEHICLES**

**CLEARANCE ON ALL PROGRAM VEHICLES**

**CARS**

'94 FORD CROWN VICT. LX 4 DR. #0C285 V-8, auto, A.C., all power, 1K miles.	<b>\$20,995</b>
'94 FORD CROWN VICT. LX 4-DR. #2191A V-8, auto, A.C., all power, alloy whls, 11,000 miles.	<b>\$20,995</b>
'94 FORD MUSTANG GT #T5821B V-6, 5 spd., leather, fully eq. equip.	<b>\$19,995</b>
'94 FORD MUSTANG GT #T6390A V-8, auto, A.C., leather, 925 miles.	<b>\$19,995</b>
'95 FORD TAURUS GL 4 DR. #T5746A V-6, auto, A.C., all power, 3500 mi.	<b>\$17,995</b>
'94 FORD MUSTANG #2365A V-6, 5 spd., A.C., PW, PL.	<b>\$16,995</b>
'93 TOYOTA CAMRY LE 4 DR. #6135A Auto, A.C., PW, PL.	<b>\$16,995</b>
'94 FORD MUSTANG #T6494A V-6, 5 spd., A.C., PW, PL.	<b>\$16,995</b>
'94 FORD PROBE GT #T6649A 43K miles, V-6, 5 spd., A.C., stereo.	<b>\$16,995</b>
'93 FORD PROBE GT #U2073 V-6, 5 spd., A.C., stereo w/cass.	<b>\$15,995</b>
'93 CHEVY CAMARO #2077C Bright red, V-6, 5 speed, cass., 24,000 mi., A.C.	<b>\$15,995</b>
'95 FORD MUSTANG LX #2354A V-6, 5 spd., A.C., stereo.	<b>\$15,995</b>
'93 FORD T-BIRD #1922A V-6, auto, A.C., PW, PL, p. seat.	<b>\$15,995</b>
'93 FORD TAURUS LX 4 DR. #2508A 3.8 V-6, auto, A.C., all power, leather.	<b>\$15,995</b>
'93 NISSAN ALTIMA #T6495A 4 cyl., auto, A.C., PW, PL.	<b>\$15,995</b>
'94 MITSUBISHI ECLIPSE #2199AA Like new, 5 speed, AM/FM, 9,000 mi., A.C.	<b>\$15,995</b>
'92 FORD T-BIRD LX #T6221A A.C., auto, AM/FM cass., 32,000 mi., ground effects pkg.	<b>\$15,995</b>

**TRUCKS**

'93 FORD PROBE #2514A 5spd., A.C., PW, PL.	
'93 FORD TEMPO GL 4-DR. #T3671A Auto, A.C., stereo, PW, PL.	
'93 FORD ESCORT LX 4-DR. #2210A 5spd., A.C., stereo, 1100V miles.	
'93 PLYMOUTH ACCLAIM #T6717A Auto, A.C., stereo, tilt, cruise.	
'92 FORD ESCORT LX 4-DR. #2366AA 5spd., A.C., stereo.	
'92 FORD ESCORT LX 4 DR. #2322A 5spd., A.C., stereo w/cass.	
'87 HONDA ACCORD DX #1842A Auto, A.C., AM/FM cass.	
'88 MAZDA RX7 #T6548A 5 spd., A.C., sunroof.	
'90 CHEVY CORSICA 4-DR. #2415A Auto, A.C., stereo.	

**SPORTS UTIL/VANS**

'93 FORD F-150 PICKUP #25678A 6 cyl., 5 spd., A.C., AM/FM.	
'94 FORD RANGER XLT #2258B 5 spd., A.C., alloy whls.	
'93 FORD RANGER XLT #T6365A 5spd., A.C., stereo, alloy whls.	
'94 FORD RANGER XLT #2258B 5 spd., A.C., stereo, alloy whls.	
'93 FORD RANGER XLT #T6582A 5spd., A.C., cass., alloy whls.	
'93 FORD RANGER XLT #T6728A 6 cyl., 5 spd., A.C., stereo.	
'92 FORD RANGER XLT #T6595C V-8, auto, dual A.C., all power, quad captain chairs.	
'92 FORD RANGER XLT #T6595C V-8, auto, dual A.C., all power, quad captain chairs.	
'93 FORD BRONCO XLT 4x4 #T7000A V-8, auto, A.C., PW, PL.	
'94 FORD E-150 SHERROD CONV. VAN. #2584A V-8, auto, A.C., PW, PL, 753 miles.	
'94 HONDA PASSPORT 4 DR. #T666A V-6, 5 spd., A.C., PW, PL.	
'92 FORD E-150 CHATEAU CLUB WAG #T6959C V-8, auto, dual A.C., all power, quad captain chairs.	
'92 OLDS BRAVADA SMART TRAX #2227B V-8, auto, A.C., PW, PL.	
'94 DODGE CONVER. VAN #2343A 5 cap. chain, like new, 15,000 mi., A.C.	
'91 FORD EXPLORER #U2133 Eddie Bauer, cass., 33,000 mi., A.C.	
'93 FORD AEROSTAR #2307A V-6, auto, A.C., 20,000 mi.	
'90 FORD CONVER. VAN #6661A AM/FM cass., CB radio, TV, quad cap. chairs, dual A.C., 351 eng.	
'91 MAZDA MPV 4 WH DR. #T6610A Auto, A.C., PW, PL.	
'91 CHEVY ASTRO VAN CL #2583A V-8, auto, A.C., PW, PL, 7 pass.	

**14 IN STOCK YOUR CHOICE**

**1994 FORD TAURUS GL OR 1994 MERC. SABLE G.S.**  
 V-6, auto, A/C, PW, PL, PS, stereo/cass., air bag, tilt, cruise, elec. r. def.

**SALE PRICE \$25995 PER MONTH**

\$1500 down plus tax, tag, N.C.I. 9% APR, Amr. fin. \$12,490, TOP \$15,997, Fin. chrg. \$3507.

**3 TO CHOOSE FROM**

**1994 FORD TEMPO GL 4 DOOR**  
 Auto., A/C, PL, PW, AM/FM cass., P. seat, R. def., tilt, cruise.

**SALE PRICE PER MONTH \$16811**

10% Down, 8.99% APR for 60 mo., fin. chg. - \$1986.60, TOP - \$10,086.60. Plus tax, tag, fees on apr. credit.

**1 - 1994 FORD THUNDERBIRD**  
 Tilt, cassette, cruise, p/seat, V-6, auto, A.C., p/locks, p/windows, stereo w/cass., r/def., alloy whls.

**\$15,490**

**3 - 1994 FORD CROWN VICT LX 4 DR**  
 V-8, auto, A/C, PW, PDL, PS, speed control, tilt, elect. rear defog., alloy wheels, stereo w/cass.

**\$18,990 \$17,490**

**MUSTANG CONV. CLEARANCE**

1994 G.T. CONV. Stk# 1866-A Bright Red, 5,800 mi.	<b>\$22,995</b>
1994 V6 CONV. Stk# 2164-A Bright Red, 3,000 mi.	<b>\$19,995</b>
1994 MUSTANG CONV. Stk# 2226A V-6	<b>\$17,990</b>

**3 - 1993 FORD AEROSTAR XL EXT VANS**  
 V-6, auto, high capacity, A/C, PW, PL, stereo w/cass, tilt cruise, lug. rack.

**\$16,990 \$15,990**