

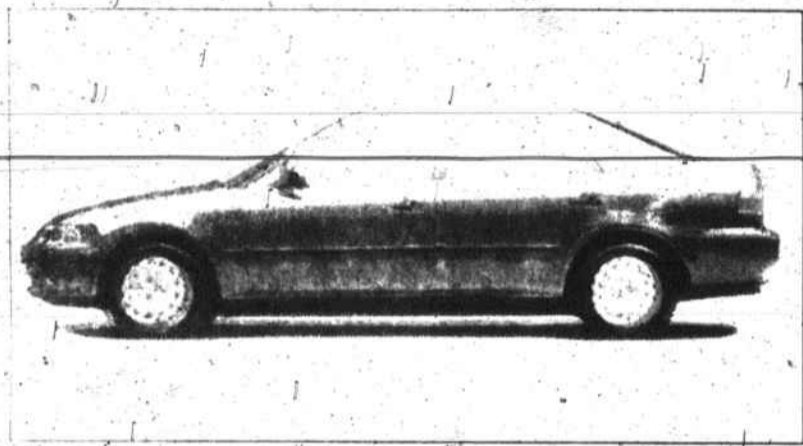
HONDA HOLIDAY

SELL-A-THON

AT FLOW MOTORS' FORSYTH HONDA

YOUR CHOICE!

NEW 1995 CIVIC 4-DOOR SEDAN OR CIVIC COUPE



Stock #6172

- 5 Speed
- 16 Valve Fuel Injected Engine
- Rear Defroster
- Dual Air Bags
- Much More!

BUY FOR ONLY

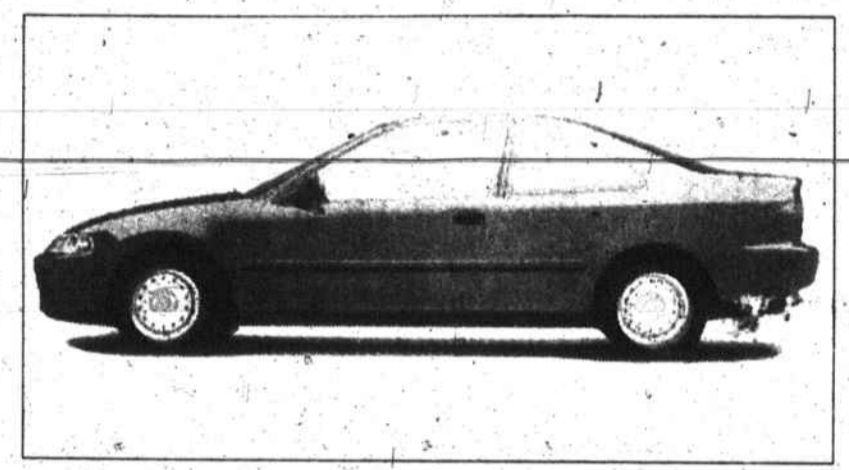
\$11,888

AND PAYMENTS OF ONLY

\$199

Per Month

60 Months at 9.75% APR. 20% down cash or trade. Tax, license, and fees not included. On approved credit.



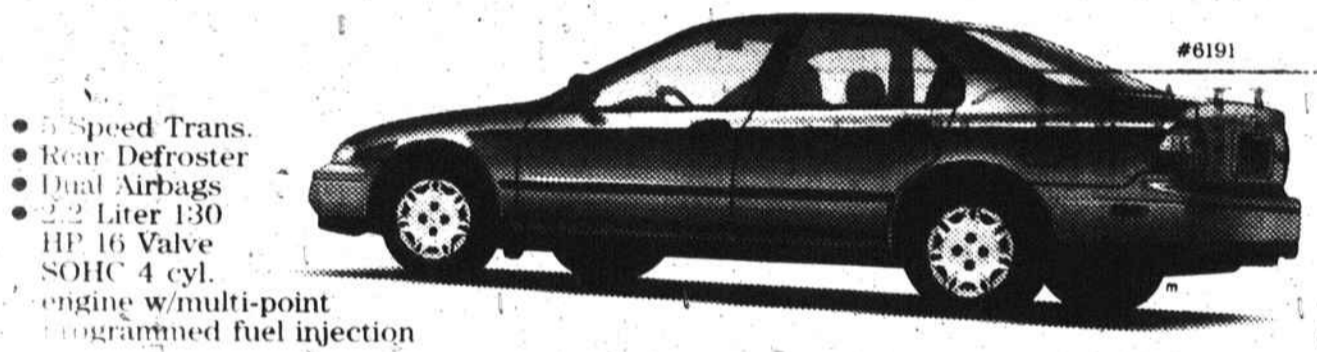
Stock #6159

- 5 Speed
- 16 Valve Fuel Injected Engine
- Rear Defroster
- Dual Air Bags
- Much More!

NEW 1995 ACCORD
4-DOOR SEDAN

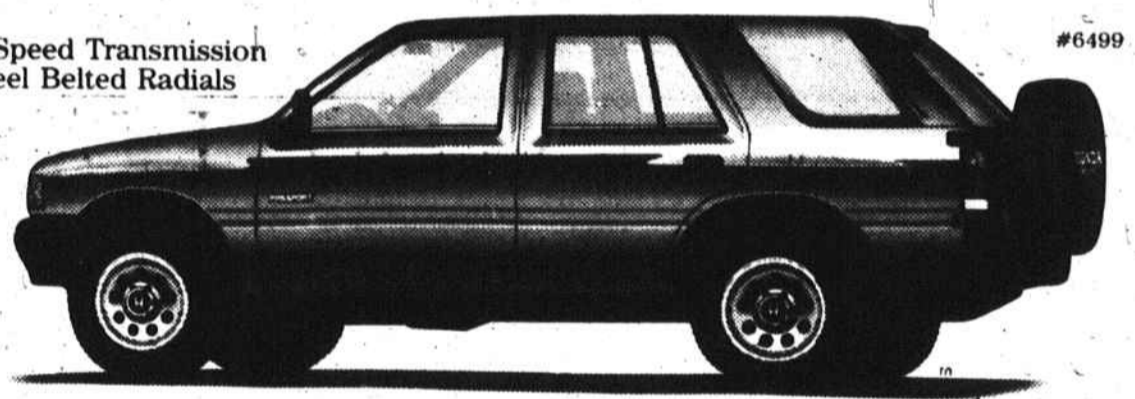
V-6
ACCORD
MODELS
NOW IN
STOCK!

NEW 1995
PASSPORT



#6191

- 5 Speed Trans.
- Rear Defroster
- Dual Airbags
- 2.2 Liter I30 HP 16 Valve SOHC 4 cyl. engine w/multi-point programmed fuel injection



#6499

- 5 Speed Transmission
- Steel Belted Radials

BUY FOR ONLY

\$13,988/

AND PAYMENTS OF ONLY

\$239

PER MO.

60 Months at 9.75% APR. 20% down cash or trade. Tax, license, and fees not included. On approved credit.

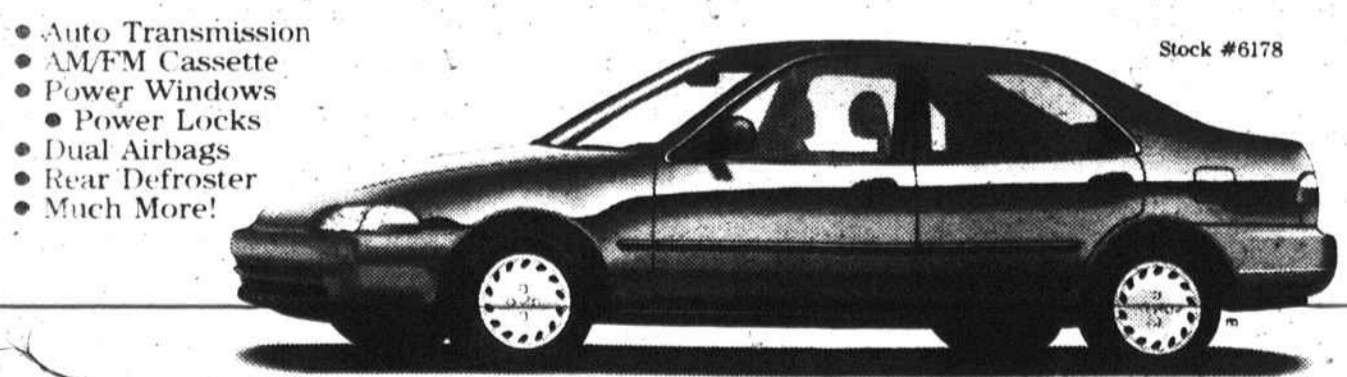
BUY FOR ONLY

\$14,995

NEW 1995 CIVIC
LX SEDAN

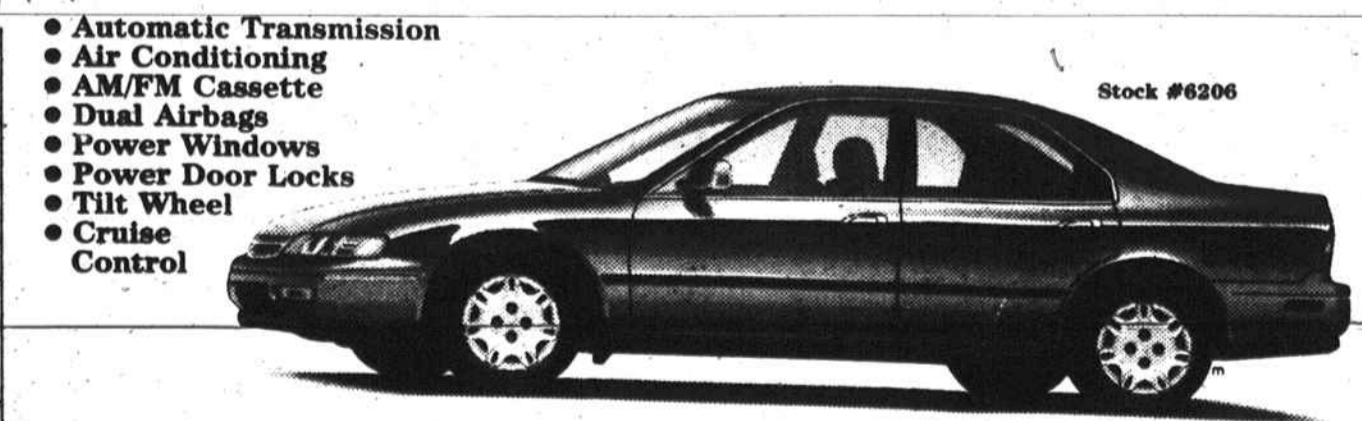
NO
MONEY
DOWN!

NEW 1995 5
ACCORD LX SEDAN



Stock #6178

- Auto Transmission
- AM/FM Cassette
- Power Windows
- Power Locks
- Dual Airbags
- Rear Defroster
- Much More!



Stock #6206

- Automatic Transmission
- Air Conditioning
- AM/FM Cassette
- Dual Airbags
- Power Windows
- Power Door Locks
- Tilt Wheel
- Cruise Control

LEASE WITH NO MONEY DOWN

\$229

PER MONTH

30 mo. closed end lease with option to purchase at lease end for \$9681. 12,000 miles per year allowance. 1st. mo. payment, security deposit, taxes and license due at delivery. On approved credit.

LEASE WITH NO MONEY DOWN

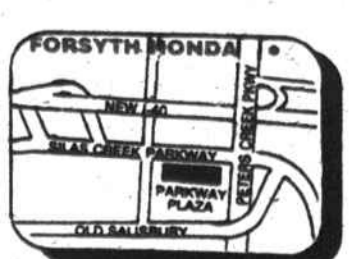
\$289

PER MONTH

30 mo. close end lease with option to purchase at lease end for \$12,649. 12,000 miles per year allowance. 1st. mo. payment, security deposit, taxes and license due at delivery. On approved credit.

FLOW MOTORS' FORSYTH HONDA

785-3380



2600 PETERS CREEK PARKWAY • MONDAY-FRIDAY 8:30AM-8:30PM, SATURDAY 9:00AM-6:00PM