

# REFLECTIONS FROM OUR FAMILY

As we turn our thoughts from the old year and focus on the new, we pause to thank "YOU" for your continued support, and patronage throughout the past 46 years. We pledge continued friendship with old friends, to cherish new friends, and for those friendships we hope to earn.



In Love & Memory  
Frances S. and Jerry C. Gilmore Jr.

A builder built a temple,  
He wrought with care & skill;  
Pillars & groins & arches  
Were fashioned to meet his will;  
And men said when they saw its beauty:  
"It shall never know decay,  
Great is thy skill of builders,  
Thy building shall endure for age."

A teacher built a temple  
She wrought with skill & care;  
Forming each pillar with patience,  
Laying each stone with prayer;  
None saw the unceasing effort,  
None knew of the marvelous plan;  
For the temple the teacher built  
Was unseen by the eyes of man.

*Wishing You & Yours A Blessed New Year  
From Your Loving Friends*

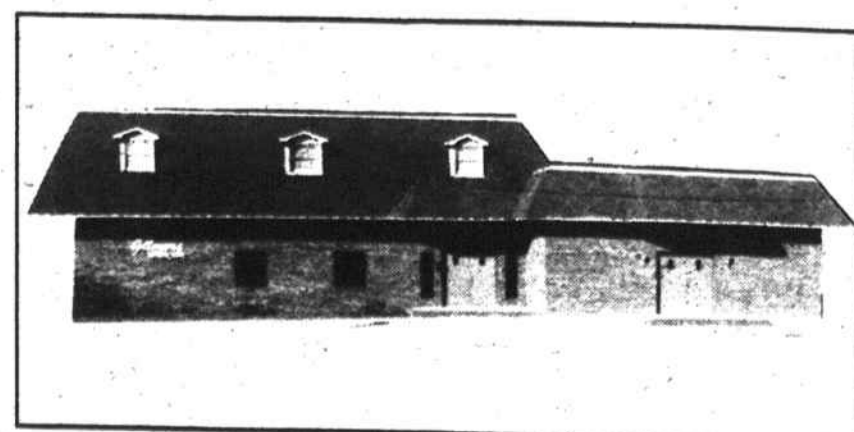
at

## Gilmore's

Funeral Homes



1609 N. LIBERTY STREET  
WINSTON-SALEM, NC  
PHONE 723-5508



513 COTTON GROVE ROAD  
LEXINGTON, NC  
PHONE 246-5247

Two Locations to Serve You