

PARKWAY FORD INTRODUCES THE NEW 1996 TAURUS

TAURUS GL

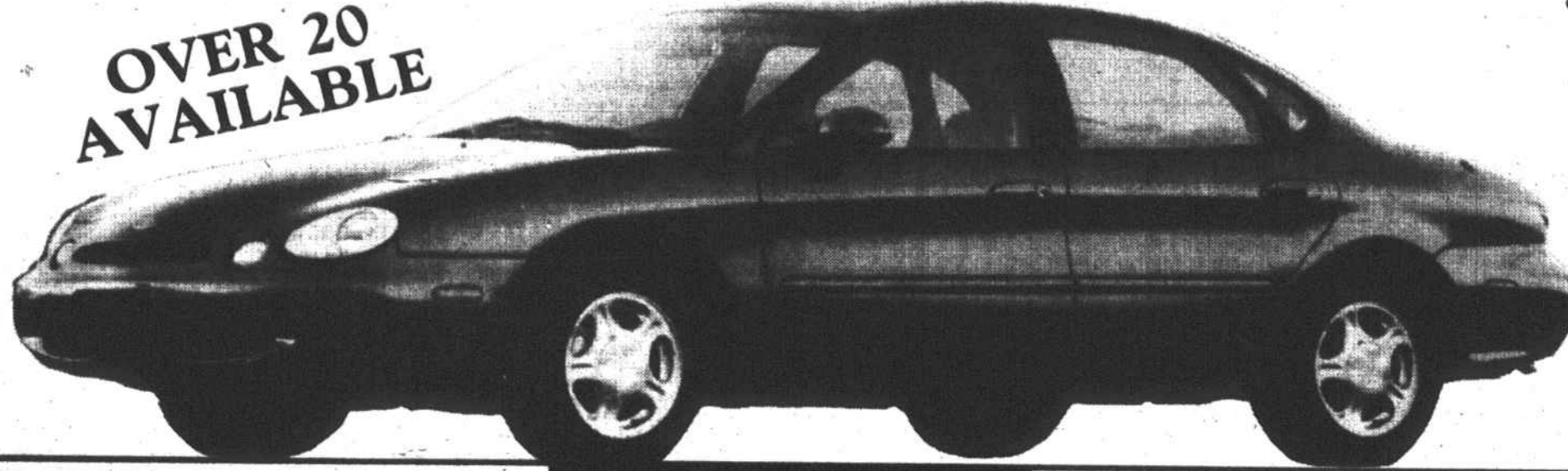
- 3.0 Liter Vulcan V-6
- 205-A Package
- Speed Control
- Front & Rear Floor Mats
- Power Windows
- Power Locks
- Micro Particulate Air Filtrations Systems
- AM/FM Cassette
- 6-Way Power Driver's Seat
- Cast Aluminum Wheels
- Automatic Overdrive

\$18,995

#3357TA

1996 FORD TAURUS

OVER 20 AVAILABLE



TAURUS LX

- 3.0 Liter 4 Valve Duratech V-6
- Automatic Overdrive
- 209-A Package • Speed Control
- AM/FM Cassette
- Power Windows • Power Locks
- Front & Rear Floor Mats
- Micro Particulate Air Filtration System
- 6-Way Power Driver's Seat
- Cast Aluminum Wheels
- Anti-Lock Braking System
- Keyless Entry System
- Perimeter Anti-Theft System

\$20,995

#3367TA

1995 MUSTANG MANIA CONTINUES!



- Automatic Overdrive • Air Conditioning • Speed Control
- Rear Defroster • Remote Keyless Entry • Power Locks
- Power Windows • 15" Spyder Alum. Wheels

LX CONVERTIBLE
243A #3175MT

LX COUPE
243A #3294MT

\$21,995
AFTER \$1000 REBATE

\$16,995
AFTER \$500 REBATE

YEAR-END DEMO CLEARANCE

- 1 - CONCOR SE
- 1 - BRONCO EDDIE BAUER
- 1 - EXPLORER EDDIE BAUER
- 1 - EXPLORER XLT
- 1 - EXPLORER LIMITED
- 1 - MUSTANG GT

SUPER SAVINGS!

1995 ESCORTS WAGONS - 4 DRS - 2 DRS ONE PRICE



\$300 REBATE
\$10,995
AFTER REBATE

1995 THUNDERBIRD LX BEST DEAL IN TOWN!!



\$16,700
AFTER REBATE

FINAL CLEARANCE ON ALL 1995 MODELS

1995 EXPLORER XLT 4x4



- Automatic • 4 Door • All Terrain Tires
- AM/FM Cassette W/premium Sound
- Air Conditioning • 4.0 Engine
- Luggage Rack

\$24,900

1995 BRONCO XLT



- 4x4 Touch Drive • Air Conditioning
- Rear Defroster • Privacy Glass • Power Windows/Locks • AM/FM Cassette • 5.0 EFI V-8, Trailer Towing Pkg. • Limited Slip Axle • All Terrain Tires • Two Tone Paint

\$23,995
AFTER REBATE

\$1.00 DOWN
\$16900
PER MONTH

1995 FORD ASPIRE



SALE PRICE - \$8220
8.5% APR, 60 mo. TOP - \$10,199.40. Plus tax, tag, NCI, dealer prep, on app. credit.

1995 WINDSTAR



1995 AEROSTAR



\$1000
REBATE ON ALL MODELS
YOUR CHOICE

1995 RANGER XLT \$300 REBATE



\$11,495
AFTER REBATE

PRE-OWNED VEHICLES

CLEARANCE ON ALL PROGRAM VEHICLES

CARS	
'95 FORD MUSTANG G.T.	\$20,995
'94 FORD MUSTANG LX CONV.	\$18,995
'94 FORD CROWN VICT LX 4 DR.	\$18,995
'94 MERCURY SABLE LS STA. WAG.	\$17,995
'92 PONTIAC SSE-I 4 DR.	\$16,995
'94 HONDA ACCORD EX 4 DR.	\$16,995
'94 FORD MUSTANG	\$15,995
'94 PONTIAC FIREBIRD	\$15,995
'95 NISSAN ALTIMA GXE	\$15,995
'94 FORD THIRSD LX	\$14,995
'94 FORD THIRSD LX	\$14,995
'93 CHEV. LUMINA EURO 4 DR.	\$12,995
'94 MERCURY COUGAR XR7	\$12,995
'94 HONDA CIVIC DX 4 DR.	\$12,995
'93 HONDA ACCORD 2 DR.	\$12,995
'92 FORD TAURUS GL STA. WAG.	\$11,995
'94 BUICK CENTURY 4 DR.	\$11,995
'93 FORD ESCORT LX STA WGN	\$9995
'92 OLDS CUTLASS SUPREME 4 DR.	\$9995
'93 FORD ESCORT LX STA. WAG.	\$9995
'89 HONDA PRELUDE	\$9995
'93 FORD ESCORT LX STA. WAG.	\$8995
'92 FORD MUSTANG LX H. BACK	\$8995
'90 NISSAN 240 SX	\$8995
'94 FORD TAURUS GL 4 DR.	\$6995
'89 FORD THIRSD	\$6995

TRUCKS	
'94 FORD E350 PARCEL DEL. VAN 14 FT. BOX	\$22,995
'94 FORD F-150 EXT CAB XLT	\$17,995
'94 FORD F-150 XLT S.BED	\$16,995
'94 FORD F-150 XLT	\$16,995
'94 FORD F-150 XLT SHORT BED	\$16,995
'93 CHEV. PICKUP SILVERADO L.BED	\$15,995
'93 FORD F-150 LIGHTING	\$15,995
'95 DODGE DAKOTA SPORT	\$14,995
'94 FORD RANGER XLT EXT. CAB	\$13,995
'92 FORD F-150 XLT LONG BED	\$12,995
'94 FORD RANGER XLT 4X4	\$11,995
'94 CHEV. S-10 PICKUP	\$10,995
'94 FORD RANGER XLT	\$10,995
'94 FORD RANGER XLT	\$10,995
'93 FORD RANGER XLT	\$9995
'93 FORD RANGER XLT	\$9995
'94 MITSUBISHI MIGHTY MAX	\$8995
'92 FORD RANGER XLT	\$8995
'92 MITSUBISHI MIGHTY MAX	\$7995

SPORTS UTIL/VANS	
'94 FORD EXPLORER XLT 4 DR.	\$24,995
'95 FORD EXPLORER XLT	\$24,995
'94 FORD BRONCO XLT 4X4	\$22,995
'94 FORD EXPLORER XLT 4 DR. 4X4	\$22,995
'94 FORD EXPLORER XLT 4 DR.	\$21,995
'94 FORD EXPLORER XLT 4 DR.	\$19,995
'95 FORD WINDSTAR GL	\$19,995
'94 FORD EXPLORER XLT 4X4	\$18,995
'95 CHEV. ASTRO C.L. VAN	\$18,995
'94 FORD EXPLORER XLT 4 DR.	\$18,995
'92 FORD EXPLORER SPORT 2 DR 4x4	\$17,995
'93 FORD EXPLORER XLT 4 DR.	\$17,995
'93 FORD EXPLORER XLT 4 DR.	\$17,995
'95 FORD E-150 CARGO VAN	\$16,995
'91 FORD EXPLORER 4 DR EDDIE BAUER	\$15,995
1998 FORD E-150 FLEETWOOD FASHION-CRAFT R.V.	\$13,995
'93 SUZUKI SIDEKICK JX 4 DR.	\$12,995
'91 PONTIAC TRANSPORT MINI VAN	\$11,995
'89 FORD AEROSTAR EDDIE BAUER	\$8995

5 - 1995 FORD CONTOUR GL 4 DR. 4 cyl., auto, A/C, PW, PL, stereo w/cass.	SALE PRICE \$14,770
	\$295 ⁰⁶ PER MONTH \$1000 down plus tax, tag, NCI 9.9% APR, 60 mo. Fin. chrg. \$3913.60 TOP \$17,703.60
2 - 1995 FORD TBIRD LX CPE V8, auto, A/C, PW, PL, p. seat, stereo.	SALE PRICE \$14,990
	\$297 ³⁰ PER MONTH \$1000 down plus tax, tag, NCI 9.9% APR, amt. fin. \$13,990, TOP \$17,838.00, Fin. chrg. \$3848.00, 60 months.
3 - 1994 FORD E350 CLUB WAG. 15 PASSENGER V8, auto, dual A/C, PW, PL, AM/FM w/cass. Sk. U2457 Stk. #U2456	\$18,990

2 - 1995 FORD AEROSTAR EXT. VAN'S V6, auto, A/C, PW, PL, stereo.	SALE PRICE \$15,990
	\$331 ⁷⁶ PER MONTH Amt. fin. \$14,490. Fin. charge \$3415.04. Total payments \$17,915.04. 34 mos., 9.5% APR. 1500 down plus tax, tag, NCI.
10 - 1994 TOPAZ GS OR TEMPO GL 4 door, 4 cyl., auto, A/C, PL, AM/FM.	SALE PRICE \$9990
	\$191 ⁵³ PER MONTH \$1000 down plus tax, tag, NCI 9.9% APR 60 mo. Amt. fin. \$8990. TOP \$11,491.80, fin. charge \$2501.80.
3 - 1995 FORD F-150 XL LONG BED V8, auto, A/C, AM/FM, argent whls.	SALE PRICE \$14,990
	\$297 ³⁰ PER MONTH \$1000 down plus tax, tag, NCI 9.9% APR 60 mo. Amt. fin. \$13,990. TOP \$17,838.00, fin. charge \$3848.00.

CREDIT PROBLEMS? LOAN APPROVED!
Parkway Ford recently made arrangements with a loan insurance company to obtain special financing for people with some of the following situations: (Bankruptcy, Foreclosure, Repossession, Slow Credit, etc.)

Ask for **EARL CLOFFON** or **PAUL RAMSEY**

You Must Bring:
• Driver's License
• Social Security Card
• Proof of Income

Prices Do Not Include Tax, Tag & Title Fee. Dealer Bonus Rebates If Any. On Approved Credit.

SHOP AT HOME
1-800-467-2469

Triad's Only Award Winning Dealership 14 Years In A Row.

PARKWAY FORD

2104 PETERS CREEK PARKWAY, WILSON-SALEM N.C. NO. 703 724-5921

OVER 30 YEARS OF AUTOMOTIVE EXCELLENCE

DISTINGUISHED ACHIEVEMENT FOR QUALITY

1981, 1982, 1983, 1984, 1985, 1986, 1987, 1988, 1989, 1990, 1991, 1992, 1993 AND 1994

AWARD DEALER