

GMC TRUCK

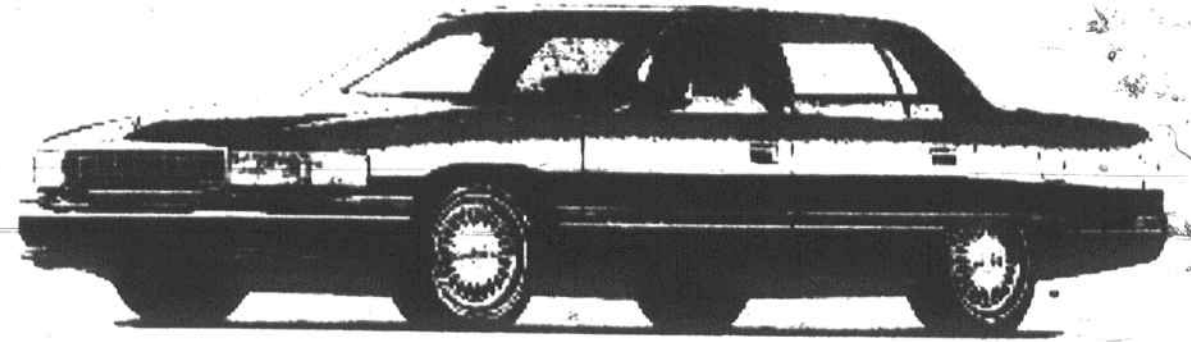
CLASSIC

CADILLAC • GMC TRUCK



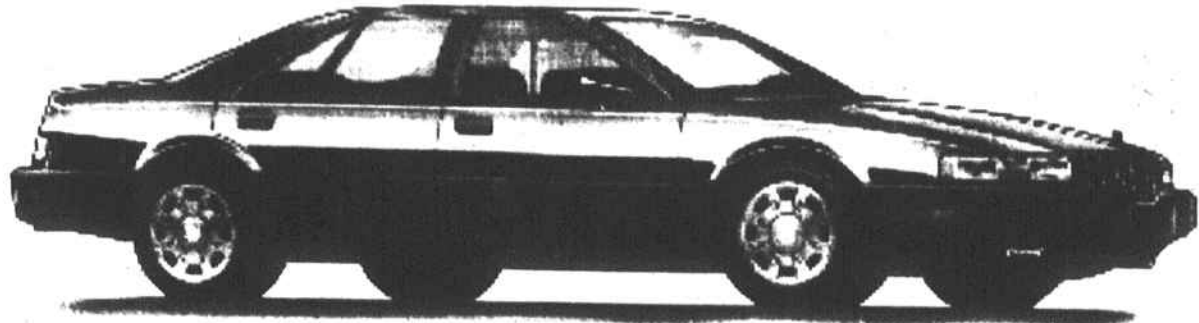
1996 Cadillac Sedan Deville

\$395 PER MONTH

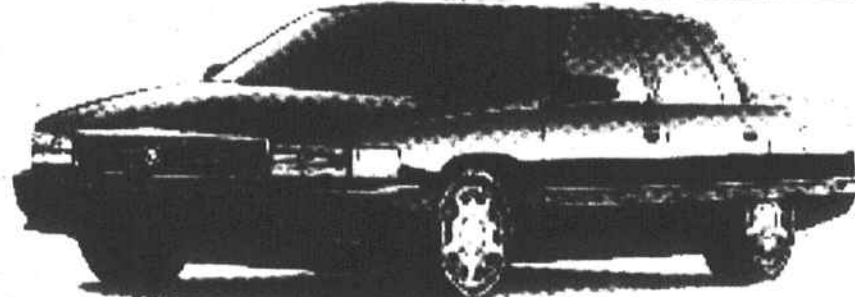


96 CADILLAC SEDAN DEVILLE - Closed end 24 mo. lease. \$37,950 MSRP, lease end value \$24,667. 12,000 miles per yr. Cap cost reduction \$4,275.00. 1st payment, security deposit, taxes, tag, title & doc. fee due at delivery.

New Seville SLS



New Cadillac Sedan Deville Concour

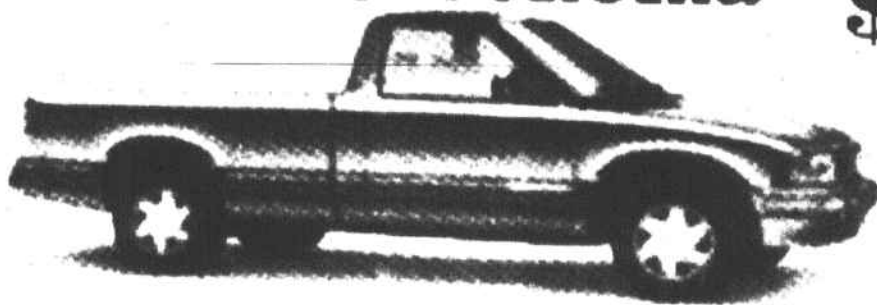


UP TO... **\$7700 DISCOUNT**

UP TO... **\$8000 DISCOUNT**

GMC Sonoma

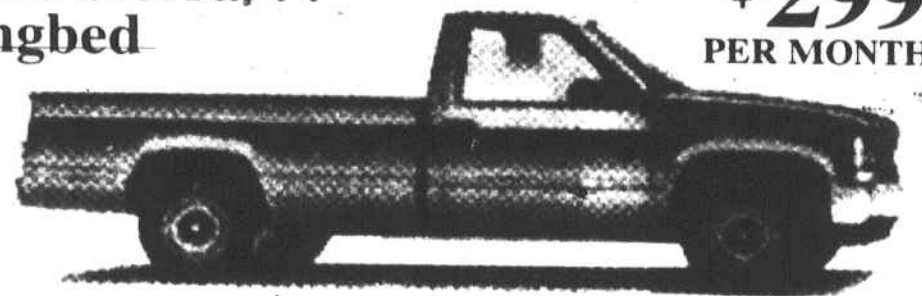
\$199 PER MONTH



Auto, AM/FM cass., A/C.

GMC Sierra, . . . Longbed

\$299 PER MONTH



Auto, A/C, tilt, cruise, AM/FM stereo.

1996 JIMMY 4X4 SLE

\$29999 PER MONTH

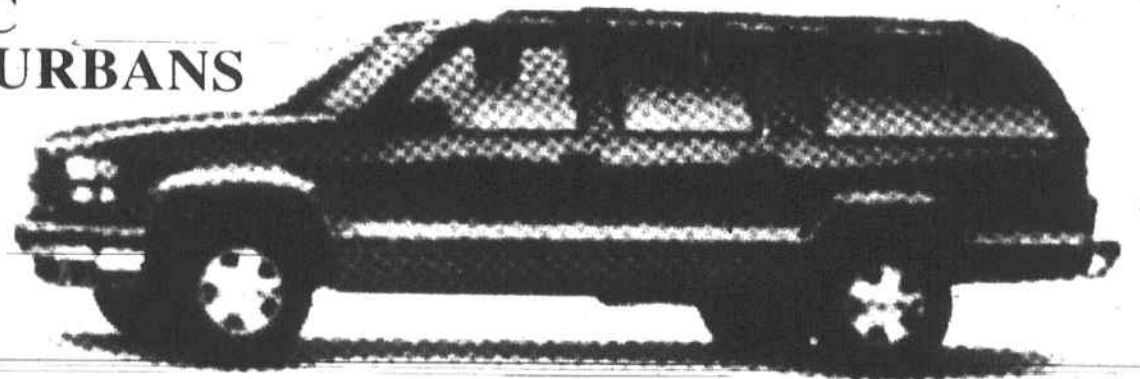
#T6009



*Based on 30 mos. Lease. Cap Cost Reduction is \$3,000, plus 1st Payment, Refundable Security Deposit, plus Tax, Tags, & Fees

ANY INCENTIVES TO DEALER PRICES DO NOT INCLUDE TAX, TAGS.

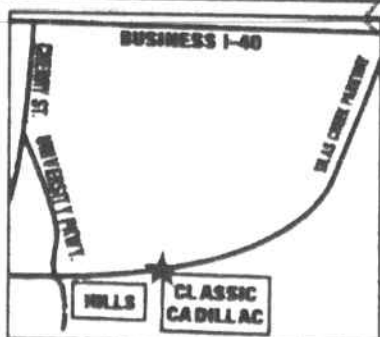
GMC SUBURBANS



IN STOCK NOW!

QUALITY PRE-OWNED CARS & TRUCKS

'82 Mercedes Benz 300SD #C6021B WAS \$7,488 \$4,988	'92 Chrysler Lebaron Conv #C6018AA92 \$12,988	'92 Cadillac Deville #P603A 29K local trade, WAS \$19,988 \$17,988	'93 Cadillac Seville #P655 Polo green WAS \$26,988 \$24,988
'90 Mazda B2200 Pickup Auto, camper shell. WAS \$6,995 \$4,988	'94 GMC Sierra SLE #P656 PW PL. cruise WAS \$18,488 \$15,988	'95 GMC Sierra SLE #P616 Demo 5K WAS \$21,247 \$18,988	'95 Cadillac Devilles 4 to choose from. \$24,988
'88 Cadillac Platinum Brougham #C5122A WAS \$7,777 \$5,995	'93 Buick Roadmater Limited #P643A Local trade, WAS \$18,477 \$16,988	'95 Honda Accord EX #T6025A Leather 15K local trade WAS \$20,988 \$18,988	'94 Deville Coucour 20K astro roof, chrome wheels WAS \$29,995 \$27,988
'93 Ford Aerostar Van #P638A 1 owner WAS \$10,477 \$8,888	'92 Cadillac Deville #P633A White local, trade WAS \$19,488 \$16,988	'95 GMC Sierra Club Coupe Demo SLE #P624 WAS \$21,277 \$19,588	'94 Seville STS #663 White diamond, beautiful WAS \$35,488 \$32,988
'93 Chevy Lumina Van #P622A Local trade, WAS \$14,777 \$12,988	'92 Cadillac Deville #C6016A Local trade, red WAS \$19,888 \$16,988	'92 Cadillac Fleetwood FWD #C5088A 60 Special, local trade WAS \$23,277 \$19,988	'94 Seville STS #663 White diamond, beautiful WAS \$35,488 \$32,988
'89 Cadillac Deville #P637A Local trade, WAS \$15,988 \$12,988	'93 Chevy 2500 #P610B 6.5 turbo diesel WAS \$18,988 \$16,988	'94 Deville #662 Silver chrome wheels 24K WAS \$25,388 \$23,988	'95 Deville Concours #660 White 14K WAS \$36,988 \$34,988



CLASSIC
CADILLAC • GMC TRUCK
7726 NORTH POINT BLVD.
WINSTON-SALEM, NC

(910) 759-2239
M-F 8:30-7
Sat. 9-4