

FLOW MOTORS' FORSYTH HONDA

Pardon the inconvenience!

To Better Serve The Triad We're Upgrading Our Facilities!

FORSYTH HONDA is still at the same location with the same great people and the same great service. While our showroom is temporarily closed, you can still get that same great deal on a beautiful new HONDA at FORSYTH HONDA. Come in today. Discover why FORSYTH HONDA is the Triad's No. 1 Volume Honda Dealer.

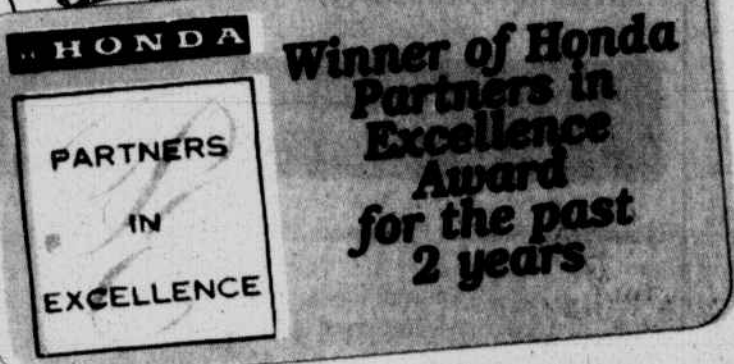
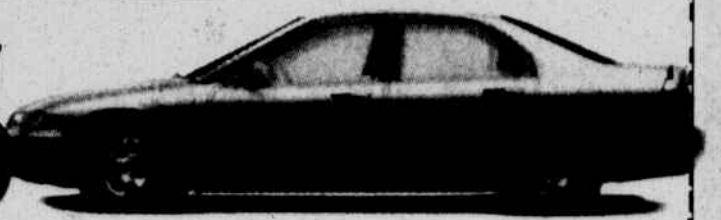


1997 Model Year Closeout!

'97 HONDA ACCORD LX

Starting at

\$16,995



Winner of Honda Partners in Excellence Award for the past 2 years

1998 HONDA CIVICS
Now In Stock!
Starting at
\$12,495

come see the **NEW ACCORD**
Redesigned To The Head Of Its Class



ALL NEW VTEC ENGINE

Over 40
Now In
Stock and
Ready For
Immediate
Delivery!

The 1998 Accord Sedan is, quite simply, an Accord like no other. Honda engineers set out to design a car with more room and power, a higher level of luxury and more standard equipment than ever before. All while maintaining the kind of value people have come to expect from Honda. Inspect the new Accord and you will see that they have succeeded. Nearly every aspect of this car has been scrutinized and refined. From the suspension and interior details right on up to its sophisticated new styling. Under the hood you'll find an engine that is more powerful than ever before. Passenger and cargo capacity have been increased. Luxurious amenities have been added throughout. The result is a refined sedan that is not only a pleasure to look at, but a true thrill to drive. Welcome to what will surely become a legendary car: the 1998 Honda Accord.



The All New 1997 Honda CR-V is Here!

In Stock and Ready for
Immediate Delivery!

Real-Time™ 4-Wheel Drive (4WD), 4-Wheel double wishbone suspension, 126-horsepower; 16 value dual overhead camshaft engine, dual airbags, 4-speed automatic transmission with grade logic control system, air conditioning, power windows, mirrors and door locks, cruise control, high power stereo and a removable, folding picnic table.

Option Package adds an anti-lock braking system (ABS) and exclusive 15" alloy wheels



Timing is everything, isn't it?

Great Selection Pre-Owned Vehicles!

PRE-OWNED HONDAS

- 1995 HONDA CIVIC DX CPE. #P5002 5 spd. AMFM w/CD. AC. 18 wheel. PS. PB. \$11,495
- 1995 HONDA CIVIC DX 4 DOOR #P5130 5 spd. AMFM cassette. AC. 18 wheel. PS. PB. \$11,495
- 1995 HONDA DE SOL S #4244 5 spd. AMFM cassette. AC. 18 wheel. PS. PB. 27K miles. one owner. local trade. \$11,995
- 1996 HONDA CIVIC DX CPE. #P5113 5 spd. AMFM. AC. 18 wheel. PS. PB. 13K miles. White. \$12,995
- 1995 HONDA CIVIC EX CPE #4664 5 spd. AMFM cassette. AC. CC. 18 wheel. PS. PB. PW. PL. one owner. local trade. sunroof. \$13,995
- 1995 HONDA ACCORD LX 4 DOOR #4570A Auto trans. AMFM. AC. CC. PS. PB. PW. one owner. local trade. \$13,995
- 1997 HONDA CIVIC DX 4 DOOR #P5144 Auto. AMFM. AC. CC. 18 wheel. PS. PB. 17K miles. \$14,788
- 1995 HONDA ACCORD LX 4 DOOR #P5137 5 spd. AMFM CD cassette. AC. CC. 18 wheel. PS. PB. PW. PL. 24K miles. \$14,995
- 1995 HONDA ACCORD LX WAGON #4460A Auto trans. AMFM cassette. AC. CC. 18 wheel. PS. PB. PW. PL. 30K miles. one owner. local trade. \$15,995
- 1997 HONDA ACCORD VAL PACK #D4200 Auto. AMFM. AC. CC. 18 wheel. PS. PB. 16K miles. \$15,995
- 1995 HONDA ACCORD LX 4 DOOR VS #P5140 Auto trans. AMFM CD cassette. AC. CC. 18 wheel. PS. PB. PW. PL. V-6 eng. 21K miles. sunroof. ABS. \$16,995
- 1997 HONDA ACCORD LX 4 DOOR #P5123 Auto. AMFM cassette. AC. CC. 18 wheel. PS. PB. PW. PL. 16K miles. \$17,495
- 1996 HONDA ACCORD EX 4 DOOR #P5117 Auto. AMFM cassette. AC. CC. 18 wheel. PS. PB. PW. PL. alloy wheels. 21K miles. sunroof. ABS. \$18,995
- 1996 HONDA ACCORD EX WAGON #P5004 Auto. AMFM. AC. CC. 18 wheel. PS. PB. PW. PL. alloy wheels. 25K miles. one owner. local trade. sunroof. ABS. \$18,995
- 1995 HONDA ACCORD EX VS #P5136 Auto trans. AMFM CD cassette. AC. CC. 18 wheel. PS. PB. PW. PL. V-6 eng. alloy wheels. 16K miles. sunroof. ABS. \$19,495
- 1997 HONDA ACCORD EXL CPE #P5119 5 spd. AMFM cassette & CD. AC. CC. 18 wheel. PS. PB. PW. PL. alloy wheels. 16K miles. leather. sunroof. spoiler. power seat. \$19,995
- 1997 HONDA ACCORD SE 4 DOOR #P5116 Auto. AMFM w/CD. AC. CC. 18 wheel. PS. PB. PW. PL. alloy wheels. 16K miles. sunroof. leather entry. leather seat. \$20,995
- 1997 HONDA ACCORD EX 4 DR. #4607A Auto. AMFM. CD. AC. CC. 18 wheel. PS. PB. PW. PL. alloy wheels. sunroof. white. local trade. \$20,995

OTHER PRE-OWNED AUTOS

- 1992 MAZDA PROTEGE DX 4 DOOR #P5142 5 spd. AMFM cassette. AC. 18 wheel. PS. PB. 50K miles. \$6,995
- 1995 MITSUBISHI MIRAGE LS #476AA 5 spd. AMFM cassette. AC. 18 wheel. PS. PB. PW. PL. 27K miles. one owner. local trade. \$9,495
- 1994 NISSAN ALTIMA GXE #P5124 AMFM. AC. AC. CC. PS. PB. PW. PL. \$9,995
- 1994 PONTIAC GRAND AM GT CPE #4247A Auto. AMFM cassette. AC. CC. 18 wheel. PS. PB. PW. PL. V-6. alloy wheels. 30K miles. 1 Owner. Local Trade. \$9,995
- 1997 FORD ESCORT 4 DOOR LX #3202A AMFM. 18 wheel. PS. PB. 20K. local trade. \$10,995
- 1995 NISSAN SENTRA GXE 4 DOOR #4618B Auto trans. AMFM cassette. AC. CC. 18 wheel. PS. PB. PW. PL. 42K miles. one owner. local trade. \$10,995
- 1996 CHEVROLET CAVALIER #P5120A Auto trans. AMFM cassette. AC. CC. 18 wheel. PS. PB. 17K miles. \$11,495
- 1996 CHEVROLET CAVALIER Z24 #4664 5 spd. Cassette. AC. CC. 18 wheel. PS. PB. PW. PL. alloy wheels. 19K miles. 1 Owner. local trade. \$11,995
- 1996 NISSAN SENTRA GXE 4 DOOR #4700A Auto. AMFM. AC. CC. 18 wheel. PS. PB. PW. PL. 10K miles. one owner. local trade. \$11,995
- 1996 CHEVROLET BERETTA Z26 #P5120B Auto trans. AMFM cassette. AC. CC. 18 wheel. PS. PB. PW. PL. V-6 eng. alloy wheels. 30K miles. \$11,995
- 1996 HYUNDAI SONATA GL #P5114 Auto trans. AMFM cassette. AC. CC. 18 wheel. PS. PB. PW. PL. V-6 eng. 21K miles. sunroof. \$12,495
- 1996 CHEVROLET LUMINA #4702A Auto trans. AMFM cassette. AC. CC. 18 wheel. PS. PB. PW. PL. V-6. 20K miles. one owner. \$12,995
- 1996 CHEVROLET CAMARO #P5107A AMFM cassette. AC. CC. 18 wheel. PS. PB. PW. PL. alloy wheels. 28K miles. 1 Owner. Local Trade. 1-Top. \$13,995
- 1995 TOYOTA CAMRY LE #P5120A Auto trans. AMFM cassette. AC. CC. 18 wheel. PS. PB. PW. PL. 30K miles. one owner. local trade. \$15,995
- 1997 DODGE INTREPID SPORT #4622A Auto trans. AMFM cassette. AC. CC. 18 wheel. PS. PB. PW. PL. V-6 eng. alloy wheels. 16K miles. one owner. \$16,995
- 1996 CHRYSLER SEBRING JX CONV. #4491A Auto trans. AMFM cassette. AC. CC. 18 wheel. PS. PB. PW. PL. V-6 eng. 37K miles. local trade. \$17,995
- 1995 NISSAN MAXIMA GLE #1026A Auto trans. AMFM CD cassette. AC. CC. 18 wheel. PS. PB. PW. PL. V-6 eng. alloy wheels. 32K miles. one owner. local trade. leather. Bose. sunroof. \$18,995
- 1996 ACURA INTEGRA SE 4 DOOR #P5126 Auto trans. AMFM CD cassette. AC. CC. 18 wheel. PS. PB. PW. PL. alloy wheels. 28K miles. leather. sunroof. ABS. \$18,995

PRE-OWNED UTILITY VEHICLES

- 1994 MITSUBISHI MIGHTY MAX TRUCK #4737A 5 spd. AMFM. one owner. PS. local trade. \$6,995
- 1994 SUZUKI SIDEKICK JS CONV. #P5144A 5 spd. AMFM cassette. 18 wheel. PS. PB. alloy wheels. one owner. local trade. \$7,995
- 1996 FORD RANGER XLT TRUCK #P5078 5 spd. AMFM. AC. CC. 18 wheel. PS. PB. alloy wheels. local trade. bed cover. \$9,995
- 1992 JEEP WRANGLER #4664 5 spd. AMFM cassette. PS. PB. 6 cyl. local trade. Black. \$9,995
- 1994 PLYMOUTH GRAND VOYAGER SE #3464B 5 spd. AMFM cassette. PS. PB. 6 cyl. PS. PB. PW. PL. V-6. alloy wheels. local trade. \$10,995
- 1994 NISSAN TRUCK XE 4X4 #4633A Auto. AMFM cassette. AC. CC. 18 wheel. PS. PB. alloy wheels. 37K miles. local trade. \$11,995
- 1994 FORD AEROSTAR EDDIE BAUER #4488B Auto. AMFM cassette. Dual AC. CC. 18 wheel. PS. PB. PW. PL. 6 cyl. alloy wheels. 37K miles. local trade. leather. Very Nice. \$12,995
- 1995 SUZUKI SIDEKICK #P5111 5 spd. AMFM cassette. AC. CC. 18 wheel. PS. PB. PW. PL. 16K miles. \$14,495
- 1995 CHEVROLET ASTRO VAN CT AWD #4633A Auto. AMFM cassette. AC. CC. 18 wheel. PS. PB. PW. PL. V-6. alloy wheels. 1 Owner. local trade. \$15,995
- 1996 FORD F150 XLT 4X4 #4788A Auto trans. AMFM cassette. AC. CC. 18 wheel. PS. PB. PW. PL. V-6 eng. alloy wheels. 20K miles. one owner. local trade. short bed. off road pkg. \$17,995
- 1996 DODGE DAKOTA EXT. CAB. 4X4 #4508B AMFM cassette. AC. CC. 18 wheel. PS. PB. PW. PL. V-6 eng. alloy wheels. 30K miles. one owner. local trade. \$17,995
- 1996 JEEP CHEROKEE COUNTRY 4 DOOR 4X4 #P5110 Auto trans. AMFM cassette. AC. CC. 18 wheel. PS. PB. PW. PL. V-6 eng. alloy wheels. one owner. \$18,995
- 1997 FORD F150 XTRA CAB #P5135A Auto trans. AMFM cassette. AC. CC. 18 wheel. PS. PB. PW. PL. V-6 eng. alloy wheels. 12K miles. one owner. local trade. \$20,995
- 1996 FORD EXPLORER XLT 4 DOOR 4x4 #4728A Auto. AMFM. AC. AC. CC. 18 wheel. PS. PB. PW. PL. alloy wheels. 15K miles. one owner. \$21,995
- 1997 HONDA ODYSSEY LX #D3157 Auto trans. AMFM cassette. AC. CC. 18 wheel. PS. PB. PW. PL. 16K miles. demo. \$21,995
- 1997 DODGE RAM 1500 XTRA CAB 4X4 #P5115A Auto trans. AMFM cassette. AC. CC. 18 wheel. PS. PB. PW. PL. V-6 eng. alloy wheels. 20K miles. one owner. SLT Laramie. \$23,995

120 POINT FLOW CERTIFICATION

The exterior, interior, mechanical and safety features are thoroughly inspected and must pass the highest quality standards before the vehicle is displayed for sale.



COMPREHENSIVE WARRANTY *Guaranteed!*

WE TAKE ALL THE RISK OUT OF BUYING PRE-OWNED VEHICLE!

All pre-owned vehicles sold for more than \$7,000 carry a 12 month/12,000 mile warranty at no additional charge. Pre-owned vehicles sold for less than \$7,000 carry a 60 day/3,000 mile warranty at no additional charge.

30 DAY EXCHANGE PRIVILEGE



If for any reason in the first 30 days or 1,500 miles of ownership you are not satisfied with your vehicle, you can trade it for another similarly priced vehicle at no charge or upgrade & pay the difference!

EXTENDED PROTECTION



We offer extended service contracts that will provide more comprehensive coverage and lengthen the term of your existing coverage.

FLOW MOTORS' FORSYTH HONDA

785-3380

2600 PETERS CREEK PARKWAY • MONDAY-FRIDAY 9:00 AM-9:00 PM • SATURDAY 9:00 AM-6:00 PM

• Only 10 Minutes from Hanes Mall

