

Children get guidance, education and recreation

By BOMANI MAWULI
THE CHRONICLE Reporter



Two youngsters enjoy themselves at a Valentine's Day gathering at the 14th Street Community Center.

On Valentine's Day, the 14th Street Community Center threw a party. But it wasn't an ordinary Valentine's Day jam.

This gathering, which was hosted by the community group—Brothers and Sisters Rising, was a joyous celebration for the children of the community and their supporters.

Three supporters of Brothers and Sisters Rising and the children who are assisted by this grassroots group were honored at the gathering.

The Rev. Samuel Hodges of First Stephen's Church, Jack Cavanagh, mayor of Winston-Salem, and Walter Marshall, Forsyth County commissioner, all were awarded wooden plaques by Brothers and Sisters Rising and the 14th Street Community Center as a symbol of appreciation for all of their help and assistance.

The brief and modest awards ceremonial portion of the Valentine's Day party was held in the small gymnasium of the 14th Street Community Center. The audience was comprised mainly of about fifty children who ranged in age from about five to 13 years old.

Cavanagh, after giving a short speech about his life, ancestry and religious faith, informed the children and the few adults in attendance that he was willing to help them in whatever way that he could.

"You don't have to come from royalty or a rich background to become an alderman in the city of Winston-Salem...or a North Carolina senator...[or] mayor..." said Cavanagh.

"You have 4 years to come to

al assault are very unusual for our campus. Up to this point, during this academic year, we've had no reported sexual assaults on our campus," said Welborne.

"For your information," Welborne added, "two of these basically were robberies, and two were a combination of robbery and sexual assault."

Immediately after the first criminal attack on Feb. 4, the campus police claims to have taken action.

"Upon us being notified of the first assault, we immediately began surveillance of the area where this occurred. We increased our foot patrols and we also sent out an alert to the university community," stated Williams.

"Upon the second attack," continued Williams, "we started an immediate intensive investigation in cooperation with the Greensboro Police Department...and we also checked with the surrounding universities to see if they had any similar attacks...We also have been working in cooperation with the State

Bureau of Investigation to see if we can round-up this suspect as quickly as possible."

Authorities believe that the same perpetrator is responsible for all four of these crimes.

The suspect is reported to be a 5'10" to 6'1" Black male in his early twenties with a light-brown complexion. He weighs approximately 180 lbs., has hazel eyes and sports a Hitler-style mustache. Also, he is described as wearing a blue-hooded rain jacket.

The suspect is potentially dangerous. He has reportedly used a handgun in two of the attacks and a knife in the others, said Williams. But "to this point, none of the victims have been physically harmed."

In addition to increased safety measures such as improved campus lighting and police foot patrols, the university has upped its reward offer from \$500 to \$1,000 for any information regarding these robberies and sexual assaults. Please call 334-7155 or 334-7675 to share any information which might solve these crimes.

Go Shopping!

Real Estate Facts

Gwen Hill, CRS, GRI



With interest rates hovering in the 7 percent to 8 percent range, there has never been a more favorable time to purchase a home. Discount points, which at times have fluctuated dramatically, also have settled in at very attractive levels.

When buying a home, what can you do to insure receiving the most favorable mortgage terms? Plan ahead—and "shop 'til you drop." Review the rates and discount points being offered by local lenders, then narrow your search to the most attractive two or three.

Granted, there will be no extreme differences in rates, yet

consider the impact of saving even a quarter of one percent. Interest on a \$100,000 mortgage over 30 years at 7.25 percent amounts to \$145,580.04. At 7 percent, interest is \$139,510.98, a savings of \$6,069.06.

An even greater reward can be

enjoyed by analyzing discount points. On a \$100,000 mortgage with one discount point, the fee would be \$1,000. A lender offering discount points of one-half percent would yield net savings of \$500—hardly enough to arouse excitement—or is it? By investing

that \$500 in an aggressive mutual fund earning 15 percent for the 30-year life of your mortgage, it could grow to \$43,770.50.

With mortgages, what may appear to be inconsequential savings can amount to substantial rewards. Shop for those savings before you buy for the best home purchase ever.

Understanding real estate dilemmas and their solutions is our business, and we'll happily share our knowledge with you. Why not give us a call at 774-1601, or drop by our office at 250 Executive Park Blvd. Suite 107 (Mayfield & Hill Properties, Inc.)

A & T

from page A1

City appoints Lucas to M/WBE post

Assistant City Manager J. Allen Joines announced the appointment of Denise Mitchell Lucas to the position of Minority and Women's Business Enterprise program coordinator.

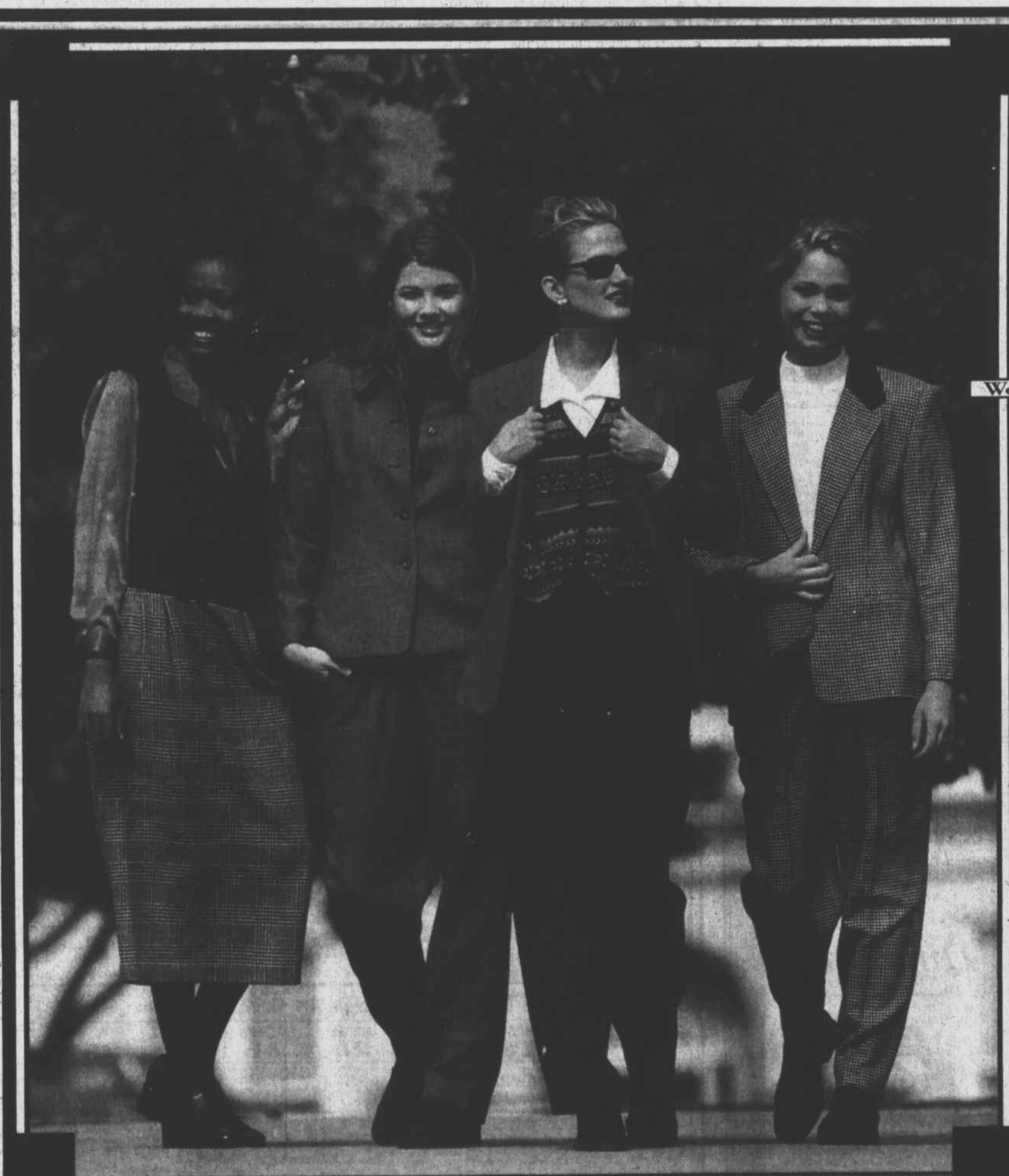
Lucas reports to Joines and is responsible for carrying out the city's M/WBE and Section 3 contractor's business program. Section 3 is a construction training program, and the monitoring of all city projects under the umbrella of Section 3 federal regulations. Lucas also will be working closely with the Business Development Department in obtaining assistance for disadvantaged businesses.

Lucas began working with the city in 1993 as a youth counselor in the Workforce Development Department and was promoted to eligibility specialist and to job training specialist. In 1995, she was promoted to Section 3 coordina-



Denise Lucas

tor/rehabilitation loan officer in the Housing and Neighborhood Services Department.



JOAN LESLIE

Save **33%**

■ MISSY ■ PETITES ■ WOMEN

Wool Blend Coordinates

Originally \$30-\$70, Now 20.10-46.90

Versatile career pieces you can wear now, in many solid colors and patterns. Missy 8-18, s-m-l-xl. Petites' 4-16, p-s-m-l. Women's, 16-24W, 1-3X, orig. \$32-\$72, now 21.44-48.24.

- JACKETS
- SKIRTS
- PANTS
- BLOUSES
- KNIT TOPS
- AND MORE

On seasonal clearance merchandise, selection varies by store. Extra discount not applicable to prior sales. Original prices are those of which merchandise was first marked in our store. Intermediate markdowns may have been taken.

Dillard's