

# Community garden yields plenty in first year

Plans for expansion underway

SPECIAL TO THE CHRONICLE

In 12 months, the "Reap More Than You Sow" (RMTYS) project in Rural Hall has gone from a concept to Forsyth County's second-largest producing community garden, yielding 7,500 pounds in crops for area food banks and volunteers in its first year.

What's remarkable, said project founder Mark Godwin, is the speed in which the idea blossomed, as community backers generously bought into a plan with infrastructure, a focus on young people and a concept known as ecotourism.

"We haven't had to spend one cent of our own money," Godwin said. "The community response has been more



Volunteers work in the garden.

than what we could have ever expected. After I approached (CEO) Scott Bauer at Southern Community Bank and Trust, they agreed to not only help us financially, but donate land for our first garden. After that, the project just took off."

RMTYS, a nonprofit organization, is celebrating its first anniversary this month with a fall planting at the four original gardens on land donated for use by Southern Community Bank and Trust, Pfafftown

Christian Church, Nazareth Lutheran Church in Rural Hall and Dr. Tom Wolfe and Sandy Steele.

The project has received multi-year financial commitments from Southern Community Bank and Trust, Flow Honda Winston-Salem and Technology Crops International. Funding and materials from Home Depot, Vulcan Materials, D.A.C. Industries, and Shouse Nursery have also been instrumental in the garden's early success. Just as critical

has been services provided at no charge from the law firm Kilpatrick Stockton, LLP and Zero Gravity Design.

More than 100 volunteers ages six to 77 worked the gardens during the summer, tilling, planting and ultimately harvesting more than 30 different crops, from corn to tomatoes to bell peppers to broccoli. They also grew flowers, from petunias to marigolds and 10 different herbs, such as cilantro, basil and oregano.

The organization was co-founded by Godwin and Chairman Andrew Hebard, both qualified horticulturalists and business owners who specialize in crops.

Plans are already underway to increase the number of gardens to 20 by 2011 and early 2012, extending their reach in some instances into nearby Davie, Yadkin, Surry and Guilford counties.

For more information, go to [www.reapmore.org](http://www.reapmore.org), or email [info@reapmore.org](mailto:info@reapmore.org).

**Macedonia Holiness Church Of God Of The Apostolic Faith, Inc.**

**Sunday Services**  
 Sunday School ..... 9:45 a.m.  
 Morning Worship ..... 11:00 a.m.  
 M.Y.P.U ..... 6:30 p.m.

**Wednesday Services**  
 Prayer & Bible Study ..... 7:30 p.m.  
 4111 Whitfield Drive  
 Phone: 336-767-3700  
 Fax: 336-767-7006

Bishop R.L. Wise, Sr.  
 D.D.; S.T.D. - Pastor

**St. Peter's Church & World Outreach Center**  
 3683 Old Lexington Rd. \* Winston-Salem, NC 27107 \* Telephone: (336) 656-0200

**Come Worship With Us!**

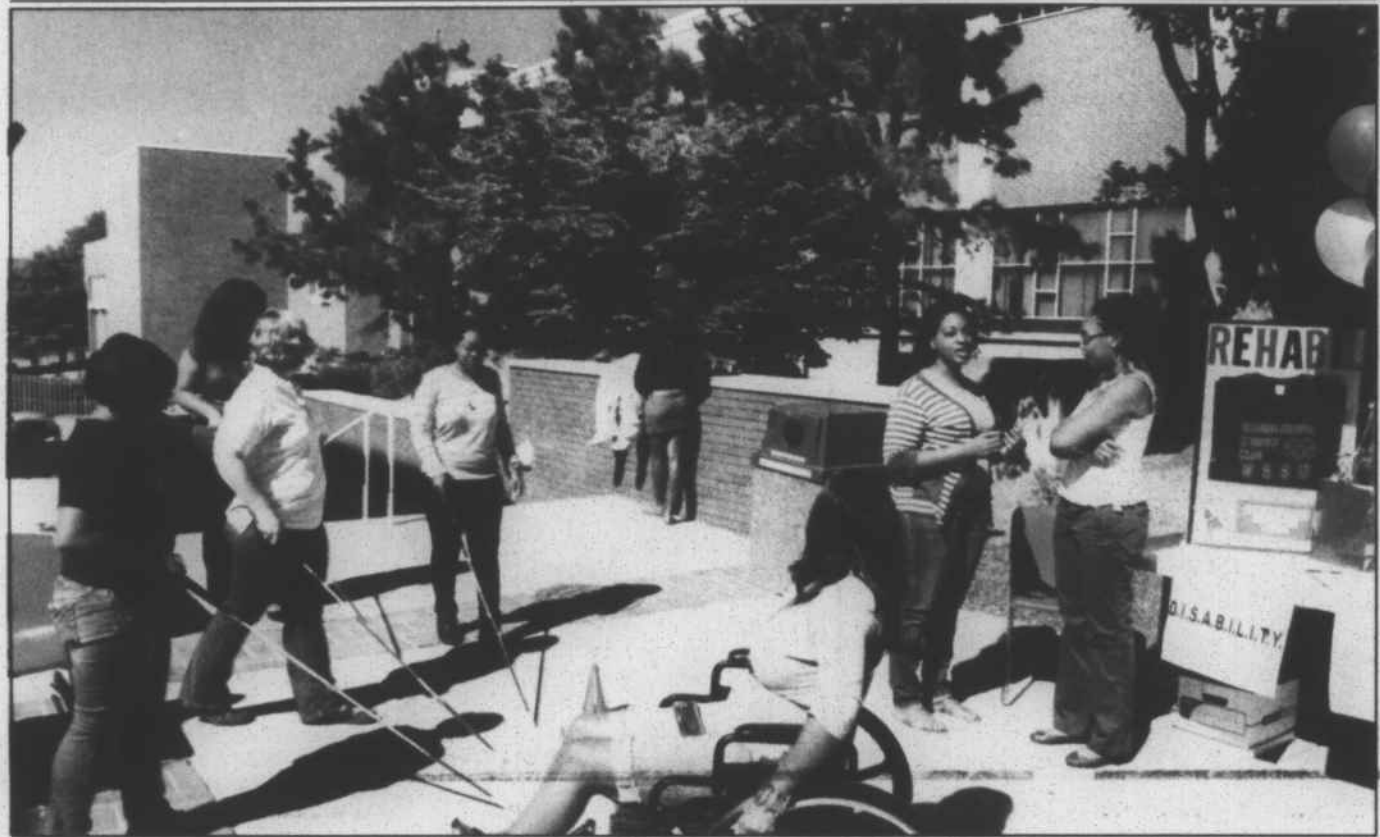
**Sunday Express:**  
 8:00 a.m.

**Sunday Worship:**  
 10:00 a.m.

**Wednesday Bible Study:**  
 10:30 a.m. and 7:00 p.m.

Bishop James C. & Mrs. Joyce Hash, Sr., Pastors

For information about additional services, visit our website at [www.spwoc.com](http://www.spwoc.com)



The WSSU Rehabilitation Studies Club prepares for its Disability Awareness Month event.

## Disabilities

from page B1

through a maze of chairs using a white cane to feel their way. Even a challenge as seemingly simple as pouring water from one cup into another was difficult for the blindfolded students.

Junior Margaret Herder said she thought she did okay on the pouring challenge. She did find the blind obstacle course "very, very challenging. She relied on verbal directions from student onlookers to help her navigate. Herder, an English major minoring in Deaf Studies, said she felt the awareness event was needed.

"Just for a moment, we walk in their shoes, and we feel like, 'wow that's so hard,' but we've got to recognize there are people who face these issues every day and these disabilities every day," said Herder. "It brings



Michelle Perry

attention to (them) and gives a newfound respect."

The canes and blindfolds were provided by Industries for the Blind (IFB) of Winston-Salem, which also set up a display at the event. IFB is the nation's top employer of visually-impaired people. The organization's dedicated employees make everything

from mattresses to eyeglasses. IFB also offers classes and events to educate the public about the visually impaired, said IFB's Jenny Viars.

Junior Michelle Perry helped out at an information table for The Adaptables, Inc., which was manned by Executive Director James Whalen and Independent Living Program Director Keith Greenarch. Adaptables provides advocacy, information and services for those with disabilities. The agency offered a flier listing the proper terms to use when referring to people with disabilities.

"It makes you become aware of what you say and what you do," Perry said in reference to the proper names list.

Rehabilitation Club President Deiandra Wade said she thought the event was a success, drawing a larger crowd than she

expected. She said she followed her fellow students learned something from the event.

"The point is to make each individual aware of what goes on around them," said Wade. "They need to understand the things that (people with disabilities) have to go through to lead a normal life."

**Grace United Holiness Church**  
 140 Forest Drive  
 Kernersville, NC 27284  
 336-992-3190

**Services at Grace**

Sunday Morning Prayer...9:30 a.m.  
 Sunday School.....10:00 a.m.  
 Morning Worship.....11:15 a.m.  
 Tuesday Evening.....7:00 p.m.

Ricky B. Wilson

Visit Our Website [www.graceuhc.com](http://www.graceuhc.com)

**Geneva B. Brown**

**A Proven Educator for School Board District 1**

**Hospice**

**Trusted care at home when someone you love is facing serious illness.**

Hospice & Palliative CARE CENTER | 768-3972 | [HospiceCareCenter.org](http://HospiceCareCenter.org)

**Stepping Out with the "Friends"**

WSSU FRIENDS OF THE LIBRARY  
 25<sup>TH</sup> YEAR  
 GALA CELEBRATION

TICKET AND AD DEADLINE 10/10/10

Friday, November 5, 2010 6:30 - 10:30 PM  
 @ The Village Inn Golf & Conference Center  
 6205 Ramanda Drive, Clemmons, NC 27009

Individual tickets are \$50 and Ad rates are as low as \$10!  
 Donations are welcomed

Contact: [simonra@wssu.edu](mailto:simonra@wssu.edu) 336-750-1111  
 for additional information visit <http://fol.wssuonline.com>