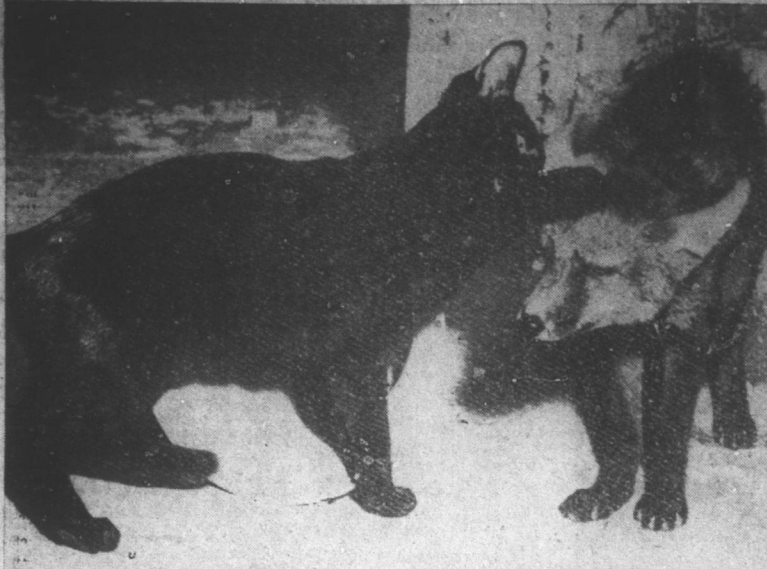


News Of The World In Pictures



"C'MERE, I WANT to tell you something," whispers kitty to friend Vicky the fox, both pets in the house of ceramist David Rawnsley in Paris. Rawnsley found Vicky trapped in barbed wire, had his wounds treated by a veterinarian and decided to tame and keep him as a pet.



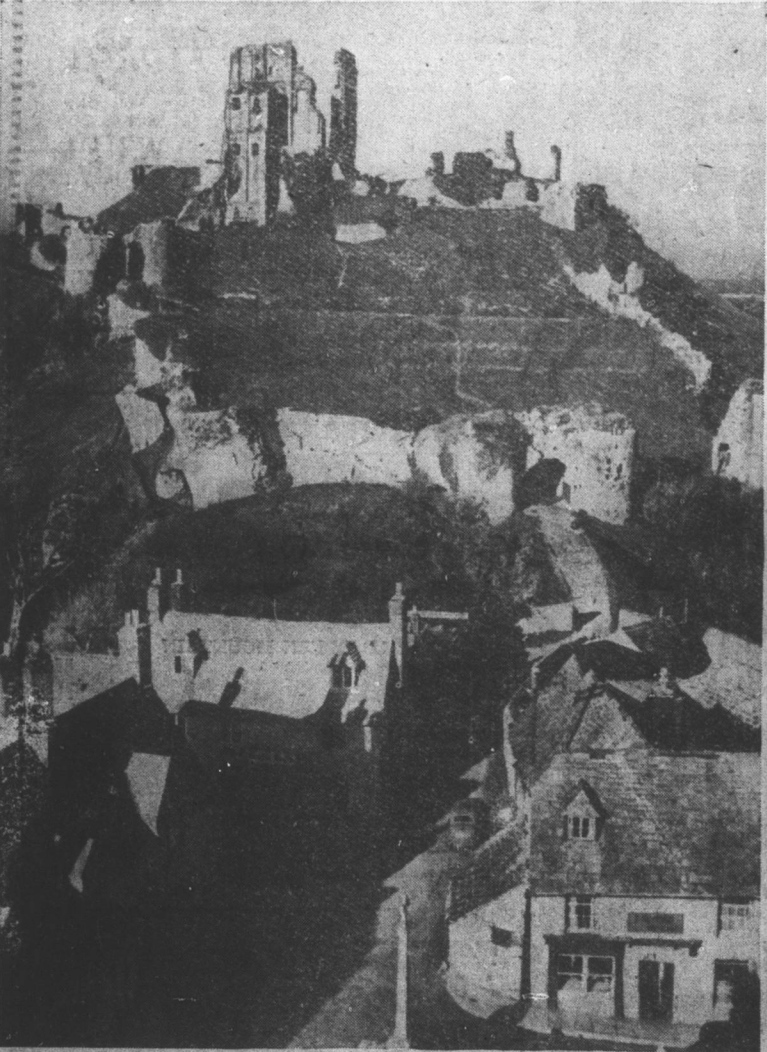
ITHA DUERRHAMMER is named "Steel Pier Diving Belle" at Atlantic City, N. J., winning over 1,500 other contestants.



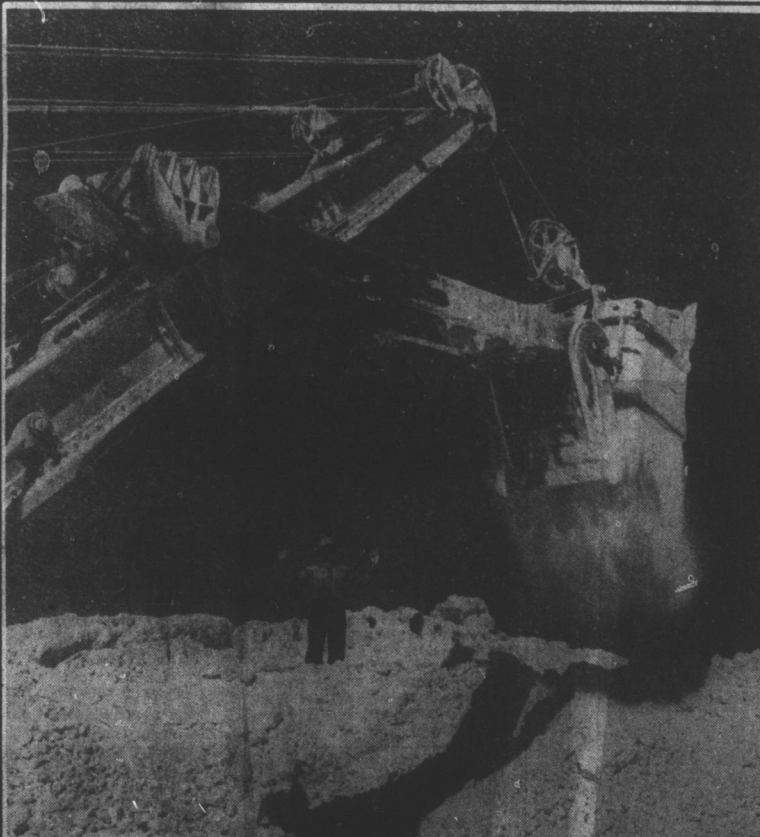
"DIAPER DERBY" is about to get underway at Palisades, N. J., amusement park, as tots from different parts of the country get set in the "starting stalls." "Derby champ" title is undefended each year, since the winner always outgrows the crawling classification.



LE SABRE, sensational experimental car designed by the GM styling section, will make its premier public showing in the United States at the Michigan State fair Aug. 31-Sept. 9. In development four years, Le Sabre is a laboratory on wheels for automobiles of the future.



ONCE A FAVORITE residence of Norman kings, Corfe castle now is a striking ruin in the Dorsetshire countryside, near Bournemouth, England, where it attracts thousands of sight-seers each year. After withstanding a six-week siege in 1643, it was blown up in 1646.



Power shovel at Grande Ecuille sulphur mine takes a two-ton gulp of mineral from block.

MINING MIGHTY MINERAL

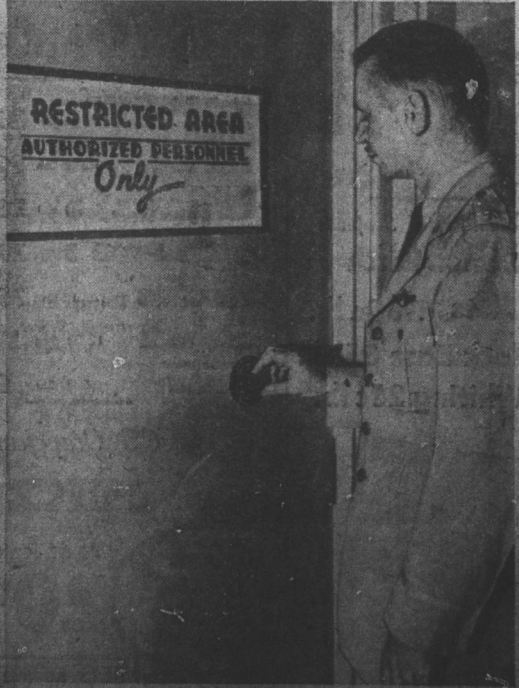
ALTHOUGH sulphur is being produced in this country at nearly two and one-half times the pre-war amount, the current shortage threatens to affect seriously the manufacture of all but defense-essential items. This condition is especially serious when it is remembered that sulphur is used in the production of nearly everything we eat, wear or use. Actually, there is more than ample sulphur for domestic needs. The shortage is caused by foreign preference for our low-priced sulphur, which sells for less than a penny a pound. In Europe, it costs up to \$120 a ton. Because sulphur is so essential to U. S. industry, producers such as the Freeport Sulphur company, Grand Ecuille, La., are spending millions to find and develop new sources in the southwest.



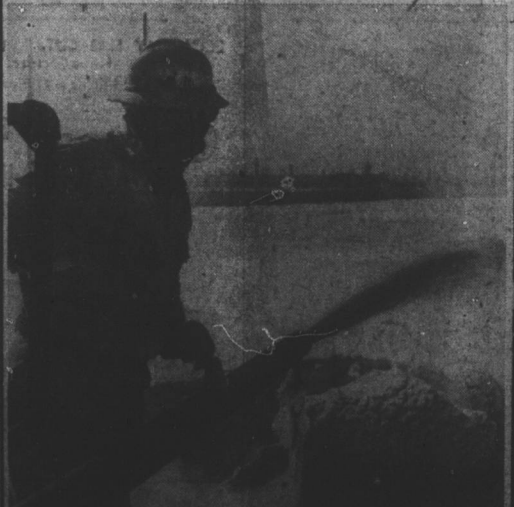
Bulldozer works on storage vat where molten sulphur can cool and harden like huge block of sulphur in background.



OWEN SHIRLEY wears solid color swimsuit, hose, shoes with high butterfly pocket and bra at Miami Beach.



COMBINATION LOCK on a steel door guards Air Force's command post somewhere in lower regions of the Pentagon in Washington. A battery of phones in the post provides a direct link with air warning network, air bases and Air Force HQ. Room gets first warning of approaching enemy planes.



Pumped from salt dome deposits hundreds of feet underground, molten sulphur pours into storage bin of the mine.



By ship and river barge, the sulphur is carried from Port Sulphur, 14-25 miles below New Orleans on the Mississippi—the shipping point for the sulphur company's mining area.